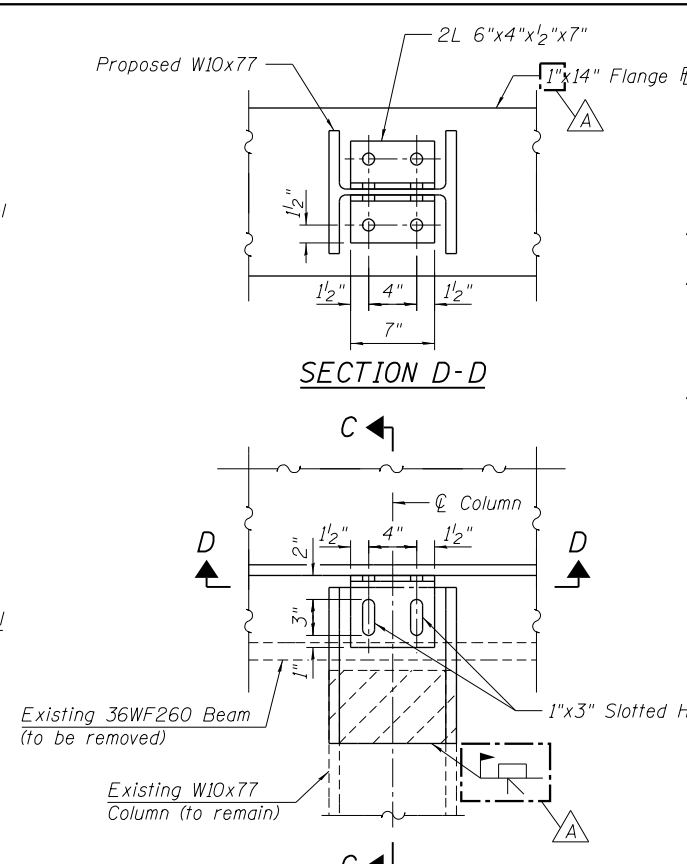


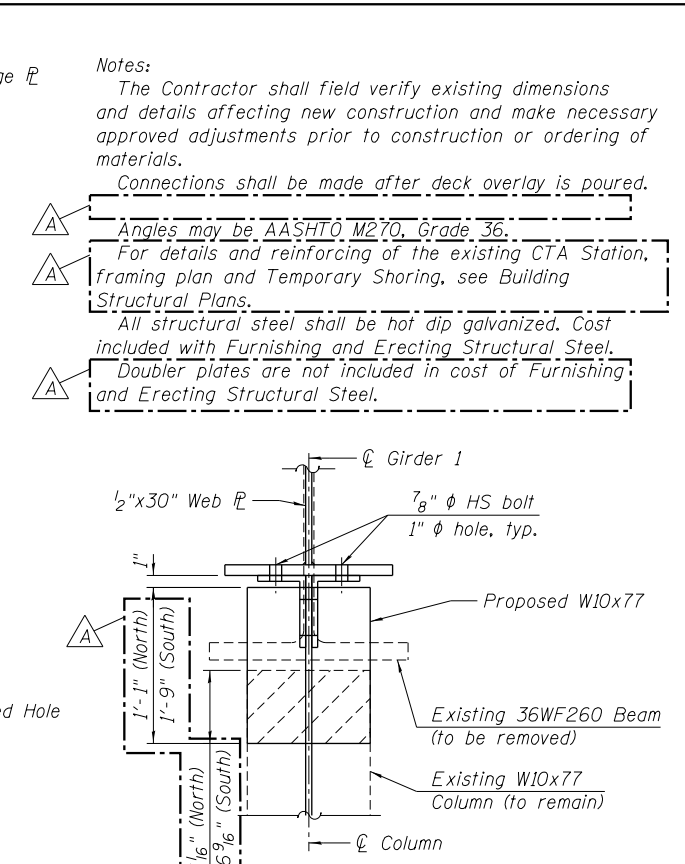
**CTA STATION CONNECTION**  
**ELEVATION**  
(Looking East)

Beam	Station	A
E1	3703+64.85	1 5/16"
E2	3703+70.59	2"
E3	3703+76.62	2 1/16"
E4	3703+84.44	3 9/16"
E5	3703+92.71	4 7/16"
E6	3704+01.22	5 5/16"

**SECTION A-A**

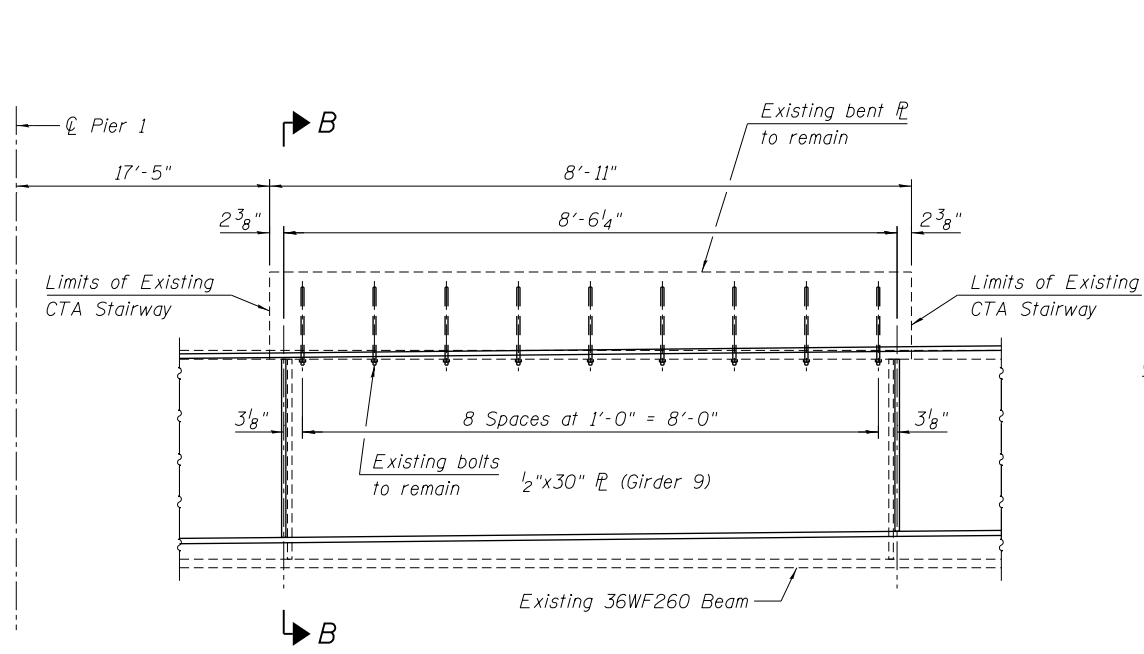


**EXISTING COLUMN CONNECTION**  
(Looking East)

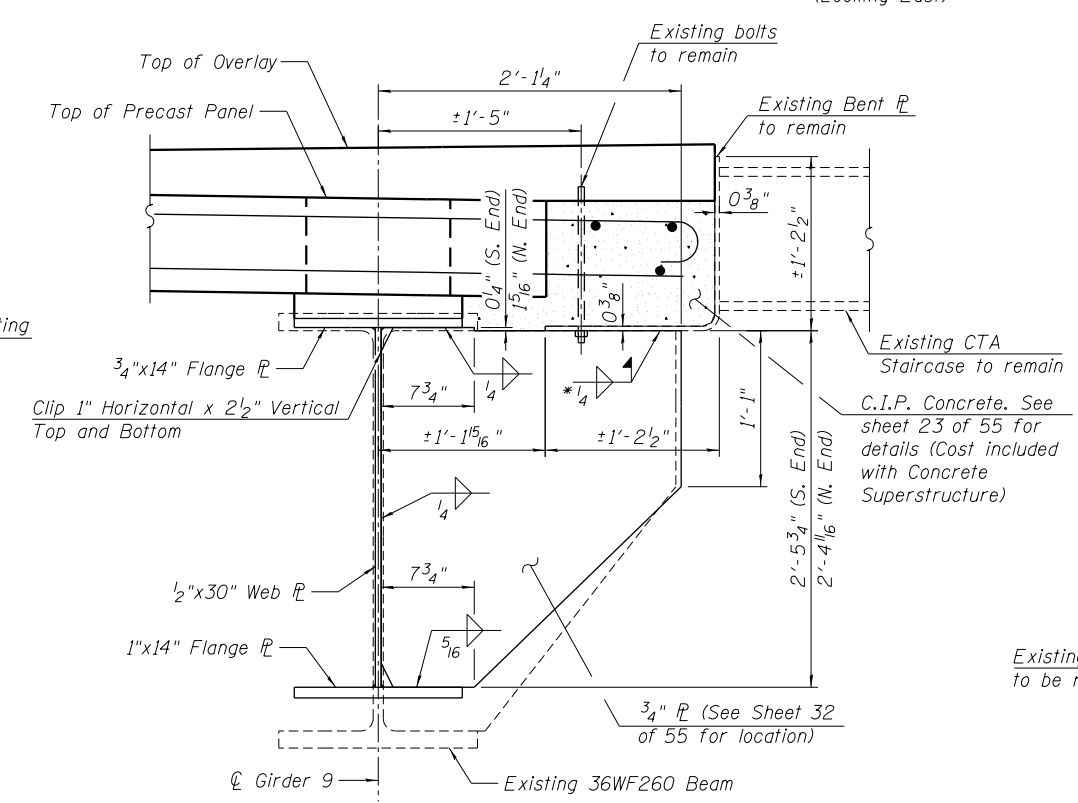


**DECK REMOVAL DETAIL**

Notes:  
The Contractor shall field verify existing dimensions and details affecting new construction and make necessary approved adjustments prior to construction or ordering of materials.  
Connections shall be made after deck overlay is poured.  
Angles may be AASHTO M270, Grade 36.  
For details and reinforcing of the existing CTA Station, framing plan and Temporary Shoring, see Building Structural Plans.  
All structural steel shall be hot dip galvanized. Cost included with Furnishing and Erecting Structural Steel.  
Doubler plates are not included in cost of Furnishing and Erecting Structural Steel.



**CTA STAIRWAY CONNECTION**  
**ELEVATION**  
(Looking West)



**SECTION B-B**

\*Cost included with Furnishing and Erecting Structural Steel.

12/13/20 PM 0161708-60W29-5035-SuperStruct\_SteelDet3.dgn



USER NAME = wjcollett1	DESIGNED WJC	REVISED A 1/20/2014 WJC/DL
CHECKED DL	REVISION	
PLOT SCALE = 0x2.0000 '1' / in.	DRAWN MTS	REVISION
PLOT DATE = 1/20/2014	CHECKED DL/KAH	REVISION

**STATE OF ILLINOIS**  
**DEPARTMENT OF TRANSPORTATION**

**STRUCTURAL STEEL DETAILS 3**  
**STRUCTURE NO. 016-1708**  
SHEET NO. 35 OF 55 SHEETS

MUN 2090	SECTION 2013-011R	COUNTY COOK	TOTAL SHEETS 356	SHEET NO. 167
CONTRACT NO. 60W29			ILLINOIS FED. AID PROJECT	