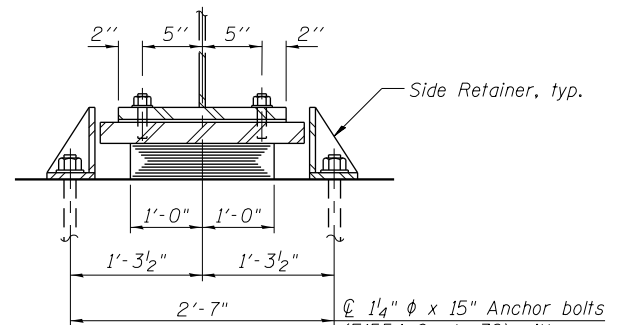
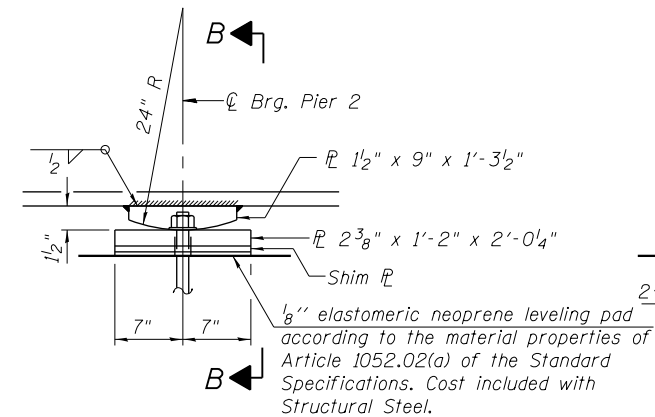


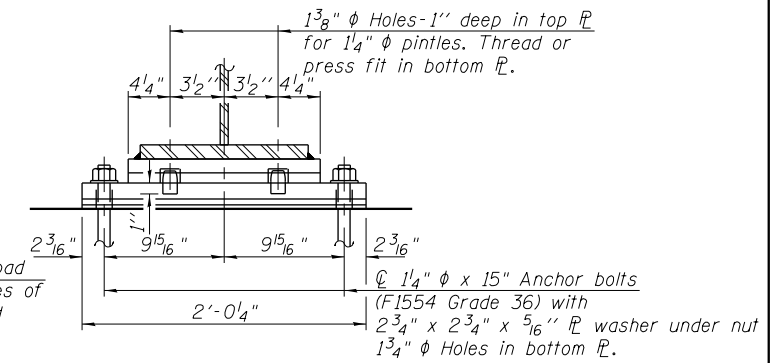
ELEVATION AT PIER
(Looking West)



SECTION A-A



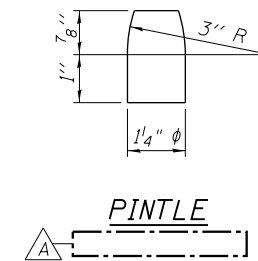
ELEVATION AT PIER
(Looking West)



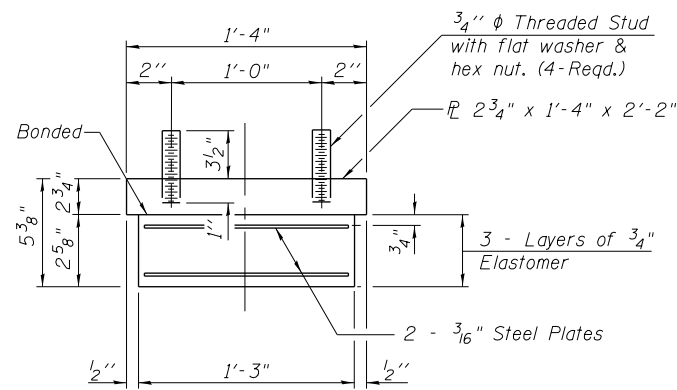
SECTION B-B

TYPE I ELASTOMERIC EXP. BRG.
(At Pier 1)

FIXED BEARING
(At Pier 2)

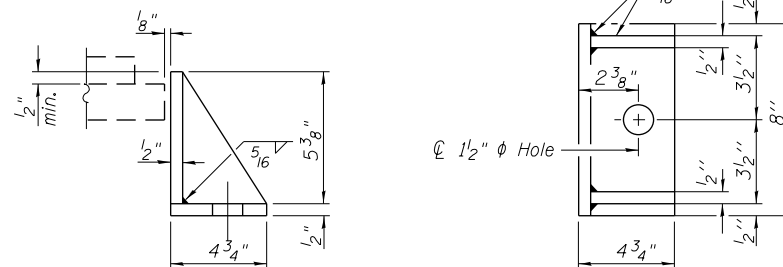


PINTLE



BEARING ASSEMBLY

Note:
Shim plates shall not be placed under Bearing Assembly.



SIDE RETAINER

Equivalent rolled angle with stiffeners will be allowed in lieu of welded plates.

Notes:
Anchor bolts shall be ASTM F1554 all-thread (or an Engineer-approved alternate material) of the grade(s) and diameter(s) specified. The corresponding specified grade of AASHTO M314 anchor bolts may be used in lieu of ASTM F1554.
Anchor bolts at fixed bearings may be either cast in place or installed in holes drilled after the supported member is in place.
Anchor bolts for side retainers may be cast in place or installed in holes drilled before or after members are in place.
Drilled and set anchor bolts shall be installed according to Article 521.06 of the Standard Specifications.
Side retainers and other steel members required for the elastomeric bearing assembly shall be included in the cost of Elastomeric Bearing Assembly, Type I.
Two 1/8" adjusting shims shall be provided for each bearing in addition to all other plates or shims and placed as shown on bearing details.
All (embedded and separate) bearing plates, side retainers, anchor bolts, nuts, washers and pintles shall be galvanized according to ASTM M111 or M232 as applicable.

BILL OF MATERIAL

Item	Unit	Total
Elastomeric Bearing Assembly, Type I	Each	9
Anchor Bolts, 1 1/4"	Each	36

10:32:32 AM 0161708-60W29-5037-Bearing_Details.dgn



USER NAME = BAWIort	DESIGNED JRM	REVISED 12/18/2013 JRM/WJC
PLOT SCALE = 0:2.0000 '1" / in.	CHECKED WJC	REVISED
PLOT DATE = 12/19/2013	DRAWN MTS	REVISED
	CHECKED WJC	REVISED

STATE OF ILLINOIS
DEPARTMENT OF TRANSPORTATION

PIER BEARING DETAILS
STRUCTURE NO. 016-1708

SHEET NO. 37 OF 55 SHEETS

MUN	SECTION	COUNTY	TOTAL SHEETS	SHEET NO.
2090	2013-011R	COOK	356	169
CONTRACT NO.			60W29	
ILLINOIS FED. AID PROJECT				