

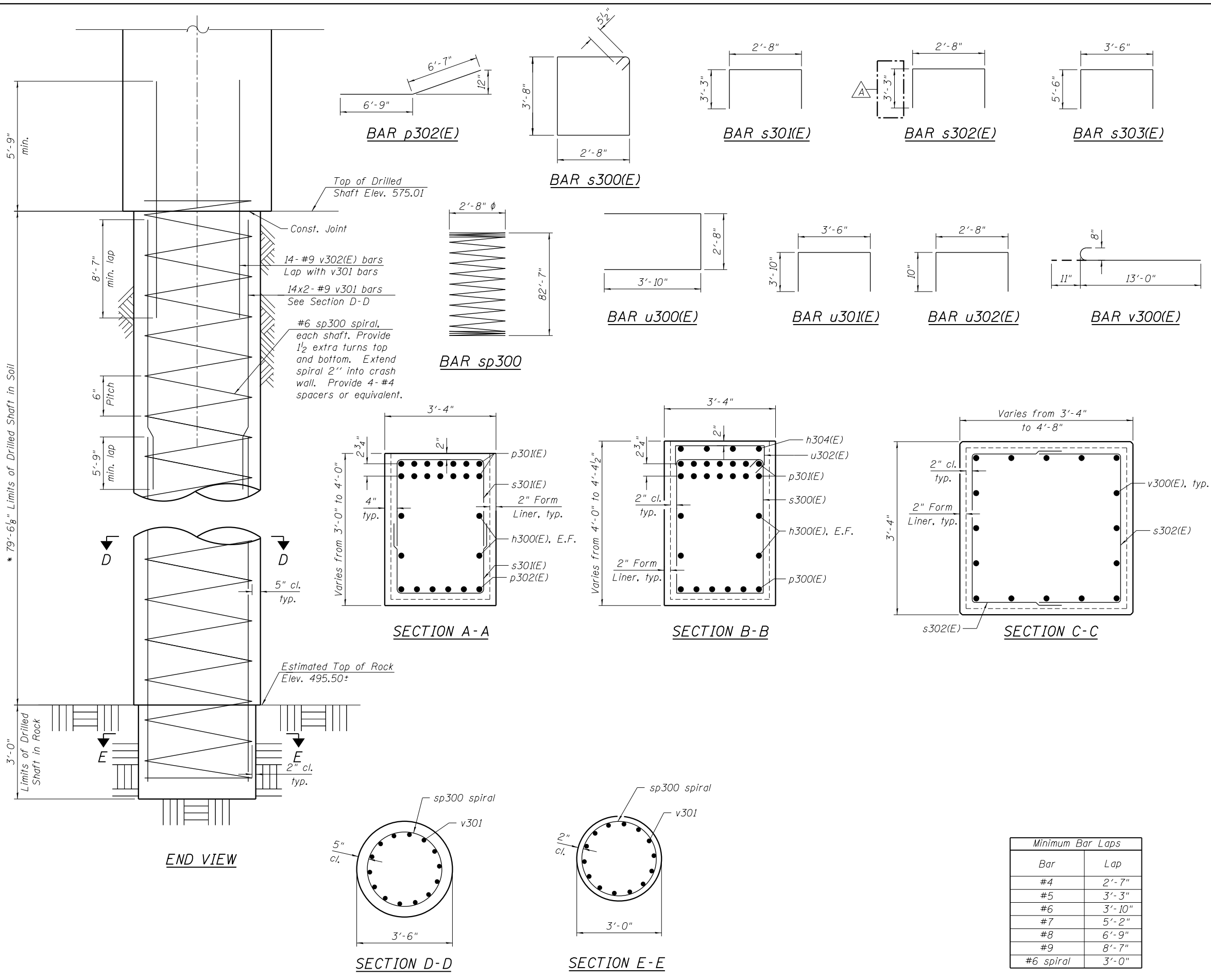
**BILL OF MATERIAL**

Bar	No.	Size	Length	Shape
h300(E)	4	#5	55'-2"	—
h301(E)	4	#6	53'-9"	—
h302(E)	14	#5	53'-9"	—
h303(E)	9	#9	53'-9"	—
h304(E)	4	#5	5'-11"	□
p300(E)	5	#8	42'-0"	—
p301(E)	12	#10	55'-8"	—
p302(E)	10	#8	13'-4"	—
s300(E)	85	#5	13'-7"	□
s301(E)	56	#5	9'-2"	□
s302(E)	72	#4	9'-2"	□
s303(E)	218	#6	14'-6"	□
sp300	6	#6	82'-7"	—
u300(E)	8	#6	10'-4"	□
u301(E)	18	#6	11'-2"	□
u302(E)	7	#5	4'-4"	□
v300(E)	64	#8	13'-11"	□
v301	168	#9	44'-1"	—
v302(E)	84	#9	14'-6"	—
Structure Excavation		Cu. Yd.	36	
Concrete Structures		Cu. Yd.	101.4	
Reinforcement Bars		Pound	37,680	
Reinforcement Bars, Epoxy Coated		Pound	20,710	
Drilled Shaft in Soil		Cu. Yd.	170.1	
Drilled Shaft in Rock		Cu. Yd.	4.8	
Concrete Sealer		Sq. Ft.	2008	

Bars indicated thus 1x15 etc., indicates 1 line of bars with 15 lengths per line.

**Notes:**  
 Apply concrete sealer to all exposed concrete surfaces of the pier.  
 \* The quantities and reinforcement detailing are based on the top of shaft and the estimated top of rock elevations shown and may change based on the actual top of rock encountered at each shaft and the final top of shaft elevation.  
 \*\* Length is height of spiral.

Bar	Lap
#4	2'-7"
#5	3'-3"
#6	3'-10"
#7	5'-2"
#8	6'-9"
#9	8'-7"
#6 spiral	3'-0"



10:32:50 AM 0161708-60W29-5048-Pier2\_Details.dgn



USER NAME = BAWIort	DESIGNED JRM	REVISED 12/18/2013 JRM/KAH
PLOT SCALE = 0x2.0000 'x' / in.	CHECKED KAH	REVISED
PLOT DATE = 12/19/2013	DRAWN RLS	REVISED
	CHECKED KAH	REVISED

**STATE OF ILLINOIS  
DEPARTMENT OF TRANSPORTATION**

**PIER 2 DETAILS  
STRUCTURE NO. 016-1708**  
SHEET NO. 48 OF 55 SHEETS

MUN 2090	SECTION 2013-011R	COUNTY COOK	TOTAL SHEETS 356	SHEET NO. 180
CONTRACT NO. 60W29			ILLINOIS FED. AID PROJECT	