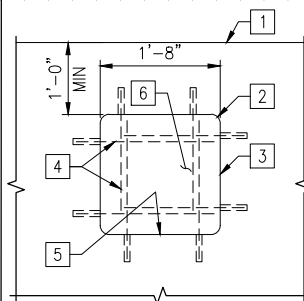


**SHEET NOTES:**

- ALL EXISTING DIMENSIONS AND ELEVATIONS ARE SHOWN FOR REFERENCE ONLY AND SHALL BE VERIFIED PRIOR TO COMMENCEMENT OF CONSTRUCTION AND/OR FABRICATION OF ANY MEMBERS TO DETERMINE ANY CRITICAL DIMENSIONS THAT MAY BE DEPENDANT ON THE EXISTING STRUCTURE.
- PROVIDE STEEL CONSTRUCTION IN ACCORDANCE WITH SPEC SECTION 05 10 30 AND IDCM, 2013 EXCEPT GALVANIZING IS NOT REQUIRED FOR TEMPORARY CONSTRUCTION.
- W21x68 SHORING BEAMS, TWO REQUIRED.
- SEE BRIDGE DRAWINGS FOR CLEARANCE THAT SHALL BE MAINTAINED THROUGHOUT CONSTRUCTION.
- EXISTING CONCRETE DECK BEYOND.
- EXISTING STATION FRAMING BEYOND TO REMAIN.
- W8x48 SHORING COLUMN, (4) REQUIRED AT EACH TOWER.
- W12x53 SHORING BEAM, (4) REQUIRED AT EACH TOWER.
- NOT USED.
- 13'x18' x 30" MAT FOUNDATION WITH #7 AT 11" O.C. EACH WAY, TOP AND BOTTOM.  
T/ EXISTING CONCRETE SLAB  
EL= ±19.00' (VIF)
- W12x68 SHORING BEAM, TWO REQUIRED. LINE UP DIRECTLY UNDER SHORING TOWER SUPPORT COLUMNS.
- PROVIDE (4) MICROPILES WITH 32KIP ASD LOAD CAPACITY PER PILE. SEE C2/S-008.
- MAXIMUM REACTION AT EACH SHORED BEAM. REACTIONS ARE BASED ON FACTORED, LRFD DESIGN LOADS.
- TYPICAL L4x4 TEMPORARY X-BRACING AT EAST END OF EXISTING STATION FLOOR FRAMING. BRACING SHALL BE INSTALLED PRIOR TO DISCONNECTING BEAMS FROM EXISTING BRIDGE GIRDER.
- W18x35 DIAPHRAGM BEAM UNDER EXISTING STATION FRAMING BEAM, (6) LOCATIONS.
- EXISTING 24WF STATION FRAMING BEAM, (6) LOCATIONS.
- MAINTAIN MINIMAL PLATFORM CLEARANCE DURING CONSTRUCTION.
- EXISTING STAIRS TO REMAIN.
- EXISTING UTILITY COLUMN. CONTRACTOR SHALL REMOVE, STORE AND REINSTALL COLUMN AFTER NEW BRIDGE HAS BEEN CONSTRUCTED. SEE SHEET 167 OF THE BRIDGE DRAWINGS FOR THE CONNECTION DETAIL.

**KEYED NOTES:**

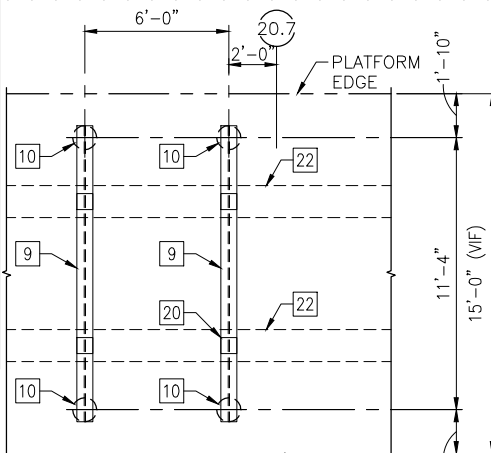
- EDGE OF EXISTING CONCRETE PLATFORM.
- PROVIDE MINIMUM 3"Ø CORE AT EACH CORNER.
- PROVIDE SAW CUT TO OUTSIDE EDGE OF EACH CORED HOLE. ROUGHEN EXISTING CONCRETE TO ¼" AMPLITUDE.
- PROVIDE #5 GALV DOWELS AT 12" OC, MAX SPACING, EACH WAY. TOTAL DOWEL LENGTH SHALL BE TOTAL LENGTH OF OPENING. EMBED DOWELS 4" INTO EXISTING CONCRETE WITH AN APPROVED CHEMICAL ADHESIVE.
- APPLY CONCRETE BONDING AGENT PRIOR TO PLACING CONCRETE PATCH IN ACCORDANCE WITH THE MANUFACTURER'S CRITERIA.



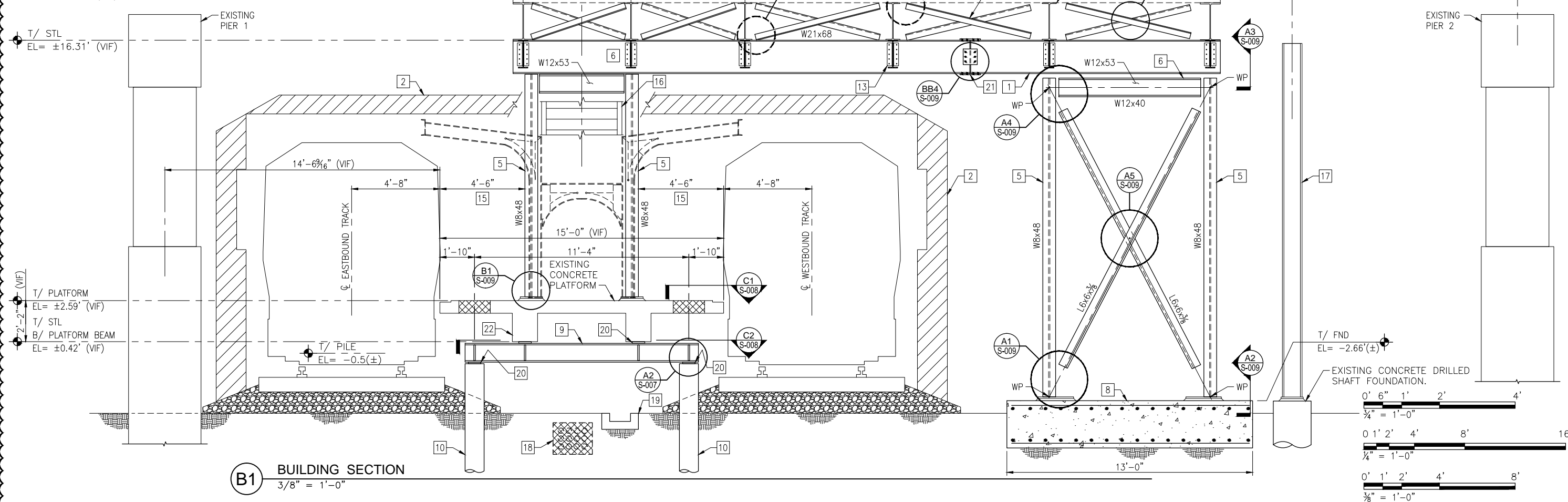
**C1 CONCRETE REPAIR DETAIL**  
3/4" = 1'-0"

**KEYED NOTES:**

- EDGE OF EXISTING CONCRETE PLATFORM.
- PROVIDE MINIMUM 3"Ø CORE AT EACH CORNER.
- PROVIDE SAW CUT TO OUTSIDE EDGE OF EACH CORED HOLE. ROUGHEN EXISTING CONCRETE TO ¼" AMPLITUDE.
- PROVIDE #5 GALV DOWELS AT 12" OC, MAX SPACING, EACH WAY. TOTAL DOWEL LENGTH SHALL BE TOTAL LENGTH OF OPENING. EMBED DOWELS 4" INTO EXISTING CONCRETE WITH AN APPROVED CHEMICAL ADHESIVE.
- APPLY CONCRETE BONDING AGENT PRIOR TO PLACING CONCRETE PATCH IN ACCORDANCE WITH THE MANUFACTURER'S CRITERIA.
- APPLY NON-SHRINKING CONCRETE PATCH FLUSH WITH EXISTING ADJOINING CONCRETE SURFACE. MATCH FINISH OF EXISTING CONCRETE.



**C2 PARTIAL PLAN**  
1/4" = 1'-0"



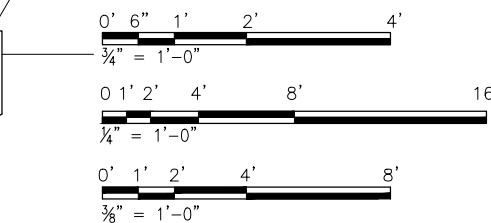
**B1 BUILDING SECTION**  
3/8" = 1'-0"

T/ PLATFORM  
EL= ±2.59' (VIF)  
T/ STL  
B/ PLATFORM BEAM  
EL= ±0.42' (VIF)

EXISTING PIER 1  
T/ STL  
EL= ±16.31' (VIF)

T/ PILE  
EL= -0.5(±)

T/ FND  
EL= -2.66'(±)  
EXISTING CONCRETE DRILLED SHAFT FOUNDATION.



USER NAME = MAC	DESIGNED KLT	REVISED A 1/20/2014
CHECKED AB	REVISD ---	
DRAWN MAC	REVISD ---	
CHECKED KLT	REVISD ---	
PLOT DATE = 10/28/13		

STATE OF ILLINOIS  
DEPARTMENT OF TRANSPORTATION

PEORIA STREET STATION  
STATION SHORING BUILDING SECTION

SHEET NO. S-008 OF 117 SHEETS

MUN 2090	SECTION 2013-011R	COUNTY COOK	TOTAL SHEETS 356	SHEET NO. 199
				CONTRACT NO. 60W29
ILLINOIS FED. AID PROJECT FED. AID PROJECT				