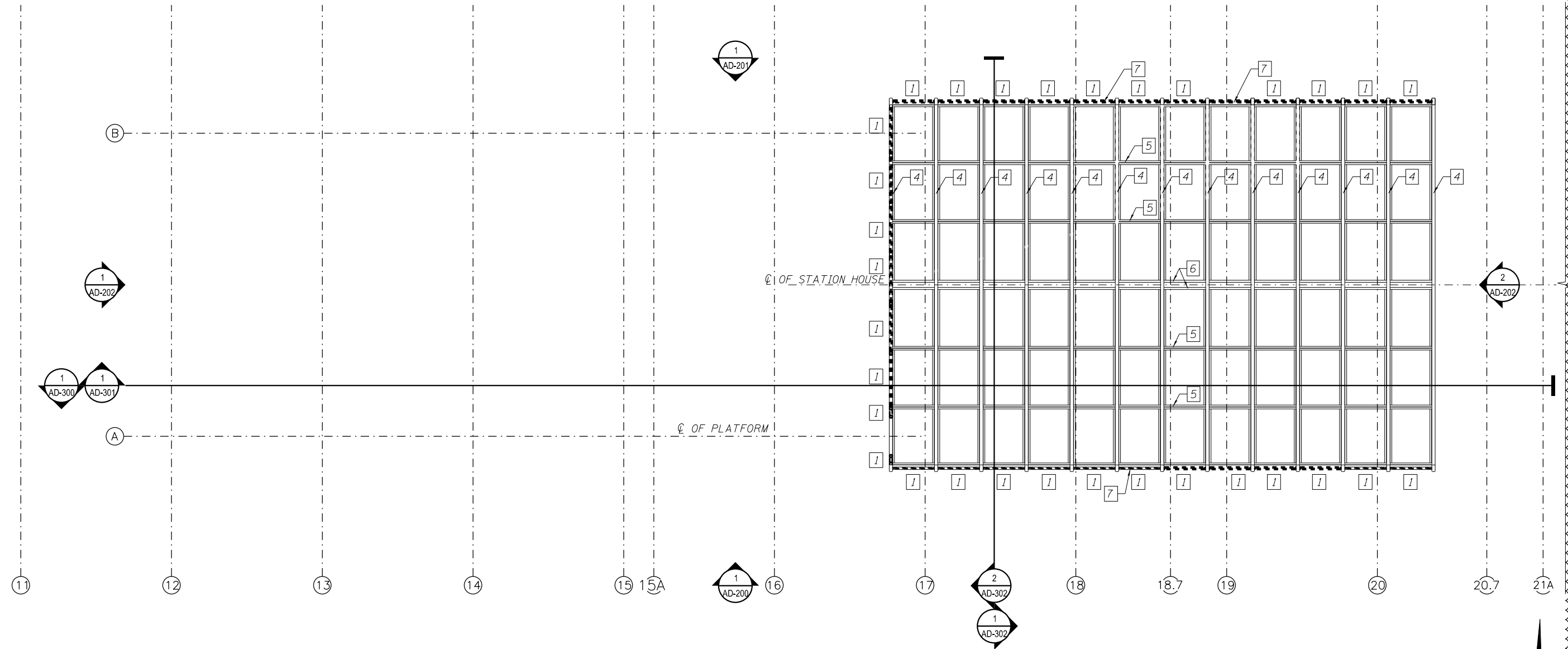


- KEY NOTES:
1. REMOVE GLAZING, GLAZING STOPS & SCREWS.
 2. NOT USED.
 3. NOT USED.
 4. EXISTING STEEL TUBE STRUCTURE TO REMAIN.
 5. EXISTING STEEL TEE TO REMAIN.
 6. EXISTING STEEL CHANNELS TO REMAIN.
 7. EXISTING STEEL BENT PLATE TO REMAIN.



1 DEMOLITION STATION REFLECTED CEILING PLAN
SCALE: 3/16" = 1'-0"



8:49:08 AM 01/17/08-60W29-AD-121.dgn



USER NAME = whbruce	DESIGNED - WHB	REVISED Δ 12/18/2013
	CHECKED - CRR	REVISED —
PLOT SCALE = 10:8.0012 '4" / 1in.	DRAWN - WHB	REVISED —
PLOT DATE = 12/18/2013	CHECKED - CRR	REVISED —

STATE OF ILLINOIS
DEPARTMENT OF TRANSPORTATION

PEORIA STREET STATION
DEMOLITION STATION REFLECTED CEILING PLAN

SHEET NO. AD-121 OF 117 SHEETS

MUN	SECTION	COUNTY	TOTAL SHEETS	SHEET NO.
2090	2013-011R	COOK	356	218
CONTRACT NO. 60W29				
ILLINOIS FED. AID PROJECT		FED. AID PROJECT		