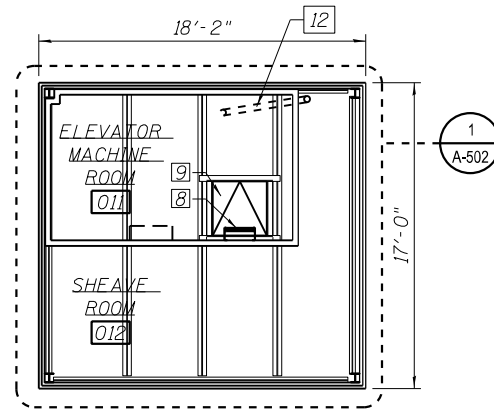
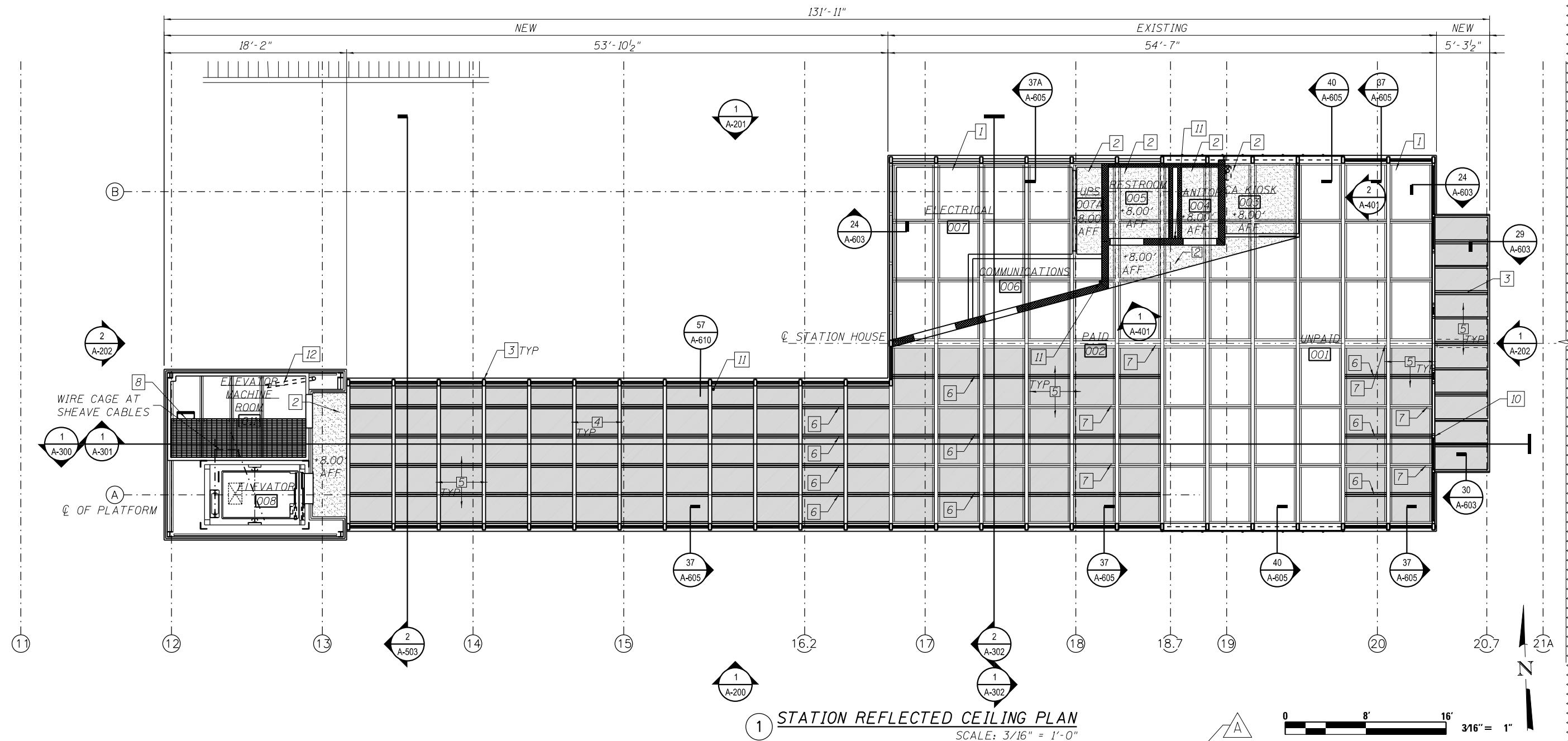


GENERAL NOTES:
 A. SEE E-121 FOR STATION HOUSE LIGHTING PLAN

- KEY NOTES:
1. PRE-FINISHED LINEAR METAL CEILING.
 2. DENS-GLASS BOARD CEILING/SOFFIT PAINTED.
 3. NEW STRUCTURAL TUBE FRAME, SEE STRUCTURAL PLANS.
 4. NEW STRUCTURAL FRAMING, SEE STRUCTURAL PLANS.
 5. EXPOSED TRANSLUCENT ROOF PANELS.
 6. NEW WT4 INTERMEDIATE SUPPORT, SEE STRUCTURAL PLANS.
 7. EXIST WT4 PREP & PAINT.
 8. GALVANIZED STEEL LADDER.
 9. ROOF ACCESS HATCH.
 10. NEW STOREFRONT TUBE STEEL FRAMING, SEE STRUCTURAL PLANS.
 11. PLUMBING VENT - SEE PLUMBING DWGS.
 12. ROOF DRAIN DOWNSPOUT



2 MEZZANINE REFLECTED CEILING PLAN
 SCALE: 3/16" = 1'-0"



1 STATION REFLECTED CEILING PLAN
 SCALE: 3/16" = 1'-0"

4:35:50 PM 01/21/2014 60W29-A-121.dgn



USER NAME = whbruce	DESIGNED - WHB	REVISED - 1/20/2014
	CHECKED - CRR	REVISED -
PLOT SCALE = 128:0.0015 in:in / in.	DRAWN - WHB	REVISED -
PLOT DATE = 1/20/2014	CHECKED - CRR	REVISED -

STATE OF ILLINOIS
 DEPARTMENT OF TRANSPORTATION

PEORIA STREET STATION
 STATION REFLECTED CEILING PLAN

SHEET NO. A-121 OF 117 SHEETS

MUN	SECTION	COUNTY	TOTAL SHEETS	SHEET NO.
2090	2013-011R	COOK	356	232
CONTRACT NO. 60W29			ILLINOIS FED. AID PROJECT FED. AID PROJECT	