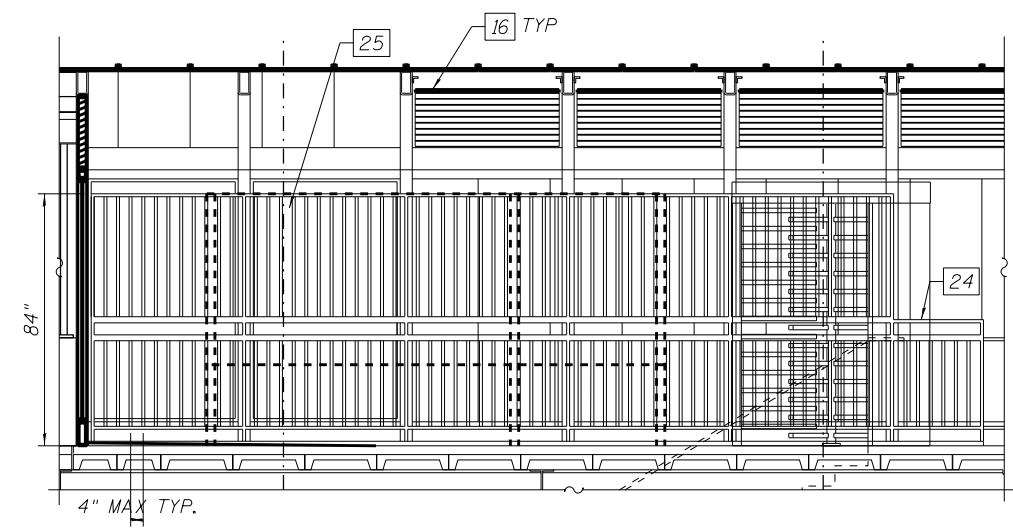
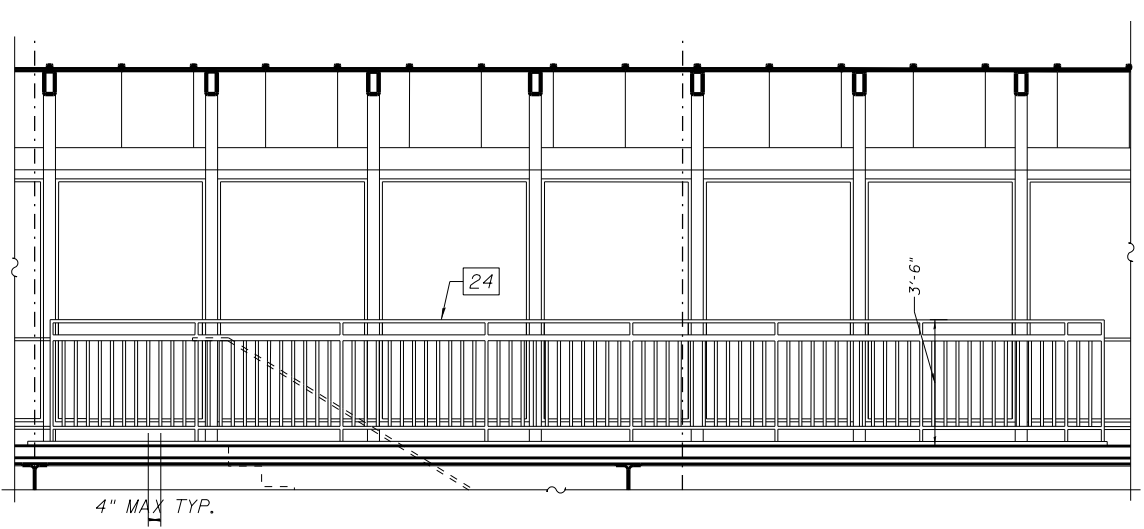


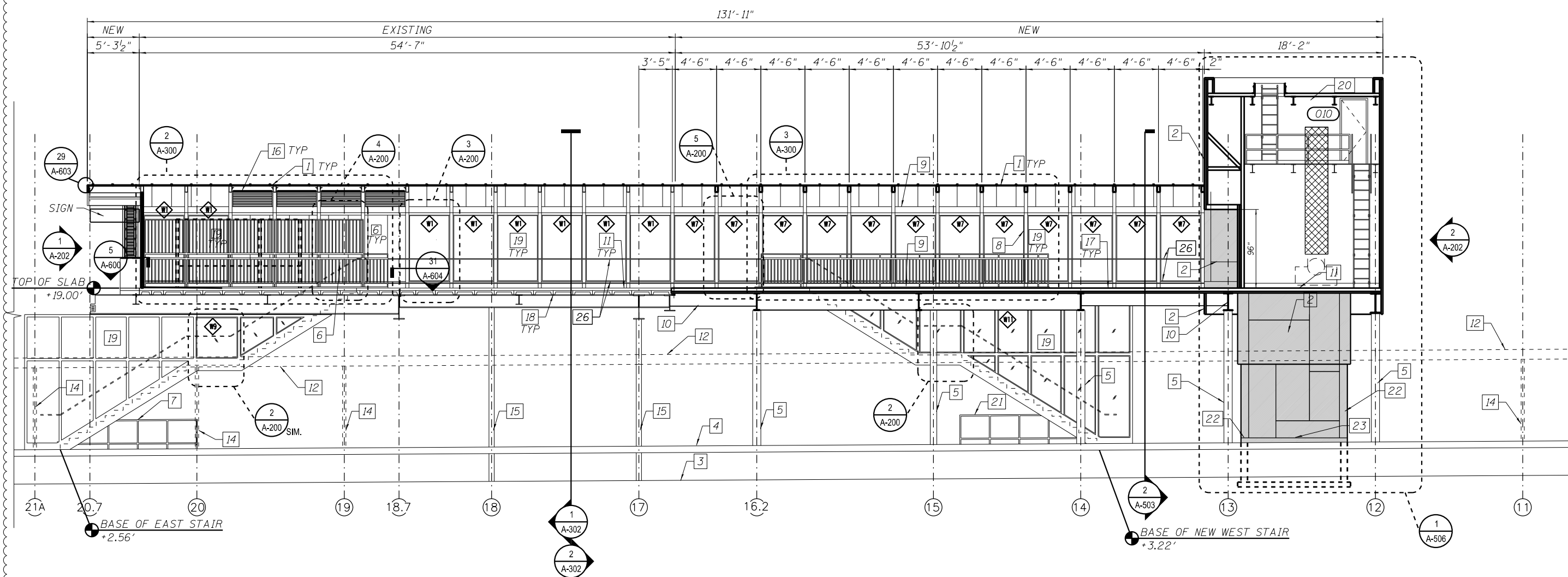
- KEY NOTES:
1. TRANSLUCENT ROOF PANEL SYSTEM.
 2. INSULATED SS WALL PANEL SYSTEM.
 3. FINISH GRADE.
 4. PLATFORM.
 5. NEW COLUMN PREP AND PAINT - SEE STRUCTURAL DWGS.
 6. TRANSLUCENT WALL PANEL SYSTEM TO MATCH ROOF COLOR.
 7. EXIST CANE RAIL, PREP AND PAINT.
 8. NEW STEEL TUBE STRUCTURAL, SEE STRUCTURAL DRAWINGS.
 9. NEW STRUCTURAL FRAMING, SEE STRUCTURAL DRAWINGS.
 10. STRUCTURAL BEAM.
 11. FINISH FLOOR LEVEL.
 12. PLATFORM CANOPY AND CANOPY COLUMNS DASHED FOR CLARITY.
 13. NOT USED.
 14. EXIST CANOPY COLUMN, PREP AND PAINT.
 15. EXIST STATION COLUMN, PREP AND PAINT.
 16. LINEAR METAL CEILING SYSTEM.
 17. NEW CONC SLAB.
 18. EXIST PRECAST PLANK.
 19. 1/2" LAMINATED GLASS.
 20. SBS ROOF SYSTEM.
 21. NEW CANE RAIL.
 22. STAINLESS STEEL CLAD COLUMNS.
 23. STAINLESS STEEL THIN PANELS.
 24. STAIR GUARDRAILS STAINLESS STEEL.
 25. SECURITY GUARDRAIL STAINLESS STEEL.
 26. WINDOW GUARDRAIL STAINLESS STEEL.



2 STATION SECTION LOOKING SOUTH
SCALE: 3/8" = 1'-0"



3 STATION SECTION LOOKING SOUTH
SCALE: 3/8" = 1'-0"



1 STATION SECTION LOOKING SOUTH
SCALE: 3/16" = 1'-0"
*STAIR RAILINGS NOT SHOWN FOR CLARITY

4:31:50 PM 01/17/08-60W29-A-300.dgn



USER NAME = whbruce	DESIGNED - WHB	REVISED - 1/20/2014
	CHECKED - CRR	REVISED -
PLOT SCALE = 128:0.0015 in/in	DRAWN - WHB	REVISED -
PLOT DATE = 1/20/2014	CHECKED - CRR	REVISED -

STATE OF ILLINOIS
DEPARTMENT OF TRANSPORTATION

PEORIA STREET STATION
STATION SECTION

SHEET NO. A-300 OF 117 SHEETS

MUN	SECTION	COUNTY	TOTAL SHEETS	SHEET NO.
2090	2013-011R	COOK	356	237
CONTRACT NO. 60W29			ILLINOIS FED. AID PROJECT FED. AID PROJECT	