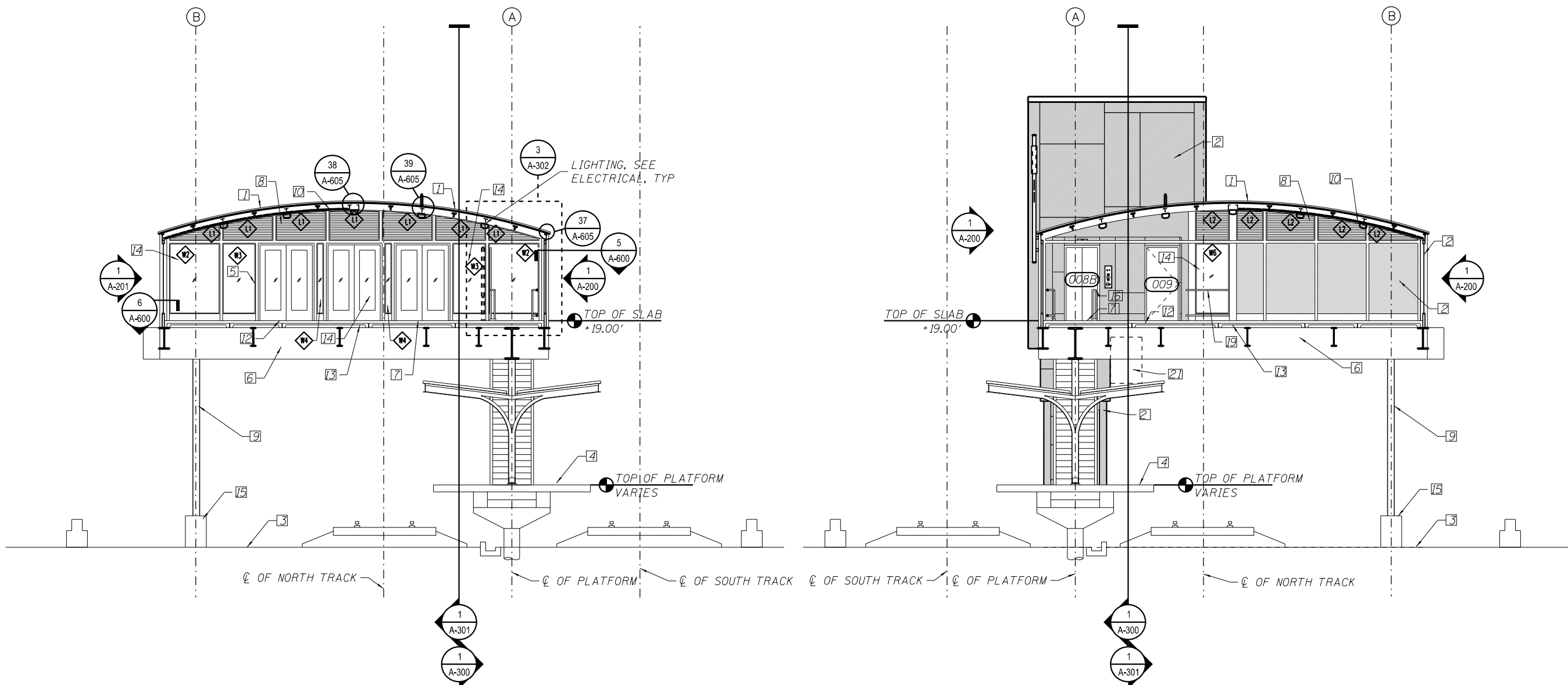


3 STATION SECTION LOOKING EAST
SCALE: 3/16" = 1'-0"

- KEY NOTES:
1. TRANSLUCENT ROOF PANEL SYSTEM.
 2. INSULATED SS WALL PANEL SYSTEM.
 3. FINISH GRADE.
 4. PLATFORM.
 5. NEW STEEL TUBE STRUCTURE -SEE STR DWGS.
 6. STRUCTURAL BEAM.
 7. FINISH FLOOR LEVEL.
 8. LOUVER.
 9. EXIST STATION COLUMN TO REMAIN.
 10. LINEAR METAL CEILING SYSTEM.
 11. NOT USED.
 12. NEW CONC TOPPING SLAB.
 13. EXIST PRECAST PLANK.
 14. 1/2" LAMINATED GLASS.
 15. 3' HIGH CONCRETE PEDESTAL.
 16. STAIR GUARDRAIL.
 17. SECURITY GUARDRAIL.
 18. STAIR HANDRAIL.
 19. WINDOW GUARDRAIL.
 20. MAPS/INFO BOARDS.
 21. A/C CONDENSER LOCATED ABOVE CANOPY BETWEEN GRIDS 16-17



1 STATION SECTION LOOKING EAST
SCALE: 3/16" = 1'-0"

2 STATION SECTION LOOKING WEST
SCALE: 3/16" = 1'-0"



4:31:56 PM 01/17/08-60W29-A-302.dgn



USER NAME = whbruce	DESIGNED - WHB	REVISED - 1/20/2014
	CHECKED - CRR	REVISED -
PLOT SCALE = 10:8.0012 ' / in.	DRAWN - WHB	REVISED -
PLOT DATE = 1/20/2014	CHECKED - CRR	REVISED -

STATE OF ILLINOIS
DEPARTMENT OF TRANSPORTATION

PEORIA STREET STATION
STATION SECTION

SHEET NO. A-302 OF 117 SHEETS

MUN	SECTION	COUNTY	TOTAL SHEETS	SHEET NO.
2090	2013-011R	COOK	356	239
CONTRACT NO. 60W29				
ILLINOIS FED. AID PROJECT FED. AID PROJECT				