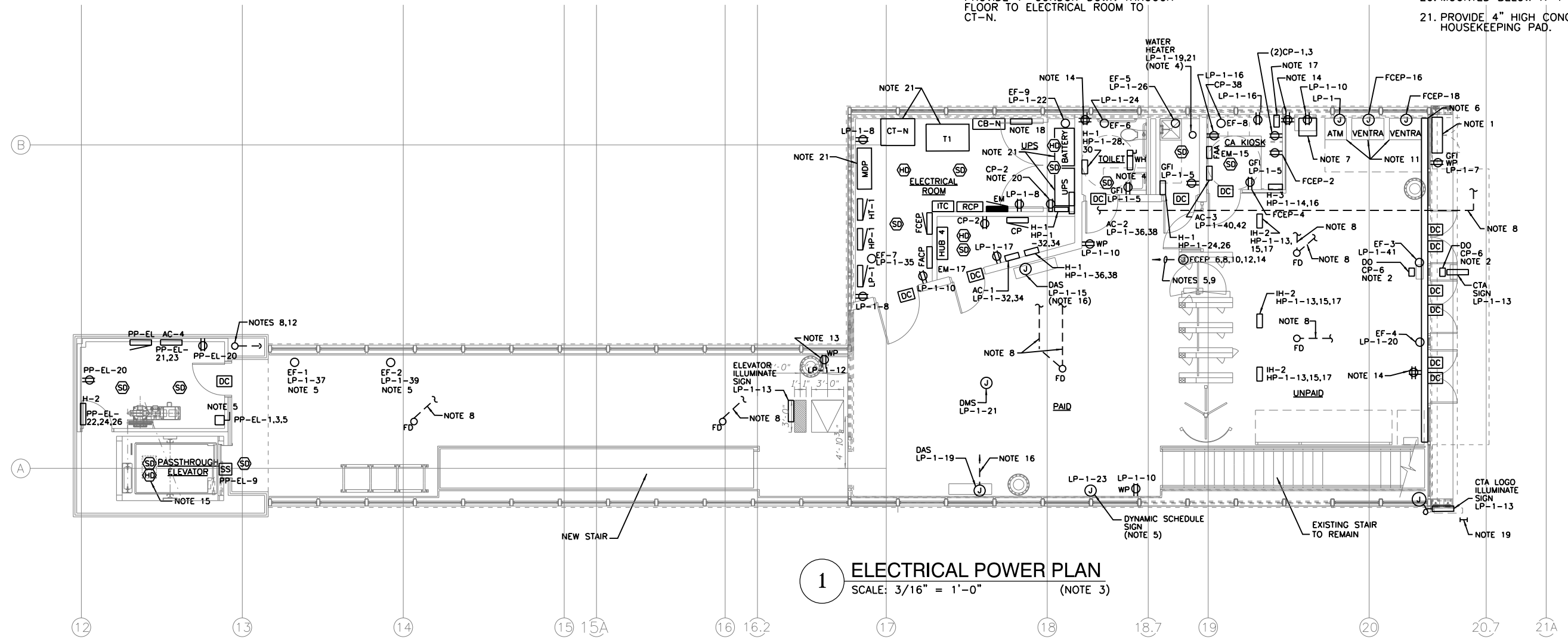


**NOTES:**

1. GENERATOR TAP BOX, SEE SHEET 290 FOR DETAILS.
2. ADA DOOR OPERATOR.
3. REFER TO ARCHITECTURAL DEMOLITION DRAWINGS FOR STATION DEMOLITION REQUIREMENTS.
4. FURNISH AND INSTALL 60A, 2P, 250V NONFUSED DISCONNECT ROUTED TO PANEL HP-1 CIRCUITS 19,21 WITH 2#10AWG AND 1#10AWG, 3/4" C GRS.
5. ROUTE RACEWAY UNDER STATION FLOOR.
6. CONTINUOUS 2"x4" DIVIDED WIREWAY MOUNTED ON EXISTING STRUCTURAL TUBING ABOVE DOOR PAINTED TO MATCH EXISTING STRUCTURE.
7. COMED METER IN LOCKABLE CABINET, PROVIDE 1" CONDUIT DOWN THROUGH FLOOR TO ELECTRICAL ROOM TO CT-N.
8. PROVIDE HEAT TRACE POWER AND CONTROLS FOR ALL PLUMBING PIPING (ELEV. ROOF DRAIN, WATER, SANITARY, AND VENT). REFER TO SHEET 265 FOR EXACT LOCATIONS ROUTING OF PIPING, MAXIMUM LENGTH OF HEAT TRACE PER CIRCUIT TO BE 200 LF. SEE SHEET 277 FOR CIRCUITING.
9. PROVIDE SEPERATE DEDICATED NEUTRAL WIRE FOR EACH CIRCUIT. REFER TO SHEET 303 FOR ADDITIONAL WIRING REQUIREMENTS.
10. ALL CONDUITS TO BE ROUTED BELOW FLOOR SLAB. PROVIDE UNISTRUT, THREADED ROD AND BEAM CLAMPS.
11. PROVIDE 1" CONDUIT FROM EACH VENTRA AND ATM TO COMM ROOM.
12. ROOF DRAIN PIPING.
13. PEDESTAL MOUNTED
14. REMOVE EXISTING RECEPTACLE AND CONDUIT/WIRING.
15. MOUNTED AT TOP OF ELEVATOR SHAFT.
16. POWER FOR DAS Routed BELOW FLOOR SLAB.
17. REFER TO SHEET 274 FOR REMOTE KIOSK PANEL DETAIL.
18. MOTORIZED DAMPER INTERLOCKED WITH EF-7.
19. EXISTING SS SHROUD TO HIDE EXISTING CONDUIT ROUTED FROM STATION TO PLATFORM. CONTRACTOR TO USE EXISTING COLUMN LOCATION FOR NEW CONDUITS. CONTRACTOR TO PROVIDE SS SHROUD TO CONCEAL CONDUITS.
20. MOUNTED BELOW H-1
21. PROVIDE 4" HIGH CONCRETE HOUSEKEEPING PAD.



**1 ELECTRICAL POWER PLAN**  
SCALE: 3/16" = 1'-0" (NOTE 3)

USER NAME = hab1b	DESIGNED JCM	REVISED $\Delta$ 1/20/2014
PLLOT SCALE = 10:8 " / in.	CHECKED OS	REVISED
PLLOT DATE = 1/21/2014	DRAWN HR	REVISED
	CHECKED BC	REVISED

MUN 2090	SECTION 2013-011R	COUNTY COOK	TOTAL SHEETS 356	SHEET NO. 272
CONTRACT NO. 60W29			ILLINOIS FED. AID PROJECT	