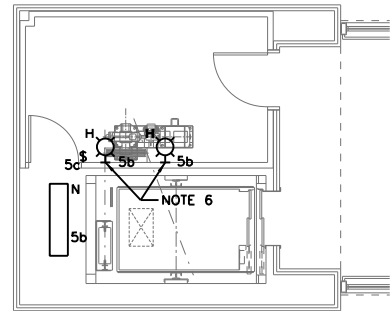
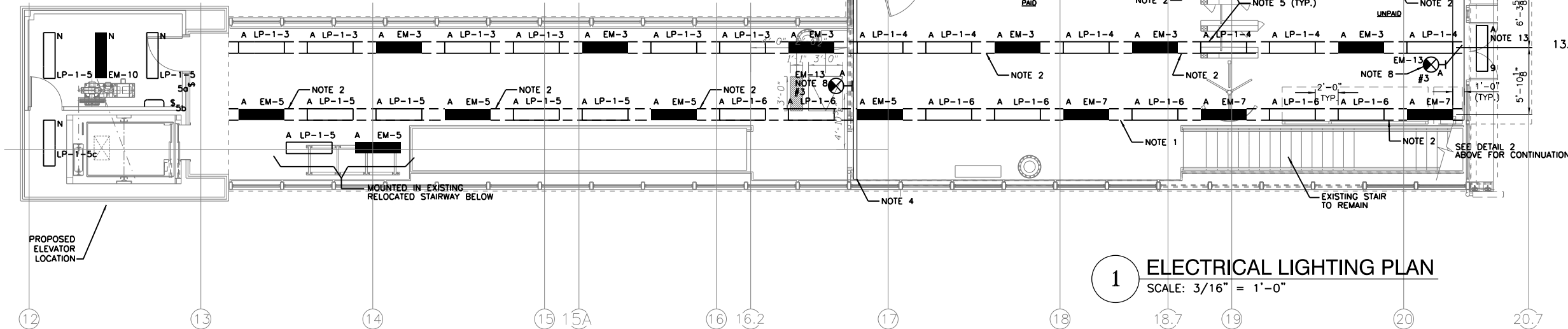


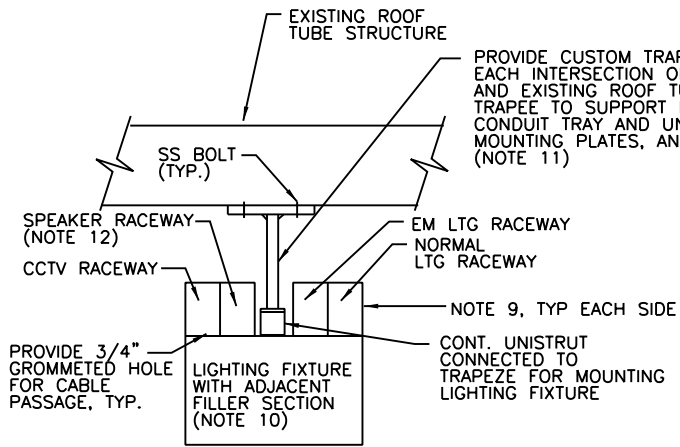
2 PARTIAL STAIRWAY LIGHTING PLAN
SCALE: 3/16" = 1'-0"



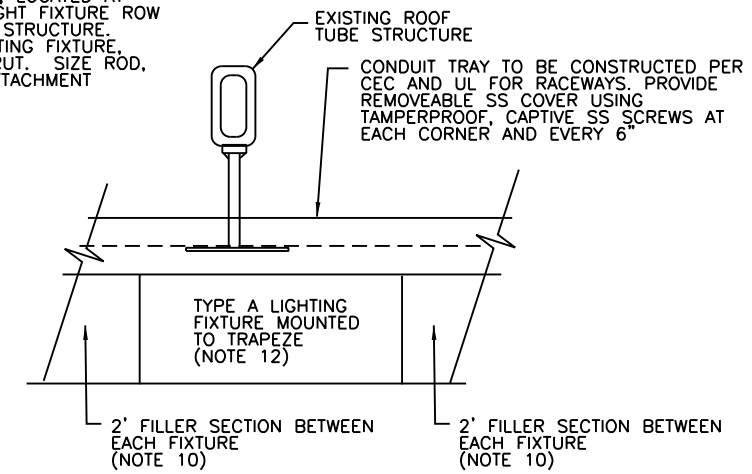
4 MEZZANINE LEVEL LIGHTING PLAN
SCALE: 3/16" = 1'-0"



1 ELECTRICAL LIGHTING PLAN
SCALE: 3/16" = 1'-0"



3 LIGHTING FIXTURE MOUNTING DETAIL
SCALE: NTS (NOTE 11)



NOTES:

- DASHED LINES REPRESENT 18GA #304 SS FILLER SECTION BETWEEN LIGHTING FIXTURES. FILLER TO HAVE SAME WIDTH AND HEIGHT AS ADJACENT LIGHT FIXTURE TO FORM A CONTINUOUS ROW OF LIGHTING. FILLER TO BE ATTACHED TO ADJACENT FIXTURES. SUBMIT FILLER SECTION ALONG WITH LIGHTING FIXTURE.
- PROVIDE PERFORATIONS FOR PA SYSTEM SPEAKER AND PRE-DRILL HOLES FOR MOUNTING SPEAKER BOX. COORDINATE WORK WITH SPEAKER MANUFACTURER. SUBMIT ALONG WITH LIGHTING FIXTURE FOR APPROVAL.
- SEE SHEET 278 FOR LIGHT FIXTURE SCHEDULE.
- CONTINUOUS DIVIDED WIREWAY MOUNTED ON EXISTING STRUCTURAL TUBING ABOVE POURWAY.
- ROUTE ALL LIGHTING, SPEAKER, CCTV AND SIGN CONDUIT AND CABLE HOME RUNS CONCEALED ABOVE CEILING. IN UNPAID AND PAID AREAS, AGENTS KIOSK, AND TOILET ONLY. REFER TO ARCHITECTURAL PLANS FOR CEILING LAYOUT.
- MOUNTED AT MEZZANINE LEVEL.
- TRANSITION FROM WIREWAY TO CONDUIT.
- PENDANT MOUNT EXIT SIGN FROM ROOF STRUCTURE.
- CONDUIT TRAY CONSTRUCTED OF 20GA #304 SS (#4 BRUSH FINISH), WITH 2" REMOVEABLE COVER EVERY 4". ATTACHED CONDUIT TRAY TO LIGHTING FIXTURE TO FORM A CONTINUOUS UNIFORM FINISH ALONG SIDE OF FIXTURE.
- PROVIDE 18 GA #304 SS (#4 BRUSH FINISH) FILLER SECTION TO MATCH FIXTURE. AT EACH SPEAKER AND NS SENSOR LOCATION PROVIDE A REMOVEABLE COVER-BOTTOM USING SS TAMPERPROOF CAPTIVE SCREWS SUNK IN. SCREWS TO BE PROVIDED A MINIMUM AT EACH CORNER.
- CONTRACTOR TO PROVIDE STRUCTURAL CALCULATIONS SHOWING SUPPORT, LOADING, SIZE OF MATERIALS, AND WEIGHTS OF ALL SUPPORTED MATERIALS. CONDUIT TRAY AND FIXTURES.
- PROVIDE ADDITIONAL SLACK IN WIRE TO ALLOW SPEAKER AND LIGHT FIXTURE TO BE LOWERED TO A REASONABLE WORKING HEIGHT.
- WIRE LIGHT FIXTURE THROUGH PC.

USER NAME = habib	DESIGNED JCM	REVISED A 1/20/2014
CHECKED OS		REVISED
PLOT SCALE = 10:8 1/4" / in.	DRAWN HR	REVISED
PLOT DATE = 1/21/2014	CHECKED BC	REVISED

MUN	SECTION	COUNTY	TOTAL SHEETS	SHEET NO.
2090	2013-011R	COOK	356	273
CONTRACT NO.			60W29	

