

NOTE:

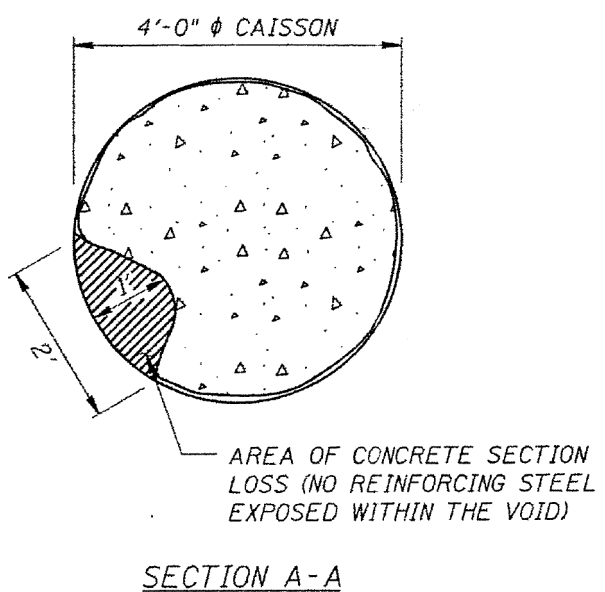
- ① STRUCTURAL REPAIR OF CONCRETE MEASURING 2 FEET WIDE WITH UP TO 1 FOOT PENETRATION DOWN 1 FOOT ON THE NORTH SIDE OF THE CAISSON NEAREST THE NORTHWEST CORNER OF THE PIER.
- ② EPOXY CRACK INJECTION, 1/8 INCH WIDE, NEAR THE MIDPOINT OF THE NORTH PIER FACE FROM THE TOP OF THE PIER WALL TO THE WATERLINE.
- ③ STRUCTURAL REPAIR OF CONCRETE 1.5 FEET WIDE BY 3 INCHES HIGH WITH 4 INCHES PENETRATION ON THE NORTH SIDE OF THE FOURTH CAISSON FROM THE NORTHEAST CORNER OF THE PIER WALL.
- ④ STRUCTURAL REPAIR OF CONCRETE 1.5 FEET WIDE BY 2 INCHES HIGH WITH 3 INCHES PENETRATION AT THE INTERFACE OF THE CAISSON AND THE PIER WALL ON THE EAST SIDE OF THE SECOND CAISSON FROM THE NORTHEAST CORNER OF THE PIER WALL

LEGEND

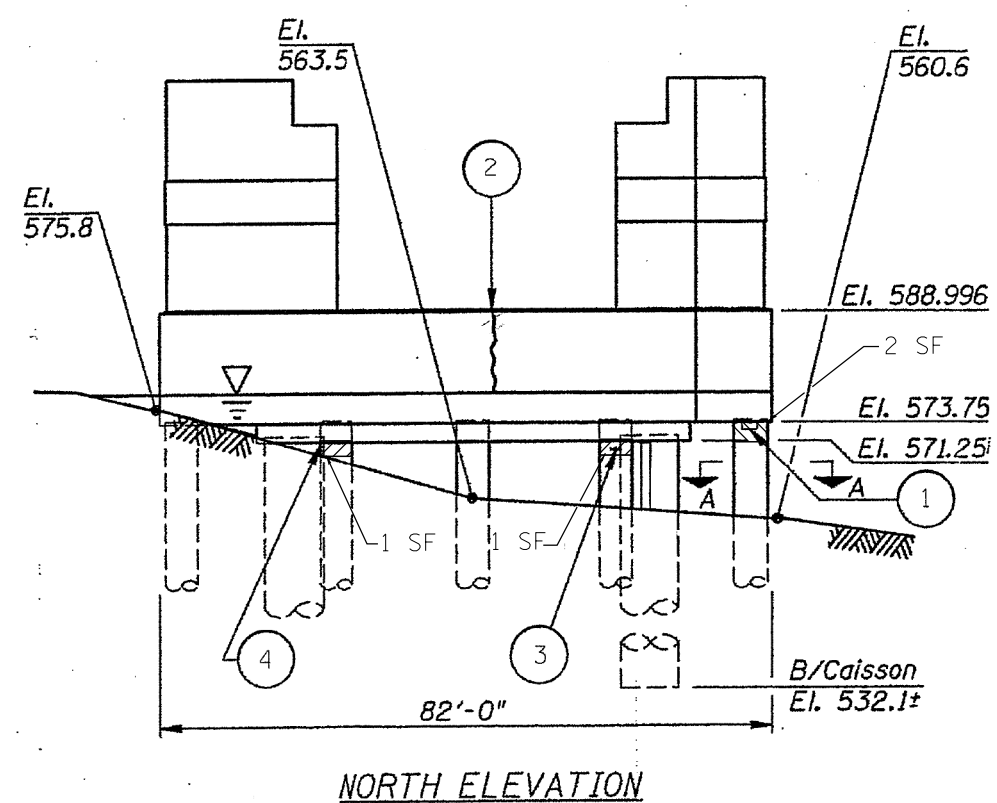
	STRUCTURAL REPAIR OF CONCRETE > 5" (2 SF)
	STRUCTURAL REPAIR OF CONCRETE ≤ 5" (2 SF)

\* NOTE: COST OF THE JACKET WILL BE INCLUDED IN THE PAY ITEM: 'STRUCTURAL REPAIR OF CONCRETE'. SEE SPECIAL PROVISION FOR PILE JACKETING.

PLAN



SECTION A-A



NORTH ELEVATION

LOCATION 3  
IL-43 OVER  
CHICAGO SANITARY &  
SHIPPING CANAL  
S.N. 016-0991

FILE NAME =	USER NAME = hardnettbr	DESIGNED - BH; RA	REVISED -	<b>STATE OF ILLINOIS DEPARTMENT OF TRANSPORTATION</b>	<b>LOCATION 3 BRIDGE REPAIR PLANS</b>		F.A. RTE.	SECTION	COUNTY	TOTAL SHEETS	SHEET NO.	
Default	el:\pwork\pwork\hardnettbr\d0359751\041113-shr-plan.dgn	DRAWN - 11 /20 /13	REVISED -		SCALE:	SHEET 3 OF 5 SHEETS	STA.	TO STA.	VAR.	2013-043BR	COOK	22 17
	PLOT SCALE = 100.0000' / in.	CHECKED - JAM	REVISED -		CONTRACT NO. 60W97							
	PLOT DATE = 12/11/2013	DATE - 11 /21 /13	REVISED -		ILLINOIS FED. AID PROJECT							