


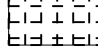
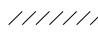
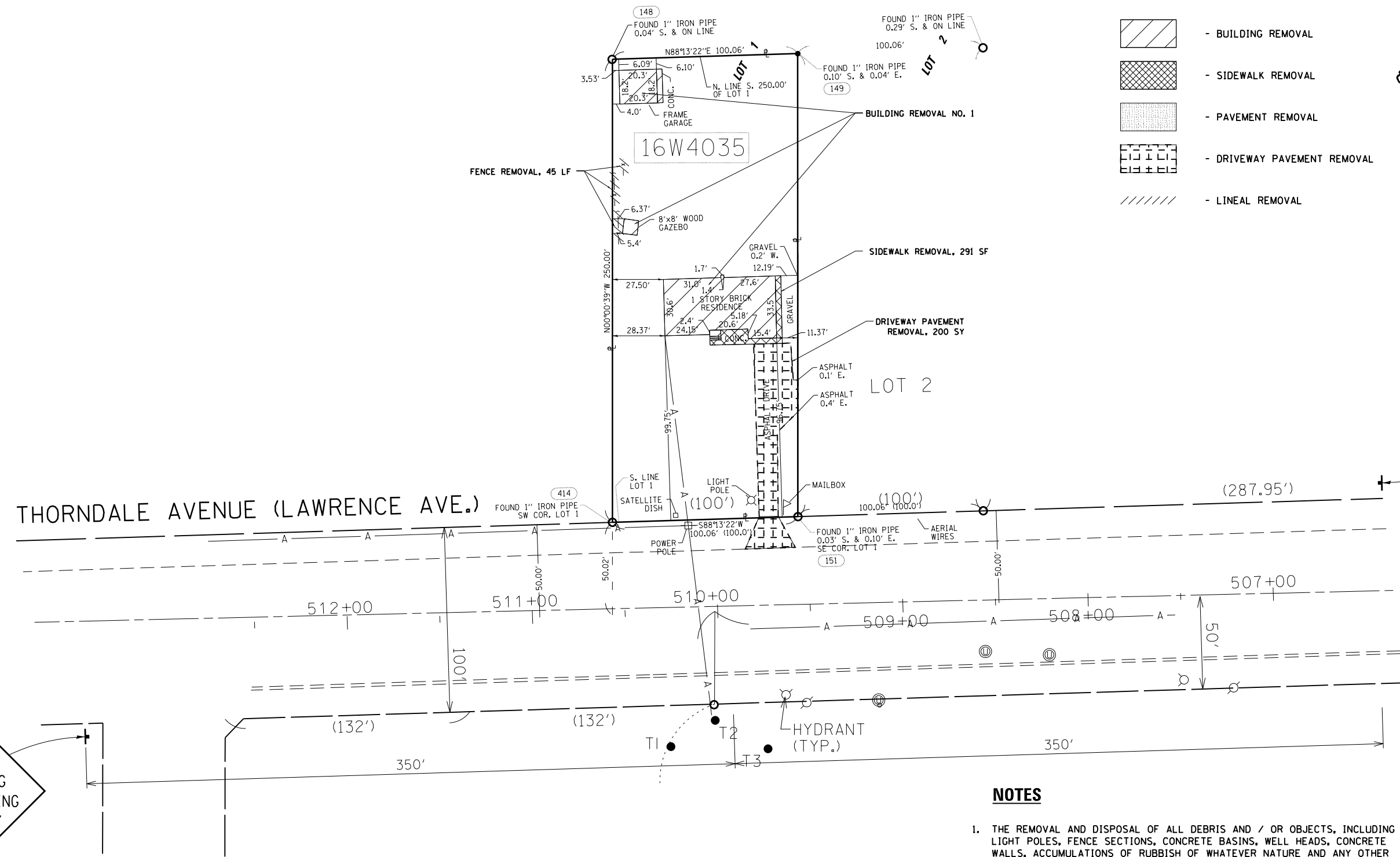
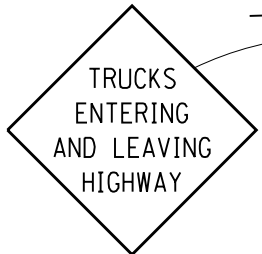


LEGEND

-  - BUILDING REMOVAL
-  - SIDEWALK REMOVAL
-  - PAVEMENT REMOVAL
-  - DRIVEWAY PAVEMENT REMOVAL
-  - LINEAL REMOVAL



W21-1105
(MODIFIED)
48" X 48"



W21-1105
(MODIFIED)
48" X 48"

NOTES

1. THE REMOVAL AND DISPOSAL OF ALL DEBRIS AND / OR OBJECTS, INCLUDING LIGHT POLES, FENCE SECTIONS, CONCRETE BASINS, WELL HEADS, CONCRETE WALLS, ACCUMULATIONS OF RUBBISH OF WHATEVER NATURE AND ANY OTHER STRUCTURES AND ITS FOUNDATIONS THAT ARE NOT PART OF THE BUILDING REMOVAL WITHIN THE CONSTRUCTION LIMITS SHALL BE INCLUDED IN THE UNIT PRICE FOR DEBRIS REMOVAL.
2. REMOVAL OF TREES LESS THAN 6 INCH, SHRUBS, BUSHES, SAPLINGS, WEEDS, STUMPS AND OTHER VEGETATION SHALL BE INCLUDED IN THE UNIT PRICE FOR DEBRIS REMOVAL.
3. THE CONTRACTOR'S VEHICLES, EQUIPMENT, AND OPERATIONS MAY NOT ENCOACH UPON THE THORNDALE AVENUE TRAVELED WAY AT ANY TIME.
4. CONTRACTOR SHALL INSTALL "TRUCKS ENTERING AND LEAVING HIGHWAY" SIGNS, W21-1105 (MODIFIED) IN EACH DIRECTION ON THORNDALE AVENUE APPROACHING BUILDING DEMOLITION SITE. THESE SIGNS SHALL BE PAID AS TEMPORARY INFORMATION SIGNING.

FILE NAME =	USER NAME = marczyk	DESIGNED -	REVISED -	STATE OF ILLINOIS DEPARTMENT OF TRANSPORTATION	BUILDING DEMOLITION PLAN			F.A.P. RTE.	SECTION	COUNTY	TOTAL SHEETS	SHEET NO.
ca:\pwork\pwork\marczyk\0372312\01514-sht-details.dgn		DRAWN -	REVISED -		19W144 THORNDALE AVENUE, ITASCA, IL 60143 (LOCATION 1)			345	2013-073DM	DUPAGE/COOK	13	4
PLOT SCALE = 60.0000' / in.		CHECKED -	REVISED -		SCALE: 1"=30'	SHEET NO. 1 OF 3 SHEETS	STA. TO STA.	CONTRACT NO. 60X50				
PLOT DATE = 12/19/2013		DATE -	REVISED -		ILLINOIS FED. AID PROJECT							