

02-28-14 LETTING ITEM 056

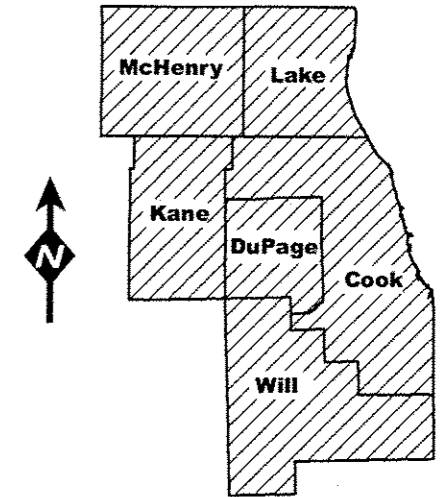
ROUTE	SECTION	COUNTY	TOTAL SHEETS	SHEET NUMBER
VARIOUS	2013-080 I	VARIOUS	16	1

FOR INDEX OF SHEETS SEE SHEET 2

STATE OF ILLINOIS  
 DEPARTMENT OF TRANSPORTATION  
 DIVISION OF HIGHWAYS  
 DISTRICT ONE  
**PROPOSED HIGHWAY PLANS**

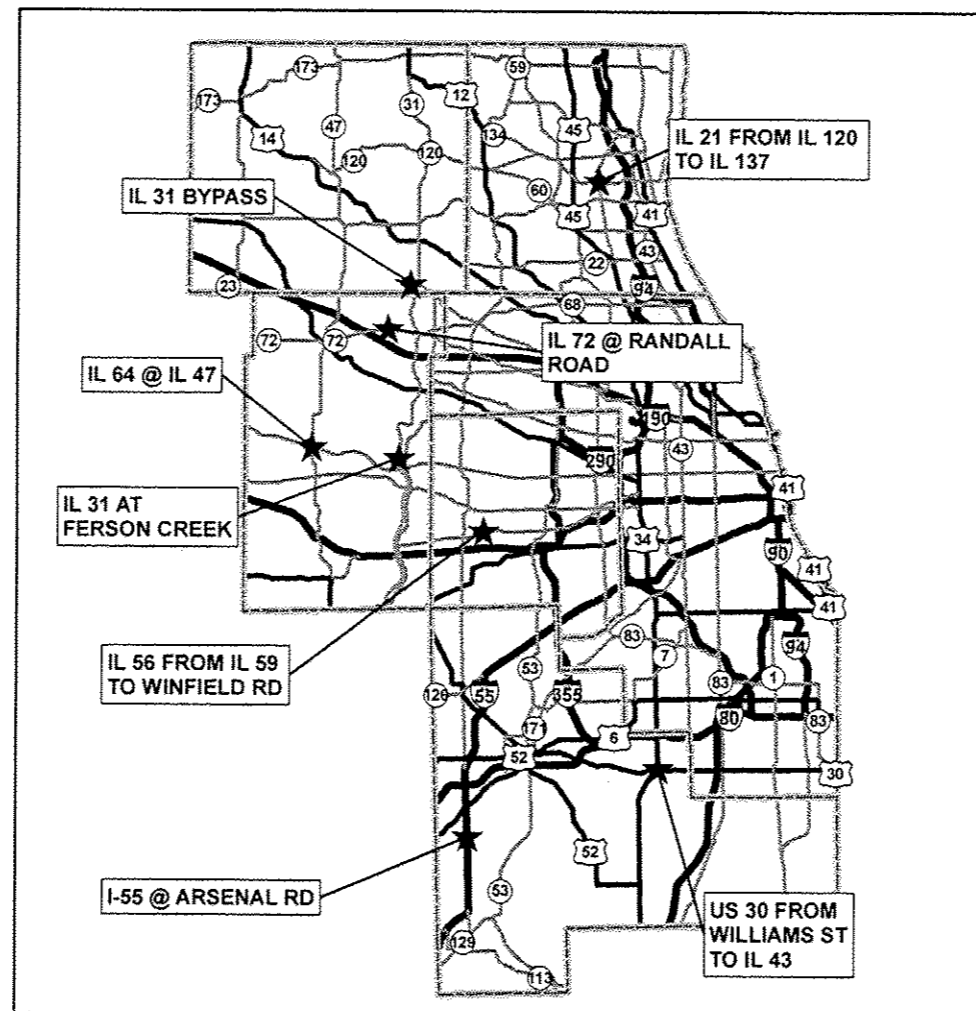
VARIOUS LOCATIONS  
 SECTION 2013-080 I  
 WETLAND AREAS MANAGEMENT  
 VARIOUS COUNTIES  
 C-91-166-14

CONTRACT 60X68  
 D-91-166-14



IMPROVEMENT IS IN VARIOUS  
 LOCATIONS WITHIN DISTRICT  
 ONE

LOCATION OF IMPROVEMENT INDICATED THUS:



DISTRICT ONE BUREAU OF MAINTENANCE  
 MAINTENANCE DESIGN ENGINEER: R. WANNERT/ T. JACKSON

CONTRACT NO. 60X68

STATE OF ILLINOIS  
 DEPARTMENT OF TRANSPORTATION  
 DIVISION OF HIGHWAYS  
 SUBMITTED: DECEMBER 23, 2013  
  
 DISTRICT ENGINEER  
Jan 24 2014  
  
 ENGINEER OF DESIGN AND ENVIRONMENT  
Jan 24 2014  
  
 DIRECTOR, DIVISION OF HIGHWAYS

**PRINTED BY THE AUTHORITY  
 OF THE STATE OF ILLINOIS**

J.U.L.I.E.: JOINT UTILITY LOCATION  
 INFORMATION FOR EXCAVATION  
 (800) 892-0123

ROUTE	SECTION	COUNTY	TOTAL SHEETS	SHEET NUMBER
VARIOUS	2013-080 I	VARIOUS	16	2

CONTRACT 60X68

**INDEX OF SHEETS**

- 1) COVER SHEET
- 2) INDEX OF SHEETS, STATE STANDARDS, GENERAL NOTES
- 3) SUMMARY OF QUANTITIES
- 4) SUMMARY OF QUANTITIES
- 5) SAMPLE WORK ORDER
- 6) SCHEDULE OF QUANTITIES - YEAR 2014
- 7) SCHEDULE OF QUANTITIES - YEAR 2015
- 8) SCHEDULE OF QUANTITIES - YEAR 2016
- 9) LOCATION MAPS - IL 21 FROM IL 120 TO IL 137 AND IL 56 FROM IL 59 TO WINFIELD RD
- 10) LOCATION MAPS - IL 47 AT 64 AND IL 72 AT RANDALL RD
- 11) LOCATION MAPS - IL 31 BYPASS AND I-55 AT ARSENAL RD
- 12) LOCATION MAPS - US 30 FROM WILLIAMS ST TO IL 43 AND IL 31 AT FERSON CREEK
- 13) SEEDING PLAN - I-55 AT ARSENAL RD - SOUTH INTERCHANGE
- 14) SEEDING PLAN - I-55 AT ARSENAL RD - NORTH INTERCHANGE
- 15) TC-10 TRAFFIC CONTROL AND PROTECTION FOR SIDE ROADS, INTERSECTIONS, AND DRIVEWAYS
- 16) TC-17 TRAFFIC CONTROL FOR FREEWAY SHOULDER CLOSURES AND PARTIAL RAMP CLOSURES

**GENERAL NOTES**

- Engineer may provide IDOT purchased herbicide to be tank mixed at no additional cost to the Department.
- Random spot check inspections by the Engineer will occur to verify weed control calibration rates.
- Perennial plants shall be installed as directed by the Engineer with 7 day notice to Contractor.
- Perennial plants species and quantities will vary based on location, performance, and 404 wetland permit requirements. Exact quantities and varieties of plugs will be provided on an as-needed basis directed by the Engineer.
- Interseeding, Class 4B (Modified) and Interseeding, Class 5A (Modified) will be mechanically drilled during winter months when planting surface is frozen, or as directed by Engineer.

**STATE STANDARDS**

701001-02    701006-05    701101-04    701106-02  
701201-04    701301-04    701421-06    701501-06  
701601-09    701901-03

ILLINOIS DEPARTMENT OF TRANSPORTATION  
WETLAND AREAS MANAGEMENT  
INDEX OF SHEETS, STATE STANDARDS,  
GENERAL NOTES

<b>ROUTE</b>	<b>SECTION</b>	<b>COUNTY</b>	<b>TOTAL SHEETS</b>	<b>SHEET NUMBER</b>
VARIOUS	2013-080 I	VARIOUS	16	3

**SUMMARY OF QUANTITIES**

URBAN  
0020  
100%  
STATE

**CONTRACT 60X68**

CODE NO.	ITEM	UNIT	TOTAL QUANTITY	
20101700	SUPPLEMENTAL WATERING	UNIT	2,000	2,000
21101610	TOPSOIL FURNISH AND PLACE, 3"	SQ YD	10,043	10,043
25000750	MOWING	ACRE	322.43	322.43
25100630	EROSION CONTROL BLANKET	SQ YD	10,043	10,043
28000250	TEMPORARY EROSION CONTROL SEEDING	POUND	1,250	1,250
28100207	STONE RIPRAP, CLASS A4	TON	225	225
67100100	MOBILIZATION	LSUM	1	1
K0013000	PERENNIAL PLANTS, PRAIRIE TYPE, 2" DIAMETER BY 4" DEEP PLUG	UNIT	200.5	200.5
K0013030	PERENNIAL PLANTS, WETLAND TYPE, 2" DIAMETER BY 4" DEEP PLUG	UNIT	260.5	260.5
K0026850	PERENNIAL PLANT CARE	SQ YD	8,000	8,000
K0029614	WEED CONTROL, AQUATIC	GALLON	23.24	23.24
K0029624	WEED CONTROL, TEASEL	GALLON	85.9	85.9
K1002564	INTERSEEDING (SPECIAL)	ACRE	1	1
X0325222	WEED CONTROL, BASAL TREATMENT	GALLON	2	2

ILLINOIS DEPARTMENT OF TRANSPORTATION  
WETLAND AREAS MANAGEMENT  
SUMMARY OF QUANTITIES

ROUTE	SECTION	COUNTY	TOTAL SHEETS	SHEET NUMBER
VARIOUS	2013-080 I	VARIOUS	16	4

**SUMMARY OF QUANTITIES**

*URBAN  
0020  
100%  
STATE*

**CONTRACT 60X68**


CODE NO.	ITEM	UNIT	TOTAL QUANTITY	
X2500500	INTERSEEDING, CLASS 4 (SPECIAL)	ACRE	41.49	41.49
X2503315	INTERSEEDING, CLASS 4A (MODIFIED)	ACRE	61.43	61.43
X2503318	INTERSEEDING, CLASS 4B (MODIFIED)	ACRE	16.37	16.37
X2503321	INTERSEEDING, CLASS 5 (MODIFIED)	ACRE	6.85	6.85
X2503323	INTERSEEDING, CLASS 5A (MODIFIED)	ACRE	1.65	1.65

ILLINOIS DEPARTMENT OF TRANSPORTATION  
WETLAND AREAS MANAGEMENT  
SUMMARY OF QUANTITIES

ROUTE	SECTION	COUNTY	TOTAL SHEETS	SHEET NUMBER
VARIOUS	2013-080 I	VARIOUS	16	5

CONTRACT 60X68

**SAMPLE WORK ORDER**

 <b>Illinois Department of Transportation</b>	Contract Number:
	Weed Control Work Order #:
	Route:

Standard 30-day application	Specialized 10-Day Priority
-----------------------------	-----------------------------

Cook	DuPage	Kane	Work Order Prepared By	Team Section
Lake	McHenry	Will		

**Location:**

**Instructions:**  
Refer to contract plan sheets, which are hereby made a part of this work order ( \_\_\_ sheets)

WORK INCLUDED IN THIS WORK ORDER			
Pay Item	Est. Map Qty.	Priority Multiplier	Est. Work Order Qty.
20101700 - Supplemental Watering	Units		Units
21101610 - Topsoil Furnish and Place, 3"	Sq Yd		Sq Yd
25000750 - Mowing	Acres		Acres
25100630 - Erosion Control Blanket	Sq Yd		Sq Yd
28000250 - Temporary Erosion Control Seeding	Pound		Pound
38100207 - Stone Riprap, Class A+	Ton		Ton
K0013000 - Perennial Plants, Prairie Type, 2X4 Plug	Unit		Unit
K0013030 - Perennial Plants, Wetland Type, 2X4 Plug	Unit		Unit
K0026850 - Perennial Plant Care	Sq Yd		Sq Yd
K0029614 - Weed Control, Aquatic	Gallons		Gallons
K0029614 - Weed Control, Teasel	Gallons		Gallons
X0325222 - Weed Control, Basal Treatment	Gallons		Gallons
X2500500 - Interseeding, Class 4 (Special)	Acre		Acre
X2503315 - Interseeding, Class 4A (Modified)	Acre		Acre
X2503318 - Interseeding, Class 4B (Modified)	Acre		Acre
X2503321 - Interseeding, Class 5 (Modified)	Acre		Acre
X2503323 - Interseeding, Class 5A (Modified)	Acre		Acre

AUTHORIZATION OF WORK ORDER	
Resident Engineer/Technician Signature	Date/Time
Contractor Signature (to acknowledge receipt)	Date/Time

APPROVED PERSONNEL (RE USE ONLY)	
Name	License Number

CERTIFICATION OF COMPLETION	
Contractor Signature	Date/Time

ACCEPTANCE OF COMPLETED WORK	
Resident Engineer/Technician Signature	Date/Time

ILLINOIS DEPARTMENT OF TRANSPORTATION  
WETLAND AREAS MANAGEMENT  
SAMPLE WORK ORDER

ROUTE	SECTION	COUNTY	TOTAL SHEETS	SHEET NUMBER
VARIOUS	2013-080 I	VARIOUS	16	6

CONTRACT 60X68

**SCHEDULE OF QUANTITIES - YR 2014**

IL 21 FROM IL 120 TO IL 137- LAKE COUNTY		
BASIN A		
DESCRIPTION OF WORK	UNIT	QUANTITY
MOWING	ACRE	4.89
WEED CONTROL, AQUATIC	GALLON	0.2
WEED CONTROL, TEASEL	GALLON	4.89

IL 21 FROM IL 120 TO IL 137- LAKE COUNTY		
BASIN B		
DESCRIPTION OF WORK	UNIT	QUANTITY
MOWING	ACRE	2.5
WEED CONTROL, AQUATIC	GALLON	0.47
WEED CONTROL, TEASEL	GALLON	2.5

IL 56 FROM IL 59 TO WINFIELD RD - DU PAGE COUNTY		
BMP SWALE		
DESCRIPTION OF WORK	UNIT	QUANTITY
MOWING	ACRE	1.3
WEED CONTROL, AQUATIC	GALLON	0.105
WEED CONTROL, TEASEL	GALLON	1.3

IL 56 FROM IL 59 TO WINFIELD RD - DU PAGE COUNTY		
BASIN # 1		
DESCRIPTION OF WORK	UNIT	QUANTITY
MOWING	ACRE	8
WEED CONTROL, AQUATIC	GALLON	0.91
WEED CONTROL, TEASEL	GALLON	3.7
PERENNIAL PLANT CARE	SQ YD	1000

IL 64 AT IL 47 - KANE COUNTY		
BIOSWALE		
DESCRIPTION OF WORK	UNIT	QUANTITY
MOWING	ACRE	0.03
WEED CONTROL, AQUATIC	GALLON	0.01
WEED CONTROL, TEASEL	GALLON	0.02
STONE RIPRAP, CLASS A4	TON	10

IL 72 AT RANDALL RD - KANE COUNTY		
BMP # 1 - BIOSWALE		
DESCRIPTION OF WORK	UNIT	QUANTITY
MOWING	ACRE	0.09
WEED CONTROL, AQUATIC	GALLON	0.045
WEED CONTROL, TEASEL	GALLON	0.09
STONE RIPRAP, CLASS A4	TON	10

US 30 FROM WILLIAMS ST TO IL 43 - WILL COUNTY		
BMP 1 - 4 AND BASINS 1 & 2		
DESCRIPTION OF WORK	UNIT	QUANTITY
MOWING	ACRE	5
WEED CONTROL, AQUATIC	GALLON	1
WEED CONTROL, TEASEL	GALLON	0.9
STONE RIPRAP, CLASS A4	TON	15

US 30 FROM WILLIAMS ST TO IL 43 - WILL COUNTY		
RAIN GARDEN 1 - 3		
DESCRIPTION OF WORK	UNIT	QUANTITY
MOWING	ACRE	12
WEED CONTROL, AQUATIC	GALLON	0.29
WEED CONTROL, TEASEL	GALLON	0.58
PERENNIAL PLANT CARE	SQ YD	3200
STONE RIPRAP, CLASS A4	TON	20

IL 31 BYPASS - MCHENRY COUNTY		
BMP 1 - 4 AND CRYSTAL CREEK		
DESCRIPTION OF WORK	UNIT	QUANTITY
MOWING	ACRE	20
WEED CONTROL, AQUATIC	GALLON	1.5
WEED CONTROL, TEASEL	GALLON	6
STONE RIPRAP, CLASS A4	TON	100

I-55 AT ARSENAL RD - WILL COUNTY		
SOUTH AND NORTH INTERCHANGES		
DESCRIPTION OF WORK	UNIT	QUANTITY
MOWING	ACRE	58
WEED CONTROL, AQUATIC	GALLON	4
WEED CONTROL, TEASEL	GALLON	20
INTERSEEDING, CLASS 4 (SPECIAL)	ACRE	18.3
INTERSEEDING, CLASS 4A (MODIFIED)	ACRE	33.5
INTERSEEDING, CLASS 4B (MODIFIED)	ACRE	6.8
PER PLANTS, WETLAND TYPE 2X4 PLUG	UNIT	65
STONE RIPRAP, CLASS A4	TON	70

ILLINOIS DEPARTMENT OF TRANSPORTATION  
WETLAND AREAS MANAGEMENT  
SCHEDULE OF QUANTITIES - YR 2014

<b>ROUTE</b>	<b>SECTION</b>	<b>COUNTY</b>	<b>TOTAL SHEETS</b>	<b>SHEET NUMBER</b>
VARIOUS	2013-080 I	VARIOUS	16	7

CONTRACT 60X68

**SCHEDULE OF QUANTITIES - YR 2015**

IL 21 FROM IL 120 TO IL 137- LAKE COUNTY		
BASIN A		
DESCRIPTION OF WORK	UNIT	QUANTITY
MOWING	ACRE	4.89
WEED CONTROL, AQUATIC	GALLON	0.155
WEED CONTROL, TEASEL	GALLON	3
INTERSEEDING, CLASS 4 (SPECIAL)	ACRE	3
INTERSEEDING, CLASS 5 (MODIFIED)	ACRE	0.28
PER PLANTS, PRAIRIE TYPE 2X4 PLUG	UNIT	15
PER PLANTS, WETLAND TYPE 2X4 PLUG	UNIT	5
EROSION CONTROL BLANKET	SQ YD	242
TOPSOIL FURNISH AND PLACE, 3"	SQ YD	242

IL 56 FROM IL 59 TO WINFIELD RD - DU PAGE COUNTY		
BMP SWALE		
DESCRIPTION OF WORK	UNIT	QUANTITY
MOWING	ACRE	1.3
WEED CONTROL, AQUATIC	GALLON	0.105
WEED CONTROL, TEASEL	GALLON	1.3
INTERSEEDING, CLASS 4A (MODIFIED)	ACRE	0.65
PER PLANTS, PRAIRIE TYPE 2X4 PLUG	UNIT	13
PER PLANTS, WETLAND TYPE 2X4 PLUG	UNIT	10
EROSION CONTROL BLANKET	SQ YD	605
TOPSOIL FURNISH AND PLACE, 3"	SQ YD	605

US 30 FROM WILLIAMS ST TO IL 43 - WILL COUNTY		
BASINS 1 - 2		
DESCRIPTION OF WORK	UNIT	QUANTITY
MOWING	ACRE	2.5
WEED CONTROL, AQUATIC	GALLON	0.5
WEED CONTROL, TEASEL	GALLON	0.45
INTERSEEDING, CLASS 4 (SPECIAL)	ACRE	0.23
INTERSEEDING, CLASS 4B (MODIFIED)	ACRE	0.5
PER PLANTS, PRAIRIE TYPE 2X4 PLUG	UNIT	10
PER PLANTS, WETLAND TYPE 2X4 PLUG	UNIT	20
EROSION CONTROL BLANKET	SQ YD	1210
TOPSOIL FURNISH AND PLACE, 3"	SQ YD	1210

IL 31 BYPASS - MCHENRY COUNTY		
CRYSTAL CREEK		
DESCRIPTION OF WORK	UNIT	QUANTITY
MOWING	ACRE	6
WEED CONTROL, AQUATIC	GALLON	0.5
WEED CONTROL, TEASEL	GALLON	1.7
WEED CONTROL, BASAL TREATMENT	GALLON	1
INTERSEEDING (SPECIAL)	ACRE	1
INTERSEEDING, CLASS 4 (SPECIAL)	ACRE	0.59
INTERSEEDING, CLASS 4A (MODIFIED)	ACRE	0.28
INTERSEEDING, CLASS 4B (MODIFIED)	ACRE	0.25
INTERSEEDING, CLASS 5 (MODIFIED)	ACRE	0.87
INTERSEEDING, CLASS 5A (MODIFIED)	ACRE	0.25
PER PLANTS, PRAIRIE TYPE 2X4 PLUG	UNIT	15
PER PLANTS, WETLAND TYPE 2X4 PLUG	UNIT	10
EROSION CONTROL BLANKET	SQ YD	1210
TOPSOIL FURNISH AND PLACE, 3"	SQ YD	1210

IL 21 FROM IL 120 TO IL 137- LAKE COUNTY		
BASIN B		
DESCRIPTION OF WORK	UNIT	QUANTITY
MOWING	ACRE	2.5
WEED CONTROL, AQUATIC	GALLON	0.47
WEED CONTROL, TEASEL	GALLON	1.25
INTERSEEDING, CLASS 4 (SPECIAL)	ACRE	1.25
INTERSEEDING, CLASS 5 (MODIFIED)	ACRE	0.8
PER PLANTS, PRAIRIE TYPE 2X4 PLUG	UNIT	15
PER PLANTS, WETLAND TYPE 2X4 PLUG	UNIT	5
EROSION CONTROL BLANKET	SQ YD	1210
TOPSOIL FURNISH AND PLACE, 3"	SQ YD	1210

IL 56 FROM IL 59 TO WINFIELD RD - DU PAGE COUNTY		
BASIN # 1		
DESCRIPTION OF WORK	UNIT	QUANTITY
MOWING	ACRE	8
WEED CONTROL, AQUATIC	GALLON	0.91
WEED CONTROL, TEASEL	GALLON	2.5
INTERSEEDING, CLASS 4 (SPECIAL)	ACRE	0.85
INTERSEEDING, CLASS 4A (MODIFIED)	ACRE	1
INTERSEEDING, CLASS 4B (MODIFIED)	ACRE	0.7
INTERSEEDING, CLASS 5 (MODIFIED)	ACRE	1.85
INTERSEEDING, CLASS 5A (MODIFIED)	ACRE	0.7
PER PLANTS, PRAIRIE TYPE 2X4 PLUG	UNIT	40
PER PLANTS, WETLAND TYPE 2X4 PLUG	UNIT	10
EROSION CONTROL BLANKET	SQ YD	2420
TOPSOIL FURNISH AND PLACE, 3"	SQ YD	2420

US 30 FROM WILLIAMS ST TO IL 43 - WILL COUNTY		
RAIN GARDENS 1 - 3		
DESCRIPTION OF WORK	UNIT	QUANTITY
MOWING	ACRE	12
WEED CONTROL, AQUATIC	GALLON	0.13
WEED CONTROL, TEASEL	GALLON	0.3
INTERSEEDING, CLASS 4 (SPECIAL)	ACRE	0.15
INTERSEEDING, CLASS 4B (MODIFIED)	ACRE	0.18
INTERSEEDING, CLASS 5A (MODIFIED)	ACRE	0.15
PER PLANTS, PRAIRIE TYPE 2X4 PLUG	UNIT	4
PER PLANTS, WETLAND TYPE 2X4 PLUG	UNIT	8
EROSION CONTROL BLANKET	SQ YD	605
TOPSOIL FURNISH AND PLACE, 3"	SQ YD	605
PERENNIAL PLANT CARE	SQ YD	3200

I-55 AT ARSENAL RD - WILL COUNTY		
SOUTH AND NORTH INTERCHANGES		
DESCRIPTION OF WORK	UNIT	QUANTITY
MOWING	ACRE	58
WEED CONTROL, AQUATIC	GALLON	4
WEED CONTROL, TEASEL	GALLON	10
INTERSEEDING, CLASS 4 (SPECIAL)	ACRE	9
INTERSEEDING, CLASS 4A (MODIFIED)	ACRE	17
INTERSEEDING, CLASS 4B (MODIFIED)	ACRE	3.4
PER PLANTS, WETLAND TYPE 2X4 PLUG	UNIT	32

IL 64 AT IL 47 - KANE COUNTY		
BIOSWALE		
DESCRIPTION OF WORK	UNIT	QUANTITY
MOWING	ACRE	0.03
WEED CONTROL, AQUATIC	GALLON	0.01
WEED CONTROL, TEASEL	GALLON	0.02
INTERSEEDING, CLASS 4 (SPECIAL)	ACRE	0.02
INTERSEEDING, CLASS 4B (MODIFIED)	ACRE	0.01
PER PLANTS, PRAIRIE TYPE 2X4 PLUG	UNIT	2
PER PLANTS, WETLAND TYPE 2X4 PLUG	UNIT	2

US 30 FROM WILLIAMS ST TO IL 43 - WILL COUNTY		
BMP 1 - 4		
DESCRIPTION OF WORK	UNIT	QUANTITY
MOWING	ACRE	2.5
WEED CONTROL, AQUATIC	GALLON	0.23
WEED CONTROL, TEASEL	GALLON	1
INTERSEEDING, CLASS 4 (SPECIAL)	ACRE	0.5
INTERSEEDING, CLASS 4B (MODIFIED)	ACRE	0.23
PER PLANTS, PRAIRIE TYPE 2X4 PLUG	UNIT	15
PER PLANTS, WETLAND TYPE 2X4 PLUG	UNIT	7.5
EROSION CONTROL BLANKET	SQ YD	1210
TOPSOIL FURNISH AND PLACE, 3"	SQ YD	1210

IL 31 BYPASS - MCHENRY COUNTY		
BMP 1 - 4		
DESCRIPTION OF WORK	UNIT	QUANTITY
MOWING	ACRE	7
WEED CONTROL, AQUATIC	GALLON	1.3
WEED CONTROL, TEASEL	GALLON	3
INTERSEEDING, CLASS 4B (MODIFIED)	ACRE	1.25
PER PLANTS, WETLAND TYPE 2X4 PLUG	UNIT	15
EROSION CONTROL BLANKET	SQ YD	1210
TOPSOIL FURNISH AND PLACE, 3"	SQ YD	1210

IL 31 AT FERSON CREEK - KANE COUNTY		
BMP 1		
DESCRIPTION OF WORK	UNIT	QUANTITY
MOWING	ACRE	1
WEED CONTROL, TEASEL	GALLON	1

IL 72 AT RANDALL RD - KANE COUNTY		
BMP # 1 - BIOSWALE		
DESCRIPTION OF WORK	UNIT	QUANTITY
MOWING	ACRE	0.09
WEED CONTROL, AQUATIC	GALLON	0.045
WEED CONTROL, TEASEL	GALLON	0.09
INTERSEEDING, CLASS 4B (MODIFIED)	ACRE	0.05
PER PLANTS, WETLAND TYPE 2X4 PLUG	UNIT	3

ILLINOIS DEPARTMENT OF TRANSPORTATION  
WETLAND AREAS MANAGEMENT  
SCHEDULE OF QUANTITIES - YR 2015

ROUTE	SECTION	COUNTY	TOTAL SHEETS	SHEET NUMBER
VARIOUS	2013-080 I	VARIOUS	16	8

CONTRACT 60X68

**SCHEDULE OF QUANTITIES - YR 2016**

IL 21 FROM IL 120 TO IL 137- LAKE COUNTY		
BASIN A		
DESCRIPTION OF WORK	UNIT	QUANTITY
MOWING	ACRE	4.89
WEED CONTROL, AQUATIC	GALLON	0.155
WEED CONTROL, TEASEL	GALLON	2
INTERSEEDING, CLASS 4 (SPECIAL)	ACRE	1
INTERSEEDING, CLASS 5 (MODIFIED)	ACRE	0.25
PER PLANTS, PRAIRIE TYPE 2X4 PLUG	UNIT	10
PER PLANTS, WETLAND TYPE 2X4 PLUG	UNIT	3
EROSION CONTROL BLANKET	SQ YD	121
TOPSOIL FURNISH AND PLACE, 3"	SQ YD	121

IL 21 FROM IL 120 TO IL 137- LAKE COUNTY		
BASIN B		
DESCRIPTION OF WORK	UNIT	QUANTITY
MOWING	ACRE	2.5
WEED CONTROL, AQUATIC	GALLON	0.47
WEED CONTROL, TEASEL	GALLON	1.25
INTERSEEDING, CLASS 4 (SPECIAL)	ACRE	1.25
INTERSEEDING, CLASS 5 (MODIFIED)	ACRE	0.8
PER PLANTS, PRAIRIE TYPE 2X4 PLUG	UNIT	10
PER PLANTS, WETLAND TYPE 2X4 PLUG	UNIT	5

IL 64 AT IL 47 - KANE COUNTY		
BIOSWALE		
DESCRIPTION OF WORK	UNIT	QUANTITY
MOWING	ACRE	0.03
WEED CONTROL, AQUATIC	GALLON	0.01
WEED CONTROL, TEASEL	GALLON	0.02
PER PLANTS, PRAIRIE TYPE 2X4 PLUG	UNIT	1
PER PLANTS, WETLAND TYPE 2X4 PLUG	UNIT	1

IL 72 AT RANDALL RD - KANE COUNTY		
BMP # 1 - BIOSWALE		
DESCRIPTION OF WORK	UNIT	QUANTITY
MOWING	ACRE	0.09
WEED CONTROL, AQUATIC	GALLON	0.045
WEED CONTROL, TEASEL	GALLON	0.09
PER PLANTS, WETLAND TYPE 2X4 PLUG	UNIT	2

IL 56 FROM IL 59 TO WINFIELD RD - DU PAGE COUNTY		
BMP SWALE		
DESCRIPTION OF WORK	UNIT	QUANTITY
MOWING	ACRE	1.3
WEED CONTROL, AQUATIC	GALLON	0.105
WEED CONTROL, TEASEL	GALLON	0.5
PER PLANTS, PRAIRIE TYPE 2X4 PLUG	UNIT	7
PER PLANTS, WETLAND TYPE 2X4 PLUG	UNIT	5

IL 56 FROM IL 59 TO WINFIELD RD - DU PAGE COUNTY		
BASIN # 1		
DESCRIPTION OF WORK	UNIT	QUANTITY
MOWING	ACRE	8
WEED CONTROL, AQUATIC	GALLON	0.91
WEED CONTROL, TEASEL	GALLON	1.5
INTERSEEDING, CLASS 4 (SPECIAL)	ACRE	0.85
INTERSEEDING, CLASS 4A (MODIFIED)	ACRE	1
INTERSEEDING, CLASS 4B (MODIFIED)	ACRE	0.7
INTERSEEDING, CLASS 5 (MODIFIED)	ACRE	1.85
INTERSEEDING, CLASS 5A (MODIFIED)	ACRE	0.7
PER PLANTS, PRAIRIE TYPE 2X4 PLUG	UNIT	20
PER PLANTS, WETLAND TYPE 2X4 PLUG	UNIT	5

US 30 FROM WILLIAMS ST TO IL 43 - WILL COUNTY		
BMP 1 - 4		
DESCRIPTION OF WORK	UNIT	QUANTITY
MOWING	ACRE	2.5
WEED CONTROL, AQUATIC	GALLON	0.23
WEED CONTROL, TEASEL	GALLON	1
PER PLANTS, PRAIRIE TYPE 2X4 PLUG	UNIT	7.5
PER PLANTS, WETLAND TYPE 2X4 PLUG	UNIT	3

US 30 FROM WILLIAMS ST TO IL 43 - WILL COUNTY		
BASINS 1 - 2		
DESCRIPTION OF WORK	UNIT	QUANTITY
MOWING	ACRE	2.5
WEED CONTROL, AQUATIC	GALLON	0.5
WEED CONTROL, TEASEL	GALLON	0.45
PER PLANTS, PRAIRIE TYPE 2X4 PLUG	UNIT	4
PER PLANTS, WETLAND TYPE 2X4 PLUG	UNIT	10

US 30 FROM WILLIAMS ST TO IL 43 - WILL COUNTY		
RAIN GARDENS 1 - 3		
DESCRIPTION OF WORK	UNIT	QUANTITY
MOWING	ACRE	12
WEED CONTROL, AQUATIC	GALLON	0.13
WEED CONTROL, TEASEL	GALLON	0.3
PER PLANTS, PRAIRIE TYPE 2X4 PLUG	UNIT	2
PER PLANTS, WETLAND TYPE 2X4 PLUG	UNIT	4
PERENNIAL PLANT CARE	SQ YD	1600

IL 31 BYPASS - MCHENRY COUNTY		
BMP 1 - 4		
DESCRIPTION OF WORK	UNIT	QUANTITY
MOWING	ACRE	7
WEED CONTROL, AQUATIC	GALLON	1.3
WEED CONTROL, TEASEL	GALLON	1.5
INTERSEEDING, CLASS 4B (MODIFIED)	ACRE	0.6
PER PLANTS, WETLAND TYPE 2X4 PLUG	UNIT	10

IL 31 BYPASS - MCHENRY COUNTY		
CRYSTAL CREEK		
DESCRIPTION OF WORK	UNIT	QUANTITY
MOWING	ACRE	6
WEED CONTROL, AQUATIC	GALLON	0.5
WEED CONTROL, TEASEL	GALLON	1.7
WEED CONTROL, BASAL TREATMENT	GALLON	1
PER PLANTS, PRAIRIE TYPE 2X4 PLUG	UNIT	10
PER PLANTS, WETLAND TYPE 2X4 PLUG	UNIT	5

I-55 AT ARSENAL RD - WILL COUNTY		
SOUTH AND NORTH INTERCHANGES		
DESCRIPTION OF WORK	UNIT	QUANTITY
MOWING	ACRE	58
WEED CONTROL, AQUATIC	GALLON	2
WEED CONTROL, TEASEL	GALLON	10
INTERSEEDING, CLASS 4 (SPECIAL)	ACRE	4.5
INTERSEEDING, CLASS 4A (MODIFIED)	ACRE	8
INTERSEEDING, CLASS 4B (MODIFIED)	ACRE	1.7
PER PLANTS, WETLAND TYPE 2X4 PLUG	UNIT	15

ILLINOIS DEPARTMENT OF TRANSPORTATION  
WETLAND AREAS MANAGEMENT  
SCHEDULE OF QUANTITIES - YR 2016

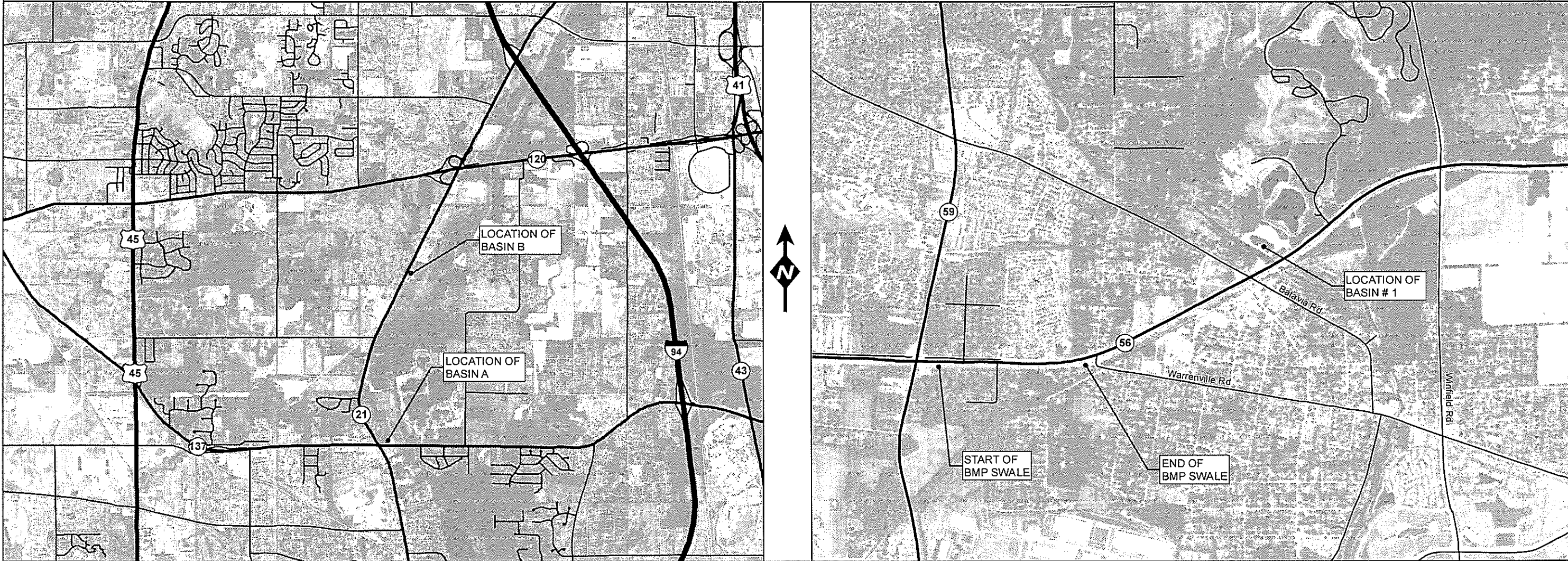


	ROUTE	SECTION	COUNTY	TOTAL SHEETS	SHEET NUMBER
	VARIOUS	2013-080 I	VARIOUS	16	9

CONTRACT 60X68

IL 21 FROM IL 120 TO IL 137 - LAKE COUNTY

IL 56 FROM IL 59 TO WINFIELD RD - DU PAGE COUNTY



ILLINOIS DEPARTMENT OF TRANSPORTATION  
WETLAND AREAS MANAGEMENT

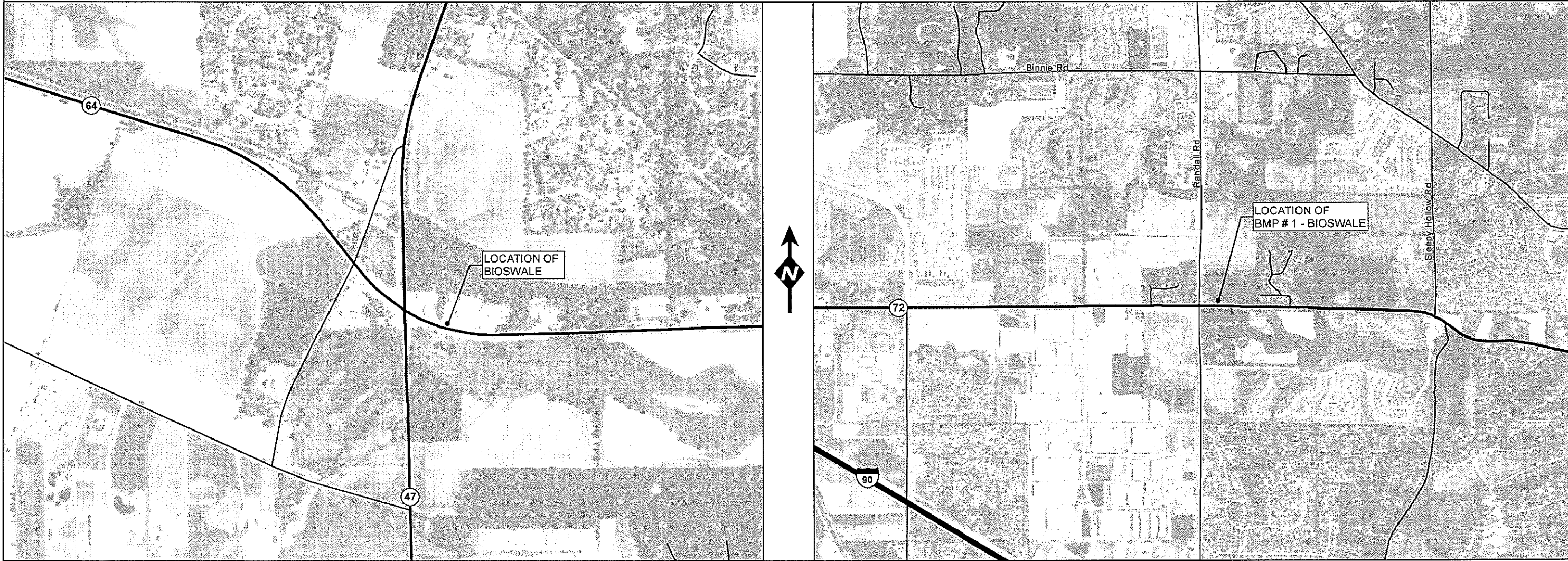
LOCATION MAP

	ROUTE	SECTION	COUNTY	TOTAL SHEETS	SHEET NUMBER
	VARIOUS	2013-080 I	VARIOUS	16	10

CONTRACT 60X68

IL 64 AT IL 47 - KANE COUNTY

IL 72 AT RANDALL RD - KANE COUNTY



ILLINOIS DEPARTMENT OF TRANSPORTATION  
WETLAND AREAS MANAGEMENT

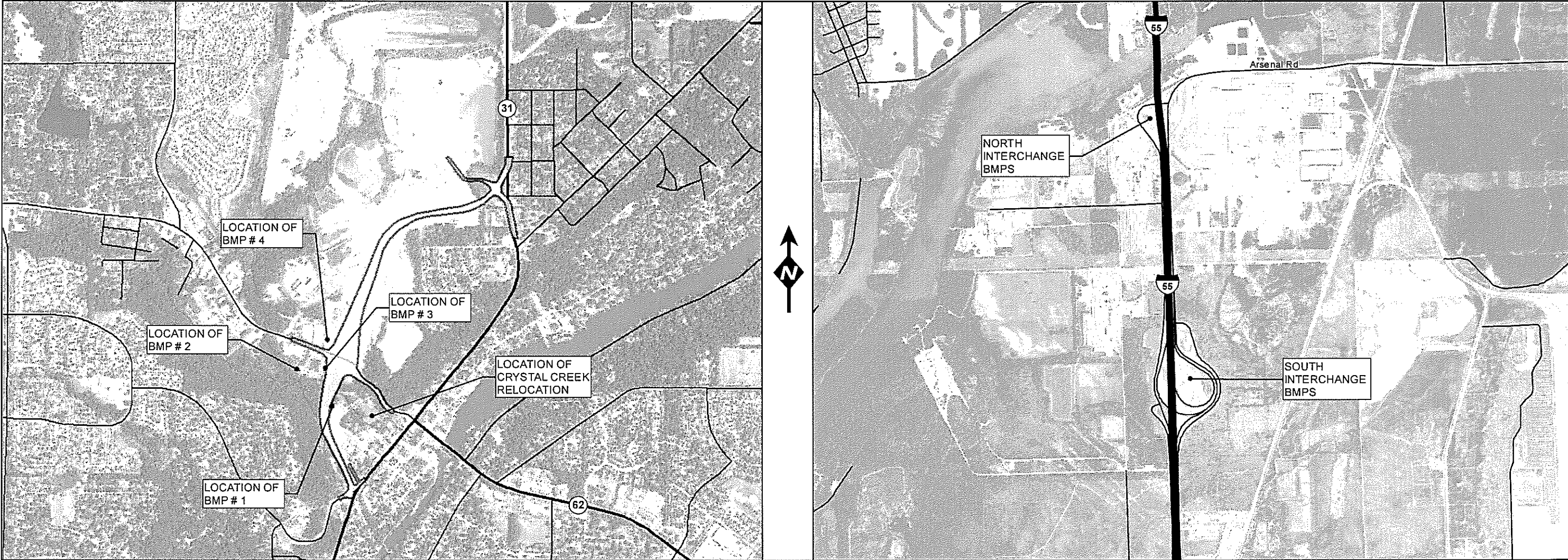
LOCATION MAP

	ROUTE	SECTION	COUNTY	TOTAL SHEETS	SHEET NUMBER
	VARIOUS	2013-080 I	VARIOUS	16	11

CONTRACT 60X68

IL 31 BYPASS - MCHENRY COUNTY

I-55 AT ARSENAL RD - WILL COUNTY



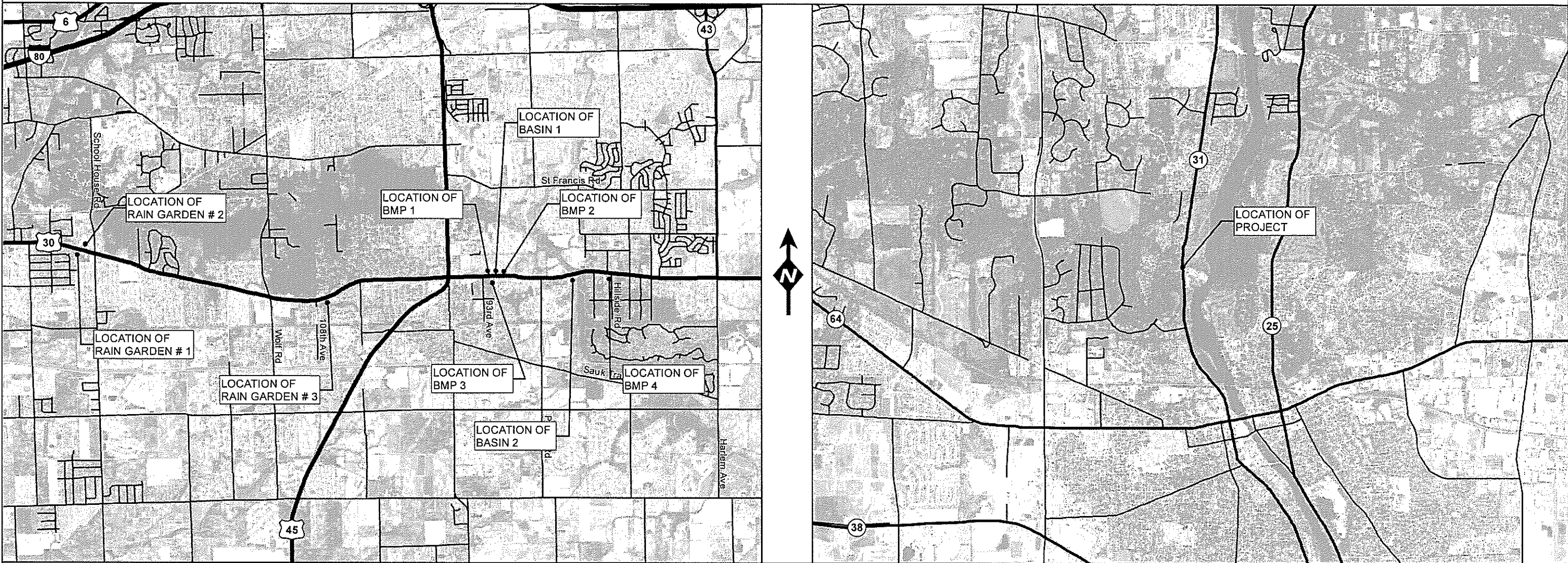
ILLINOIS DEPARTMENT OF TRANSPORTATION  
 WETLAND AREAS MANAGEMENT  
 LOCATION MAP

ROUTE	SECTION	COUNTY	TOTAL SHEETS	SHEET NUMBER
VARIOUS	2013-080 I	VARIOUS	16	12

CONTRACT 60X68

US 30 FROM WILLIAMS ST TO IL 43 - WILL COUNTY

IL 31 AT FERSON CREEK - KANE COUNTY

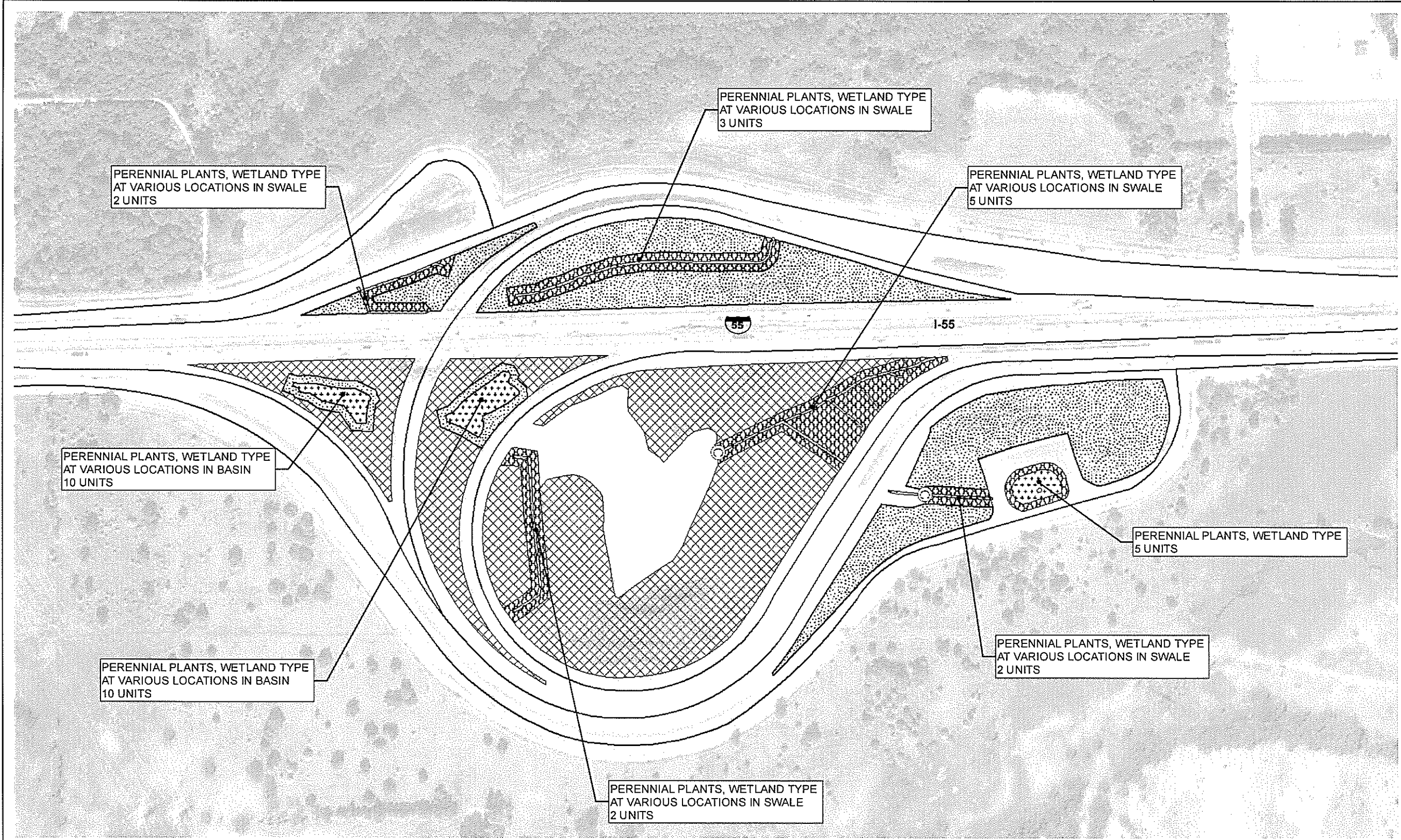


ILLINOIS DEPARTMENT OF TRANSPORTATION  
WETLAND AREAS MANAGEMENT

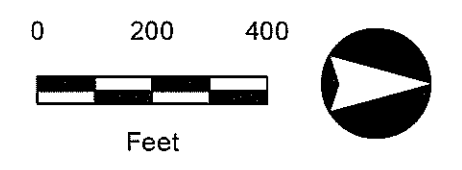
LOCATION MAP

	<b>ROUTE</b> VARIOUS	<b>SECTION</b> 2013-080 I	<b>COUNTY</b> VARIOUS	<b>TOTAL SHEETS</b> 16	<b>SHEET NUMBER</b> 13
--	-------------------------	------------------------------	--------------------------	---------------------------	---------------------------

**CONTRACT 60X68**



**SITE LOCATION**  
SOUTH INTERCHANGE  
I-55 AT ARSENAL RD  
  
TEAM SECTION:  
137 - I-55



**LEGEND**

	CHECK DAM (STONE RIPRAP, CLA4)
	INTERSEED CL 4 SPL
	INTERSEED CL 4A MOD
	INTERSEED CL 4B MOD
	PERENNIAL PLANTS, WETLAND TYPE

**SUMMARY OF QUANTITIES FOR THIS SHEET**

PAY ITEM #	DESCRIPTION	UNIT	QUANTITY
K0013030	PERENNIAL PLANTS, WETLAND TYPE, 2 X 4 PLUG	UNIT	39
X2500500	INTERSEEDING, CLASS 4 (SPECIAL)	ACRE	13.3
X2503315	INTERSEEDING, CLASS 4A (MODIFIED)	ACRE	18.8
X2503318	INTERSEEDING, CLASS 4B (MODIFIED)	ACRE	4.5
X2810207	STONE RIPRAP, CLASS A4	TON	20

ILLINOIS DEPARTMENT OF TRANSPORTATION  
WETLAND AREAS MANAGEMENT  
  
SEEDING/PLANTING PLAN

ROUTE  
VARIOUS

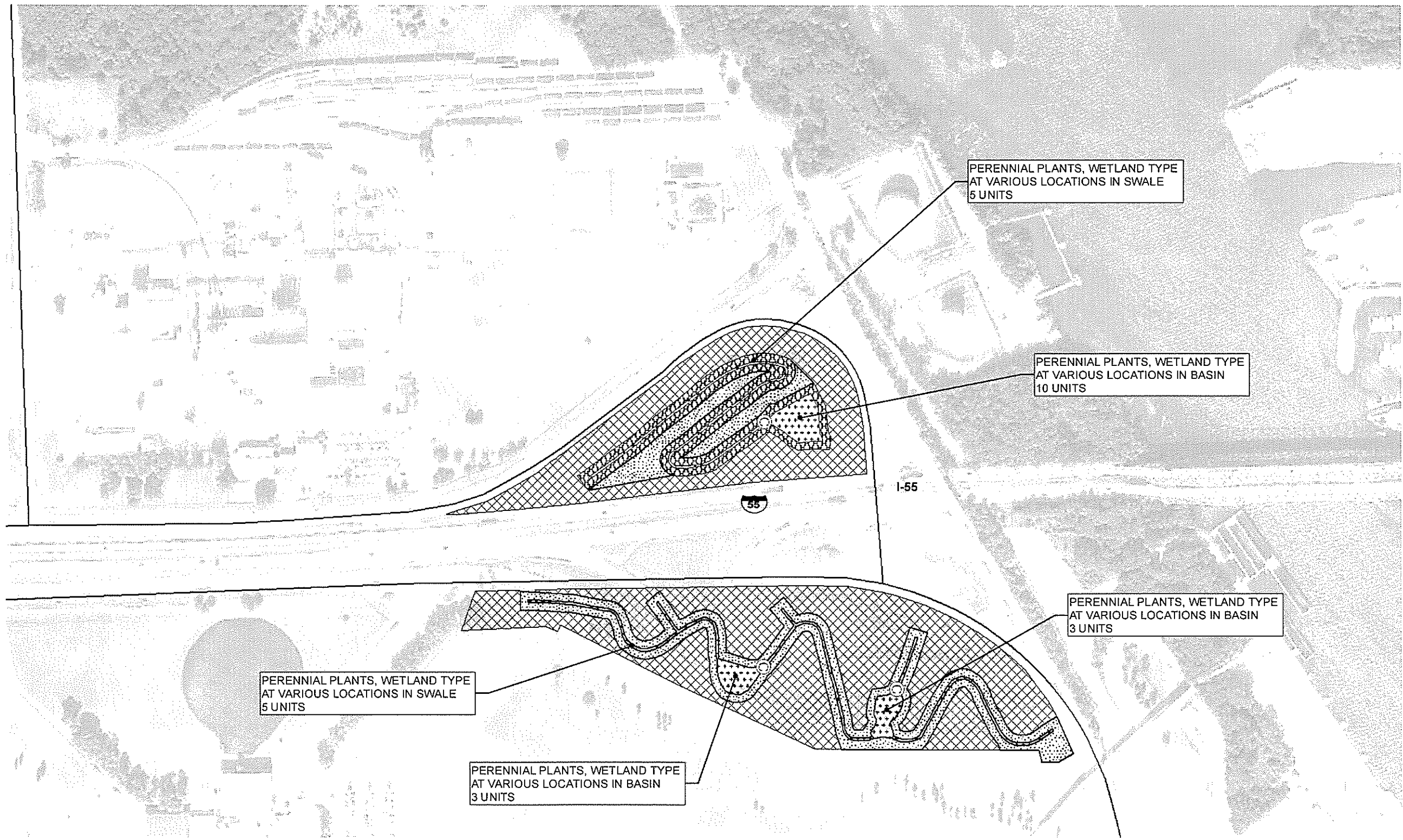
SECTION  
2013-080 1

COUNTY  
VARIOUS

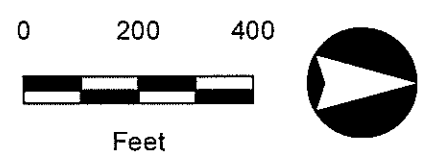
TOTAL  
SHEETS  
16

SHEET  
NUMBER  
14

CONTRACT 60X68



SITE LOCATION  
NORTH INTERCHANGE  
I-55 AT ARSENAL RD  
  
TEAM SECTION:  
137 - I-55



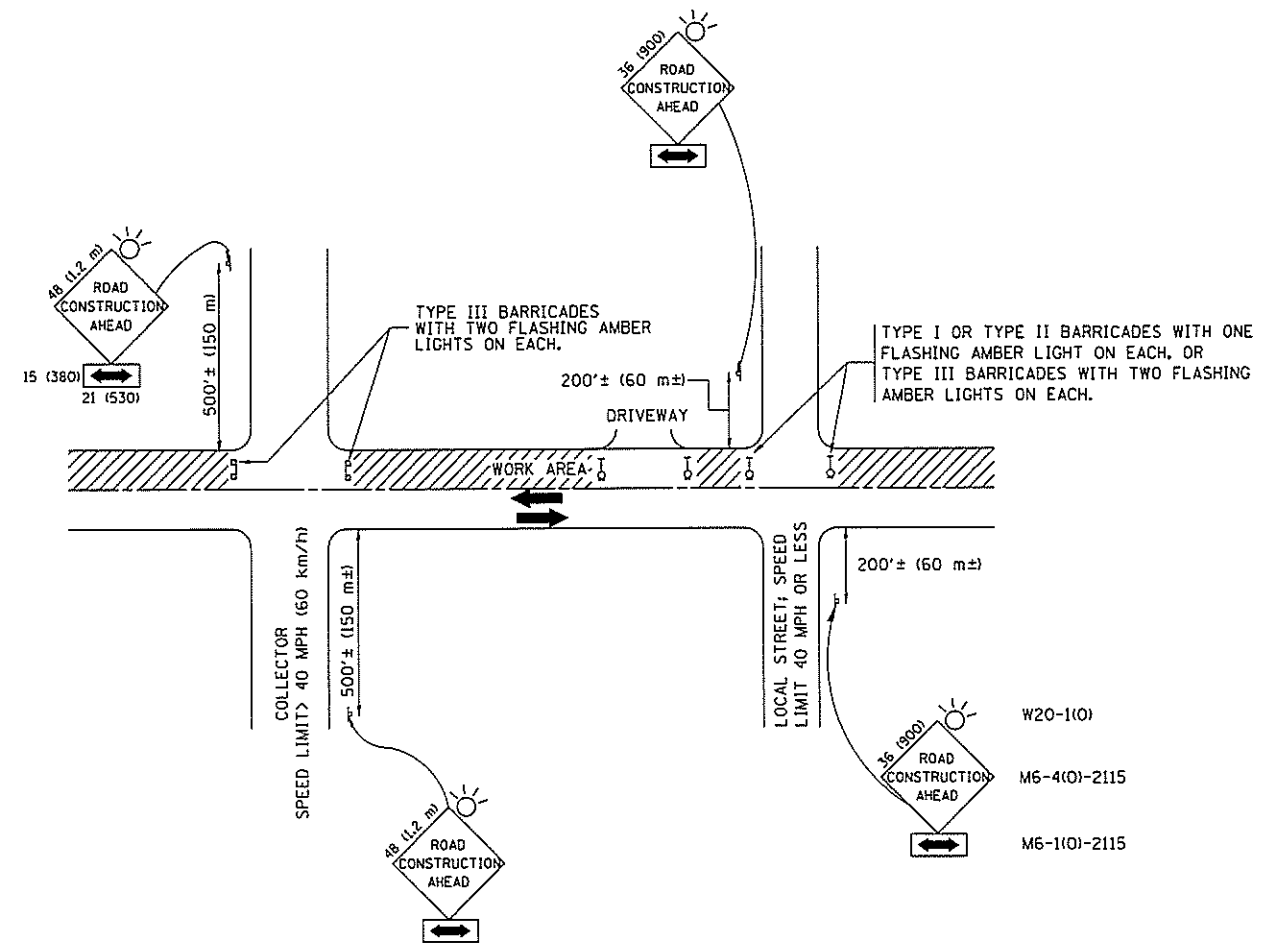
**LEGEND**

- ⊙ CHECK DAM (STONE RIPRAP, CL A4)
- ▨ INTERSEED CL 4 SPL
- ▩ INTERSEED CL 4A MOD
- ▧ INTERSEED CL 4B MOD
- ▤ PERENNIAL PLANTS, WETLAND TYPE

**SUMMARY OF QUANTITIES FOR THIS SHEET**

PAY ITEM #	DESCRIPTION	UNIT	QUANTITY
K0013030	PERENNIAL PLANTS, WETLAND TYPE, 2 X 4 PLUG	UNIT	26
X2500500	INTERSEEDING, CLASS 4 (SPECIAL)	ACRE	5
X2503315	INTERSEEDING, CLASS 4A (MODIFIED)	ACRE	14.7
X2503318	INTERSEEDING, CLASS 4B (MODIFIED)	ACRE	2.3
X2810207	STONE RIPRAP, CLASS A4	TON	50

ILLINOIS DEPARTMENT OF TRANSPORTATION  
WETLAND AREAS MANAGEMENT  
SEEDING/PLANTING PLAN



TRAFFIC CONTROL AND PROTECTION FOR SIDE ROADS, INTERSECTIONS, AND DRIVEWAYS

NOTES:

A. FOR NO LANE RESTRICTION ON THE SIDE ROAD OR DRIVEWAYS

1. SIDE ROAD WITH A SPEED LIMIT OF 40 MPH (60 km/h) OR LESS AS SHOWN ON THE DRAWING AND AS DIRECTED BY THE ENGINEER:
  - a) ONE ROAD CONSTRUCTION AHEAD SIGN 36 x 36 (900x900) WITH A FLASHER AND FLAG MOUNTED ON IT APPROXIMATELY 200' (60 m) IN ADVANCE OF THE MAIN ROUTE.
  - b) THE CLOSED PORTION OF THE MAIN ROUTE SHALL BE PROTECTED BY BLOCKING WITH TYPE I, TYPE II OR TYPE III BARRICADES, 1/3 OF THE CROSS SECTION OF THE CLOSED PORTION.
2. SIDE ROAD WITH A SPEED LIMIT GREATER THAN 40 MPH (60 km/h) AS SHOWN ON THE DRAWING AND AS DIRECTED BY THE ENGINEER:
  - a) ONE ROAD CONSTRUCTION AHEAD SIGN 48 x 48 (1.2 m x 1.2 m) WITH A FLASHER MOUNTED ON IT APPROXIMATELY 500' (150 m) IN ADVANCE OF THE MAIN ROUTE.
  - b) THE CLOSED PORTION OF THE MAIN ROUTE SHALL BE PROTECTED BY BLOCKING WITH TYPE III BARRICADES, 1/2 OF THE CROSS SECTION OF THE CLOSED PORTION.
3. WHEN THE SIDE ROAD LIES BETWEEN THE BEGINNING OF THE MAINLINE SIGNING AND THE WORK ZONE, A SINGLE HEADED ARROW (M6-1) SHALL BE USED IN LIEU OF THE DOUBLE HEADED ARROW (M6-4).

B. FOR A LANE CLOSURE ON A SIDE ROAD OR DRIVEWAY:

- USE APPLICABLE PORTIONS OF THE TYPICAL APPLICATION OF TRAFFIC CONTROL DEVICES (STD. 701501, STD. 701606 OR THE APPROPRIATE STANDARD). THE SPACING OF SIGNS AND BARRICADES SHALL BE ADJUSTED FOR FIELD CONDITIONS AS DIRECTED BY THE ENGINEER. THE DIRECTIONAL ARROW SHALL BE COVERED OR REMOVED WHEN NO LONGER CONSISTENT WITH THE SIDE ROAD LANE CLOSURE.
- C. ADVANCE WARNING SIGNS ARE TO BE OMITTED ON DRIVEWAY UNLESS OTHERWISE NOTED.
  - D. THE TRAFFIC CONTROL AND PROTECTION FOR SIDE ROADS, INTERSECTIONS, AND DRIVEWAYS SHALL BE INCIDENTAL TO THE COST OF SPECIFIED TRAFFIC CONTROL STANDARDS OR ITEMS.

All dimensions are in millimeters (inches) unless otherwise shown.

FILE NAME = W:\dststd\22x34\1c18.dgn	USER NAME = geglensbt	DESIGNED - LHA	REVISED - J. OBERLE 10-18-95
		DRAWN -	REVISED - A. HOUSEH 03-06-96
	PLOT SCALE = 50.000 / IN.	CHECKED -	REVISED - A. HOUSEH 10-15-96
	PLOT DATE = 1/4/2000	DATE - 06-89	REVISED - T. RAMMACHER 01-06-00

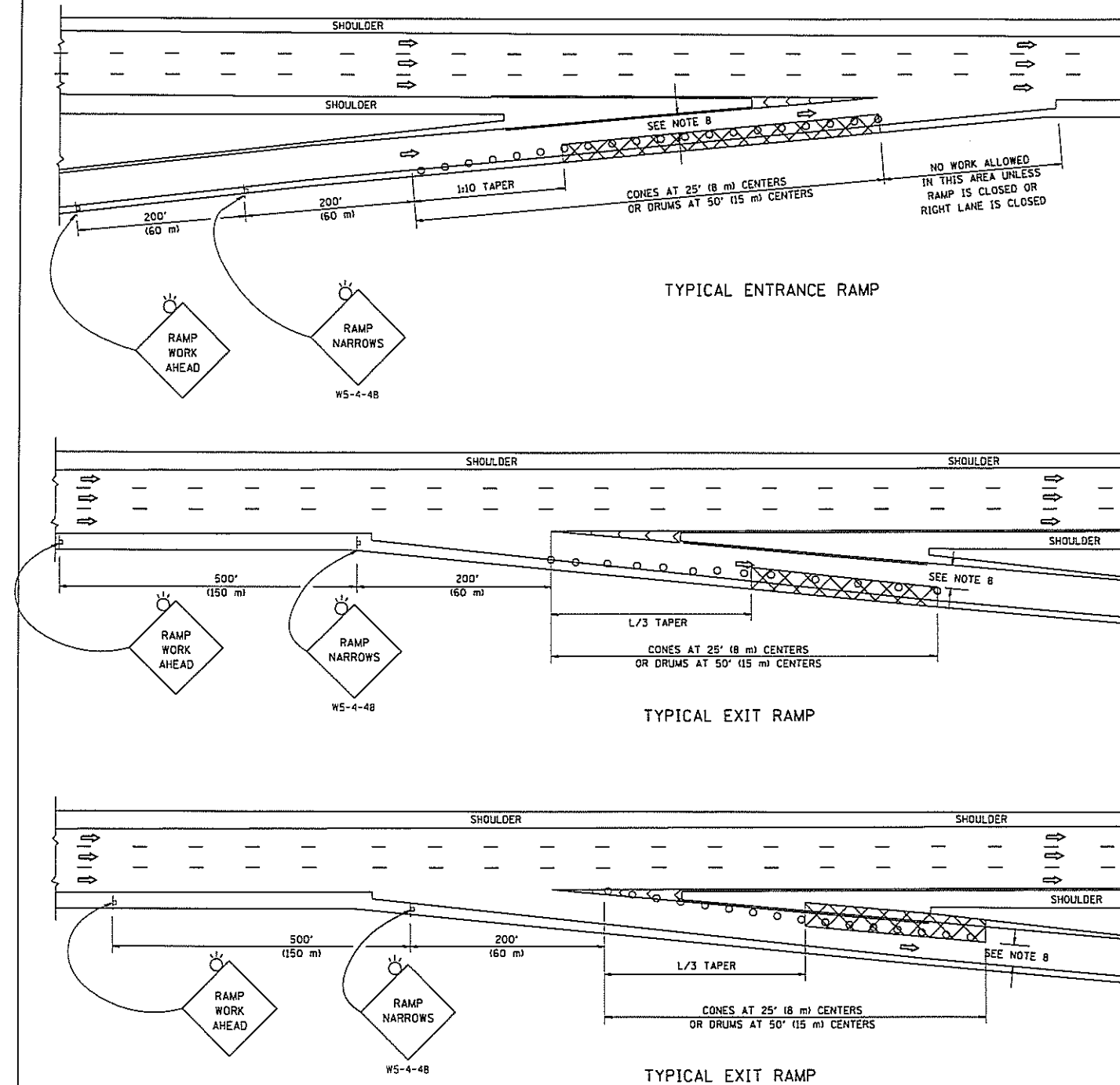
STATE OF ILLINOIS  
DEPARTMENT OF TRANSPORTATION

TRAFFIC CONTROL AND PROTECTION FOR  
SIDE ROADS, INTERSECTIONS, AND DRIVEWAYS

SCALE: NONE SHEET NO. 1 OF 1 SHEETS STA. TO STA.

F.A. RTE.	SECTION	COUNTY	TOTAL SHEETS	SHEET NO.
VAL	2013-080 I	VAL	16	15
TC-10			CONTRACT NO. 60X68	
FED. ROAD DIST. NO. 1 (ILLINOIS) FED. AID PROJECT				

PARTIAL RAMP CLOSURE DETAILS



TYPICAL ENTRANCE RAMP

TYPICAL EXIT RAMP

TYPICAL EXIT RAMP

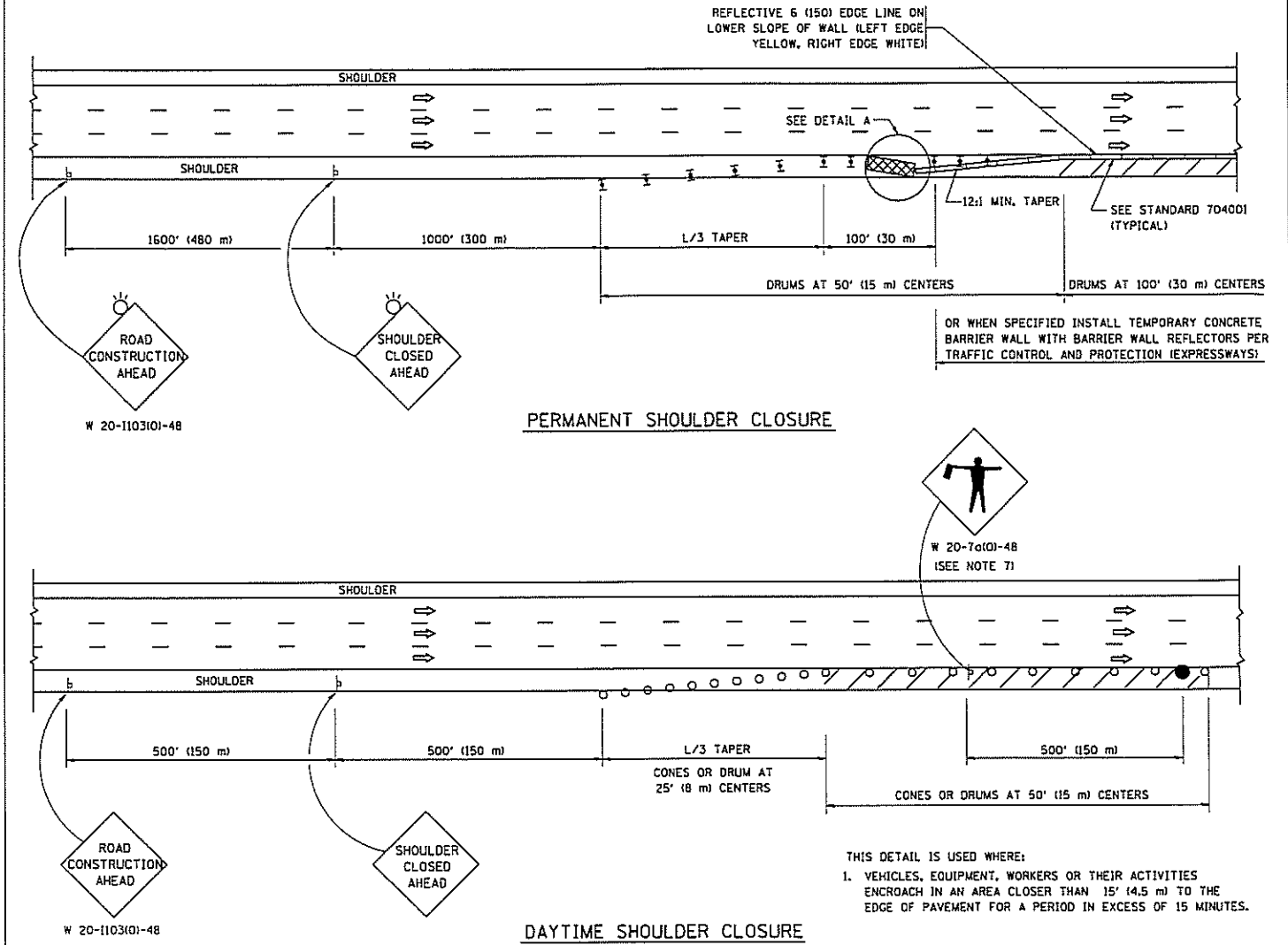
SYMBOLS

- ACTIVE WORK AREA
- SIGN ON PORTABLE OR PERMANENT SUPPORT
- FLAGGER WITH CONTROL SIGN
- TYPE II BARRICADE OR DRUM WITH STEADY BURN MONO-DIRECTIONAL LIGHT
- CONE, DRUM OR BARRICADE
- IMPACT ATTENUATOR OF TYPE AND TEST LEVEL SPECIFIED

GENERAL NOTES

1. THE "L" DISTANCE EQUALS:  
 SPEED LIMIT FORMULAS  
 45 mph (80 km/h) METRIC ENGLISH  
 OR GREATER:  $L=0.65(W/S)$   $L=(W/S)$   
 W = WIDTH OF OFFSET IN FEET (METERS)  
 S = NORMAL POSTED SPEED MPH (KM/H)
2. PLASTIC DRUMS WITH HIGH PERFORMANCE REFLECTIVE SHEETING AND STEADY BURNING LIGHTS ARE REQUIRED FOR ALL NIGHTTIME CLOSURES.
3. ALL SIGNS SHALL BE POST MOUNTED IF THE CLOSURE TIME EXCEEDS FOUR DAYS.
4. FLASHING LIGHTS SHALL BE USED DURING THE HOURS OF DARKNESS AND SHALL BE INSTALLED ABOVE THE FIRST TWO SETS OF SIGNS.

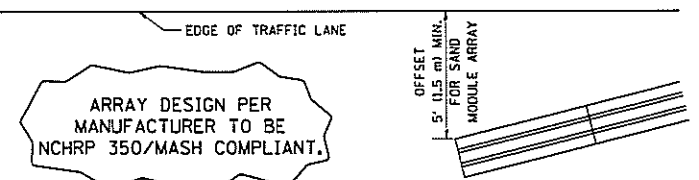
SHOULDER CLOSURE DETAILS



PERMANENT SHOULDER CLOSURE

DAYTIME SHOULDER CLOSURE

THIS DETAIL IS USED WHERE:  
 1. VEHICLES, EQUIPMENT, WORKERS OR THEIR ACTIVITIES ENCRUCH IN AN AREA CLOSER THAN 15' (4.5 m) TO THE EDGE OF PAVEMENT FOR A PERIOD IN EXCESS OF 15 MINUTES.



DETAIL "A"  
 IMPACT ATTENUATOR, TEMPORARY  
 (SEE NOTE 5)

5. THE IMPACT ATTENUATOR, TEMPORARY IS NOT REQUIRED WHEN THE TEMPORARY CONCRETE BARRIER WALL IS PROTECTED BY OR IS TIED INTO THE EXISTING GUARDRAIL. IF OFFSET IS LESS THAN 5 FEET USE NARROW USE TYPE DEVICE TO MEET NCHRP350/MASH.
6. AUTHORIZATION FROM THE DISTRICT'S BUREAU OF TRAFFIC IS REQUIRED FOR ALL FREEWAY CLOSURES.
7. THE FLAGGER AND FLAGGER SIGN ARE REQUIRED AT THE ABOVE WORK SITES WHEN:
  - a. FOUR OR MORE WORK VEHICLES ENTER THE TRAFFIC LANES IN A ONE HOUR PERIOD.
  - b. THE WORK ACTIVITY REQUIRES FREQUENT ENCRUCHMENT INTO THE LANE OPEN TO TRAFFIC.
 THE FLAGGER SHALL BE STATIONED APPROXIMATELY 100' (30 m) TO 200' (60 m) IN ADVANCE OF THE WORKERS.
8. 12" MIN. WIDTH TANGENT SECTION  
 16" MIN. WIDTH CURVE SECTION.

ALL DIMENSIONS ARE IN INCHES (MILLIMETERS) UNLESS OTHERWISE SHOWN.

FILE NAME =	USER NAME = foatemj	DESIGNED -	REVISED - J.A.F. 12-06
cr:\pwork\work\foatemj\ad8188315\17.dgn		DRAWN - D.W.S.	REVISED - S.P.B. 01-07
	PLOT SCALE = 58.0888' / 1"	CHECKED -	REVISED - S.P.B. 12-09
	PLOT DATE = 7/1/2013	DATE - 11-96	REVISED - M.D. 06-13

STATE OF ILLINOIS  
 DEPARTMENT OF TRANSPORTATION

TRAFFIC CONTROL DETAILS FOR FREEWAY SHOULDER CLOSURES AND PARTIAL RAMP CLOSURES		F.A. R.T.E.	SECTION	COUNTY	TOTAL SHEETS	SHEET NO.
SCALE: NONE		VAL 2013-080 F	TC-17	VAL	16	16
SHEET NO. 1 OF 1 SHEETS		CONTRACT NO. 60468		FED. ROAD DIST. NO. 1 ILLINOIS FED. AID PROJECT		