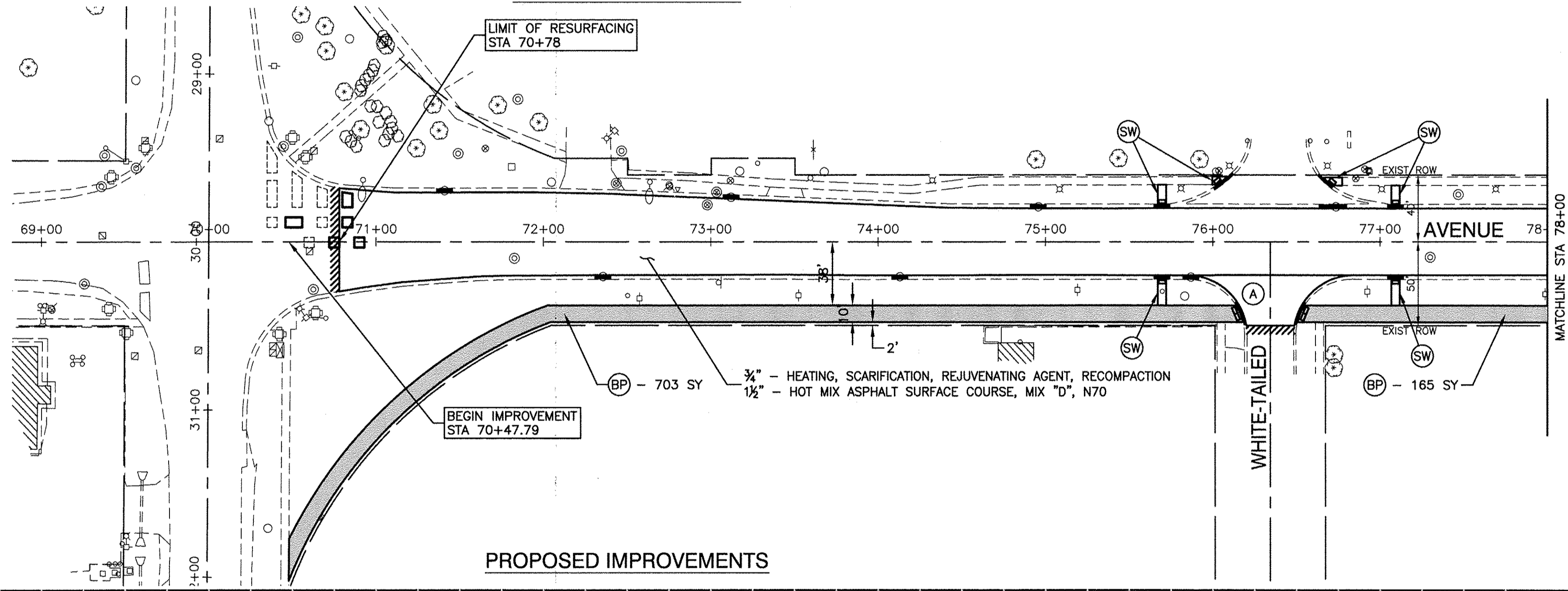
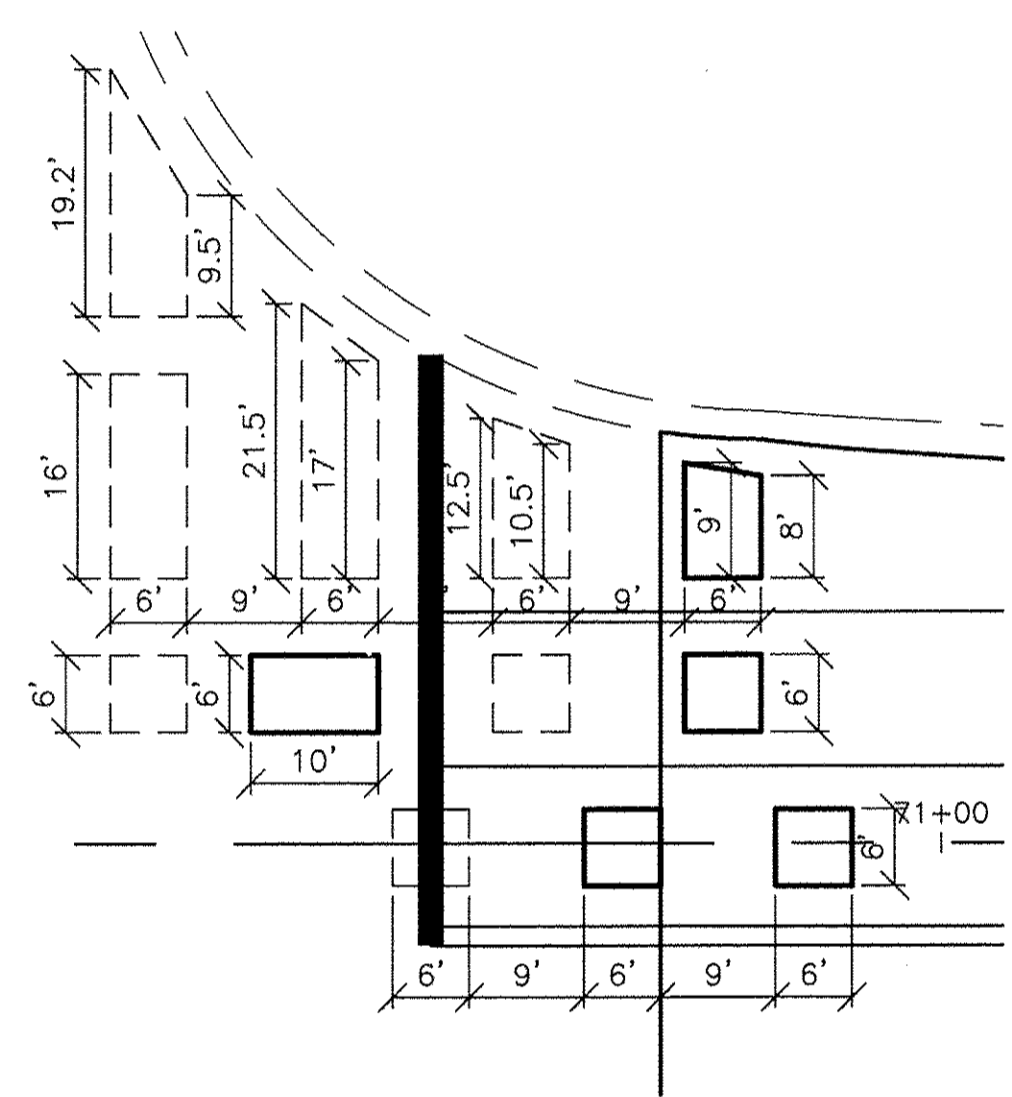


NOTE
LOCATIONS OF ANY REPLACEMENT TREES SHALL BE DETERMINED BY THE RESIDENT ENGINEER.

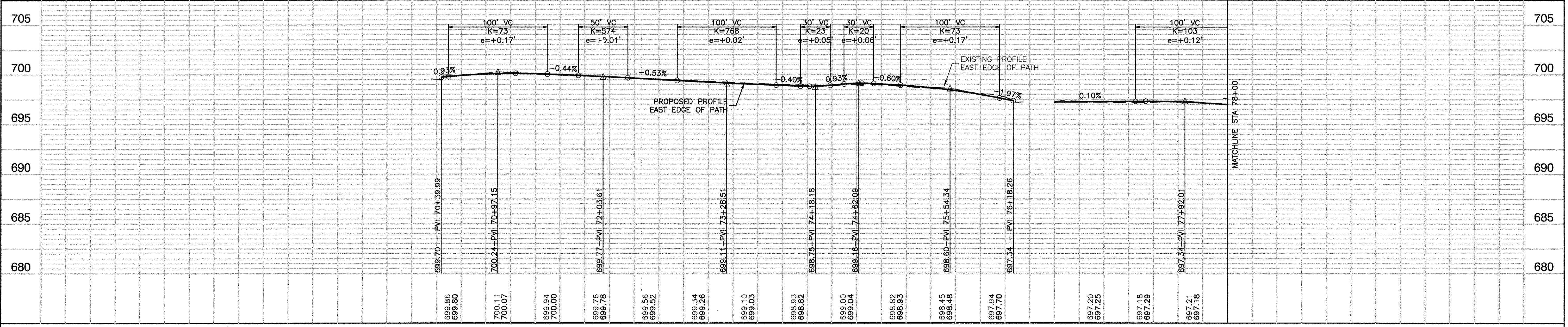
| | |
|---------|--|
| DATE | |
| BY | |
| PLAN | |
| NO. | |
| DATE | |
| BY | |
| PROFILE | |
| NO. | |

| | |
|---------|--|
| DATE | |
| BY | |
| PROFILE | |
| NO. | |



LEGEND

- CONCRETE SIDEWALK REMOVAL
- HOT-MIX ASPHALT SURFACE REMOVAL, SPECIAL
- DRIVEWAY PAVEMENT REMOVAL
- HOT-MIX ASPHALT SURFACE REMOVAL, 2"
- HOT-MIX ASPHALT SURFACE REMOVAL, BUTT JOINT
- CURB REMOVAL
- COMBINATION CONCRETE CURB AND GUTTER REPLACEMENT
- A** STRUCTURE TO BE ADJUSTED
- R** STRUCTURE TO BE RECONSTRUCTED
- EXISTING TREE REMOVAL
- HOT-MIX ASPHALT MULTI-USE PATH
-AGGREGATE BASE COURSE, TYPE B, 6"
-HOT-MIX ASPHALT SURFACE COURSE, IL-9.5, MIX "D", N50, 2"
- HOT-MIX ASPHALT SURFACE COURSE, IL-9.5, MIX "D", N70, 1 1/2"
LEVELING BINDER (MACHINE METHOD), N70, 3/4"
- P.C.C. SIDEWALK, 5"
- DETECTABLE WARNINGS



| | | | | | | | | | | | | |
|--|----------------------|----------------|-----------|---|---|----------------|------|--|---------|--------------------|--------------|-----------|
| FILE NAME = 13308-PLPR-01 - IDOT PLR01 | USER NAME = | DESIGNED - JPH | REVISED - | STATE OF ILLINOIS DEPARTMENT OF TRANSPORTATION | OAK PARK AVENUE ROADWAY IMPROVEMENTS PLAN & PROFILE | | | F.A.U. RITE | SECTION | COUNTY | TOTAL SHEETS | SHEET NO. |
| | CHECKED - PKB | REVISOR - | | | 2774 | 13-00115-00-RS | COOK | 35 | 5 | | | |
| | PLOT SCALE = | DRAWN - RG | REVISED - | | SCALE: H 1"=50' V 1"=5' | | | SHEET NO. 5 OF 35 SHEETS | | CONTRACT NO. 61A01 | | |
| | PLOT DATE = 12-02-13 | CHECKED - AG | REVISED - | | STA. TO STA. | | | FED. ROAD DIST. NO. 1 ILLINOIS FED. AID PROJECT CMM-4003 (249) | | | | |