

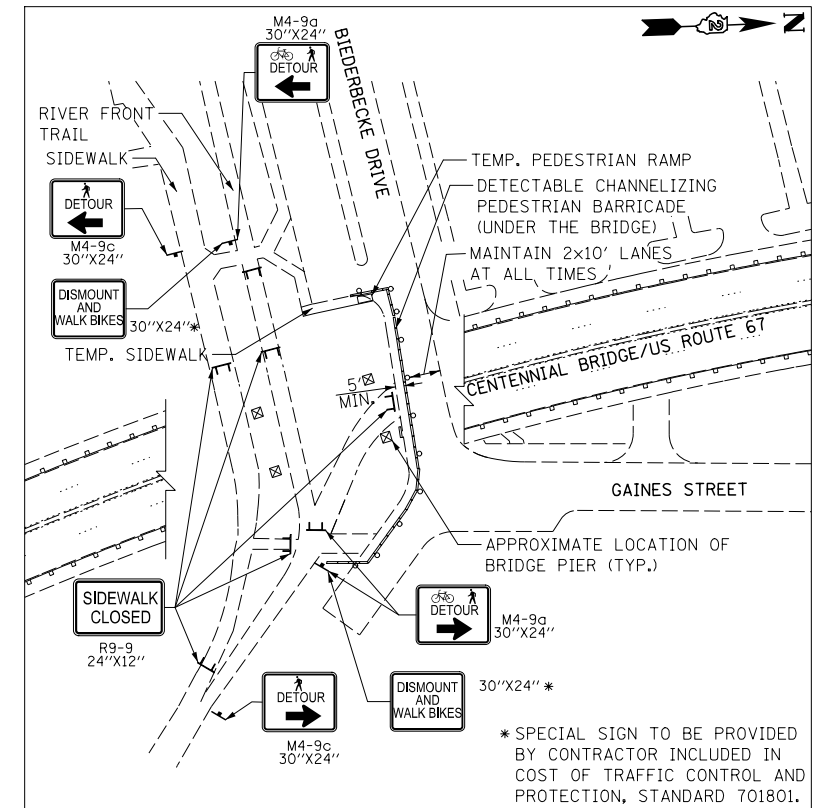
**GREAT RIVER TRAIL DETOUR DETAIL**

SCALE: 1" = 50'

\*\* TEMPORARY PAVEMENT CONSISTS OF:

- 2" INCIDENTAL HOT-MIX ASPHALT SURFACING
- 6" AGGREGATE BASE COURSE, TYPE B

PRICE OF TEMPORARY PAVEMENT AND TEMPORARY PAVEMENT REMOVAL SHALL BE INCLUDED IN THE COST OF TRAFFIC CONTROL AND PROTECTION, STANDARD 701801.



**RIVER FRONT TRAIL AND SIDEWALK DETOUR DETAIL**

SCALE: 1" = 50'

PRICE OF TEMPORARY SIDEWALK, TEMPORARY PEDESTRIAN RAMP, AND TEMPORARY SIDEWALK REMOVAL SHALL BE INCLUDED IN THE COST OF TRAFFIC CONTROL AND PROTECTION, STANDARD 701801.

FILE NAME : I:\Projects\4015550\4015550\_0001\90\_CAD\_Models\_and\_Sheets\04\_Civil\Sheets\0264H28-Detour\_Ramp\_01B.dgn

USER NAME = thompsrd	DESIGNED - RDT/GC	REVISED -
	DRAWN - RDT	REVISED -
PLOT SCALE = 200.0000' / in.	CHECKED - JAC	REVISED -
PLOT DATE = 1/21/2014	DATE - 11-08-2013	REVISED -

**STATE OF ILLINOIS  
DEPARTMENT OF TRANSPORTATION**

**US 67 OVER MISSISSIPI RIVER STRUCTURE NO. 081-9905  
GREAT RIVER TRAIL AND RIVER FRONT TRAIL DETOUR PLAN**

SCALE: AS SHOWN SHEET NO. 8 OF 47 SHEETS STA. TO STA.

F.A.P. RTE.	SECTION	COUNTY	TOTAL SHEETS	SHEET NO.
308	(3BRIM)	ROCK ISLAND	47	8
C-92-090-12			CONTRACT NO. 64H28	
ILLINOIS FED. AID PROJECT HSIP-XXXX (XXX)				