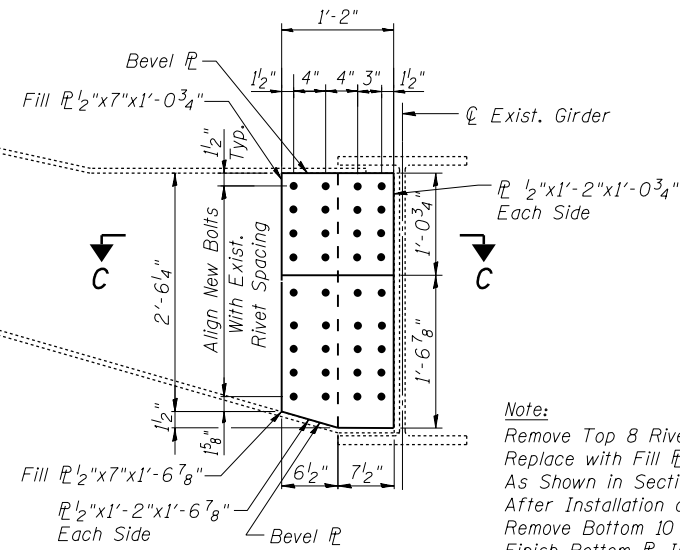


*See Sheet 21 for Section B-B

DETAIL 106

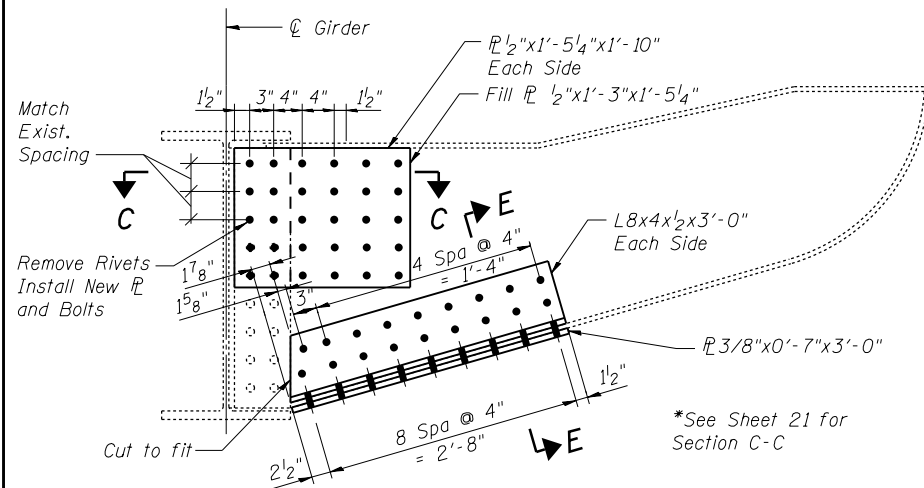
Span 17, West Side, 4th Bracket from Bent 10 at Pin and Link (Looking North)
Span 17, West Side, 3rd Bracket from Bent 10 (Looking North)



Note:
Remove Top 8 Rivets in Existing Connection
Replace with Fill Pl., New Pl. and Bolts
As Shown in Section C-C.
After Installation of Top Pl.,
Remove Bottom 10 Bolts and
Finish Bottom Pl. Installation

DETAIL 108

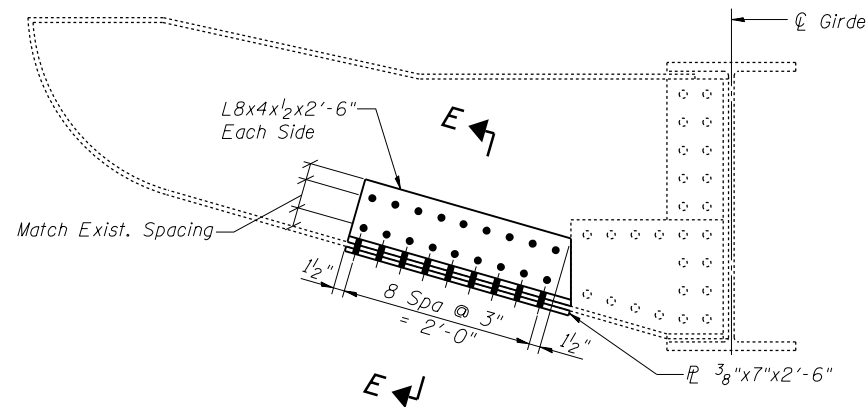
Span 19, West Side, 2nd Bracket from South of Bent 13 (Looking North)



*See Sheet 21 for Section C-C

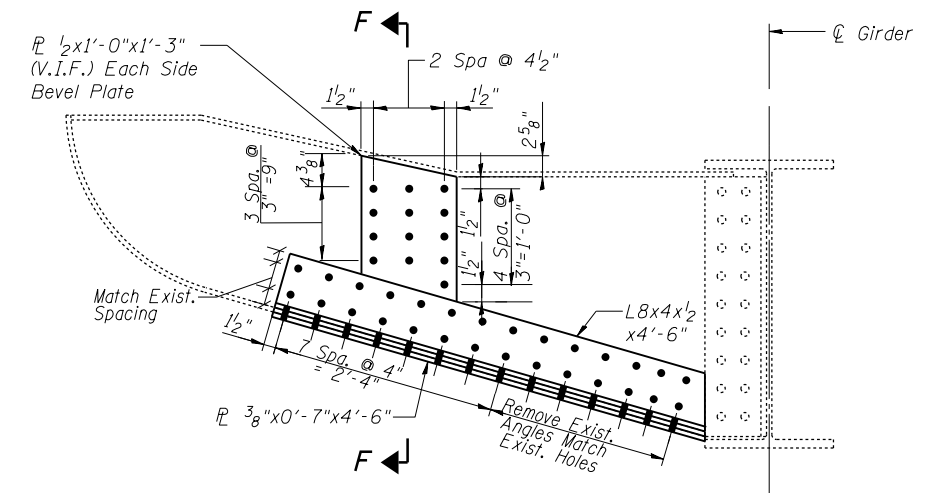
DETAIL 107

Span 19, West Side, First Bracket from South of Bent 13 (Looking South)



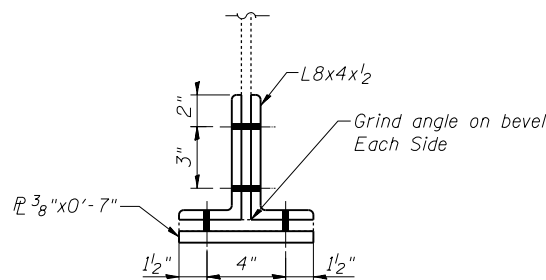
DETAIL 109

Span 23, West Side at Bent 16 (Looking North)



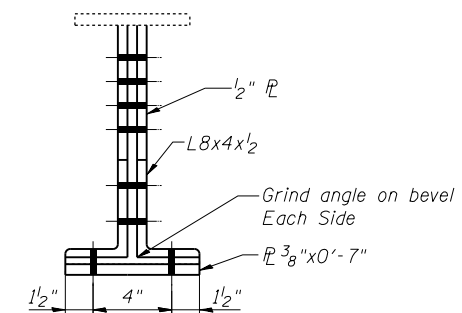
DETAIL 140

Span 14, West Side, 2nd Bracket from Pier 6 (Looking South)



SECTION E-E

Note:
Use 7/8" ϕ H.S. Bolts. Ream existing holes to 15/16" ϕ (unless otherwise noted).
Verify bracket dimensions in field.



SECTION F-F

Note:
Use 7/8" ϕ H.S. Bolts. Ream existing holes to 15/16" ϕ (unless otherwise noted).
Verify bracket dimensions in field.

Legend:
V.I.F. - Verify in Field

Notes:
Section C-C is on Sheet 26.
Verify bracket dimensions in field.
Section B-B is on Sheet 26.

I:\Projects\4015550\4015550_0001\90_CAD_Models_and_Sheets\04_CJ_Bridge\SDI\081905-64H28-022-Bracket.dgn