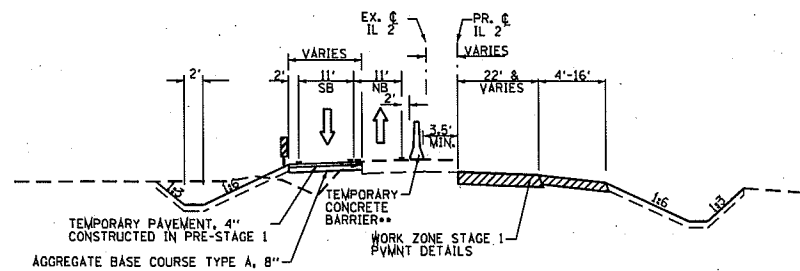
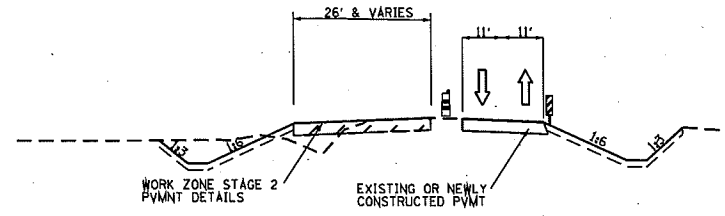


STAGE 1 TYPICALS



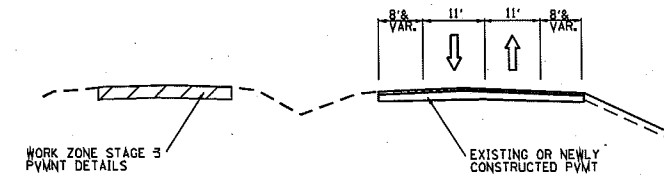
TYPICAL SECTION
EXISTING IL ROUTE 2 (LOOKING NORTH)
STA. 960+03.82 TO STA. 974+99.14*
* EXISTING IL ROUTE 2 STATIONING
** STA. 970+82.57 TO STA. 974+81.58

STAGE 2 TYPICALS

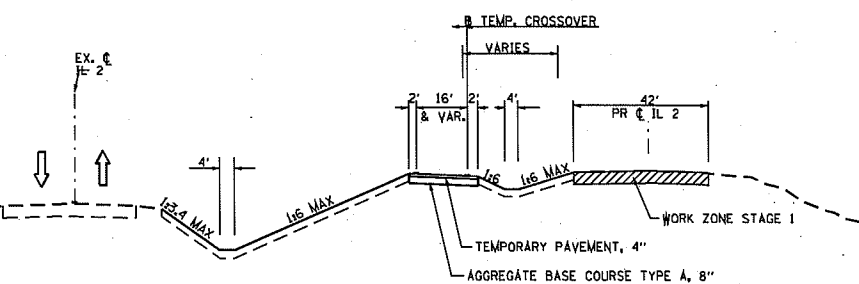


TYPICAL SECTION
IL ROUTE 2 (LOOKING NORTH)
STA. 965+23 TO 993+98

STAGE 3 TYPICALS

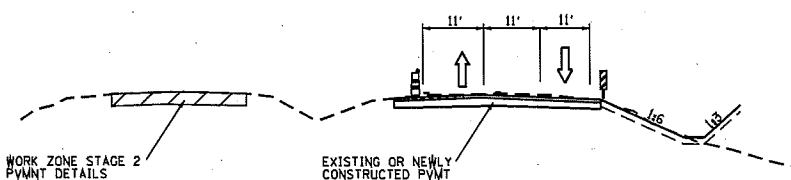


TYPICAL SECTION
IL ROUTE 2 (LOOKING NORTH)
STA. 985+25 TO STA. 990+40

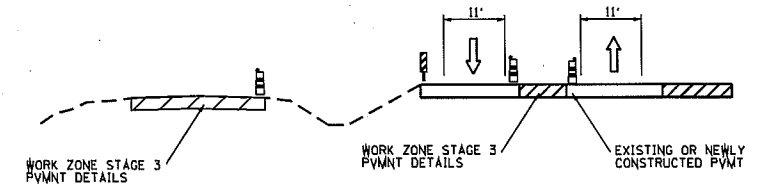


TYPICAL SECTION
IL ROUTE 2 (LOOKING NORTH)
STA. 993+98.21 TO STA. 1002+40.33

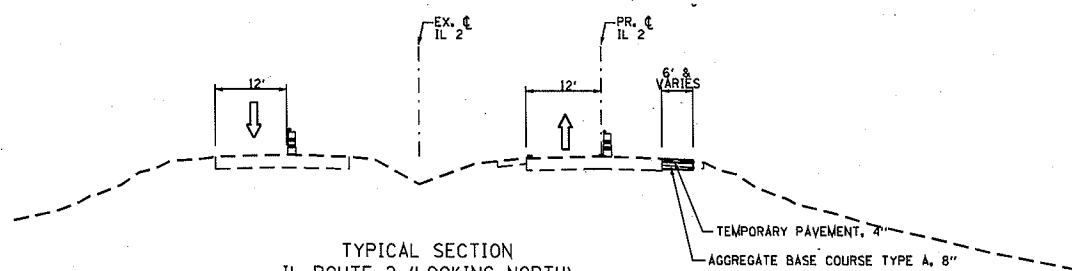
NOTE:
FOR TEMPORARY CROSSOVER ALIGNMENT AND
PROFILE INFORMATION, SEE SHEET NO.



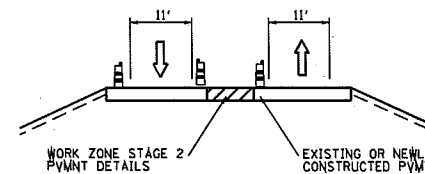
TYPICAL SECTION
IL ROUTE 2 (LOOKING NORTH)
STA. 993+98 TO 1008+00



* STA. 999+00 TO 1018+04 TO BE
DONE AFTER WORK IS COMPLETED
ON LEFT SIDE OF ROADWAY.



TYPICAL SECTION
IL ROUTE 2 (LOOKING NORTH)
STA. 1013+00.00 TO STA. 1019+45.08



TYPICAL SECTION
IL ROUTE 2 (LOOKING NORTH)
STA. 1008+00 TO 1018+04
(TYPICAL APPLIES TO
STAGE 1A ALSO)

LEGEND

- EXISTING OR NEWLY CONSTRUCTED PAVEMENT USED FOR TRAFFIC
- CONSTRUCTION ZONE THIS STAGE
- DIRECTION OF TRAVEL
- TEMPORARY PAVEMENT (SEE TYPICAL SECTION FOR WIDENING)
- BARRICADE, TYPE III
- DRUM WITH STEADY BI-DIRECTIONAL BURNING LIGHT
- ARROW BOARD
- DIRECTION INDICATOR BARRICADE
- VERTICAL PANEL

NOTE: NO DROP-OFF GREATER THAN 12" SHALL BE WITHIN 3' OF TRAFFIC FOR GREATER THAN 48 HOURS. IF THE DROP-OFF IS NOT CORRECTED IN THE TIME-FRAME, SAID AREA SHALL BE PROTECTED WITH BARRIER WALL AND IMPACT ATTENUATORS, APPROVED BY IDOT AT NO ADDITIONAL COST TO IDOT.

FILE NAME =	USER NAME =	DESIGNED - RDT	REVISED -	STATE OF ILLINOIS DEPARTMENT OF TRANSPORTATION	ILLINOIS ROUTE 2 STAGING TYPICALS	F.A.P. RTE.	SECTION	COUNTY	TOTAL SHEETS	SHEET NO.	
ct:\pw\work\pwidot\unbladed\108331858\0264H78-sh1-stagingtypical.dgn	D264H78-sh1-stagingtypical.dgn	DRAWN - RDT	REVISED -			734	77R-1	WINNEBAGO	179	47	
		CHECKED - JAC	REVISED -			CONTRACT NO. 64H70					
		DATE - 10/05/2012	REVISED -			ILLINOIS FED. AID PROJECT					
				SCALE: 1"=50'		SHEET NO. 47 OF 177 SHEETS		STA. 960+00 TO STA. 973+00			