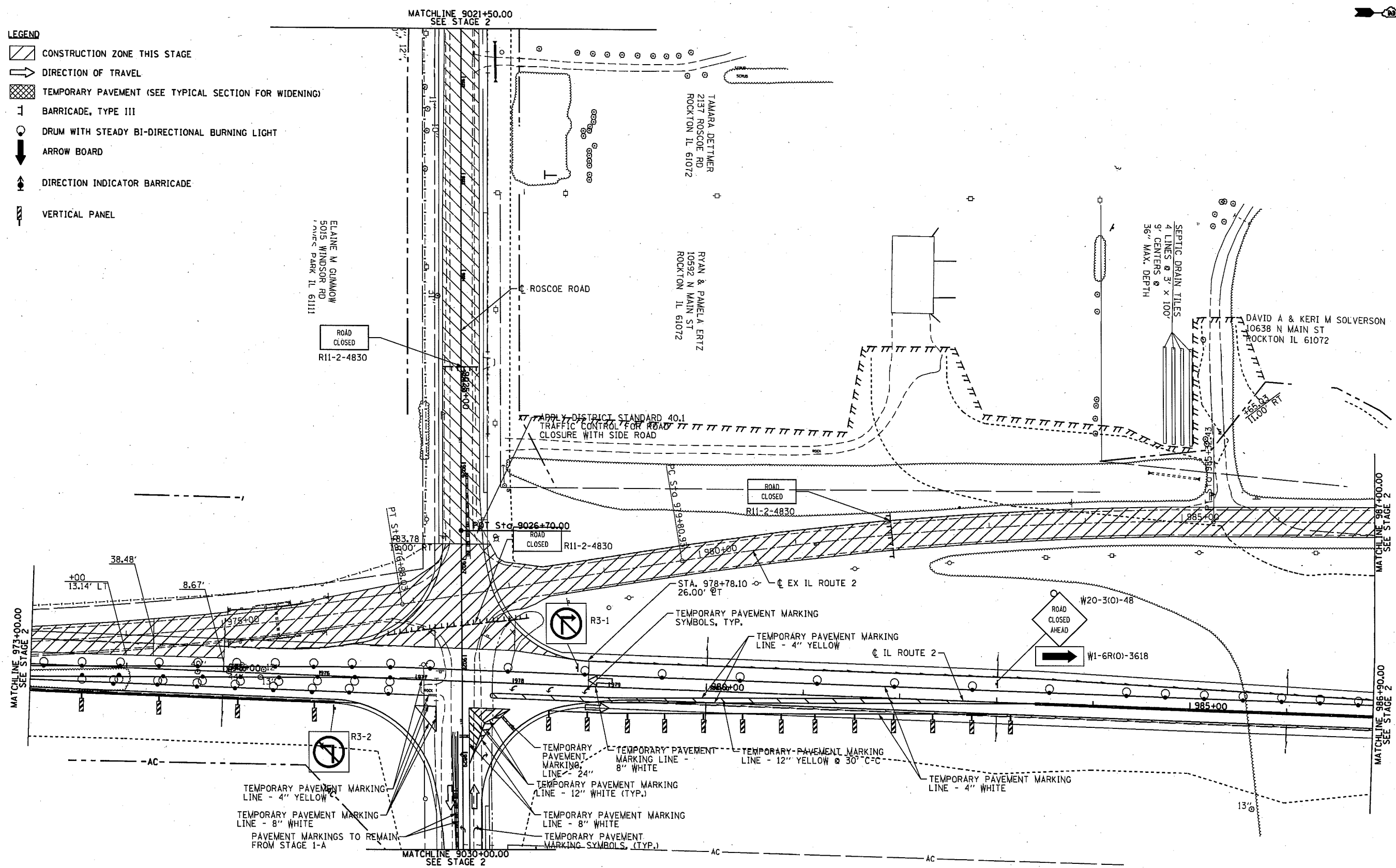




LEGEND

- CONSTRUCTION ZONE THIS STAGE
- DIRECTION OF TRAVEL
- TEMPORARY PAVEMENT (SEE TYPICAL SECTION FOR WIDENING)
- BARRICADE, TYPE III
- DRUM WITH STEADY BI-DIRECTIONAL BURNING LIGHT
- ARROW BOARD
- DIRECTION INDICATOR BARRICADE
- VERTICAL PANEL



NOTE: NO DROP-OFF GREATER THAN 12" SHALL BE WITHIN 3' OF TRAFFIC FOR GREATER THAN 48 HOURS. IF THE DROP-OFF IS NOT CORRECTED IN THE TIME-FRAME, SAID AREA SHALL BE PROTECTED WITH BARRIER WALL AND IMPACT ATTENUATORS, APPROVED BY IDOT AT NO ADDITIONAL COST TO IDOT.

FILE NAME =	USER NAME =	DESIGNED - RDT	REVISED -	STATE OF ILLINOIS DEPARTMENT OF TRANSPORTATION	ILLINOIS ROUTE 2 STAGE 2	F.A.P. RTE.	SECTION	COUNTY	TOTAL SHEETS	SHEET NO.	
cd:\pw\work\p10dot\runbladder\10331856	0264H78-sh1-staging02-02.dgn	DRAWN - RDT	REVISED -			734	77R-1	WINNEBAGO	179	58	
PLOT SCALE =	CHECKED - JAC	REVISED -	REVISED -			SCALE: 1"=50' SHEET NO. 58 OF 179 SHEETS STA. 973+00 TO STA. 986+90					
PLOT DATE =	DATE - 10/05/2012	REVISED -	REVISED -			CONTRACT NO. 64H70 ILLINOIS FED. AID PROJECT					