

F.A.I. RTE.	SECTION	COUNTY	TOTAL SHEETS	SHEET NO.
180	06-2HB-6)BP	BUREAU	9	1
		ILLINOIS	CONTRACT NO. 66D11	

**STATE OF ILLINOIS
DEPARTMENT OF TRANSPORTATION**

DIVISION OF HIGHWAYS

**PROPOSED
HIGHWAY PLANS**

**F.A.I. ROUTE 180 (I-180)
SECTION (06-2HB-6)BP**

**CLEANING AND PAINTING STRUCTURAL STEEL
STRUCTURE NO.'S 006-0059 (WB) AND 006-0060 (EB)
OVER IL 26 AND BUREAU CREEK
1.5 MILES WEST OF HENNEPIN
BUREAU COUNTY**

INDEX OF SHEETS

- 1 COVER SHEET
- 2 GENERAL NOTES
- 3 SUMMARY OF QUANTITIES
- 4 TYPICAL SECTIONS
- 5 TRAFFIC CONTROL AND PROTECTION STANDARD 701402 (SPECIAL)
- 6 TYPICAL PAVEMENT MARKINGS
- 7-9 EXISTING STRUCTURE PLANS

STANDARDS

- 000001-06 STANDARD SYMBOLS, ABBREVIATIONS AND PATTERNS
- 001006 DECIMAL OF AN INCH AND OF A FOOT
- 635011-02 REFLECTOR MARKER AND MOUNTING DETAILS
- 701101-04 OFF-ROAD OPERATIONS MULTILANE, 15' (4.5m) TO 24" (600m) FROM PAVEMENT EDGE
- 701106-02 OFF-ROAD OPERATIONS, MULTILANE, MORE THAN 15' (4.5m) AWAY
- 701201-04 LANE CLOSURE, 2L, 2W, DAY ONLY, FOR SPEEDS ≥ 45 MPH
- 701400-07 APPROACH TO LANE CLOSURE, FREEWAY/EXPRESSWAY
- 701411-08 LANE CLOSURE, MULTILANE AT ENTRANCE OR EXIT RAMP, FOR SPEEDS ≥ 45 MPH
- 701426-06 LANE CLOSURE, MULTILANE INTERMITTENT OR MOVING OPERATION, FOR SPEEDS ≥ 45 MPH
- 701901-03 TRAFFIC CONTROL DEVICES
- 704001-07 TEMPORARY CONCRETE BARRIER

D-93-054-13



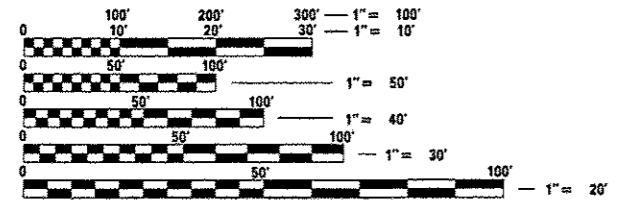
LOCATION OF SECTION INDICATED THUS: —

FUNCTIONAL CLASSIFICATION

**RURAL INTERSTATE
FAI 180 (I-180)
2013 AADT = 2200
P.V. = 82.5%
M.U. = 9.77%
S.U. = 7.73%**

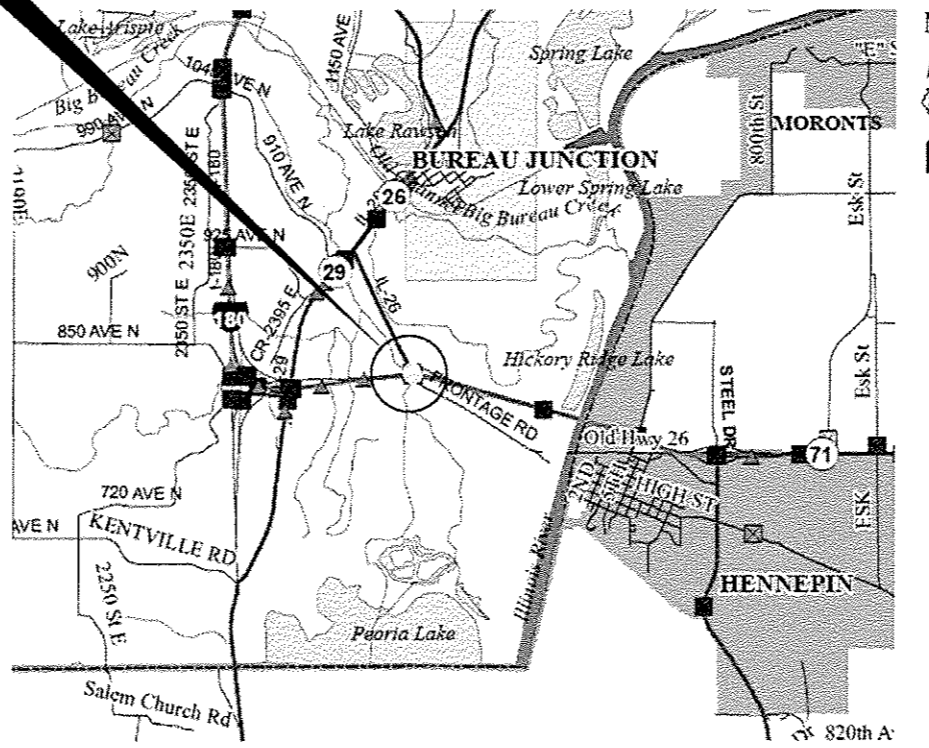
PROJECT LOCATION

**SN 006-0059 (WB) AND SN 006-0060 (EB)
STA. 874 + 53.81 FAI 180 (I-180)**



FULL SIZE PLANS HAVE BEEN PREPARED USING STANDARD ENGINEERING SCALES. REDUCED SIZED PLANS WILL NOT CONFORM TO STANDARD SCALES. IN MAKING MEASUREMENTS ON REDUCED PLANS, THE ABOVE SCALES MAY BE USED.

**J.U.L.I.E.
JOINT UTILITY LOCATION INFORMATION FOR EXCAVATION
1-800-892-0123
OR 811**



**LOCATION MAP NOT TO SCALE
POINT LOCATION**

**DISTRICT 3 NO. (815) 434-6131
PROJECT ENGINEER: JOE KANNEL, P.E.
UNIT CHIEF: RON WOODSHANK
TOWNSHIP: LEEPERTOWN
CONTRACT NO. 66D11**

STATE OF ILLINOIS
DEPARTMENT OF TRANSPORTATION
DIVISION OF HIGHWAYS

SUBMITTED Paul A. Corbett 20 13
DEPUTY DIRECTOR OF HIGHWAYS, REGION ENGINEER

John D. Baranzelli 20 14
ENGINEER OF DESIGN AND ENVIRONMENT

Omer Osman 20 14
DIRECTOR OF HIGHWAYS, CHIEF ENGINEER

**PRINTED BY THE AUTHORITY
OF THE STATE OF ILLINOIS**