

STATE OF ILLINOIS
DEPARTMENT OF TRANSPORTATION
DIVISION OF HIGHWAYS

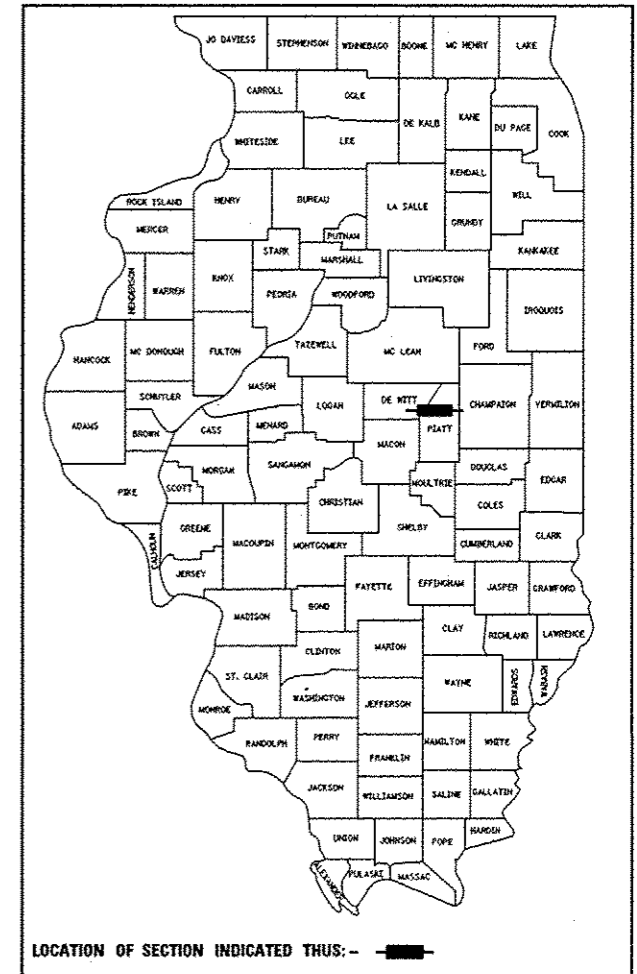
**PROPOSED
HIGHWAY PLANS**

FAP ROUTE 721 (IL 10)
SECTION (115BR) BR
PROJECT ACF-0721 (083)
PIATT COUNTY

C-95-076-04
SUPERSTRUCTURE REPLACEMENT
OVER GOOSE CREEK EAST OF DELAND

F.A.P. RTE.	SECTION	COUNTY	TOTAL SHEETS	SHEET NO.
721	(115BR) BR	PIATT	39	1
		ILLINOIS	CONTRACT NO. 70432	

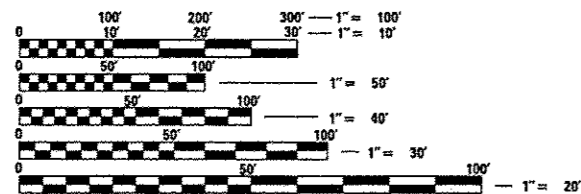
D-95-072-04



FOR INDEX OF SHEETS, SEE SHEET NO. 2
FOR SUMMARY OF QUANTITIES, SEE SHEETS 3 - 6

MINOR ARTERIAL	
ADT =	1900 (2026)
SU =	9.5% MU = 4.9%
PC =	85.6

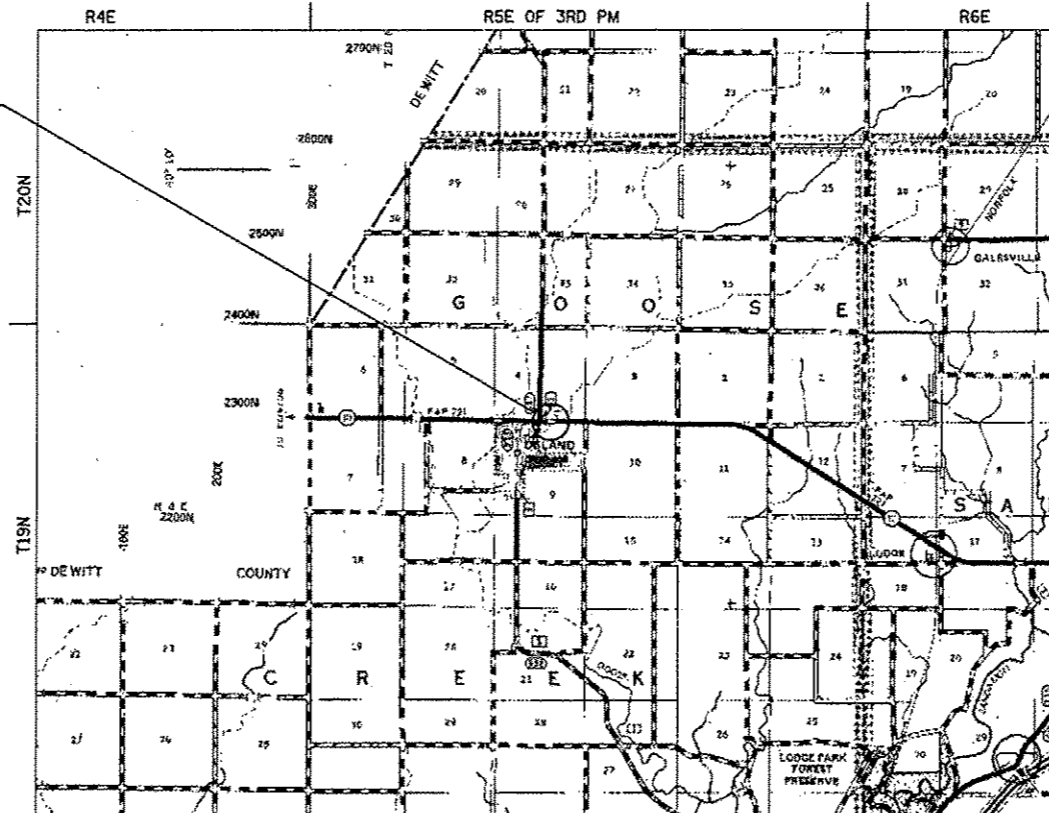
SECTION (115BR) BR INCLUDES:
EX SUPERSTRUCTURE OF
SN 074-0003 AT STA 925+86.00
CARRYING FAP RTE 721 (IL 10)
OVER GOOSE CREEK TO BE
REMOVED AND REPLACED
IMPROVEMENT BEGINS
STA 925+28.89
IMPROVEMENT ENDS
STA 926+43.31



FULL SIZE PLANS HAVE BEEN PREPARED USING STANDARD
ENGINEERING SCALES. REDUCED SIZED PLANS WILL NOT
CONFORM TO STANDARD SCALES. IN MAKING MEASUREMENTS
ON REDUCED PLANS, THE ABOVE SCALES MAY BE USED.

J.U.L.I.E.
JOINT UTILITY LOCATION INFORMATION FOR EXCAVATION
1-800-892-0123
OR 811 GOOSE CREEK TWP.

PROJECT ENGINEER JASON STULTS
PROJECT MANAGER RUSTIN KEYS
PHONE: (217) 465-4181
CONTRACT NO. 70432



GROSS LENGTH = 114.42 FT. = 0.0217 MILE
NET LENGTH = 114.42 FT. = 0.0217 MILE



M. Coombe Bloxdorf
ILLINOIS PROFESSIONAL NO 43208
EXPIRES 11-30-11
DATE: 7-15-11

CB Coombe-Bloxdorf P.C.
-CIVIL ENGINEERS-
-STRUCTURAL ENGINEERS-
-LAND SURVEYORS-
Design Firm License No. 184-002703

STATE OF ILLINOIS
DEPARTMENT OF TRANSPORTATION
DIVISION OF HIGHWAYS
SUBMITTED October 31 2013
Joseph E. Brown (P.E.)
DEPUTY DIRECTOR OF HIGHWAYS, REGION ENGINEER
Jan 24 2014
John D. Baranzee (P.E.)
ENGINEER OF DESIGN AND ENVIRONMENT
Jan 24 2014
Omer Osman (P.E.)
DIRECTOR OF HIGHWAYS, CHIEF ENGINEER

**PRINTED BY THE AUTHORITY
OF THE STATE OF ILLINOIS**