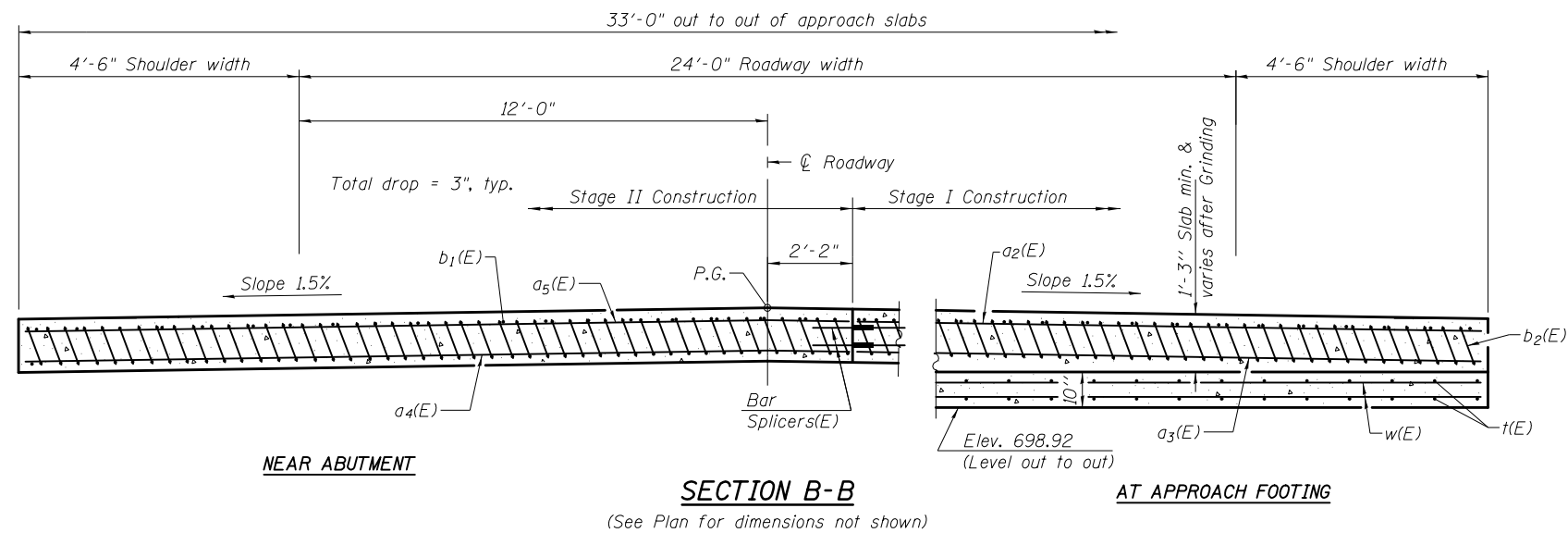


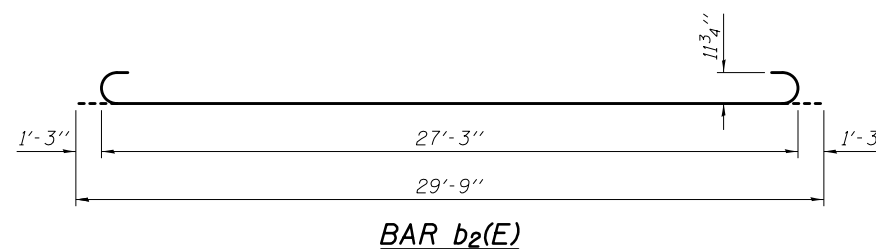
Notes:  
 See sheets 6 and 7 of 18 for Detail A.  
 Approach slab concrete shall be paid for as Concrete Superstructure.  
 Approach footing concrete shall be paid for as Concrete Structures.  
 Reinforcement shall be paid for as Reinforcement Bars, Epoxy Coated.  
 For v<sub>1</sub>(E) bar details, see sheet 14 of 18.  
 The approach footing maximum applied service bearing pressure (Q<sub>max</sub>) = 2.0 ksf.  
 For bar splicer details, see sheet 16 of 18.  
 Cost of excavation for approach footing included with Concrete Structures.



\* Tilt #9 b<sub>2</sub>(E) bars as required to maintain clearance.  
 \*\* Cost included with Concrete Superstructure.  
 \*\*\* Prior to Grinding

**TWO APPROACHES  
 BILL OF MATERIAL**

Bar	No.	Size	Length	Shape
a <sub>2</sub> (E)	50	#4	14'-0"	—
a <sub>3</sub> (E)	92	#5	14'-0"	—
a <sub>4</sub> (E)	92	#5	18'-4"	—
a <sub>5</sub> (E)	50	#4	18'-4"	—
b <sub>1</sub> (E)	54	#4	29'-8"	—
b <sub>2</sub> (E)	158	#9	29'-9"	⌋
t(E)	136	#4	9'-8"	—
w(E)	80	#5	14'-0"	—
w <sub>1</sub> (E)	80	#5	18'-4"	—
Concrete Superstructure			Cu. Yd.	99.2
Concrete Structures			Cu. Yd.	20.4
Reinforcement Bars, Epoxy Coated			Pound	24,810



FILE NAME =	USER NAME = keysrb	DESIGNED CME	REVISED -
c:\pwwork\pwwork\keysrb\0134590\0740003-70432-008-ASD3.dgn		CHECKED GJB	REVISED -
CB PROJECT NO. 08849-7	PLOT SCALE = 0:2.0000 '1' / in.	DRAWN MML	REVISED -
	PLOT DATE = 1/24/2014	CHECKED MCB	REVISED -

STATE OF ILLINOIS  
 DEPARTMENT OF TRANSPORTATION

BRIDGE APPROACH SLAB DETAILS  
 STRUCTURE NO. 074-0003

SHEET NO. 8 OF 18 SHEETS

**CB** Coombe-Bloxdorf P.C.  
 - CIVIL ENGINEERS -  
 - STRUCTURAL ENGINEERS -  
 - LAND SURVEYORS -  
 Design Firm License No. 184-002703

F.A.P. RTE.	SECTION	COUNTY	TOTAL SHEETS	SHEET NO.
721	(115B)BR	PIATT	39	19
				CONTRACT NO. 70432
ILLINOIS FED. AID PROJECT				

(Sheet 3 of 3)