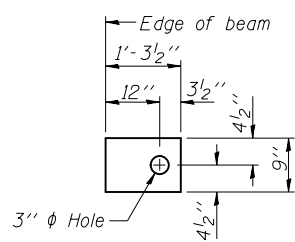


FABRIC BEARING PAD
(Interior)

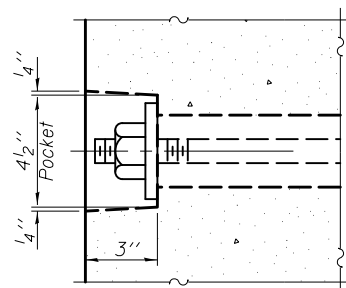


FABRIC BEARING PAD
(Exterior)

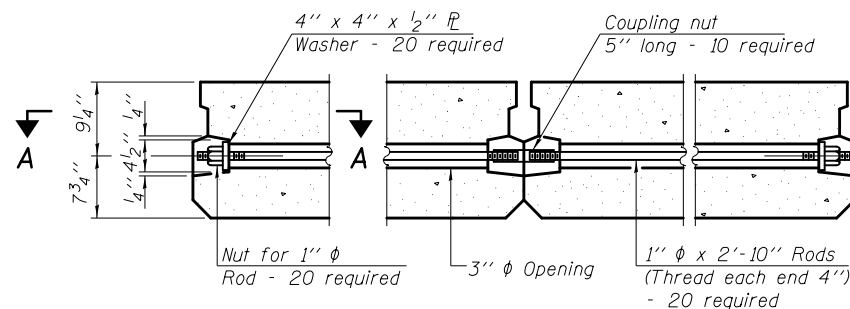
FIXED

Notes:

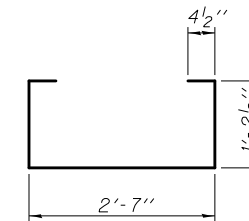
- All bearing pads shall be 1" thick.
- Omit holes when using expansion bearings.
- Expansion bearing pad shall be bonded to the substructure.



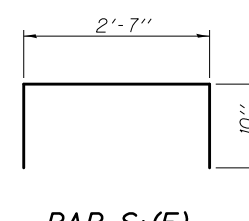
SECTION A-A



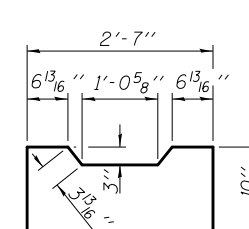
TYPICAL TRANSVERSE TIE ASSEMBLY



BAR S(E)

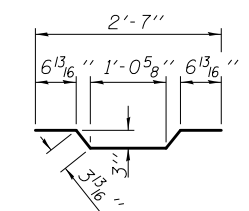


BAR S1(E)

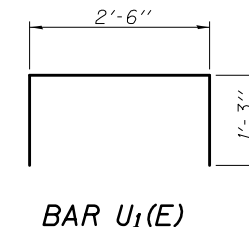


BAR U(E)

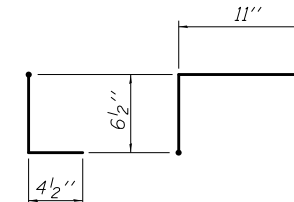
BAR S2(E)



BAR A1(E)



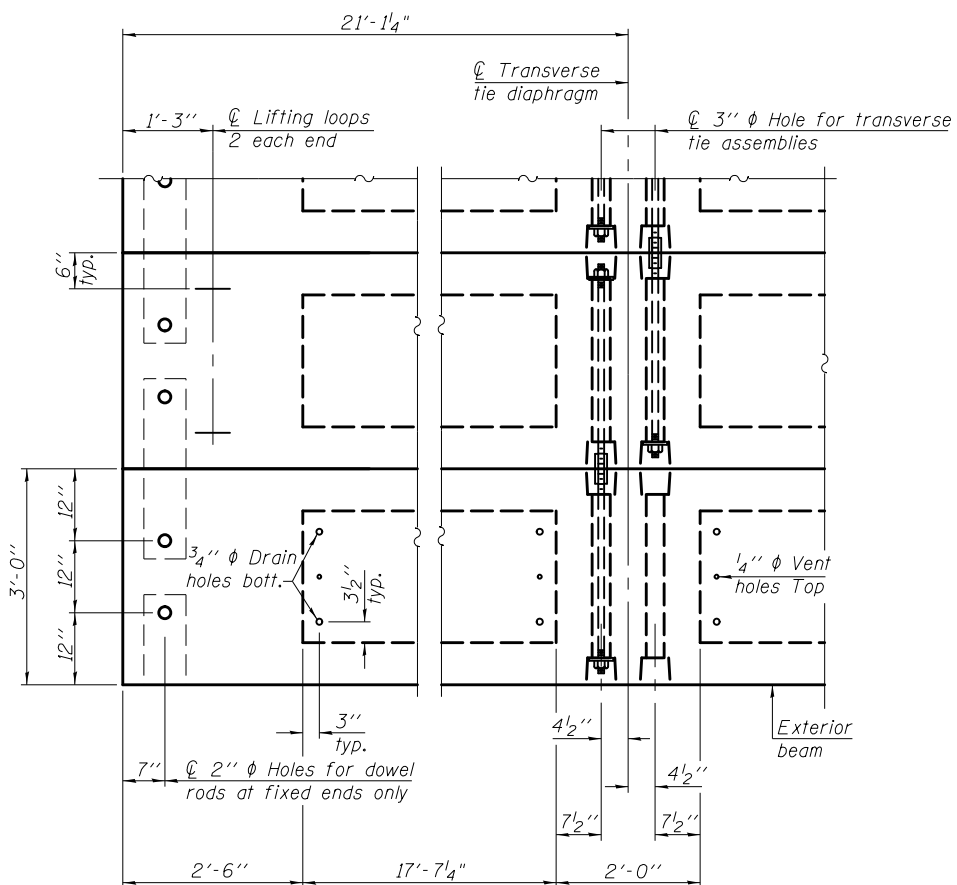
BAR U1(E)



BAR D(E)

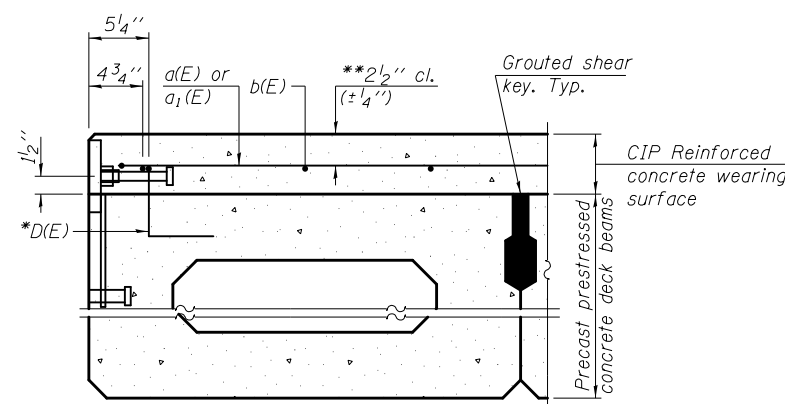
* Place 2-#4 D(E) bars in fascia beams at each post location shown on Sheet 4 of 17. D(E) bar included in cost of beam. (16 D(E) bars required per fascia beam)

**Prior to grinding.



PLAN VIEW

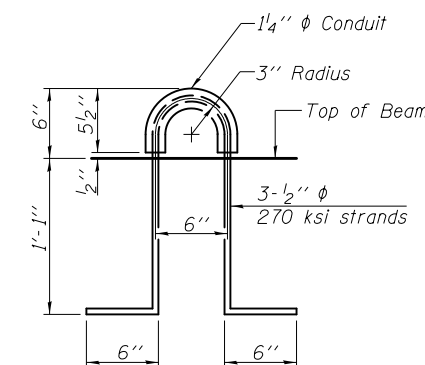
Note: Connect beams in pairs with the transverse tie configuration shown.



SECTION THRU FASCIA BEAM

NOTES

- Prestressing steel shall be uncoated high strength, low relaxation 7-wire strand, Grade 270. The nominal diameter shall be 1/2" and the nominal cross-sectional area shall be 0.153 sq. in.
- The 1" rods in the transverse tie assembly shall be tightened to a snug fit and the threads set. Pockets on exterior faces of bridge shall be filled with grout after transverse tie assembly is in place.
- Two 1/8" fabric adjusting shims of the dimensions of the exterior bearing pad shall be provided for each bearing pad location.
- A minimum 2 1/2" lifting pin shall be used to engage the lifting loops during handling.
- Corrosion Inhibitor, per Article 1020.05(b)(12) and 1021.06 of the Standard Specifications, shall be used in the concrete for precast prestressed concrete deck beams.
- Compressive strength of prestressed concrete, f'c, shall be 6000 psi.
- Compressive strength of prestressed concrete at release, f'ci, shall be 5000 psi.



LIFTING LOOP DETAIL

BILL OF MATERIAL

Precast Prestressed Conc. Deck Bms. (17" depth)	Sq. Ft.	1393
---	---------	------

PD-1736-0D

7-1-10

FILE NAME =	USER NAME = keysrb	DESIGNED = CME	REVISED =
ei:\pw\work\p\idot\keysrb\0134590\0740003-70432-011-BM2.dgn		CHECKED = GJB	REVISED =
	PLOT SCALE = 0:2.0000 '1' / in.	DRAWN = MML	REVISED =
CB PROJECT NO. 08049-7	PLOT DATE = 1/24/2014	CHECKED = MCB	REVISED =

STATE OF ILLINOIS
DEPARTMENT OF TRANSPORTATION

17" x 36" PPC DECK BEAM DETAILS
STRUCTURE NO. 074-0003

SHEET NO. 11 OF 18 SHEETS

CB Coombe-Bloxdorf P.C.
- CIVIL ENGINEERS -
- STRUCTURAL ENGINEERS -
- LAND SURVEYORS -
Design Firm License No. 184-002703

F.A.P. RFE.	SECTION	COUNTY	TOTAL SHEETS	SHEET NO.
721	(115BR)BR	PIATT	39	22

CONTRACT NO. 70432
ILLINOIS FED. AID PROJECT