

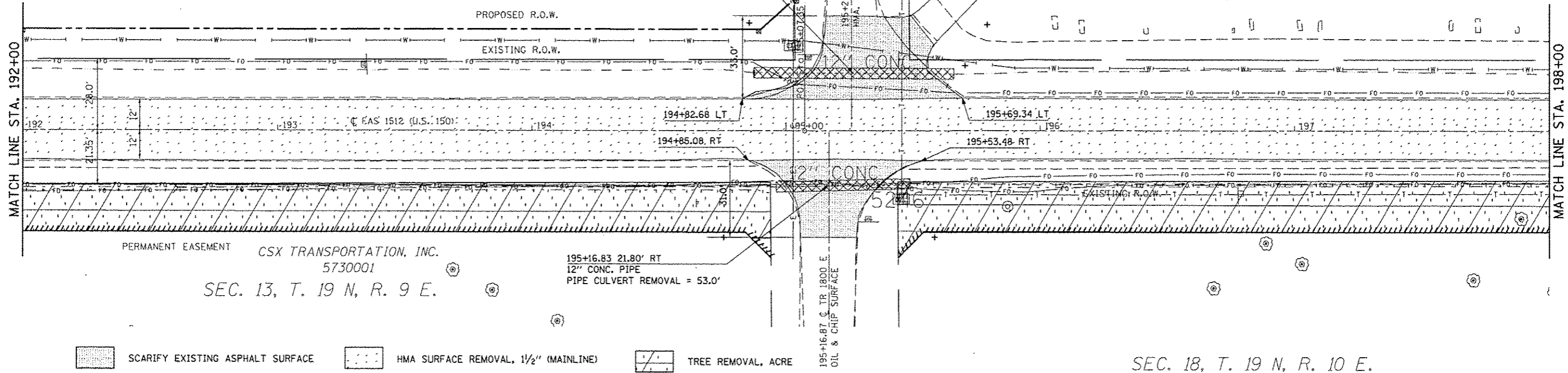
SEC. 12, T. 19 N, R. 9 E.

SEC. 7, T. 19 N, R. 10 E.

30-21-12-400-002
MERRYMAN, SHIRLEY H.
5730008

195+26.67 22.66' LT
12" CONC. PIPE
PIPE CULVERT REMOVAL = 79.0'

28-22-07-300-01
MT. OLIVE CEMETERY
5730009

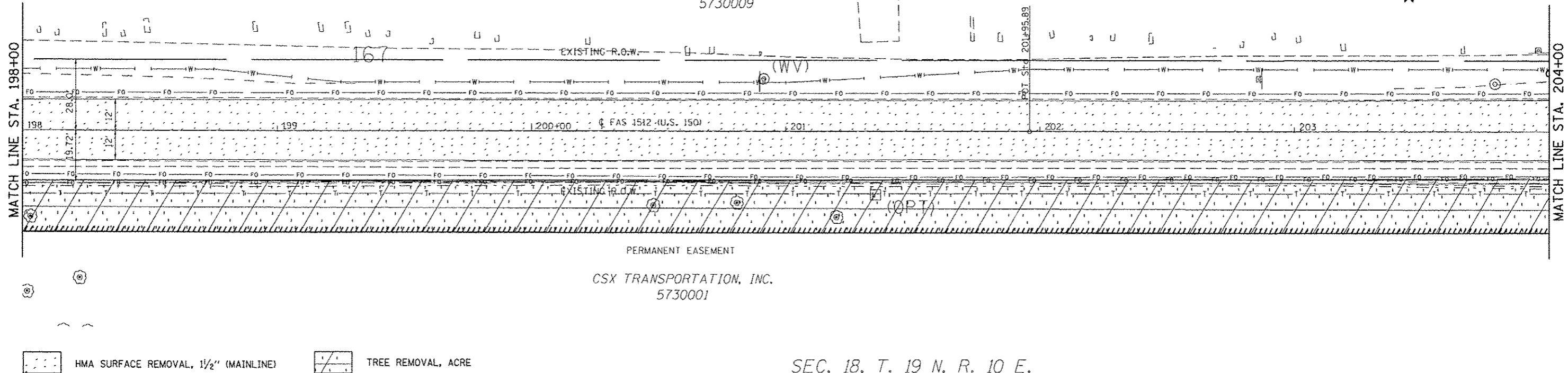


- SCARIFY EXISTING ASPHALT SURFACE
- HMA SURFACE REMOVAL, 1 1/2" (MAINLINE)
- TREE REMOVAL, ACRE

SEC. 18, T. 19 N, R. 10 E.

SEC. 7, T. 19 N, R. 10 E.

28-22-07-300-01
MT. OLIVE CEMETERY
5730009



- HMA SURFACE REMOVAL, 1 1/2" (MAINLINE)
- TREE REMOVAL, ACRE

SEC. 18, T. 19 N, R. 10 E.

FILE NAME -	USER NAME - ceerlock_jd	DESIGNED - JMS	REVISED -	STATE OF ILLINOIS DEPARTMENT OF TRANSPORTATION	REMOVAL DETAILS US 150 MAINLINE	F.A.U. RTE.	SECTION	COUNTY	TOTAL SHEETS	SHEET NO.
cd:\p\work\p101dot\ceerlock_jd\0120316\0120316-01	28663-shr-removal.dgn	DRAWN - JMS	REVISED -			• (2X,3)RS-3 & 2RS-4	CHAMPAIGN	551	51	
	PLOT SCALE = 1/8" = 100'	CHECKED -	REVISED -			• FAU 7152 & FAS 1512	CONTRACT NO. 70663			
	PLOT DATE = 10/10/2013	DATE - 051011	REVISED -			ILLINOIS FED. AID PROJECT				
					SCALE: 1:20	SHEET NO. 9 OF 27 SHEETS		STA. 192+00.00 TO STA. 204+00.00		