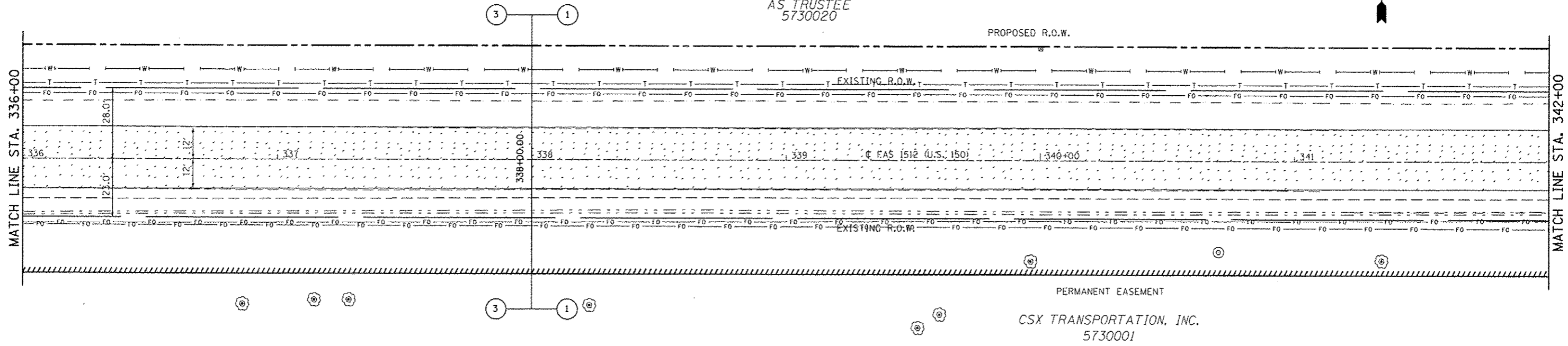


SEC. 9, T. 19 N, R. 10 E.

28-22-09-400-05  
BARCUSS, ROBERT CHARLES  
AS TRUSTEE  
5730020



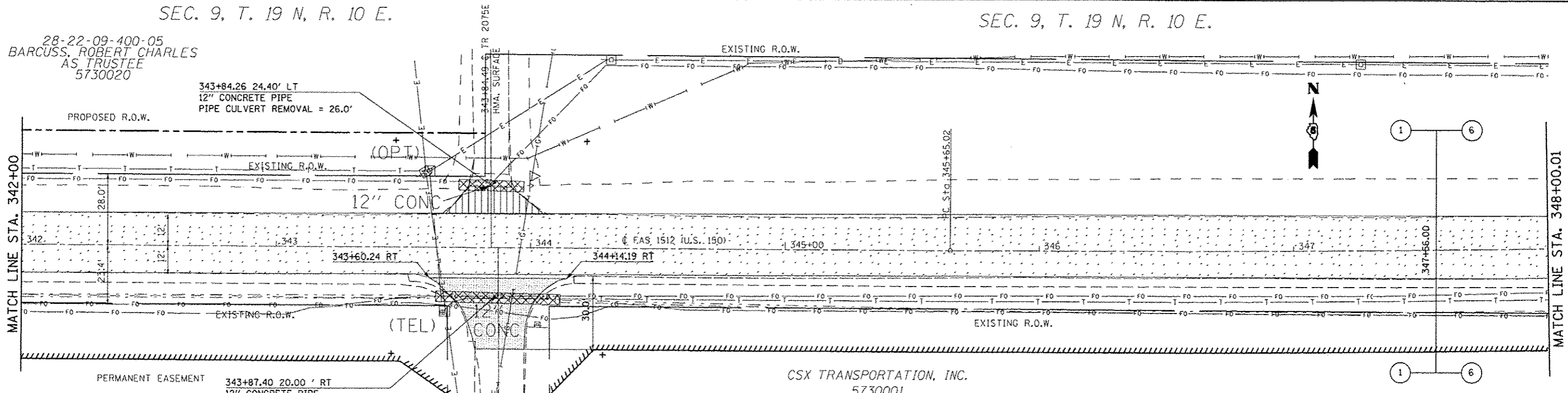
HMA SURFACE REMOVAL, 1/2" (MAINLINE)

SEC. 16, T. 19 N, R. 10 E.

SEC. 9, T. 19 N, R. 10 E.

28-22-09-400-05  
BARCUSS, ROBERT CHARLES  
AS TRUSTEE  
5730020

SEC. 9, T. 19 N, R. 10 E.



PERMANENT EASEMENT  
343+87.40 20.00' RT  
12" CONCRETE PIPE  
PIPE CULVERT REMOVAL = 50.0'

SCARIFYING AND REGRAVING EXISTING ASPHALT SURFACE

PAVEMENT REMOVAL

HMA SURFACE REMOVAL, 1/2" (MAINLINE)

SEC. 16, T. 19 N, R. 10 E.

SEC. 16, T. 19 N, R. 10 E.

FILE NAME : c:\pwwork\pwwork\barlock\j\0120316\0570663-sht-removal.dgn	USER NAME : barlock_jd	DESIGNED : JMS	REVISED : -	<b>STATE OF ILLINOIS DEPARTMENT OF TRANSPORTATION</b>	<b>REMOVAL DETAILS US 150 MAINLINE</b>	F.A.U. RTE.	SECTION	COUNTY	TOTAL SHEETS	SHEET NO.
PLT SCALE : 1/8" = 40.0000' / 1/4"	CHECKED : JMS	REVISED : -	• FAU 7152 & FAS 1512			(2X,3RS-3 & 2RS-4)	CHAMPAIGN	551	63	
PLT DATE : 10/10/2013	DATE : 051011	REVISED : -	CONTRACT NO. 70663			ILLINOIS FED. AID PROJECT				
SCALE: 1:20						SHEET NO. 21 OF 27 SHEETS		STA. 336+00.00 TO STA. 348+00.01		