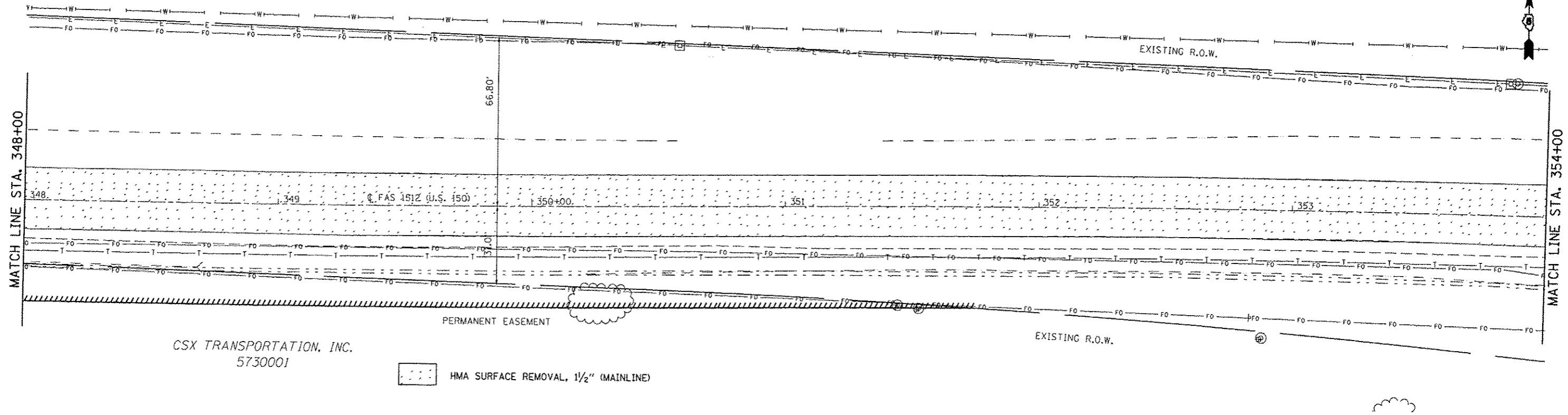


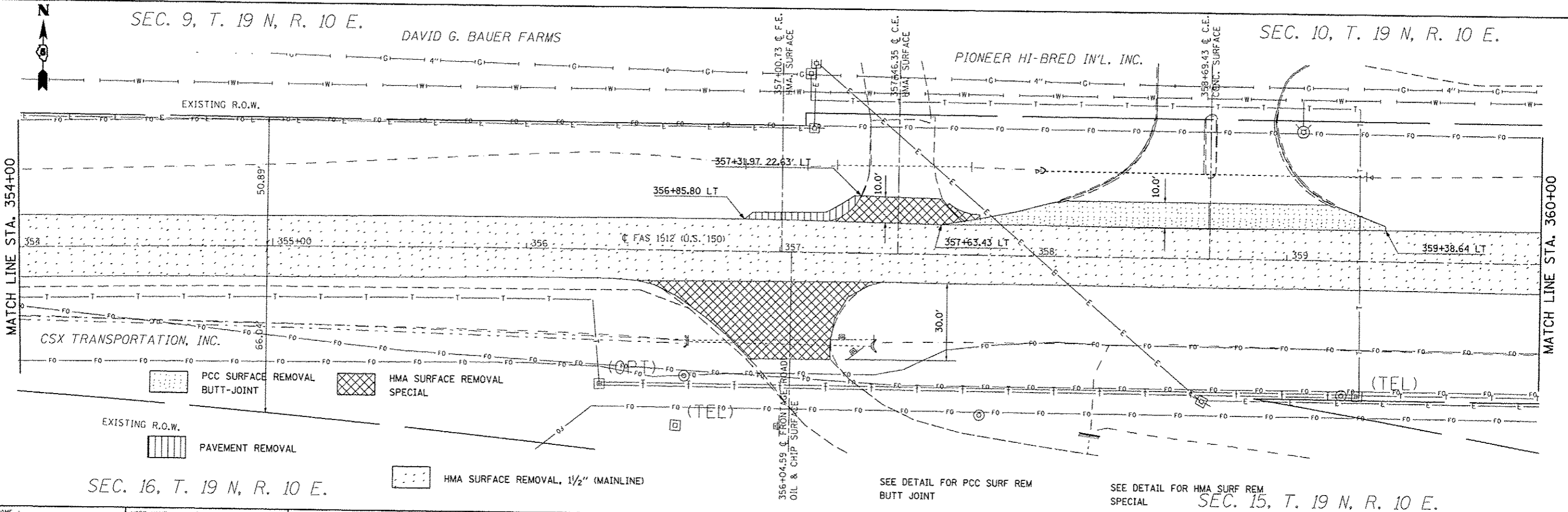
SEC. 9, T. 19 N, R. 10 E.



CSX TRANSPORTATION, INC.
5730001

HMA SURFACE REMOVAL, 1 1/2" (MAINLINE)

SEC. 16, T. 19 N, R. 10 E.



SEC. 9, T. 19 N, R. 10 E.

DAVID G. BAUER FARMS

PIONEER HI-BRED IN'L. INC.

SEC. 10, T. 19 N, R. 10 E.

CSX TRANSPORTATION, INC.

PCC SURFACE REMOVAL BUTT-JOINT

HMA SURFACE REMOVAL SPECIAL

EXISTING R.O.W.

PAVEMENT REMOVAL

HMA SURFACE REMOVAL, 1 1/2" (MAINLINE)

SEC. 16, T. 19 N, R. 10 E.

SEE DETAIL FOR PCC SURF REM BUTT JOINT

SEE DETAIL FOR HMA SURF REM SPECIAL

SEC. 15, T. 19 N, R. 10 E.

FILE NAME : d:\pwwork\pwwork\user\lockj\0812016\070663-shr-removal.dgn	USER NAME : user\lockj	DESIGNED - JMS	REVISED -	STATE OF ILLINOIS DEPARTMENT OF TRANSPORTATION	REMOVAL DETAILS US 150 MAINLINE	F.A.U. RTE.	SECTION	COUNTY	TOTAL SHEETS	SHEET NO.
PLOT SCALE : 48.0000 / in.	CHECKED -	REVISED -	• 2X, 3RS-3 & 2RS-4			CHAMPAIGN	551 64			
PLOT DATE : 10/10/2013	DATE - 051011	REVISED -	• FAU 7152 & FAS 1512			CONTRACT NO. 70663				
			ILLINOIS FED. AID PROJECT							
					SCALE: 1:20	SHEET NO. 22 OF 28 SHEETS		STA. 348+00.01 TO STA. 360+00.00		