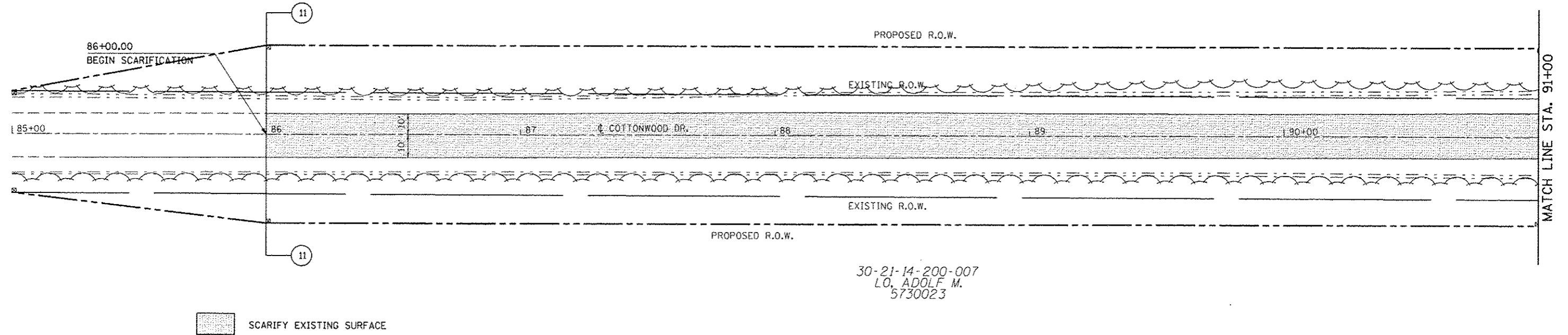


SEC. 14, T. 19 N, R. 9 E.

30-21-14-200-004  
LO. ADOLF M.  
5730023



30-21-14-200-007  
LO. ADOLF M.  
5730023

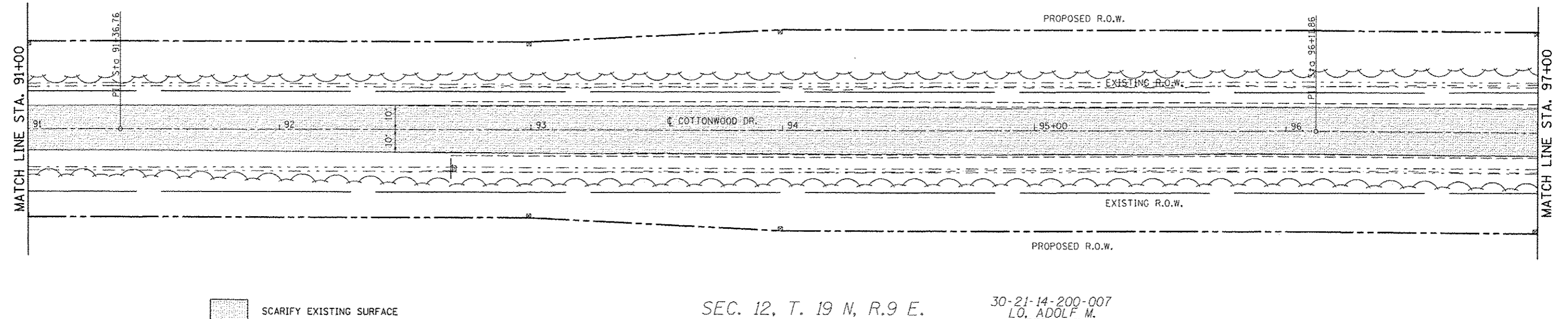
SCARIFY EXISTING SURFACE



MATCH LINE STA. 91+00



30-21-14-200-004  
LO. ADOLF M.  
5730023



SCARIFY EXISTING SURFACE

SEC. 12, T. 19 N, R. 9 E.

30-21-14-200-007  
LO. ADOLF M.  
5730023

FILE NAME: c:\pwork\pwork\cncrlock\48128310\0570663-sht-removal.dgn	USER NAME: cncrlock_jd	DESIGNED: JMS	REVISED: -	<b>STATE OF ILLINOIS DEPARTMENT OF TRANSPORTATION</b>	<b>REMOVAL DETAILS COTTONWOOD DRIVE</b>			F.A.U. RTE.	SECTION	COUNTY	TOTAL SHEETS	SHEET NO.
PLDT SCALE: 48.0000' / 1" = 48'	CHECKED: -	REVISOR: -	DATE: 051211		SCALE: 1:20	SHEET NO. 1 OF 2 SHEETS	STA. 85+00.00 TO STA. 97+00.00	* FAU 7152 & FAS 1512	(2X,3)RS-3 & 2RS-4	Champaign	551	71
PLDT DATE: 10/18/2013	DATE: 051211	REVISOR: -	REVISOR: -					CONTRACT NO. 70663				
								ILLINOIS FED. AID PROJECT				