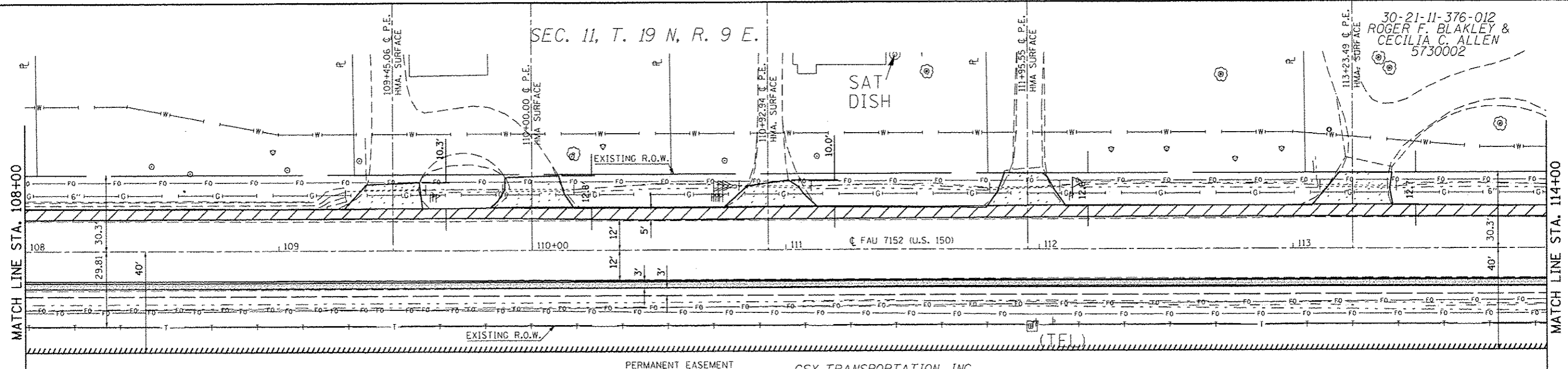


DATE	
BY	
REVISIONS	
PLANNED	
ALIGNED	
CHECKED	
NOTE BOOK	
NO.	
FILE NAME	

DATE	
BY	
REVISIONS	
PROFILES	
CHECKED	
GRADES	
NOTE BOOK	
NO.	
FILE NAME	

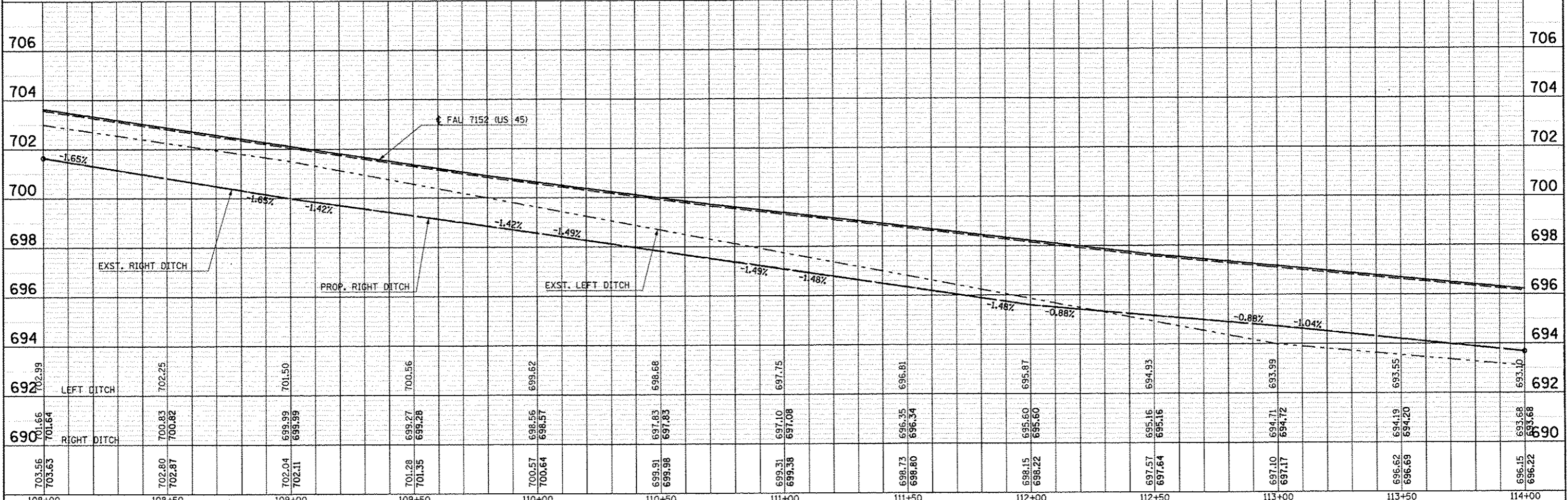


SEE DETAIL FOR HMA SURF. REM FOR SHOULDERS      SEE DETAIL FOR HMA SURF REM, SPL

PERMANENT EASEMENT CSX TRANSPORTATION, INC. 5730001

- HMA SHOULDERS, 6"
- HMA SHOULDERS
- INCIDENTAL HMA SURFACING
- AGG SHOULDERS-TYPE B, 6"

SEC. 14, T. 19 N, R. 9 E.



FILE NAME	USER NAME	DESIGNED	REVISED	<b>STATE OF ILLINOIS DEPARTMENT OF TRANSPORTATION</b>	<b>US 150 MAINLINE PLAN AND PROFILE SHEET</b>		F.A.U. RTE.	SECTION	COUNTY	TOTAL SHEETS	SHEET NO.	
c:\p\work\prdat\eeo-lock_jd\0120316\0574062-sh1-plnpr.f.dgn	eeo-lock_jd	JMS	-		SCALE: 1" = 20'	SHEET NO. 3 OF 54 SHEETS	STA. 108+00.00 TO STA. 114+00.00	(2X,3)RS-3 & 2RS-4	Champaign	551	84	
PLOT SCALE = 40.0000 / 1		CHECKED	-					F.A.U. 7152 & F.A.S. 1512				CONTRACT NO. 70663
PLOT DATE = 10/18/2013		DATE	081610					ILLINOIS FED. AID PROJECT				