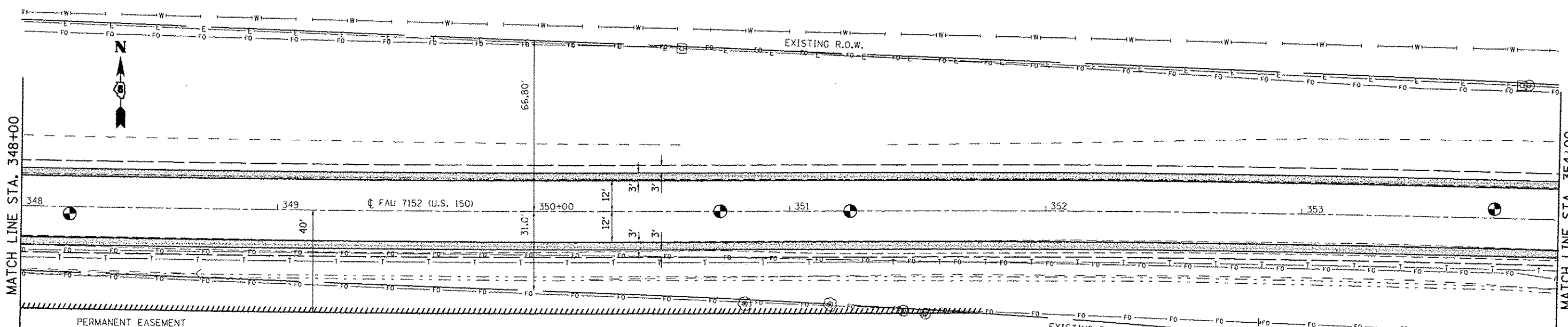


SEC. 9, T. 19 N, R. 10 E.



PLAN	DATE
BY	
REVISIONS	
NO.	
DATE	
BY	
REVISIONS	
NO.	
DATE	
BY	
REVISIONS	
NO.	
DATE	

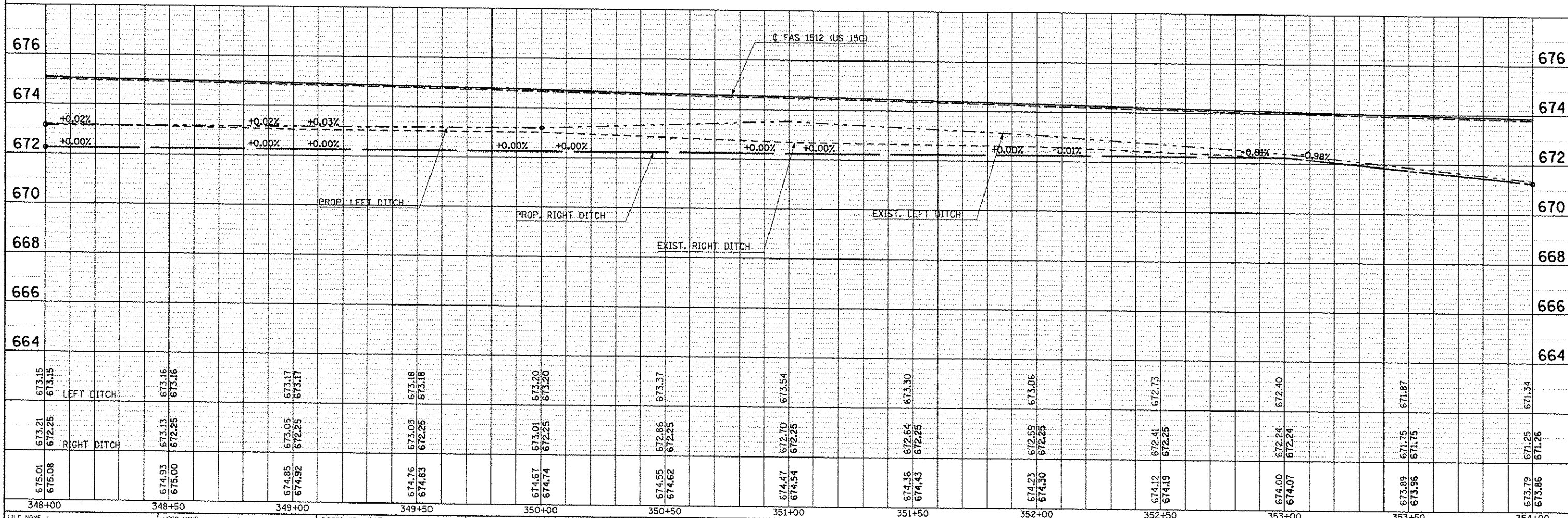
- PERMANENT EASEMENT
- AGG SHOULDERS-TYPE B, 6"
- HMA SHOULDERS, 6"
- P.I. STA. 348+18.95
- P.T. STA. 350+72.80
- P.O.T. STA. 351+13.28
- P.I. STA. 353+75.10

EXIST. CURVE CURV28
 PI STA. = 348+18.95
 $\Delta = 2^\circ 27' 36''$ (L.T.)
 $D = 0^\circ 29' 04''$
 $R = 11,826.80'$
 $T = 253.93'$
 $L = 507.77'$
 $E = 2.73'$
 $\phi =$
 $T.R. =$
 $S.E. RUN =$
 $P.C. STA. = 345+65.02$
 $P.T. STA. = 350+72.80$

CSX TRANSPORTATION, INC.
 5730001

SEC. 16, T. 19 N, R. 10 E.

PROFILE	DATE
BY	
REVISIONS	
NO.	
DATE	
BY	
REVISIONS	
NO.	
DATE	
BY	
REVISIONS	
NO.	
DATE	



FILE NAME =	USER NAME = cearlock.jf	DESIGNED JMS	REVISION -	STATE OF ILLINOIS DEPARTMENT OF TRANSPORTATION	US 150 MAINLINE PLAN AND PROFILE SHEET	F.A.U. RTE. SECTION COUNTY TOTAL SHEETS SHEET NO.	
DRAWN JMS	CHECKED -	REVISION -	F.A.U. 7152 & F.A.S. 1512 CONTRACT NO. 70663 ILLINOIS FEQ. AID PROJECT				
PLOT SCALE = 40.0000' / 1" =	DATE 081610	REVISION -					
PLOT DATE = 10/18/2013		REVISION -					
SCALE: 1" = 20'		SHEET NO. 43 OF 54 SHEETS		STA. 348+00.00 TO STA. 354+00.00		SECTION COUNTY TOTAL SHEETS SHEET NO.	