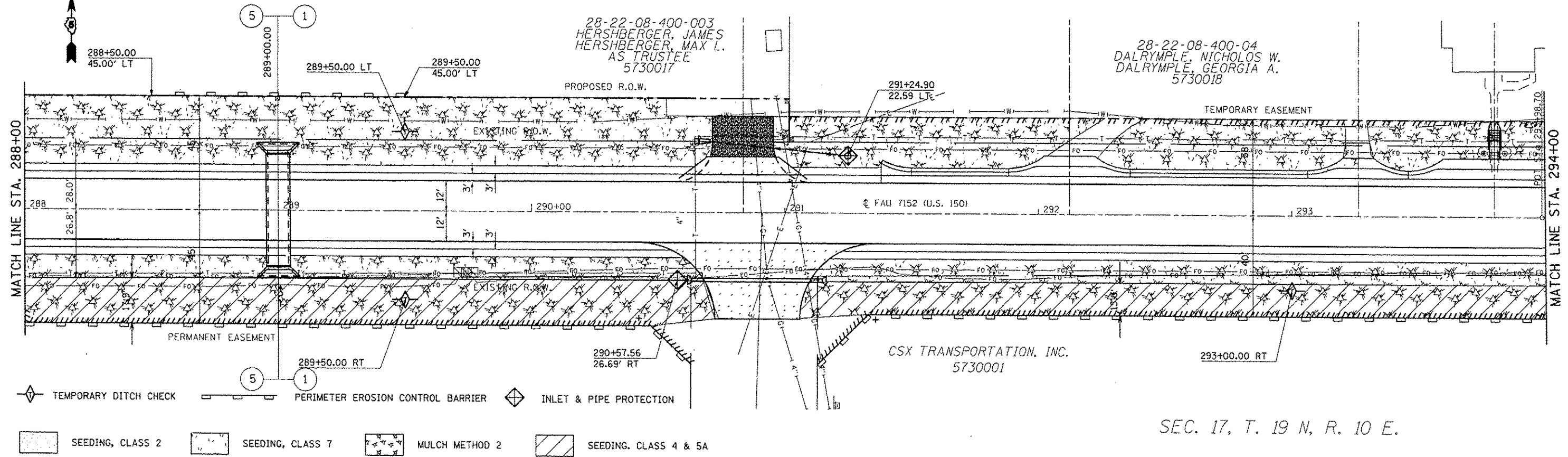
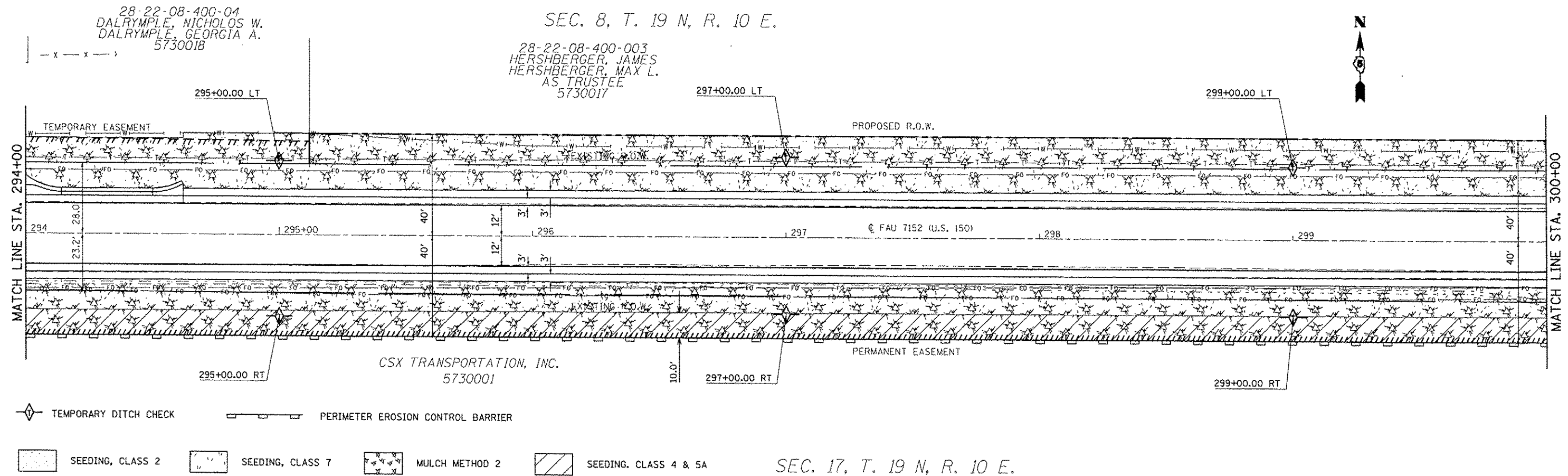


SEC. 8, T. 19 N, R. 10 E.



SEC. 17, T. 19 N, R. 10 E.

SEC. 8, T. 19 N, R. 10 E.



SEC. 17, T. 19 N, R. 10 E.

FILE NAME =	USER NAME = amr/lockjd	DESIGNED -	REVISED -	STATE OF ILLINOIS DEPARTMENT OF TRANSPORTATION	EROSION CONTROL DETAILS US 150 MAINLINE			F.A.U. RTE.	SECTION	COUNTY	TOTAL SHEETS	SHEET NO.
er:\pwwork\spidat\carlockjd\0128316\0128316.dgn	70663-sh1-erosioncontrol.dgn	DRAWN -	REVISED -		SCALE: 1:20	SHEET NO. 17 OF 23 SHEETS	STA. 288+00.00 TO STA. 300+00.00	• (2X,3RS-3 & 2RS-4	Champaign	551	160	
	PLOT SCALE = 48.0000 / in.	CHECKED -	REVISED -					• F.A.U. 7152 & F.A.S. 1512				CONTRACT NO. 70663
	PLOT DATE = 10/10/2013	DATE	REVISED -					ILLINOIS FED. AID PROJECT				