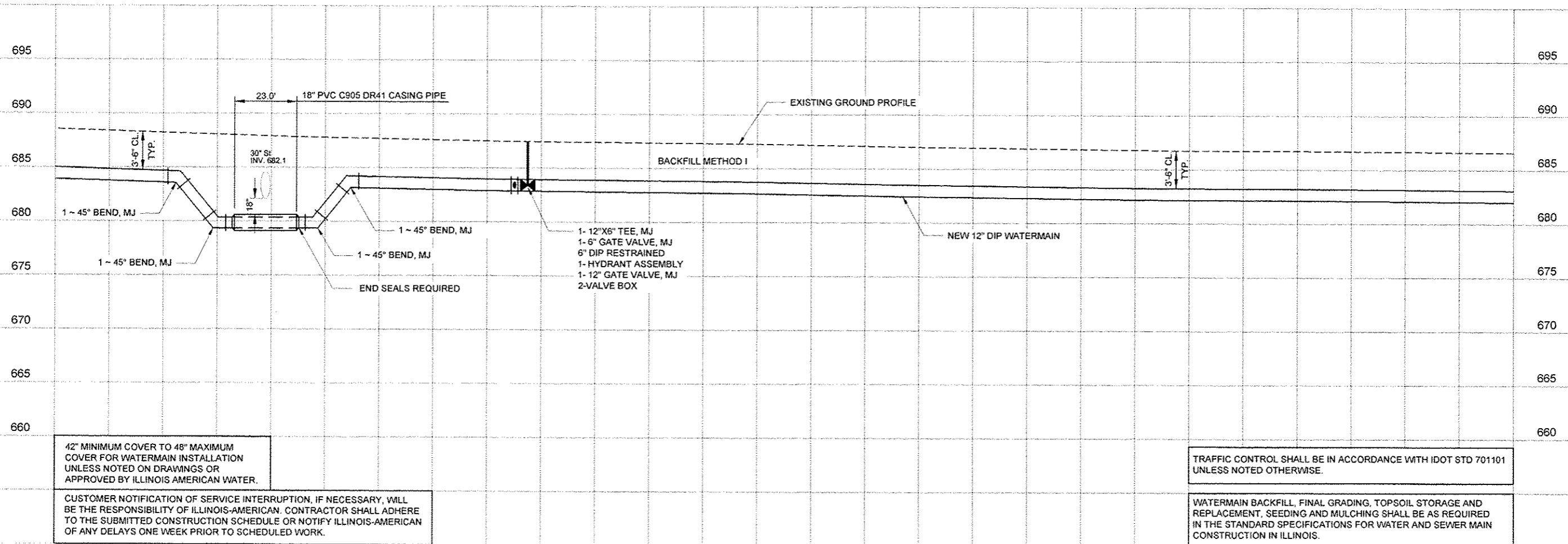
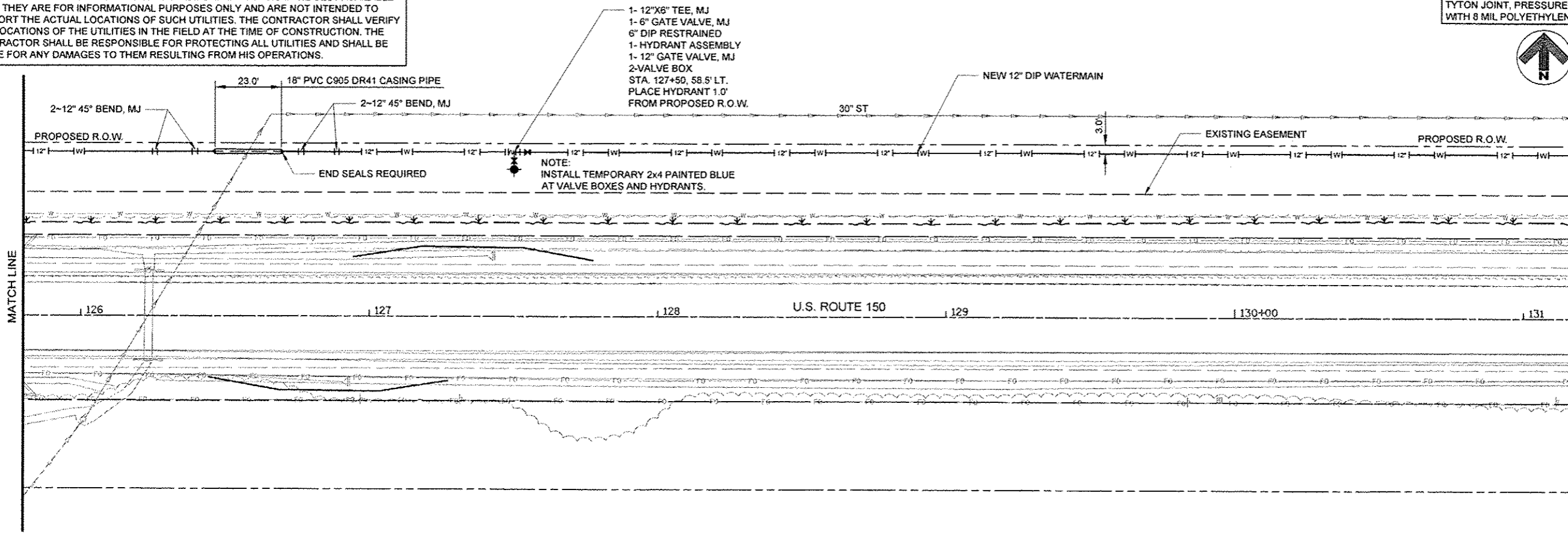


THE LOCATION OF THE UTILITIES SHOWN ARE DETERMINED FROM THE BEST AVAILABLE DATA. THEY ARE FOR INFORMATIONAL PURPOSES ONLY AND ARE NOT INTENDED TO PURPORT THE ACTUAL LOCATIONS OF SUCH UTILITIES. THE CONTRACTOR SHALL VERIFY THE LOCATIONS OF THE UTILITIES IN THE FIELD AT THE TIME OF CONSTRUCTION. THE CONTRACTOR SHALL BE RESPONSIBLE FOR PROTECTING ALL UTILITIES AND SHALL BE LIABLE FOR ANY DAMAGES TO THEM RESULTING FROM HIS OPERATIONS.

NEW WATERMAIN SHALL BE 12-INCH D.I.P. TYTON JOINT, PRESSURE CLASS 350 WITH 8 MIL POLYETHYLENE PIPE WRAP



42" MINIMUM COVER TO 48" MAXIMUM COVER FOR WATERMAIN INSTALLATION UNLESS NOTED ON DRAWINGS OR APPROVED BY ILLINOIS AMERICAN WATER.

CUSTOMER NOTIFICATION OF SERVICE INTERRUPTION, IF NECESSARY, WILL BE THE RESPONSIBILITY OF ILLINOIS-AMERICAN. CONTRACTOR SHALL ADHERE TO THE SUBMITTED CONSTRUCTION SCHEDULE OR NOTIFY ILLINOIS-AMERICAN OF ANY DELAYS ONE WEEK PRIOR TO SCHEDULED WORK.

TRAFFIC CONTROL SHALL BE IN ACCORDANCE WITH IDOT STD 701101 UNLESS NOTED OTHERWISE.

WATERMAIN BACKFILL, FINAL GRADING, TOPSOIL STORAGE AND REPLACEMENT, SEEDING AND MULCHING SHALL BE AS REQUIRED IN THE STANDARD SPECIFICATIONS FOR WATER AND SEWER MAIN CONSTRUCTION IN ILLINOIS.

**Foth**  
 Foth Infrastructure & Environment, LLC  
 1610 Broadmoor Drive  
 Champaign, IL 61821  
 Phone: 217-352-4189 Fax: 217-352-0085  
 Illinois Professional Design Firm No. 184-004913

REUSE OF DOCUMENTS  
 THIS DOCUMENT HAS BEEN DEVELOPED FOR A SPECIFIC APPLICATION AND NOT FOR GENERAL USE. IT IS THE RESPONSIBILITY OF THE USER TO VERIFY THE ACCURACY OF THE INFORMATION AND TO OBTAIN NECESSARY PERMISSIONS FROM FOTH INFRASTRUCTURE AND ENVIRONMENT, LLC. UNAPPROVED USE IS THE SOLE RESPONSIBILITY OF THE UNAUTHORIZED USER.

**ROUTE 150 WATERMAIN RELOCATION  
 BETWEEN URBANA AND ST. JOSEPH  
 ILLINOIS AMERICAN WATER COMPANY  
 IDOT CONTRACT NO. 70663**

CHAMPAIGN COUNTY  
 URBANA, ILLINOIS

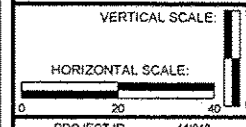
NO.	DATE	DESCRIPTION

RECORD DRAWINGS OF COMPLETED CONSTRUCTION BY  
 RECORD DRAWINGS OF COMPLETED CONSTRUCTION  
 CONFORMING TO CONTRACTOR AND/OR OWNER'S RECORDS.  
 BY: \_\_\_\_\_ DATE: \_\_\_\_\_

Date of Preparation: July 17, 2013

	BY	DATE
SURVEYED	FOTH	07-13-2013
DRAWN	WGH	07-17-2013
DESIGNED	MAJ	07-17-2013
CHECKED	MAJ	07-17-2013

SHEET NAME  
 STA. 125+80 TO  
 STA. 131+20



**C1.03**  
 SHEET 6 OF 29