

THE LOCATION OF THE UTILITIES SHOWN ARE DETERMINED FROM THE BEST AVAILABLE DATA. THEY ARE FOR INFORMATIONAL PURPOSES ONLY AND ARE NOT INTENDED TO PURPORT THE ACTUAL LOCATIONS OF SUCH UTILITIES. THE CONTRACTOR SHALL VERIFY THE LOCATIONS OF THE UTILITIES IN THE FIELD AT THE TIME OF CONSTRUCTION. THE CONTRACTOR SHALL BE RESPONSIBLE FOR PROTECTING ALL UTILITIES AND SHALL BE LIABLE FOR ANY DAMAGES TO THEM RESULTING FROM HIS OPERATIONS.

NEW WATERMAIN SHALL BE 12-INCH D.I.P.
TYTON JOINT, PRESSURE CLASS 350
WITH 8 MIL POLYETHYLENE PIPE WRAP



Foth
Foth Infrastructure & Environment, LLC
1810 Riverside Drive
Champaign, IL 61821
Phone: 217-352-4168 Fax: 217-352-2085
Illinois Professional Design Firm No. 184.004913

REUSE OF DOCUMENTS
THIS DOCUMENT HAS BEEN DEVELOPED FOR A SPECIFIC APPLICATION AND NOT FOR GENERAL USE. THEREFORE IT MAY NOT BE USED WITHOUT THE WRITTEN APPROVAL OF FOTH INFRASTRUCTURE AND ENVIRONMENT, LLC. UNAPPROVED USE IS THE SOLE RESPONSIBILITY OF THE UNAUTHORIZED USER.

**ROUTE 150 WATERMAIN RELOCATION
BETWEEN URBANA AND ST. JOSEPH**
ILLINOIS AMERICAN WATER COMPANY
IDOT CONTRACT NO. 70663
CHAMPAIGN COUNTY
URBANA, ILLINOIS

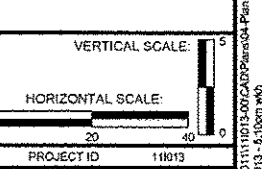
NO.	BY	DATE	DESCRIPTION

RECORD DRAWING OF COMPLETED CONSTRUCTION BY
RECORD DRAWINGS OF COMPLETED CONSTRUCTION
CONFORMING TO CONTRACTOR AND/OR OWNERS RECORDS.
BY: _____ DATE: _____

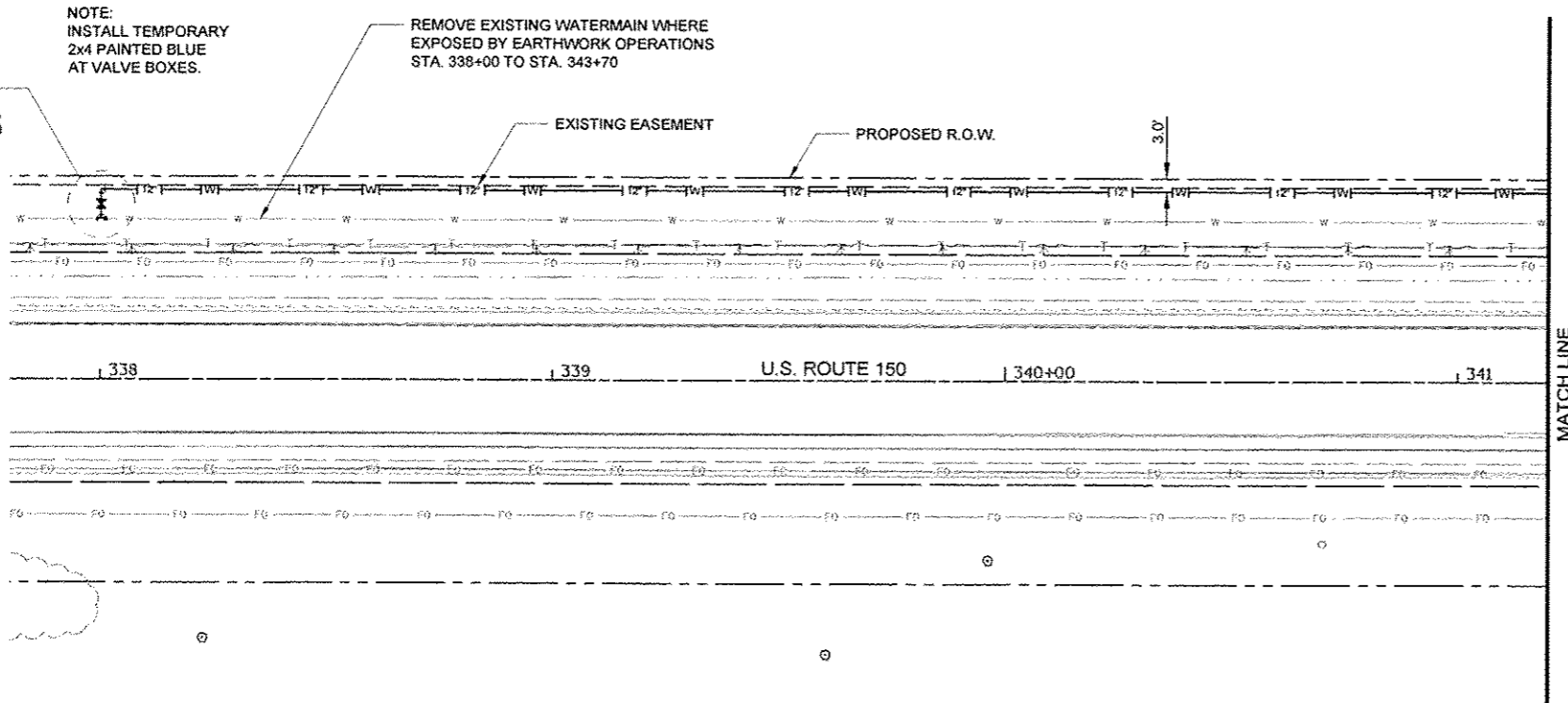
Date of Preparation: July 17, 2013

	BY	DATE
SURVEYED	FOTH	07-13-2013
DRAWN	WGH	07-17-2013
DESIGNED	MAJ	07-17-2013
CHECKED	MAJ	07-17-2013

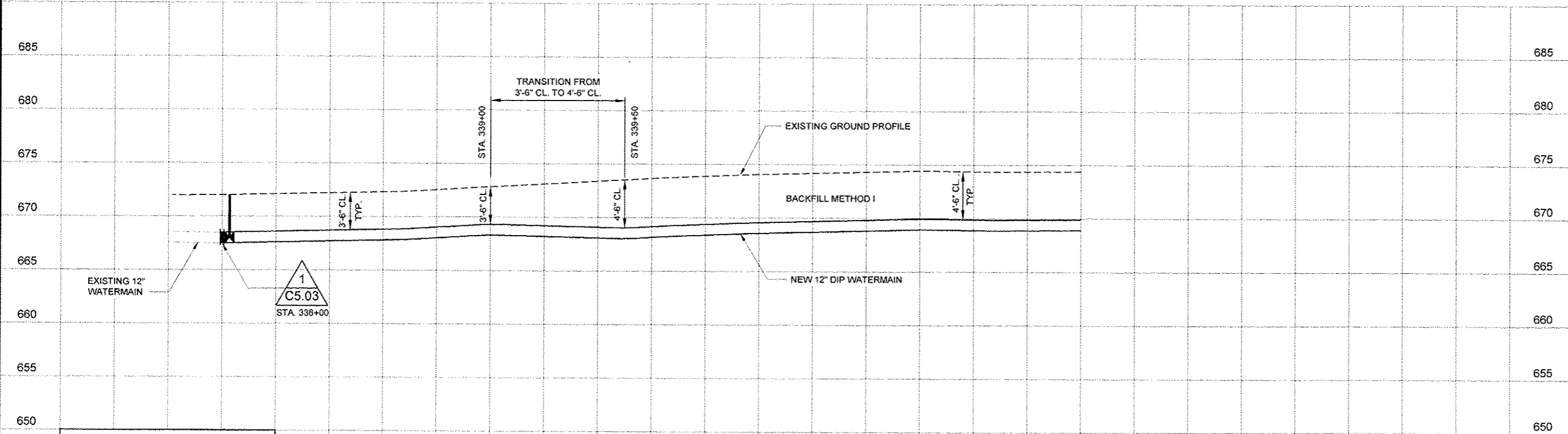
SHEET NAME
STA. 338+00 TO
STA. 341+20



C1.22
SHEET 25 OF 29



NOTICE
SEE "EXISTING WATERMAIN SHUT-OFF"
SHEET G0.03, FOR REQUIRED PROCEDURES
TO CUT AND PLUG EXISTING MAIN



42" MINIMUM COVER TO 48" MAXIMUM COVER FOR WATERMAIN INSTALLATION UNLESS NOTED ON DRAWINGS OR APPROVED BY ILLINOIS AMERICAN WATER.

CUSTOMER NOTIFICATION OF SERVICE INTERRUPTION, IF NECESSARY, WILL BE THE RESPONSIBILITY OF ILLINOIS-AMERICAN. CONTRACTOR SHALL ADHERE TO THE SUBMITTED CONSTRUCTION SCHEDULE OR NOTIFY ILLINOIS-AMERICAN OF ANY DELAYS ONE WEEK PRIOR TO SCHEDULED WORK.

TRAFFIC CONTROL SHALL BE IN ACCORDANCE WITH IDOT STD 701101 UNLESS NOTED OTHERWISE.

WATERMAIN BACKFILL, FINAL GRADING, TOPSOIL STORAGE AND REPLACEMENT, SEEDING AND MULCHING SHALL BE AS REQUIRED IN THE STANDARD SPECIFICATIONS FOR WATER AND SEWER MAIN CONSTRUCTION IN ILLINOIS.