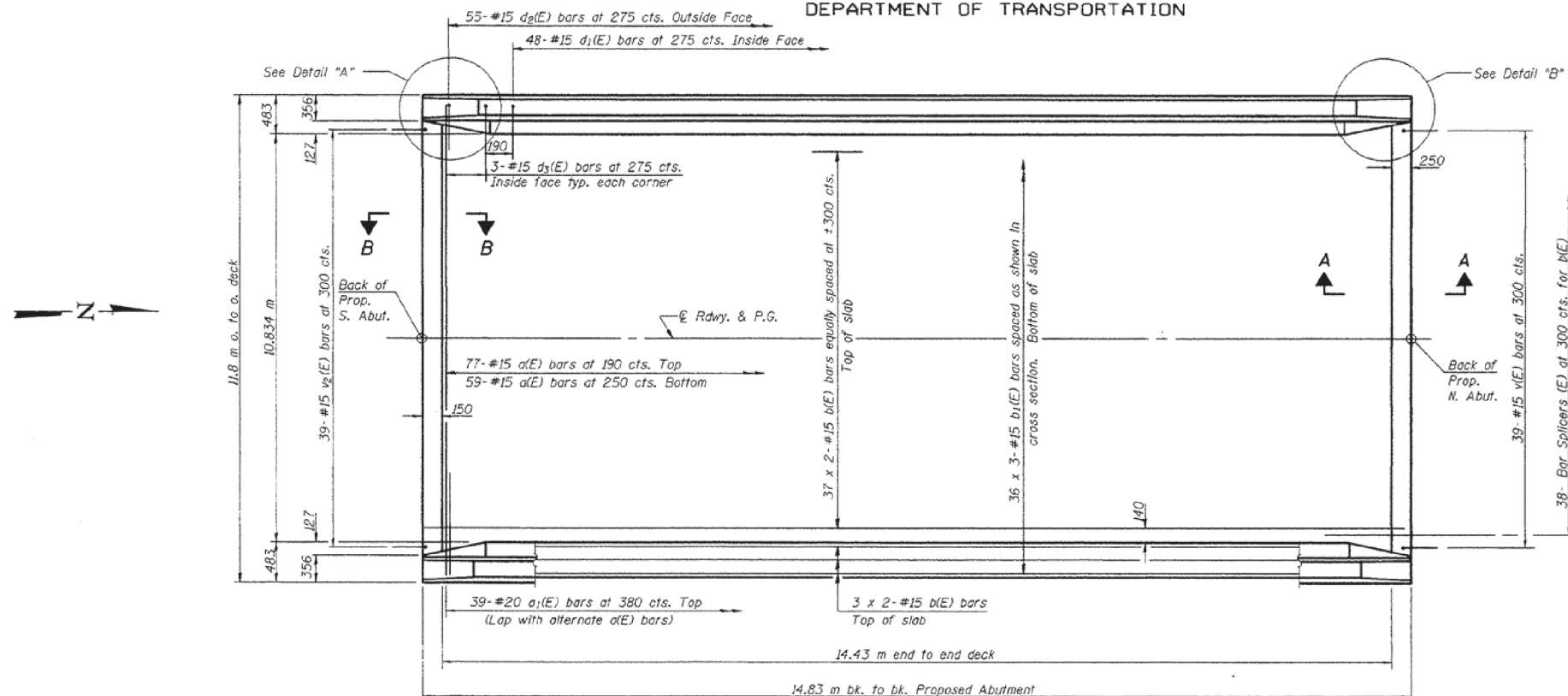


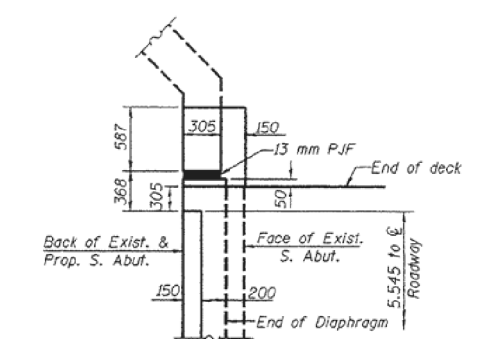
STATE OF ILLINOIS
DEPARTMENT OF TRANSPORTATION

ROUTE NO.	SECTION	COUNTY	TOTAL SHEETS	SHEET NO.
F.A.S. RTE. 1671	SEC. 22BR-1	DOUGLAS	11	13
PRELIMINARY SHEET NO. 7	SUBPROJECT	FEEDBACK PROJECT		

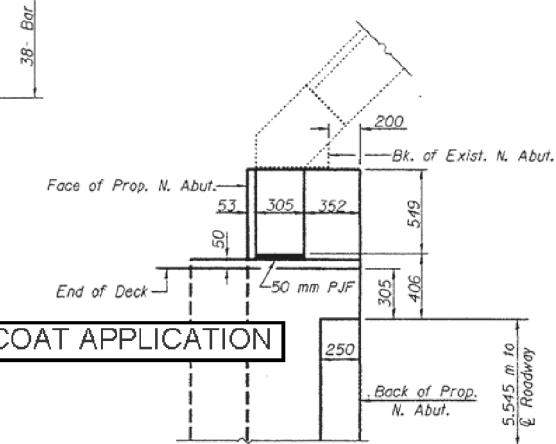
SHEET NO. 3
13 SHEET
90948



PLAN

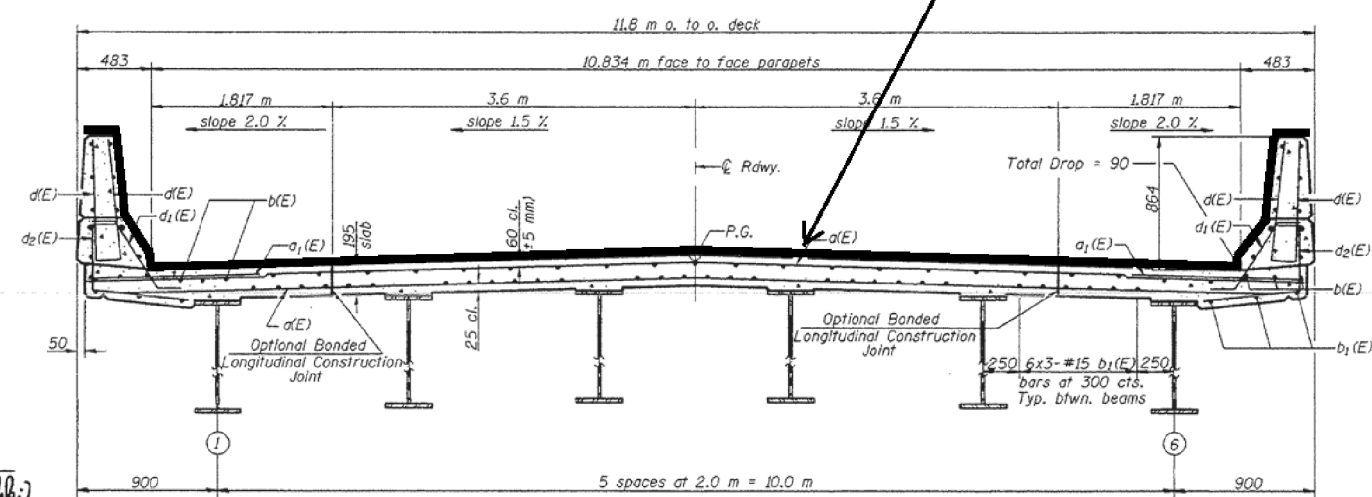


DETAIL "A"
Parapet and Approach not shown.



DETAIL "B"
Parapet and Approach not shown.

PROPOSED PROTECTIVE COAT APPLICATION



TYPICAL SECTION; TWO-LANE TWO-WAY WITH PARAPET

CROSS SECTION
(Looking North)

MIN. BAR LAPS
#15 bars = 640

Notes: See Sheet 4 of 13 for superstructure details and Bill of Material.
Reinforcement bars designated (E) shall be epoxy coated.
Bars indicated thus 1 x 3-#15 etc. indicates 1 line of bars with 3 lengths per line.
See Sheet 4 of 13 for parapet reinforcement.
All dimensions are in millimeters (mm) except as noted.
See sheet 12 of 13 for bar splicer details.

SUPERSTRUCTURE
F.A.S. RTE. 1671 SEC. 22BR-1
DOUGLAS COUNTY
STATION 22+618.644
STRUCTURE NO. 021-0011

DESIGNED Jonas H. Patty	January 30 2084
CHECKED Mark D. Shaffer	EXAMINED Thomas J. Donagale
DRAWN R. Sommer	PASSED Ralph C. Anderson
CHECKED J.D.P./M.D.S.	

FILE NAME =	USER NAME = ppersonbr	DESIGNED - TJB	REVISED -	STATE OF ILLINOIS DEPARTMENT OF TRANSPORTATION	TYPICAL SECTION; 2 LANE 2 WAY HIGHWAY WITH PARAPET	F.A.I. RTE.	SECTION	COUNTY	TOTAL SHEETS	SHEET NO.	
et:\pw\work\p\pidot\personbr\d0312248\0570918-sh-typical.dgn	PLOT SCALE = 40.0000' / in.	DRAWN - DFJ	REVISED -			VAR	.	**	21	9	
PLOT DATE = 11/21/2013	DATE - 08/15/12	CHECKED -	REVISED -			CONTRACT NO. 70918					
		DATE -	REVISED -			ILLINOIS FED. AID PROJECT					

•FY2014 BRIDGE DECK SEALING
•DOUGLAS, EDGAR, & PIATT COUNTIES