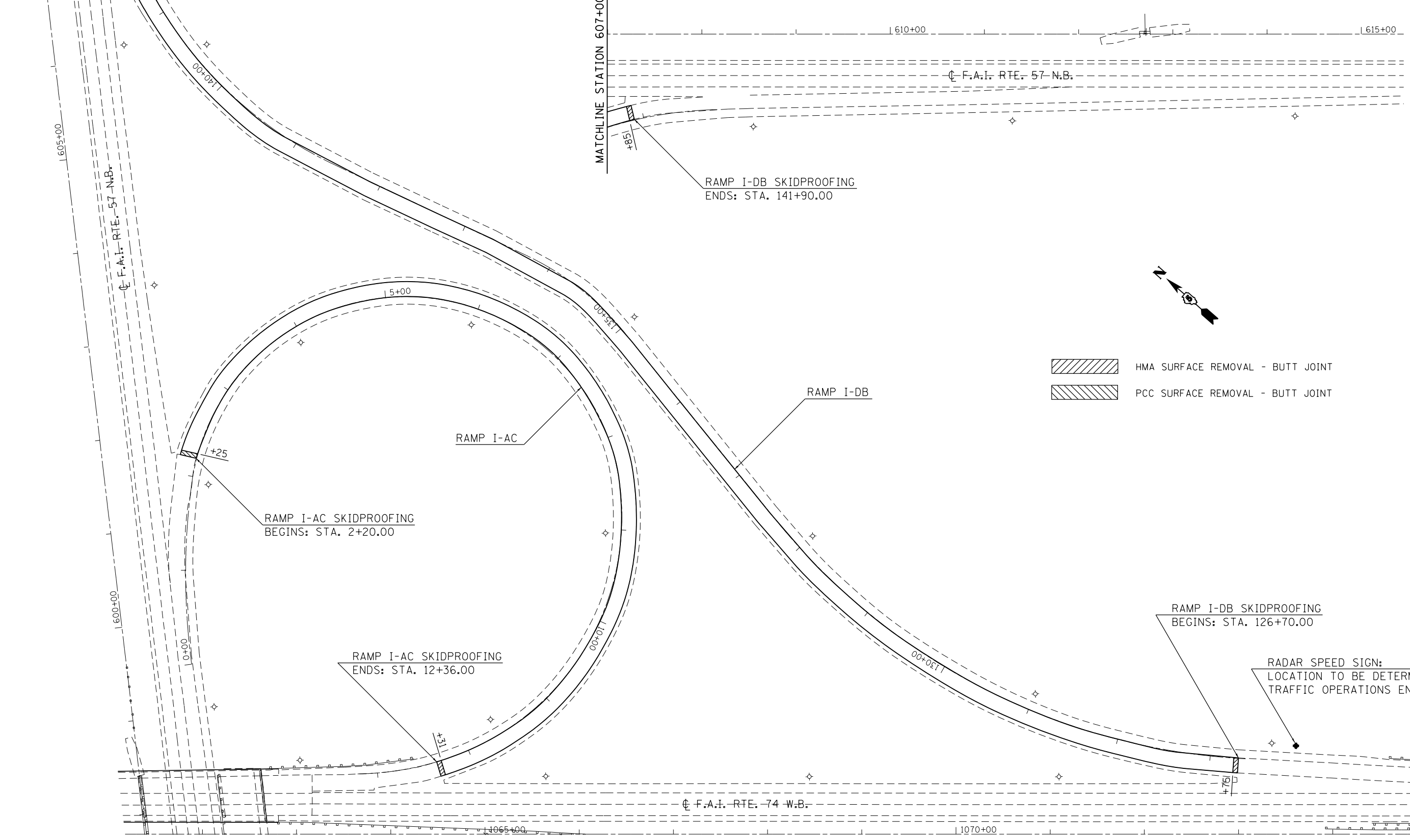


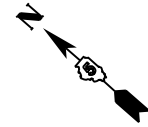


MATCHLINE STATION 607+00.00

MATCHLINE STATION 607+00.00



-  HMA SURFACE REMOVAL - BUTT JOINT
-  PCC SURFACE REMOVAL - BUTT JOINT



FILE NAME =	USER NAME = eaglinge	DESIGNED - GAE	REVISED -
et:\pw\work\p1dot\ea\linge\0363405\0570A52-sht-HFST.dgn		DRAWN - GAE	REVISED -
	PLOT SCALE = 100.0000' / in.	CHECKED -	REVISED -
MODELNAME	PLOT DATE = 12/6/2013	DATE -	REVISED -

**STATE OF ILLINOIS
DEPARTMENT OF TRANSPORTATION**

**PLAN SHEETS (HIGH FRICTION SURFACE TREATMENT)
RAMP I-DB & RAMP I-AC**

SCALE: SHEET 3 OF 4 SHEETS STA. TO STA.

F.A.I. RTE.	SECTION	COUNTY	TOTAL SHEETS	SHEET NO.
57	HFSC 2014-1	CHAMPAIGN	31	17
CONTRACT NO. 70A52			ILLINOIS FED. AID PROJECT	