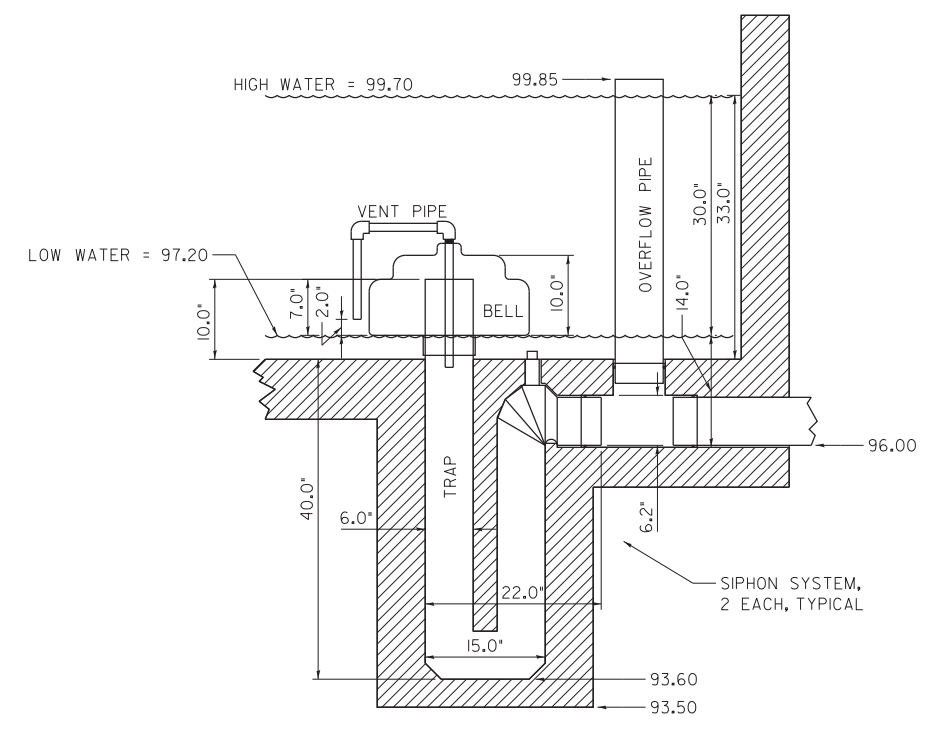


ALTERNATING DOSING SIPHON STRUCTURE
 No Scale

GENERAL NOTES FOR ALTERNATING DOSING SIPHON STRUCTURE AND SIPHON SYSTEM DETAILS:

1. ALTERNATING DOSING SIPHON STRUCTURE SHALL BE PAID AS SANITARY MANHOLE, SPECIAL, 1 EACH.
2. DUAL SIPHON SYSTEMS SHALL BE PAID AS SIPHON SYSTEM, 2 EACH.
3. PRE-CAST CONCRETE STRUCTURE SHALL BE CAST WITH AN APPROVED ANTI-CORROSION ADMIXTURE, SUCH AS XYPEX OR APPROVED EQUAL; OR THE STRUCTURES SHALL BE COATED WITH AN ANTI-CORROSION COATING, SUCH AS BY TNEC, SPECTRASHIELD OR OTHER APPROVED EQUAL.
4. THE CAST IN PLACE CONCRETE / GROUT FILL SHALL BE PAID AS A PART OF THE SANITARY MANHOLE, SPECIAL. THE CONCRETE SHALL INCLUDE THE SAME ANTI-CORROSION ADMIXTURE OR COATING REQUIREMENTS AS THE PRECAST STRUCTURE, AS IDENTIFIED IN NOTE 3, ABOVE.
5. UNLESS NOTED TO BE PAID UNDER A SEPARATE PAY ITEM, ALL ITEMS SHOWN AND IDENTIFIED SHALL BE INCLUDED IN THE COST OF THE COMPLETED SANITARY MANHOLE, SPECIAL.



SIPHON SYSTEM
 No Scale

FILE NAME = D570A53-sht-details3.dgn	USER NAME = TKee	DESIGNED - WWS	REVISED -	STATE OF ILLINOIS DEPARTMENT OF TRANSPORTATION	ALTERNATING DOSING SIPHON STRUCTURE DETAILS		F.A.I. RTE.	SECTION	COUNTY	TOTAL SHEETS	SHEET NO.		
Default	PLOT SCALE = 1.0000' / in.	DRAWN - TDK	REVISED -		SCALE: NTS	SHEET 1 OF 1 SHEETS	STA.	TO STA.	55	FUNKS GROVE RA IMP. 2014-	McLEAN	17	12
	PLOT DATE = 1/15/2014	CHECKED - BEP	REVISED -										
		DATE - 12-13-2013	REVISED -										
								ILLINOIS FED. AID PROJECT		CONTRACT NO. 70A53			