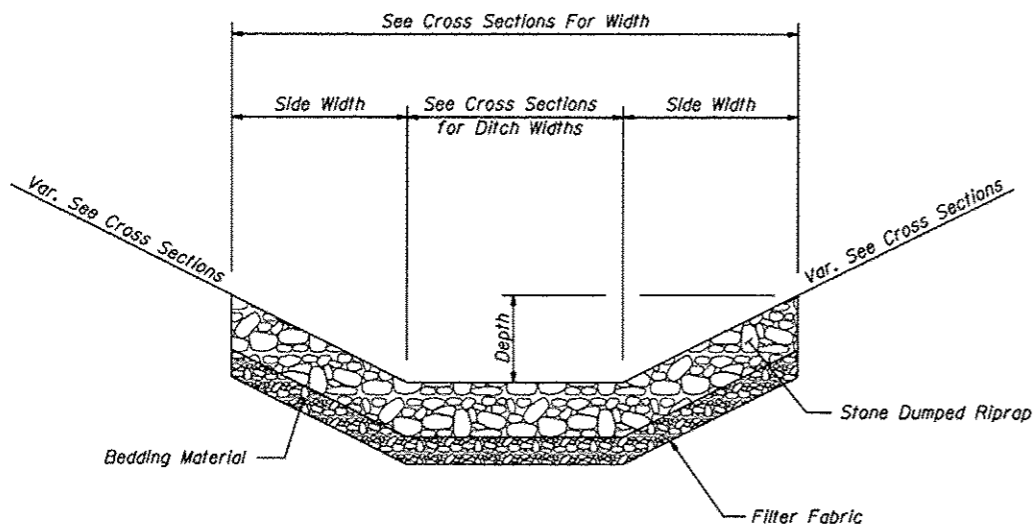


F.A.S. RTE.	SECTION	COUNTY	TOTAL SHEETS	SHEET NO.
1597	14 (W, RS-7)	ADAMS/PIKE	152	74
STA. 294 TO STA.				
FED. ROAD DIST. NO. ILLINOIS FED. AID PROJECT				



TYPICAL STONE RIPRAP - DITCH LINING

DEPTH	SIDE WIDTH	
	1:3 SLOPE	1:6 SLOPE
6"	1.5'	3.0'
12"	3.0'	6.0'
18"	4.5'	9.0'
24"	6.0'	12.0'

Note:
In Transitional Areas, Side Width Will Vary According to Side Slope

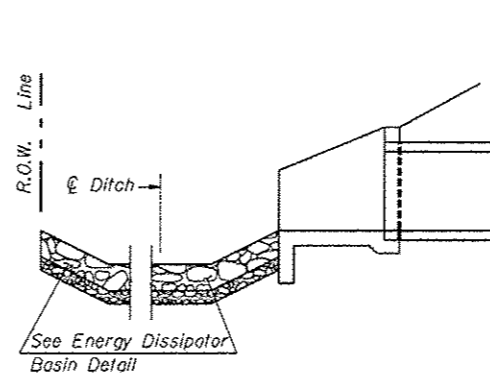
GRADATION	MIN. THICKNESS	BEDDING THICKNESS
RR3	12"	...
RR4	16"	6"
RR5	22"	8"
RR7	26"	10"

NOTES

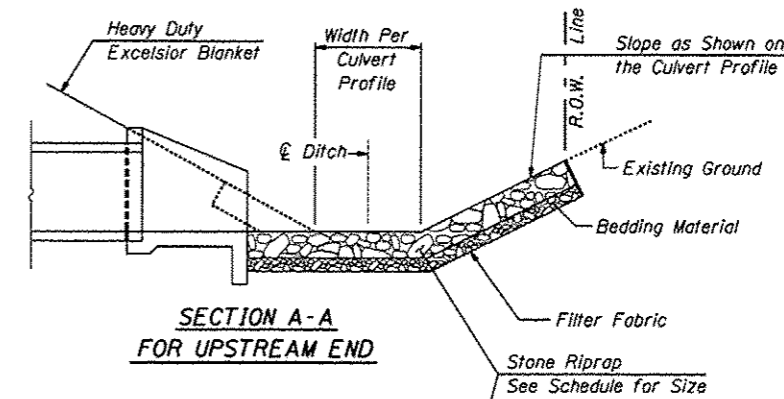
The Exact Length, Width and Depth for Riprap Placement will be Determined by the Engineer.

The Riprap Material shall Conform to Class A or Class B Quality.

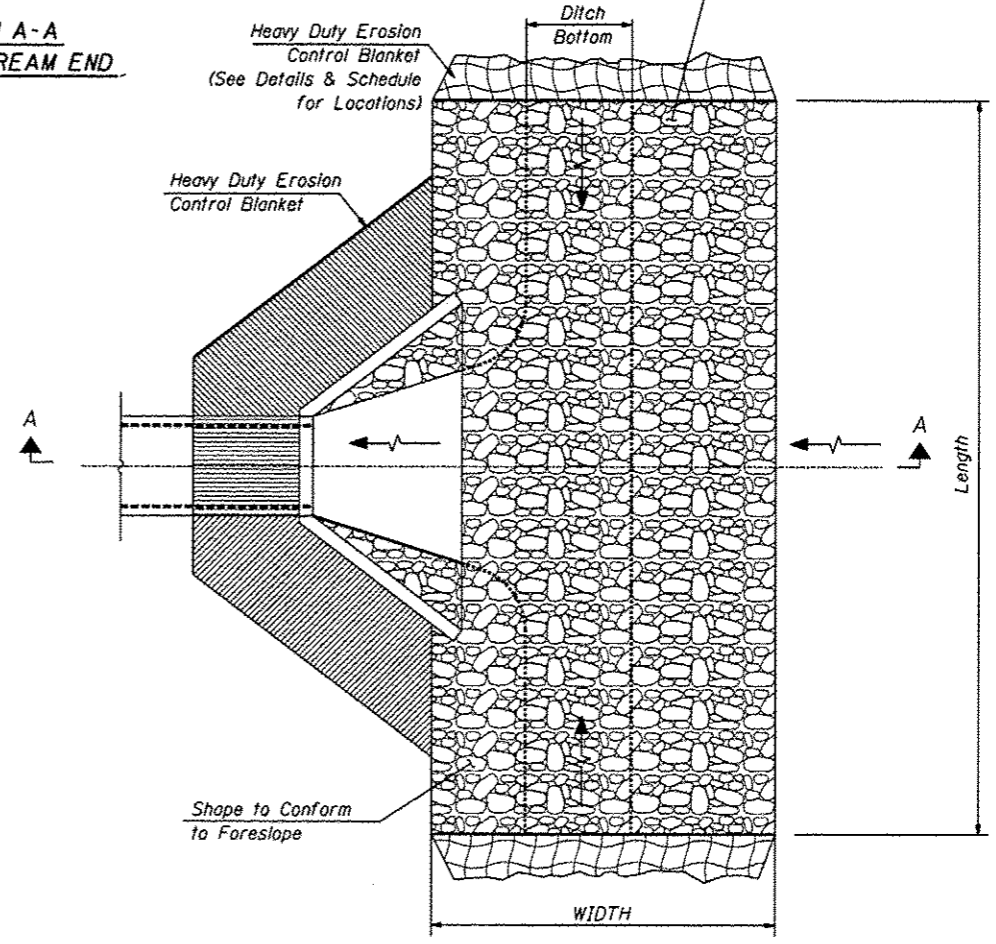
Filter Fabric will be Paid for at the Contract unit price Per Square Yard for Filter Fabric For Use With Riprap.



SECTION A-A FOR DOWNSTREAM END



SECTION A-A FOR UPSTREAM END



PLAN

RIPRAP AT INLET ENDS OF CULVERTS

REVISIONS	
NAME	DATE

ILLINOIS DEPARTMENT OF TRANSPORTATION

RIP RAP DETAILS

SCALE: VERT. HORIZ. DATE

DRAWN BY CHECKED BY

Z:\AR\2013\18-10-01312.IL-96 Pike Co to IL-57\ANSYS\Design\37-50-detailed.dgn 8/16/2013 4:01:01 PM