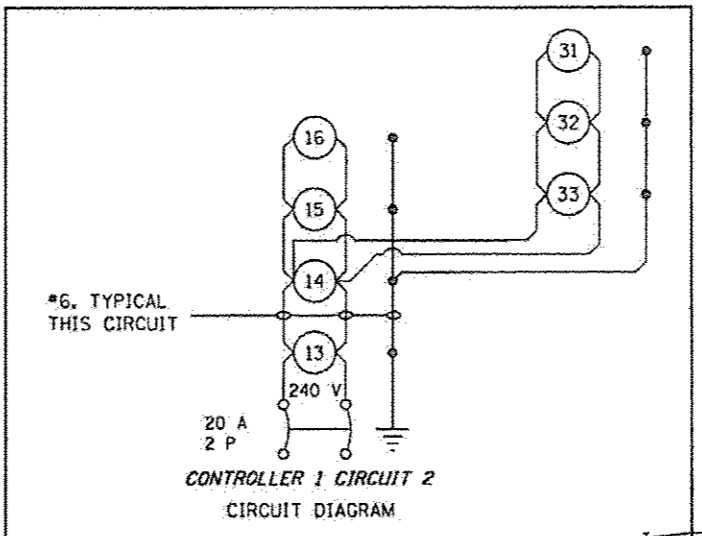
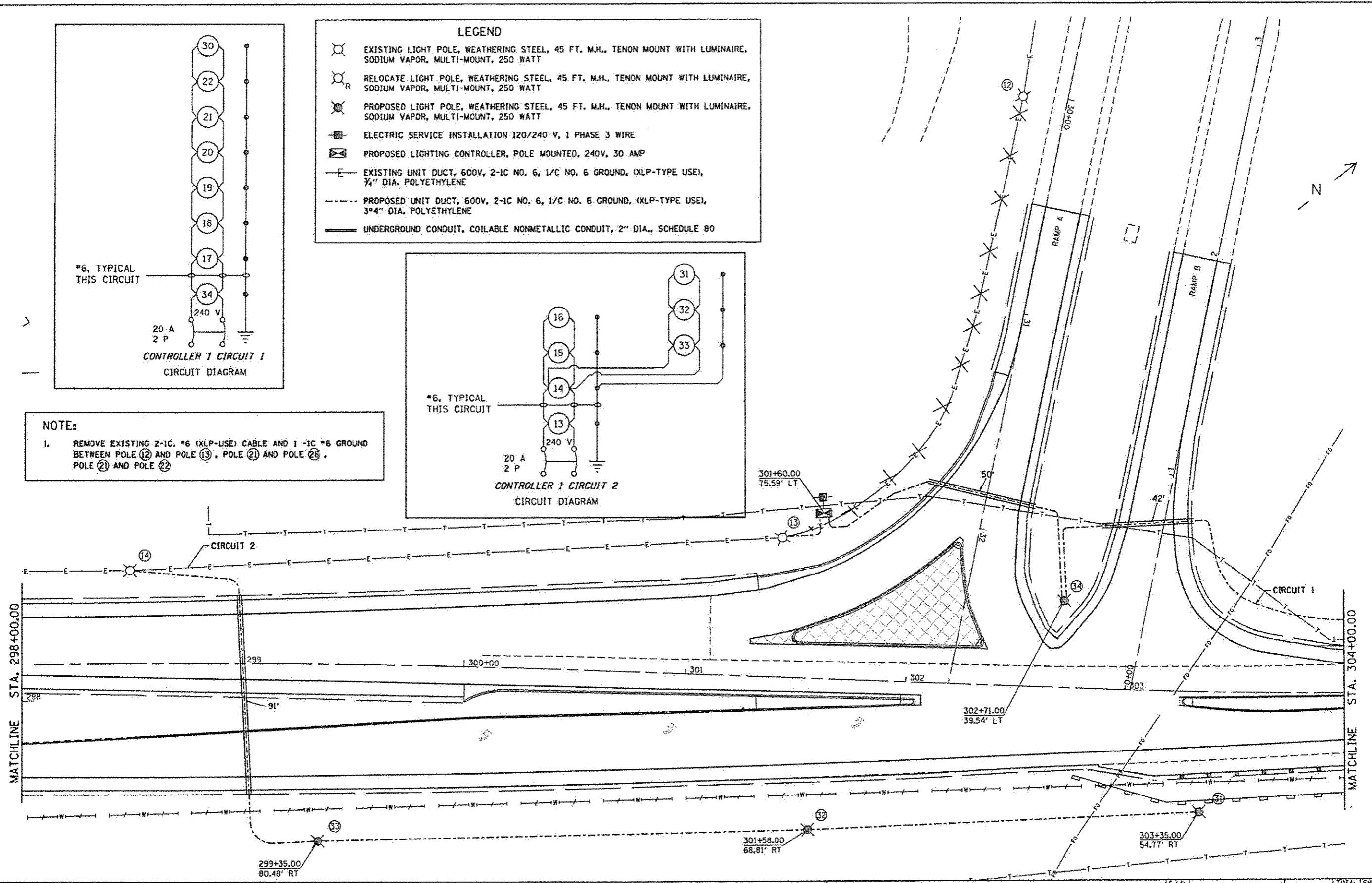


- LEGEND**
- EXISTING LIGHT POLE, WEATHERING STEEL, 45 FT. M.H., TENON MOUNT WITH LUMINAIRE, SODIUM VAPOR, MULTI-MOUNT, 250 WATT
 - RELOCATE LIGHT POLE, WEATHERING STEEL, 45 FT. M.H., TENON MOUNT WITH LUMINAIRE, SODIUM VAPOR, MULTI-MOUNT, 250 WATT
 - PROPOSED LIGHT POLE, WEATHERING STEEL, 45 FT. M.H., TENON MOUNT WITH LUMINAIRE, SODIUM VAPOR, MULTI-MOUNT, 250 WATT
 - ELECTRIC SERVICE INSTALLATION 120/240 V, 1 PHASE 3 WIRE
 - PROPOSED LIGHTING CONTROLLER, POLE MOUNTED, 240V, 30 AMP
 - EXISTING UNIT DUCT, 600V, 2-1C NO. 6, 1/C NO. 6 GROUND, (XLP-TYPE USE), 3/4" DIA. POLYETHYLENE
 - PROPOSED UNIT DUCT, 600V, 2-1C NO. 6, 1/C NO. 6 GROUND, (XLP-TYPE USE), 3/4" DIA. POLYETHYLENE
 - UNDERGROUND CONDUIT, COILABLE NONMETALLIC CONDUIT, 2" DIA., SCHEDULE 80



NOTE:

- REMOVE EXISTING 2-1C, #6 (XLP-USE) CABLE AND 1 -1C #6 GROUND BETWEEN POLE 12 AND POLE 13, POLE 21 AND POLE 28, POLE 21 AND POLE 22



FILE NAME	USER NAME	DESIGNED	REVISED	STATE OF ILLINOIS DEPARTMENT OF TRANSPORTATION	BUSINESS LOOP 55 PROPOSED LIGHTING PLAN			F.A.P. RTE.	SECTION	COUNTY	TOTAL SHEETS	SHEET NO.	
Default	126-3060101067	DRAWN	REVISED					666	126RS.1	SANGAMON	116	50	
	PLOT SCALE = 40.0000 1" = 100'	CHECKED	REVISED					SCALE: SHEET OF SHEETS STA. TO STA.			CONTRACT NO. 72F50		
	PLOT DATE = Dec-86-2013 8:57:25AM	DATE	REVISED					ILLINOIS FED. AID PROJECT					