

STATE OF ILLINOIS
DEPARTMENT OF TRANSPORTATION
DIVISION OF HIGHWAYS

**PROPOSED
HIGHWAY PLANS**

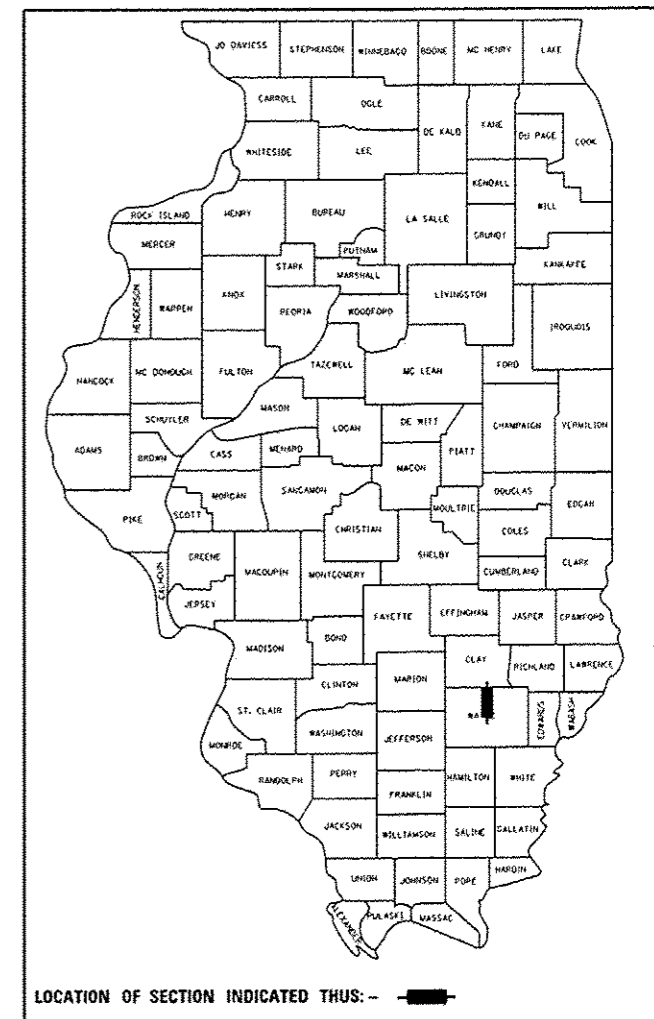
FAP ROUTE 328 (US 45)
SECTION (8,9,10)RS-2
PROJECT ACNHPP - 0328 (034)
HMA RESURFACING
WAYNE COUNTY

C-97-035-11

F.A.P. RTE.	SECTION	COUNTY	TOTAL SHEETS	SHEET NO.
328	(8,9,10)RS-2	Wayne	23*	1
ILLINOIS CONTRACT NO. 74512				

* 23+1 = 24 TOTAL SHEETS

D-97-012-11



FOR INDEX OF SHEETS, SEE SHEET NO. 2

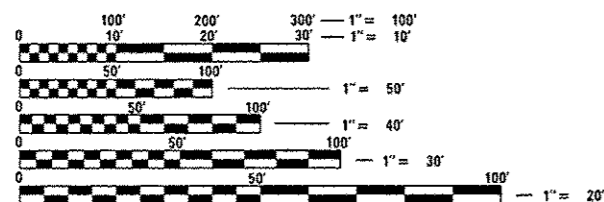
STATION EQUATIONS

STA 497+02.80 BK = STA 499+22.70 AH
STA 547+41.00 BK = STA 547+29.00 AH
STA 595+66.10 BK = STA 595+91.80 AH
STA 608+20.10 BK = STA 608+33.90 AH
STA 762+13.20 BK = STA 762+05.10 AH

BRIDGE OMISSIONS

SN 096-0068: STA 380+00 TO STA 388+74
SN 096-2010: STA 408+44 TO STA 411+30
SN 096-2012: STA 507+00 TO STA 508+16
SN 096-0020: STA 719+10 TO STA 719+94
SN 096-0019: STA 884+90 TO STA 892+30

ADT (2009) = 2,182

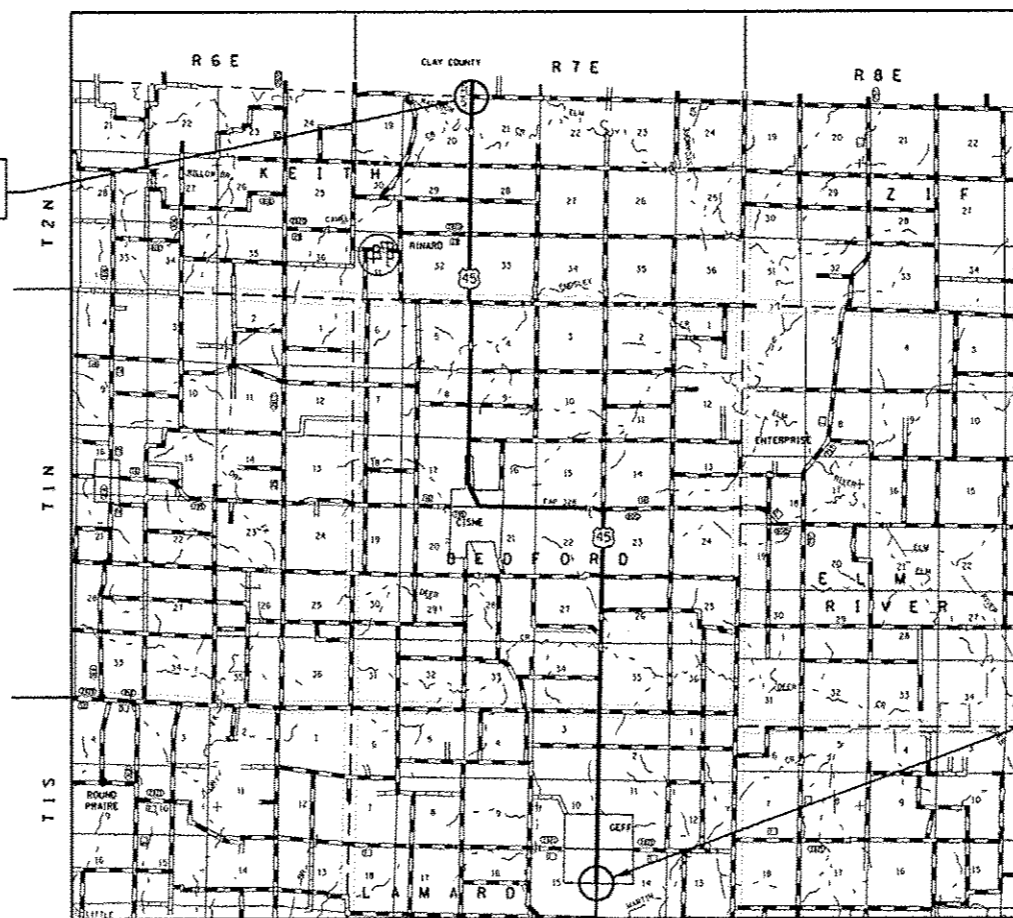


FULL SIZE PLANS HAVE BEEN PREPARED USING STANDARD ENGINEERING SCALES. REDUCED SIZED PLANS WILL NOT CONFORM TO STANDARD SCALES. IN MAKING MEASUREMENTS ON REDUCED PLANS, THE ABOVE SCALES MAY BE USED.

J.U.L.I.E.
JOINT UTILITY LOCATION INFORMATION FOR EXCAVATION
1-800-892-0123
OR 811

PROJECT ENGINEER: MARK DAUGHERTY
PROJECT MANAGER: BRIAN BIERMAN
PHONE: (217)-342-8341
CONTRACT NO. 74512

PROJECT ENDS
STA 915+44



PROJECT BEGINS
STA 213+50

GROSS LENGTH = 69,955 FT. = 13.25 MILE
NET LENGTH = 67,855 FT. = 12.85 MILE

STATE OF ILLINOIS
DEPARTMENT OF TRANSPORTATION
DIVISION OF HIGHWAYS

SUBMITTED DEC. 6 2013
Roger L. Dinschell
DEPUTY DIRECTOR OF HIGHWAYS, REGION ENGINEER

Jan 24 2014
John D. Baranzelli PE
acting ENGINEER OF DESIGN AND ENVIRONMENT

Jan 24 2014
Omer Osman PE
DIRECTOR OF HIGHWAYS, CHIEF ENGINEER

PRINTED BY THE AUTHORITY
OF THE STATE OF ILLINOIS