

STATE OF ILLINOIS
DEPARTMENT OF TRANSPORTATION
DIVISION OF HIGHWAYS

**PROPOSED
HIGHWAY PLANS**

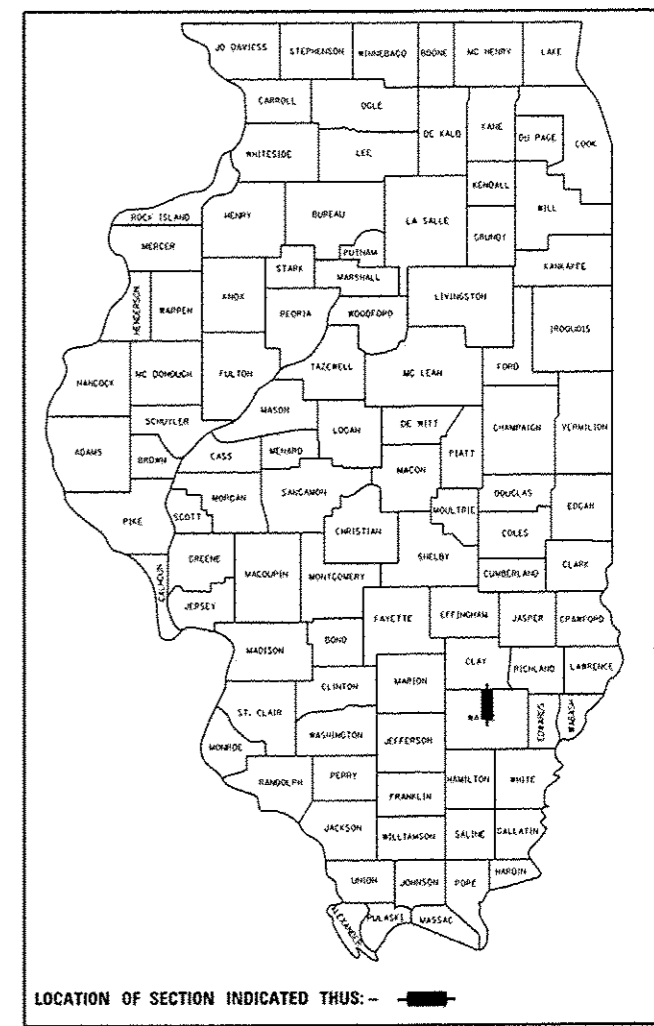
FAP ROUTE 328 (US 45)
SECTION (8,9,10)RS-2
PROJECT ACNHPP - 0328 (034)
HMA RESURFACING
WAYNE COUNTY

C-97-035-11

F.A.P. RTE.	SECTION	COUNTY	TOTAL SHEETS	SHEET NO.
328	(8,9,10)RS-2	Wayne	23*	1
ILLINOIS CONTRACT NO. 74512				

* 23+1 = 24 TOTAL SHEETS

D-97-012-11



FOR INDEX OF SHEETS, SEE SHEET NO. 2

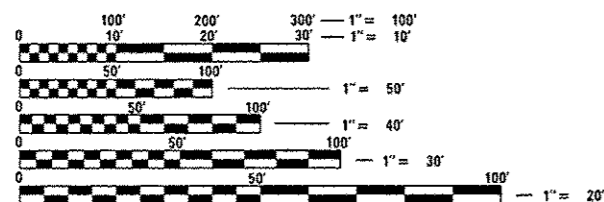
STATION EQUATIONS

STA 497+02.80 BK = STA 499+22.70 AH
STA 547+41.00 BK = STA 547+29.00 AH
STA 595+66.10 BK = STA 595+91.80 AH
STA 608+20.10 BK = STA 608+33.90 AH
STA 762+13.20 BK = STA 762+05.10 AH

BRIDGE OMISSIONS

SN 096-0068: STA 380+00 TO STA 388+74
SN 096-2010: STA 408+44 TO STA 411+30
SN 096-2012: STA 507+00 TO STA 508+16
SN 096-0020: STA 719+10 TO STA 719+94
SN 096-0019: STA 884+90 TO STA 892+30

ADT (2009) = 2,182

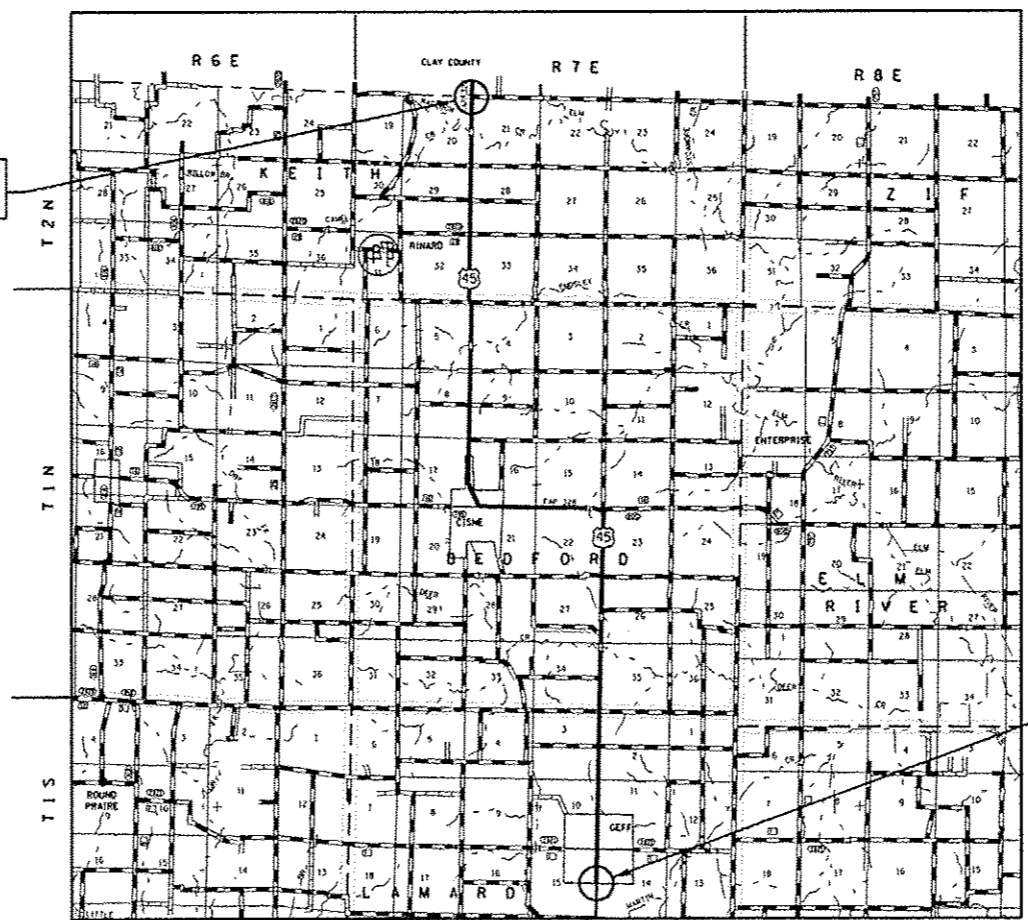


FULL SIZE PLANS HAVE BEEN PREPARED USING STANDARD ENGINEERING SCALES. REDUCED SIZED PLANS WILL NOT CONFORM TO STANDARD SCALES. IN MAKING MEASUREMENTS ON REDUCED PLANS, THE ABOVE SCALES MAY BE USED.

J.U.L.I.E.
JOINT UTILITY LOCATION INFORMATION FOR EXCAVATION
1-800-892-0123
OR 811

PROJECT ENGINEER: MARK DAUGHERTY
PROJECT MANAGER: BRIAN BIERMAN
PHONE: (217)-342-8341
CONTRACT NO. 74512

PROJECT ENDS
STA 915+44



PROJECT BEGINS
STA 213+50

GROSS LENGTH = 69,955 FT. = 13.25 MILE
NET LENGTH = 67,855 FT. = 12.85 MILE



STATE OF ILLINOIS
DEPARTMENT OF TRANSPORTATION
DIVISION OF HIGHWAYS

SUBMITTED DEC. 6 2013
Roger L. Dinschell
DEPUTY DIRECTOR OF HIGHWAYS, REGION ENGINEER

Jan 24 2014
John D. Baranzelli PE
acting ENGINEER OF DESIGN AND ENVIRONMENT

Jan 24 2014
Omer Osman PE
DIRECTOR OF HIGHWAYS, CHIEF ENGINEER

**PRINTED BY THE AUTHORITY
OF THE STATE OF ILLINOIS**

GENERAL NOTES

SHORT-TERM PAVEMENT MARKING SHALL BE APPLIED AS FOLLOWS:
TEMPORARY TAPE SHALL BE USED ON THE SURFACE COURSE AND PAINT SHALL BE USED ON THE MILLED SURFACE.

THE TOTAL QUANTITY OF PAINT PAVEMENT MARKING - LINE 4" CONSISTS OF 40,583 FEET OF YELLOW AND 133,288 FEET OF WHITE. THE TOTAL QUANTITY OF PREFORMED PLASTIC PAVEMENT MARKING, TYPE B - LINE 6" CONSISTS OF 50 FEET OF WHITE AND IS FOR THE CROSS-WALK AT LAFAYETTE STREET IN GEFF.

RAISED REFLECTIVE PAVEMENT MARKERS SHALL CONSIST OF 848 TWO-WAY AMBER MARKERS AND 123 ONE-WAY CRYSTAL MARKERS. ONE-WAY CRYSTAL MARKERS SHALL BE PLACED IN EACH LANE AND SPACED EVERY 40' JUST INSIDE THE WHITE EDGE LINE ON EACH CURVE. THE ONE-WAY CRYSTAL MARKER LIMITS SHALL BE THE P.C. AND P.T. OF EACH CURVE.

THE CONTRACTOR SHALL PROVIDE INTERNET ACCESS TO THE HOT-MIX ASPHALT PLANT QUALITY CONTROL LAB SO THAT HOT-MIX ASPHALT PLANT REPORTS CAN BE E-MAILED TO THE DISTRICT HEADQUARTERS. THIS WORK SHALL BE INCLUDED IN THE COST OF ALL HOT-MIX ASPHALT ITEMS.

THE CONTRACTOR SHALL USE EITHER RC-70 OR AN EMULSIFIED POLYMER PRIME SS-1HP OR SS-1H FOR THE PAY ITEM BITUMINOUS MATERIALS (PRIME COAT).

THE HMA PAY FOR PERFORMANCE SPECIAL PROVISION SHALL APPLY TO HMA SURFACE COURSE.

AGGREGATE WEDGE SHOULDER, TYPE B SHALL BE CRUSHED STONE, CRUSHED CONCRETE OR RAP. AGGREGATE SURFACE COURSE, TYPE B SHALL BE CRUSHED STONE OR CRUSHED CONCRETE. RAP SHALL NOT BE USED AS AGGREGATE WEDGE SHOULDER, TYPE B WITHIN THE VILLAGE LIMITS OF GEFF AND CISNE.

THE PAY ITEM TEMPORARY RAMP HAS BEEN INCLUDED FOR THE CONSTRUCTION OF TEMPORARY RAMPS IN ACCORDANCE WITH ARTICLE 406.08 OF THE STANDARD SPECIFICATIONS. THE CONTRACT UNIT PRICE PER SQUARE YARD FOR TEMPORARY RAMP SHALL INCLUDE BOTH THE INSTALLATION AND THE REMOVAL OF THE RAMPS.

THE FOLLOWING MIXTURE REQUIREMENTS ARE APPLICABLE TO THIS PROJECT:

APPLICATION	AC/PG	DESIGN AIR VOIDS	MIXTURE COMPOSITION	FRICTION AGGREGATE
SURFACE COURSE	PG 64-22	4.0% @ N=70	IL - 9.5	MIXTURE C
INCIDENTAL SURFACE	PG 64-22	4.0% @ N=70	IL - 9.5	MIXTURE C
PAVEMENT PATCHING	PG 64-22	4.0% @ N=70	IL - 19.0	N/A

INDEX OF SHEETS

SHEET NO	TITLE
1	COVER SHEET
2	GENERAL NOTES, INDEX OF SHEETS, LIST OF STANDARDS
3-4	SUMMARY OF QUANTITIES
5	TYPICAL SECTIONS
6-7	SCHEDULES
* 8	PAVING DETAILS
9-11	ENTRANCE SCHEDULE
12-23	PLAN SHEETS



*** ADD SHEET 08 SURVEY MARKER DETAIL**

THE FOLLOWING STANDARDS ARE A PART OF THESE PLANS AND ARE INCLUDED FOLLOWING THE LAST NUMBERED SHEET OF THE PLANS.

STD. NO.	DESCRIPTION
000001-06	STANDARD SYMBOLS, ABBREVIATIONS AND PATTERNS
001006	DECIMAL OF AN INCH AND OF A FOOT
442201-03	CLASS C AND D PATCHES
701006-05	OFF-RD OPERATIONS, 2L, 2W, 15' TO 24" FROM PAVEMENT EDGE
701011-04	OFF-RD MOVING OPERATIONS, 2L, 2W, DAY ONLY
701201-04	LANE CLOSURE, 2L, 2W, DAY ONLY, FOR SPEEDS >= 45 MPH
701301-04	LANE CLOSURE, 2L, 2W, SHORT TIME OPERATIONS
701306-03	LANE CLOSURE, 2L, 2W, SLOW MOVING OPERATIONS DAY ONLY, FOR SPEEDS >= 45 MPH
701311-03	LANE CLOSURE, 2L, 2W MOVING OPERATIONS-DAY ONLY
701336-06	LANE CLOSURE, 2L, 2W, WORK AREAS IN SERIES, FOR SPEEDS >= 45 MPH
701901-03	TRAFFIC CONTROL DEVICES
780001-04	TYPICAL PAVEMENT MARKINGS
781001-03	TYPICAL APPLICATIONS RAISED REFLECTIVE PAVEMENT MARKERS



667101-02 PERMANENT SURVEY MARKERS

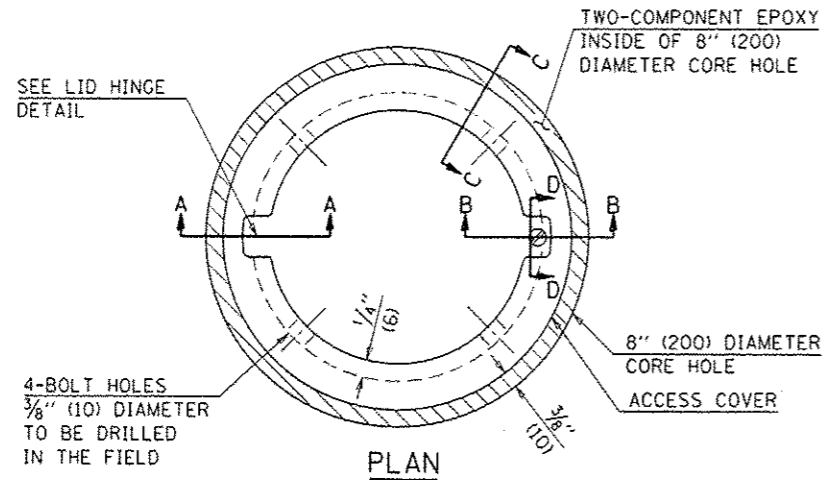
2-18-14

FILE NAME =	USER NAME = staffennk	DESIGNED -	REVISED -	STATE OF ILLINOIS DEPARTMENT OF TRANSPORTATION	GENERAL NOTES & INDEX OF SHEETS	F.A.P. RTE.	SECTION	COUNTY	TOTAL SHEETS	SHEET NO.
74512-sht-gennote.dgn	DRAWN -	REVISED -	328			18,9,10IRS-2	Wayne	23	2	
PLOT SCALE = 1/8" = 1' / in.	CHECKED -	REVISED -	CONTRACT NO. 74512							
PLOT DATE = 12/9/2013	DATE -	REVISED -	ILLINOIS FED. AID PROJECT							
				SCALE: NA		SHEET NO. 1 OF 1 SHEETS		STA. TO STA.		

SUMMARY OF QUANTITIES			TOTAL QUANTITIES	CONSTRUCTION TYPE CODE		
CODE NO	ITEM	UNIT		0005 00% FED 20% ST		
Z0049799	PROTECTING OR RESETTING SURVEY MARKERS	EACH	35	35		
Z0070202	SURVEY MARKER VAULT	EACH	13	13		



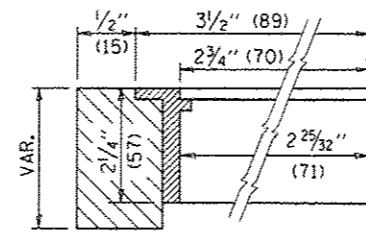
2-18-14



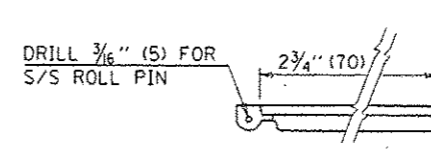
LEGEND

- ALUMINUM CASTING
- 5" (125) OR 6" (150) P.V.C. PIPE
- TWO-COMPONENT EPOXY

T = THICKNESS OF PAVEMENT STRUCTURE
 H = THE THICKNESS OF THE SUB-BASE GRANULAR + 1" (25)

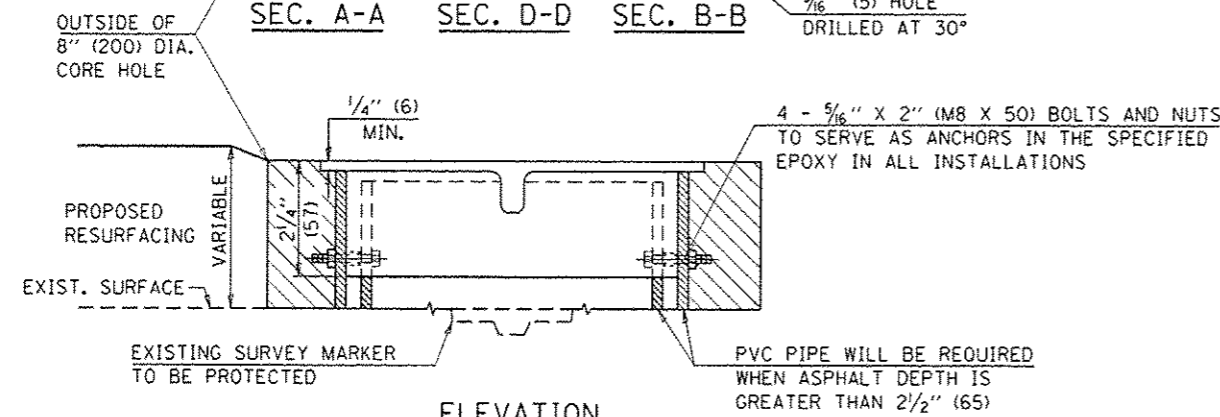
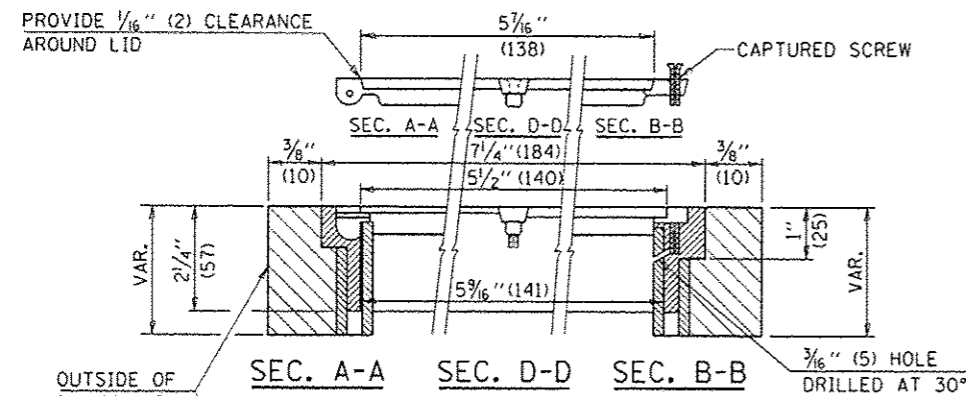


SECTION C-C



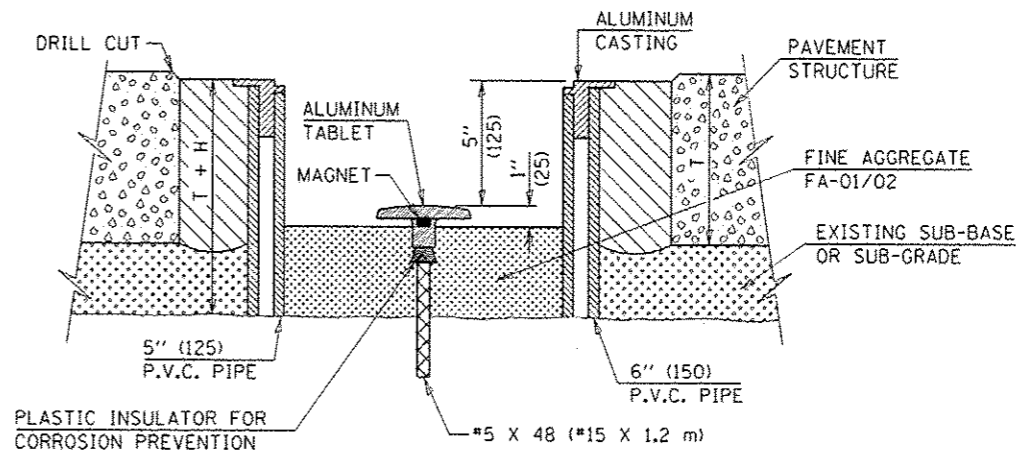
LID HINGE DETAIL

BILL OF MATERIAL	
ALUMINUM CASTING OF THE DIMENSIONS AND SPECIFICATIONS SHOWN OR OTHER SUBJECT TO ENGINEER'S APPROVAL OF SHOP DRAWINGS,	
4 EACH - 5/16" X 2" (M8 X 50) BOLTS WITH NUTS, EPOXY,	
5" OR 6" (125 mm OR 150 mm) DIAMETER P.V.C. PIPE, SCHEDULE 40 (WHEN REQUIRED).	



ELEVATION

EXISTING SURVEY MARKER



ELEVATION

PROPOSED SURVEY MARKER

NOT TO SCALE

Note: All dimensions are in INCHES (millimeters) unless otherwise shown.

⚠ SHEET ADDED 2-18-14

FILE NAME -	USER NAME - teasleych	DESIGNED -	REVISED - MAD 6-11
c:\pwork\pwork\teasleych\20249366\07	*512-survey\details.dgn	DRAWN -	REVISED -
	PLOT SCALE - 100.0000' / in.	CHECKED -	REVISED -
	PLOT DATE - 2/13/2014	DATE -	REVISED -

**STATE OF ILLINOIS
 DEPARTMENT OF TRANSPORTATION**

SURVEY MARKER VAULT

SCALE:	SHEET NO.	OF	SHEETS	STA.	TO STA.
--------	-----------	----	--------	------	---------

DISTRICT 7 DETAIL NO. Z0070202

F.A. RTE.	SECTION	COUNTY	TOTAL SHEETS	SHEET NO.
328	(8,9,10)RS-2	Wayne	23	88
CONTRACT NO.				
FED. ROAD DIST. NO. ILLINOIS FED. AID PROJECT				