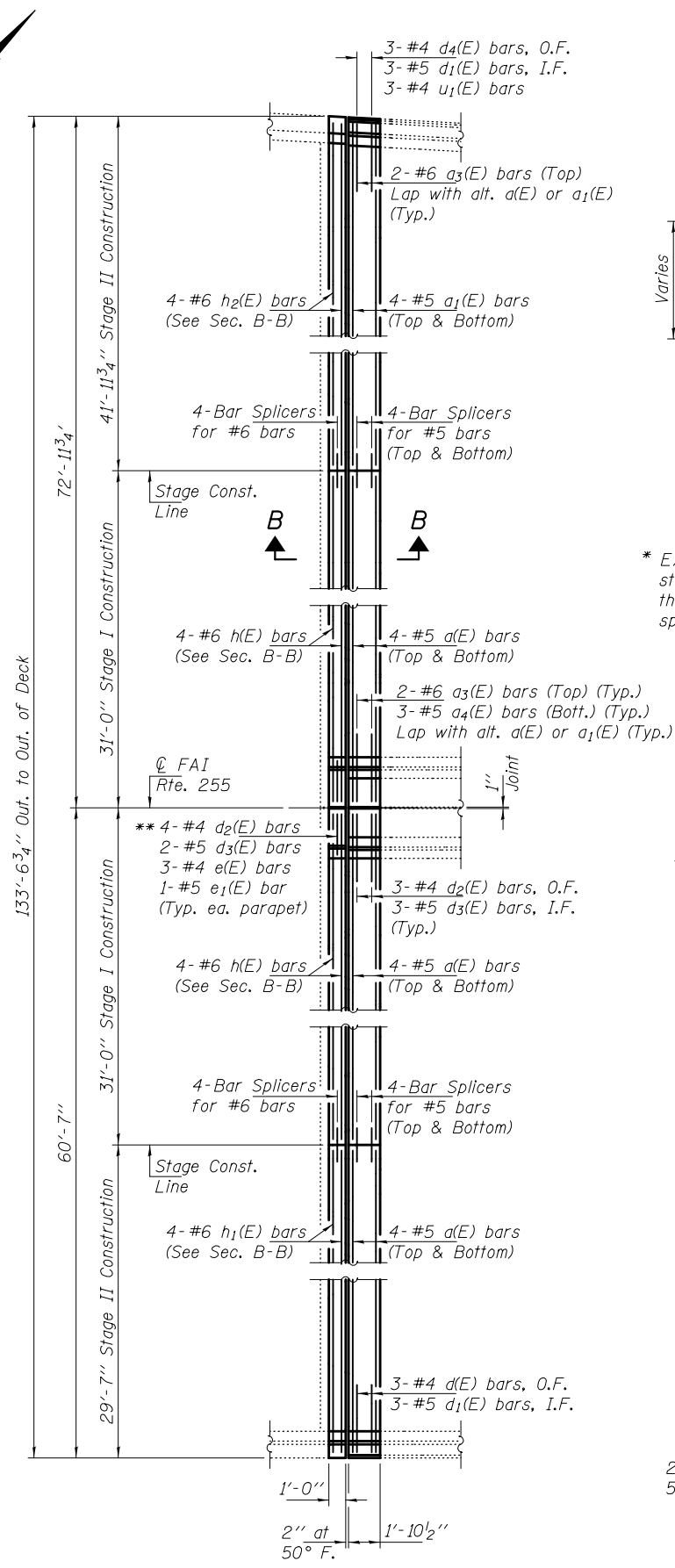
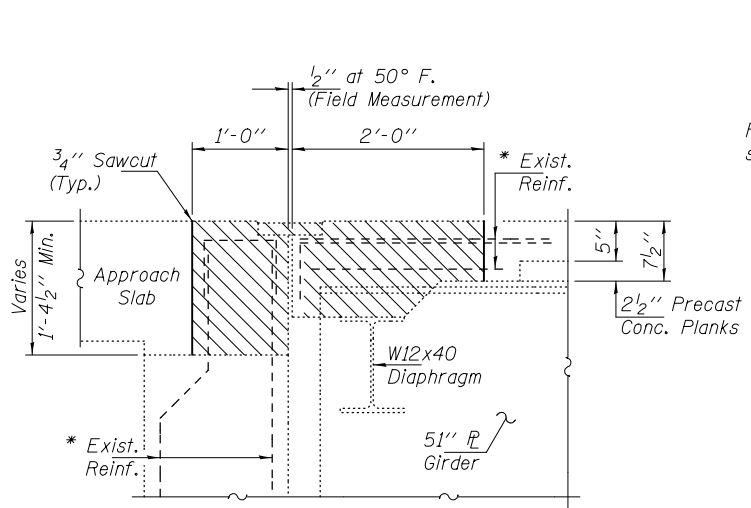


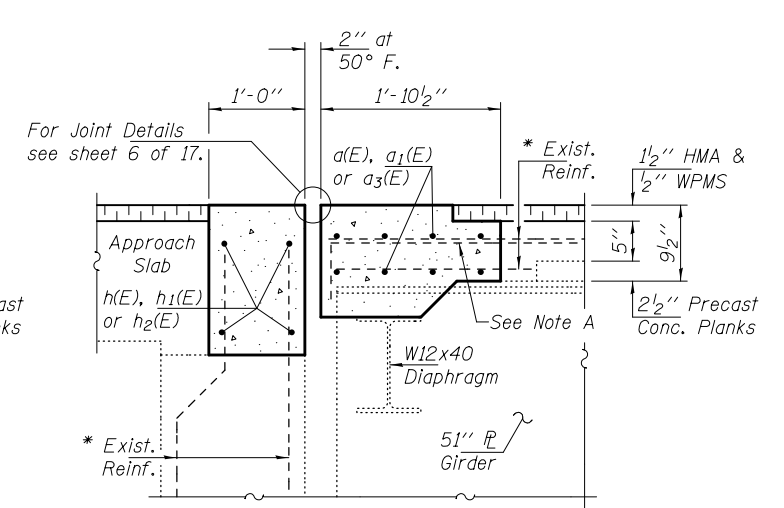
CONCRETE REMOVAL AT S. ABUT.



CONCRETE REPLACEMENT AT S. ABUT.



SECTION A-A

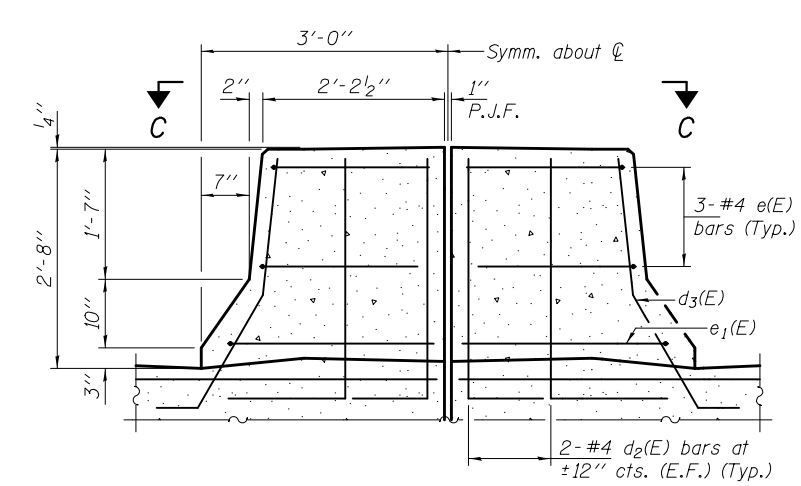


SECTION B-B

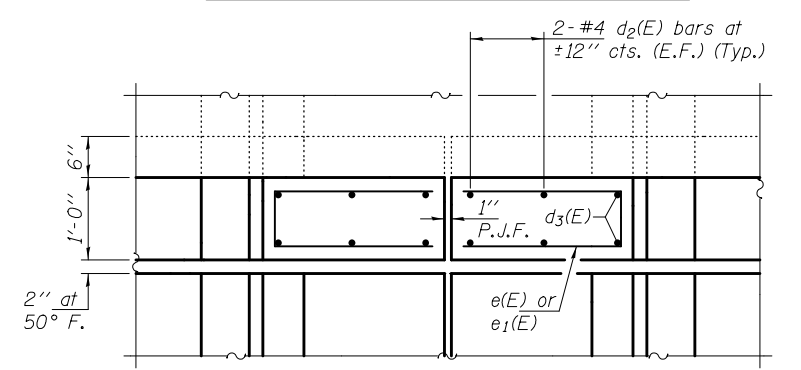
\* Existing reinforcement bars extending into the removal area shall be cleaned, straightened and incorporated into the new construction. Any reinforcement bars that are damaged during concrete removal shall be replaced with an approved bar splicer or anchorage system. Cost included with Concrete Removal.

Note A: Straighten, bend and cut existing x(E) bar as necessary to provide 1" clearance.

\*\* See Section thru Abutment Median & View C-C for details.



SECTION THRU ABUTMENT MEDIAN



VIEW C-C

Bridge Deck Reinforcement not shown for clarity.

Notes:  
Hatched areas indicate concrete removal.  
For Reinforcement Details and Parapet Details see sheet 14 of 17.  
Removal of existing joint is included with Concrete Removal.

BILL OF MATERIAL (S. ABUT.)

Bar	No.	Size	Length	Shape
a(E)	24	#5	28'-6"	—
a <sub>1</sub> (E)	8	#5	40'-10"	—
a <sub>3</sub> (E)	8	#6	4'-0"	—
a <sub>4</sub> (E)	6	#5	4'-0"	—
h(E)	8	#6	30'-8"	—
h <sub>1</sub> (E)	4	#6	29'-0"	—
h <sub>2</sub> (E)	4	#6	41'-6"	—
d(E)	3	#4	5'-7"	L
d <sub>1</sub> (E)	6	#5	3'-11"	L
d <sub>2</sub> (E)	14	#4	4'-4"	L
d <sub>3</sub> (E)	10	#5	3'-9"	L
d <sub>4</sub> (E)	3	#4	3'-10"	L
e(E)	6	#4	4'-6"	□
e <sub>1</sub> (E)	2	#5	5'-8"	□
u <sub>1</sub> (E)	3	#4	3'-0"	∩
Concrete Removal			Cu. Yd.	22.8
Concrete Superstructure			Cu. Yd.	22.0
Bar Splicers			Each	24
Reinforcement Bars, Epoxy Coated			Pound	2080

DESIGNED ATH	EXAMINED <i>Timothy A. ...</i>	DATE JANUARY 22, 2014
CHECKED VHV	PASSED <i>...</i>	REVISED
DRAWN Steffen	ACTING ENGINEER OF BRIDGES AND STRUCTURES	REVISED
CHECKED ATH VHV		

STATE OF ILLINOIS  
DEPARTMENT OF TRANSPORTATION

SOUTH ABUTMENT JOINT REMOVAL & REPLACEMENT DETAILS  
SN 082-0227

SHEET NO. 5 OF 17 SHEETS

F.A.I. RTE. 255	SECTION 82-4HVB-1	COUNTY ST. CLAIR	TOTAL SHEETS 46	SHEET NO. 27
CONTRACT NO. 76D51			ILLINOIS FED. AID PROJECT	