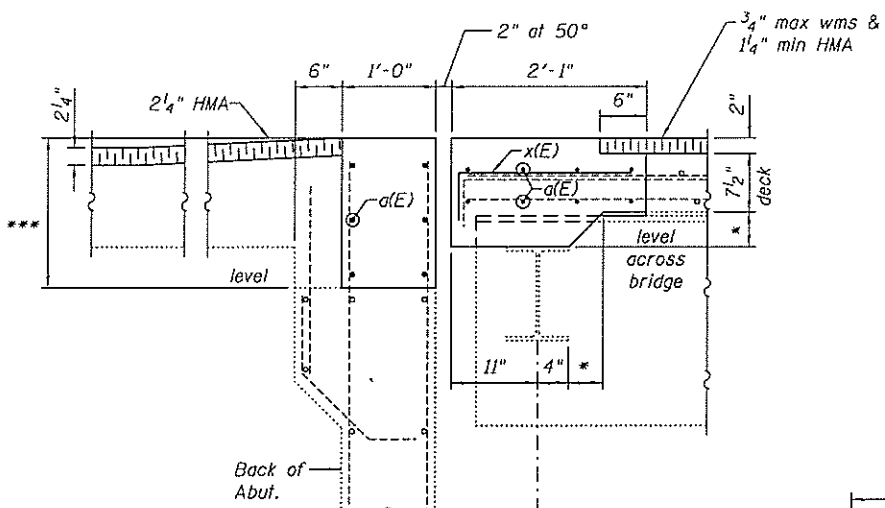
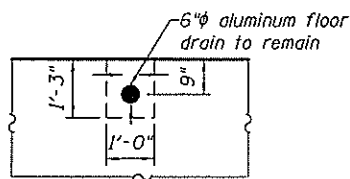


SECTION A-A
At right L's to abutment

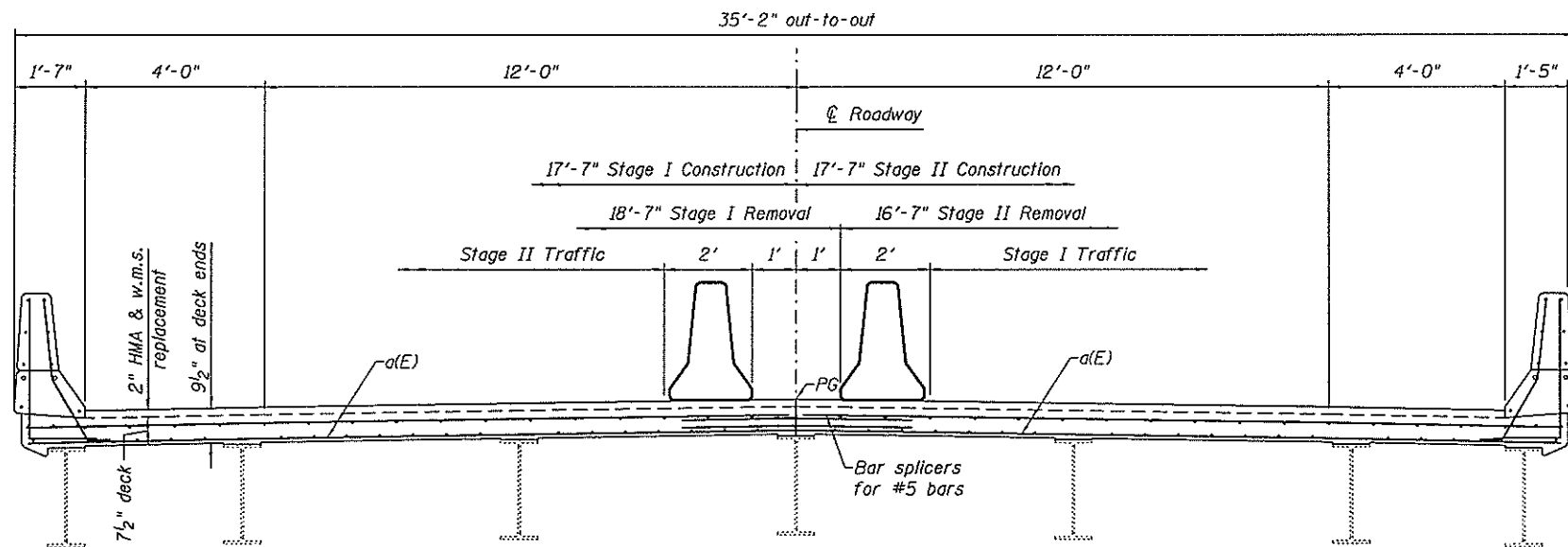


SECTION B-B
At right L's to abutment

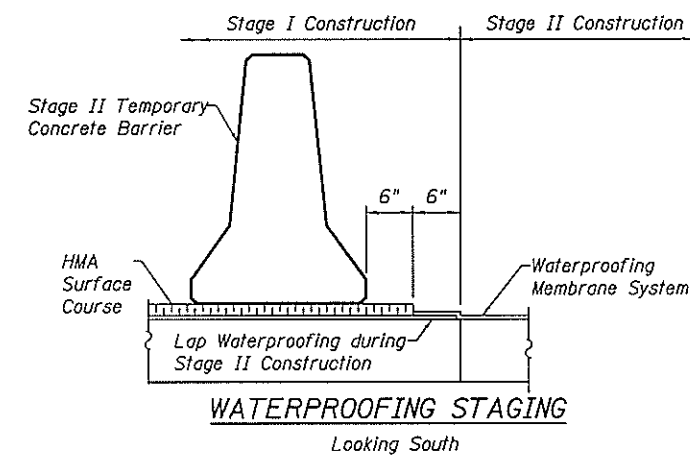
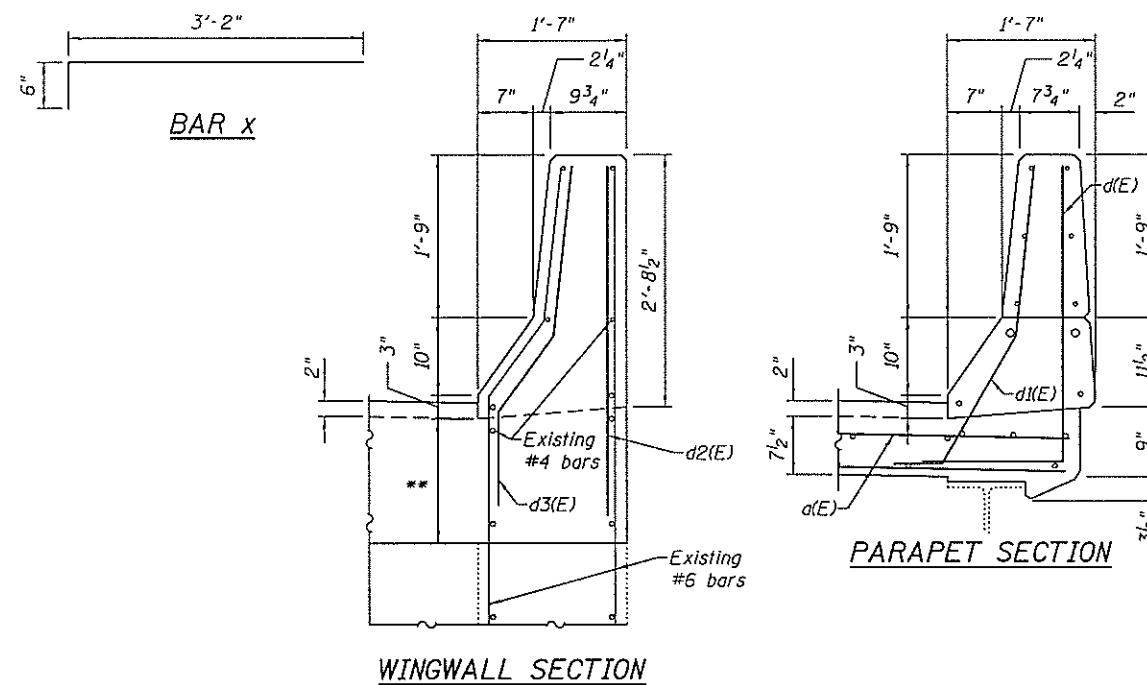
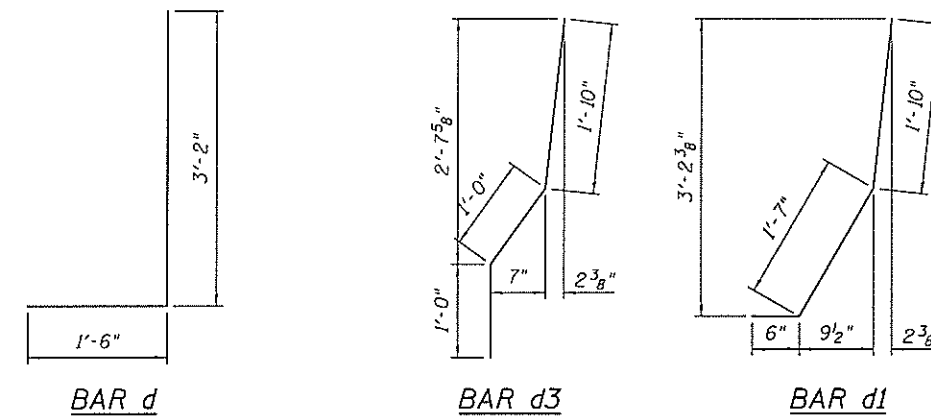
- * N. Abut varies 4 1/4" (Bm1) to 10" (Bm 4) to 9 1/4" (Bm 7)
S. Abut varies 4 1/4" (Bm1) to 8 3/4" (Bm 4) to 7" (Bm 7)
- ** N. Abut varies 21" (W gutter) to 21 3/4" (E) to 16" (E gutter)
S. Abut varies 18 1/2" (W gutter) to 20" (E) to 16" (E gutter)
- *** N. Abut varies 23" (W gutter) to 23 3/4" (E) to 18" (E gutter)
S. Abut varies 20 1/2" (W gutter) to 22" (E) to 18" (E gutter)



DRAIN DETAIL
Slope to drain with 1" minimum HMA at drains



DECK CROSS SECTION
Looking South



BOTH ABUTMENTS
BILL OF MATERIAL

Bar	No.	Size	Length	Shape	
d(E)	56	#5	33'-0"	—	
d(E)	20	#5	4'-8"	J	
d1(E)	20	#5	3'-11"	J	
d2(E)	12	#5	3'-9"	—	
d3(E)	12	#5	3'-10"	J	
x(E)	68	#5	3'-8"	—	
Reinforcement Bars, Epoxy Coated				Pound	2460
Concrete Superstructure				Cu. Yds.	25.7
Concrete Removal				Cu. Yds.	23.4

DESIGNED - J. Uehle
CHECKED - S. Ryan
DRAWN - J. Uehle
CHECKED - S. Ryan

EXAMINED
ENGINEER OF STRUCTURAL SERVICES
PASSED
ENGINEER OF BRIDGES AND STRUCTURES

DATE - 2/28/14
REVISED
REVISED

STATE OF ILLINOIS
DEPARTMENT OF TRANSPORTATION

CONCRETE REPLACEMENT AT ABUTMENTS
SN 060-0129

SHEET NO. 3 OF 6 SHEETS

F.A.P. SECTION COUNTY TOTAL SHEETS SHEET NO.
604 (103,125)RS-2, 125-BR-2 MADISON 46 33
CONTRACT NO. 76G25
ILLINOIS FED. AID PROJECT