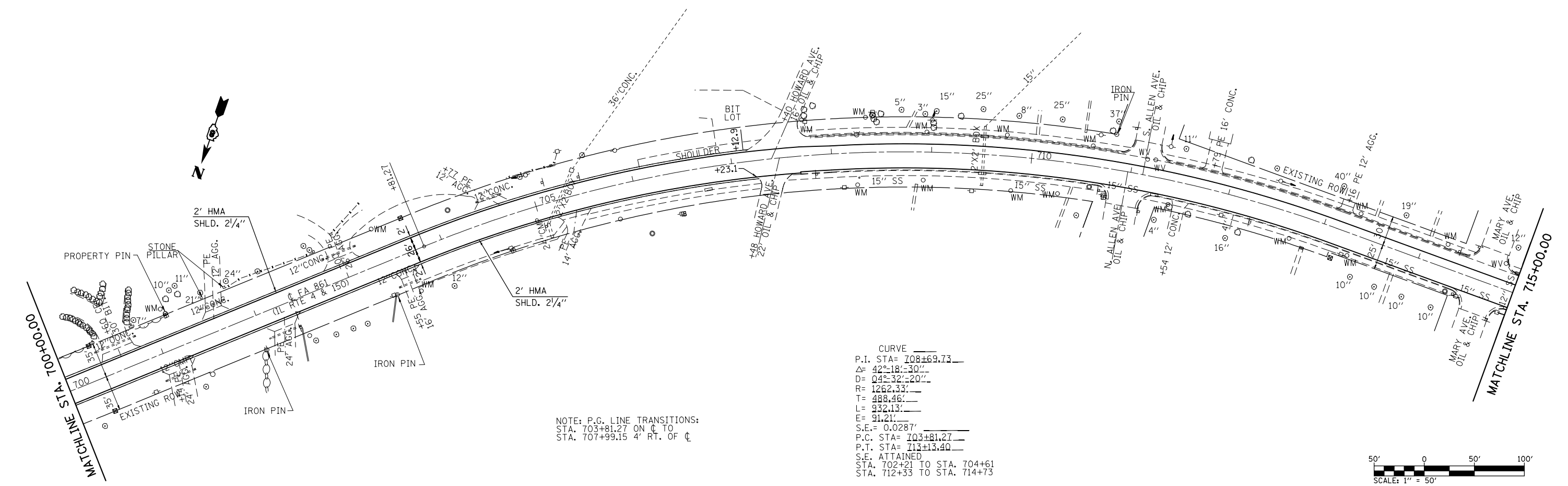
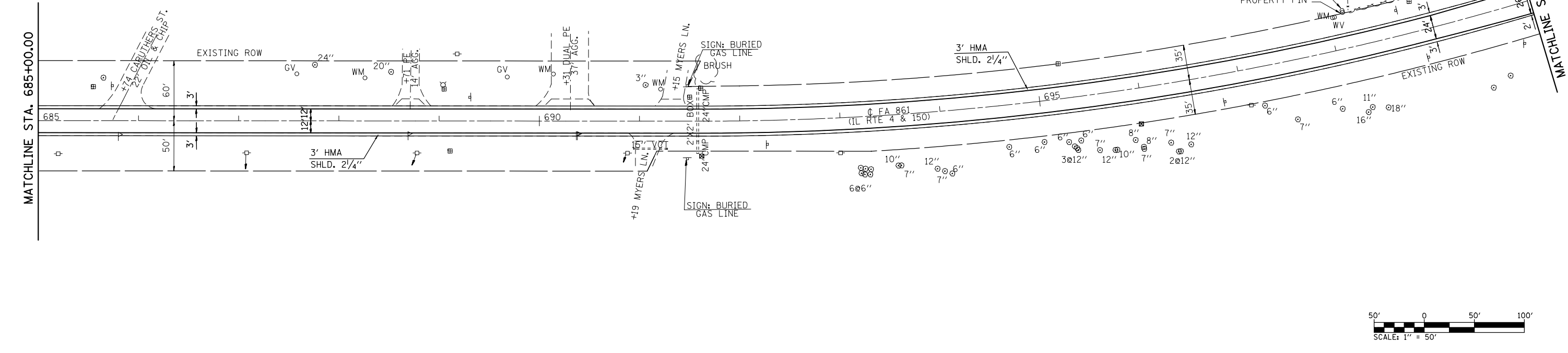


T= 440.71'  
 L= 874.70'  
 E= 33.40'  
 S.E.= 0.0375'/FT.  
 P.C. STA= 691+59.11  
 P.T. STA= 700+33.81  
 S.E. ATTAINED  
 STA. 689+95 TO STA. 692+39  
 STA. 699+54 TO STA. 701+94



NOTE: P.G. LINE TRANSITIONS:  
 STA. 703+81.27 ON C TO  
 STA. 707+99.15 4' RT. OF C

FILE NAME = *FILE#	USER NAME = *USER*	DESIGNED - _____	REVISED - _____	<b>STATE OF ILLINOIS DEPARTMENT OF TRANSPORTATION</b>	<b>PLAN SHEET</b>	F.A.P. RTE. 861	SECTION (110,111)RS-3	COUNTY RANDOLPH	TOTAL SHEETS 23	SHEET NO. 11		
PLOT SCALE = *SCALE*	CHECKED - _____	REVISED - _____	SCALE: 1" = 50'			SHEET 2 OF 7 SHEETS	STA. 685+00.00 TO STA. 715+00.00	CONTRACT NO. 76G65				
*MODELNAME*	DATE - _____	REVISED - _____						ILLINOIS FED. AID PROJECT				