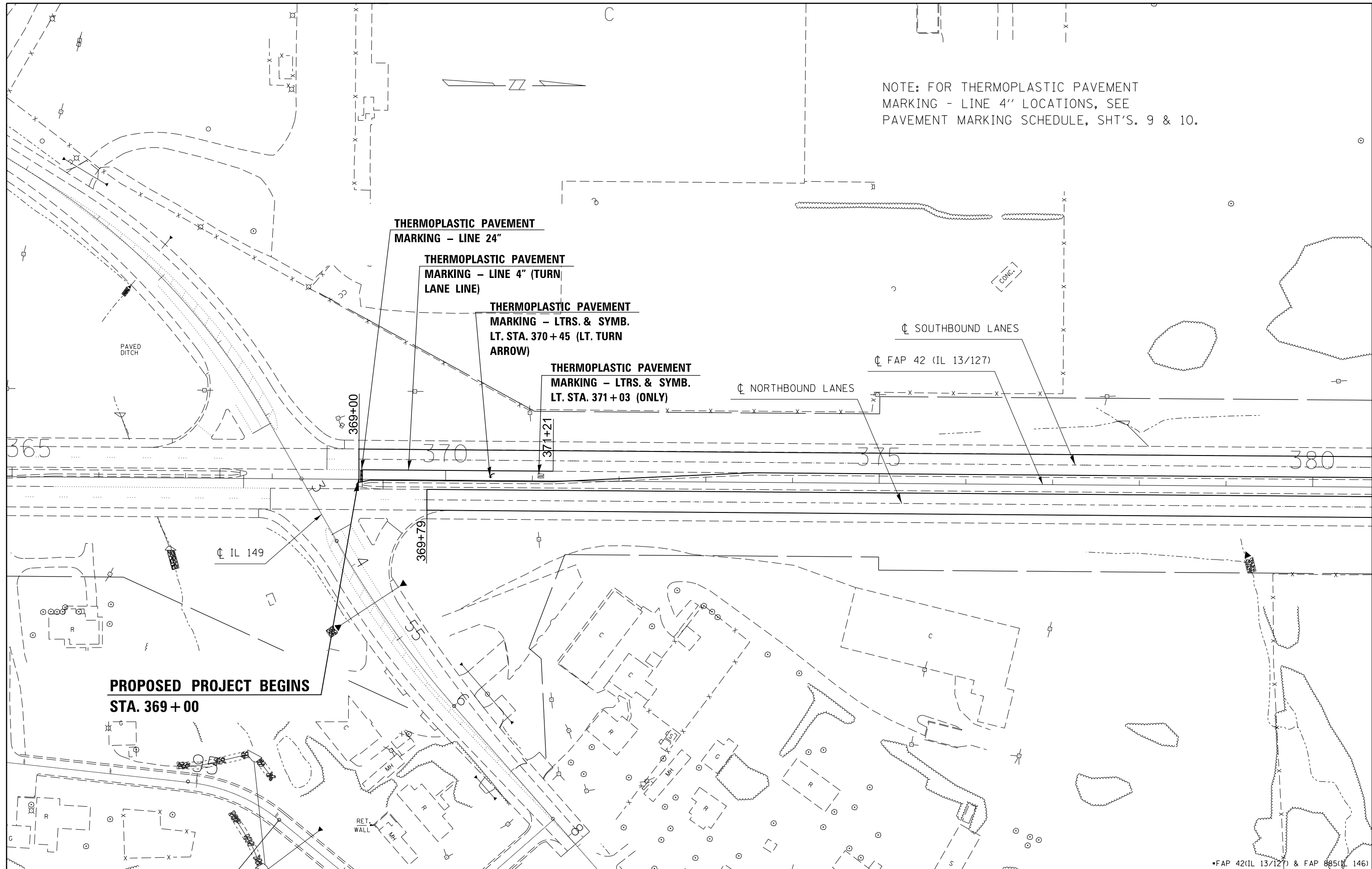


NOTE: FOR THERMOPLASTIC PAVEMENT MARKING - LINE 4" LOCATIONS, SEE PAVEMENT MARKING SCHEDULE, SHT'S. 9 & 10.



**PROPOSED PROJECT BEGINS
STA. 369+00**

•FAP 42(IL 13/127) & FAP 885(IL 146)

FILE NAME =	USER NAME = mccordkr	DESIGNED -	REVISED -
ei:\pwwork\pwwork\mccordkr\ad0342339\78366-sh1.pln.dgn		DRAWN -	REVISED -
Default		CHECKED -	REVISED -
	PLOT SCALE = 100.0000' / in.	DATE -	REVISED -
	PLOT DATE = 12/4/2013		

**STATE OF ILLINOIS
DEPARTMENT OF TRANSPORTATION**

PLAN SHEET 1

SCALE: SHEET OF SHEETS STA. TO STA.

F.A.P. RTE.	SECTION	COUNTY	TOTAL SHEETS	SHEET NO.
• D9 PAVT PRESERV 2014-1	JACKSON/POPE		23	13
			CONTRACT NO. 78366	
ILLINOIS FED. AID PROJECT				