

F.A.S. RTE.	SECTION	COUNTY	TOTAL SHEETS	SHEET NO.
1911	12RS-2	UNION	10	1
		ILLINOIS	CONTRACT NO. 78387	

STATE OF ILLINOIS  
DEPARTMENT OF TRANSPORTATION  
DIVISION OF HIGHWAYS

# PROPOSED HIGHWAY PLANS

FAS ROUTE 1911 (Old US 51)  
SECTION 12RS-2  
PROJECT ACRS-1911 (106)  
SMART RESURFACING AND PATCHING  
UNION COUNTY

C-99-008-14

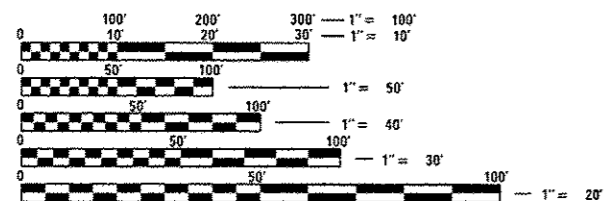
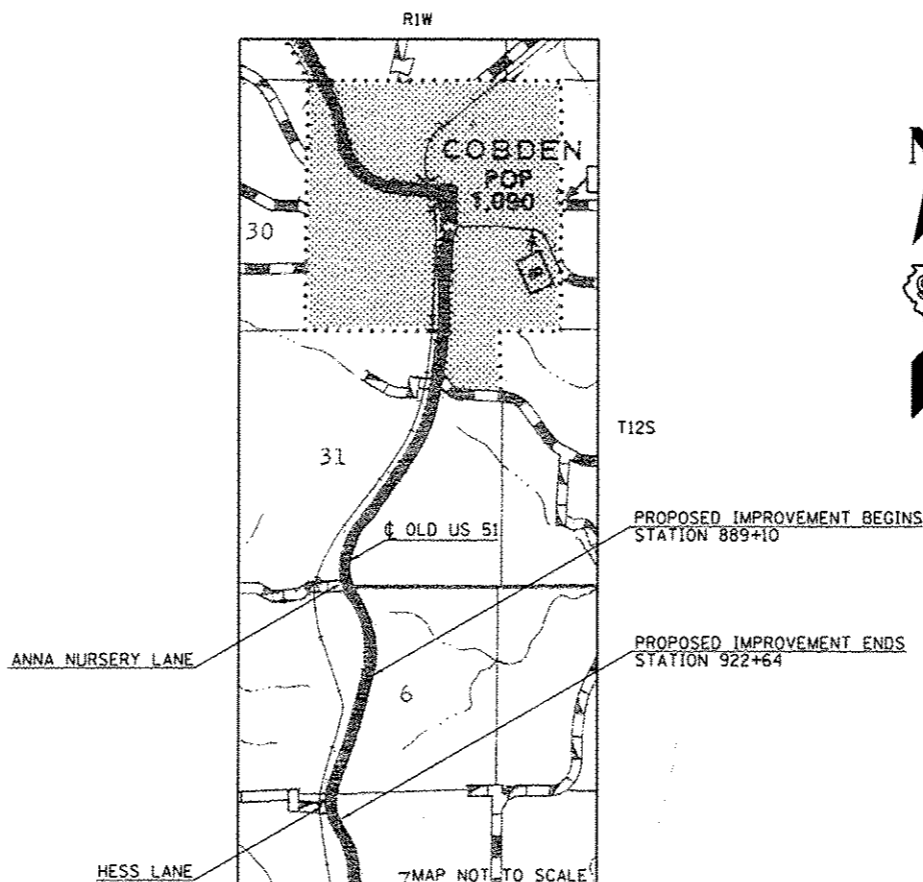
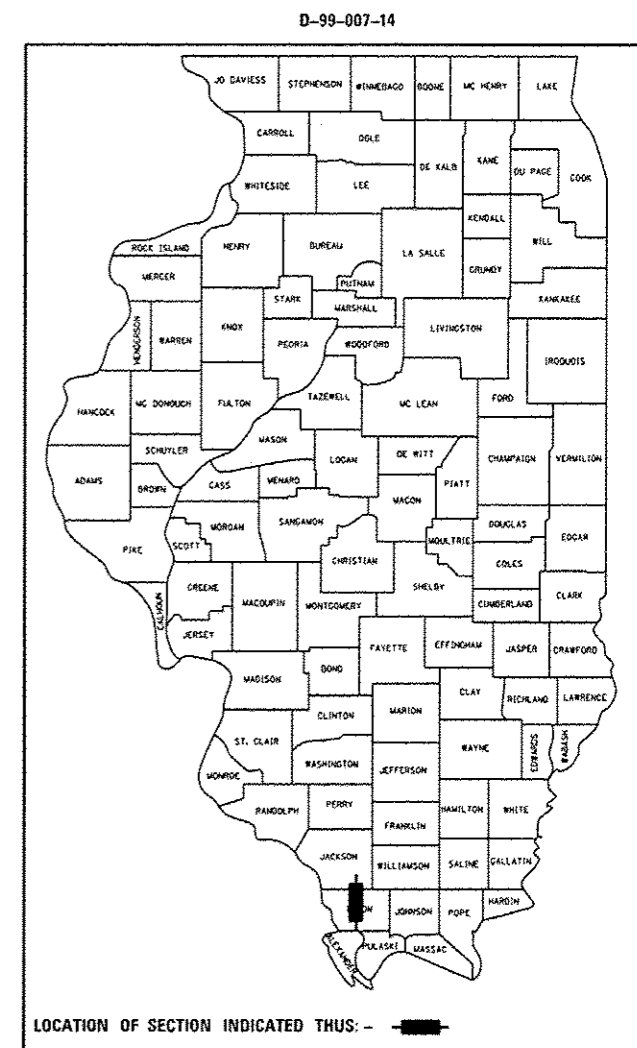
FOR INDEX OF SHEETS, SEE SHEET NO. 2

**TRAFFIC DATA**

OLD US 51: 2014 ADT = 2810 WITH 3.2% TRUCKS  
2034 ADT = 3430 WITH 3.4% TRUCKS

**TOWNSHIPS**

COBDEN



FULL SIZE PLANS HAVE BEEN PREPARED USING STANDARD ENGINEERING SCALES. REDUCED SIZED PLANS WILL NOT CONFORM TO STANDARD SCALES. IN MAKING MEASUREMENTS ON REDUCED PLANS, THE ABOVE SCALES MAY BE USED.

J.U.L.I.E.  
JOINT UTILITY LOCATION INFORMATION FOR EXCAVATION  
1-800-892-0123  
OR 811

PROJECT ENGINEER: CHARLES STEIN  
PROJECT DESIGNER: PAULA STOVER

CONTRACT NO. 78387

GROSS LENGTH = 3354 FT. = 0.635 MILE  
NET LENGTH = 3354 FT. = 0.635 MILE

STATE OF ILLINOIS  
DEPARTMENT OF TRANSPORTATION  
DIVISION OF HIGHWAYS

SUBMITTED Dec 6 2012

Arthur J. Keim  
DEPUTY DIRECTOR OF HIGHWAYS, REGION ENGINEER

Jan 24 2014  
John D. Baranzelli, P.E.  
ENGINEER OF DESIGN AND ENVIRONMENT

Jan 24 2014  
Omer Osman, P.E.  
DIRECTOR OF HIGHWAYS, CHIEF ENGINEER

PRINTED BY THE AUTHORITY  
OF THE STATE OF ILLINOIS