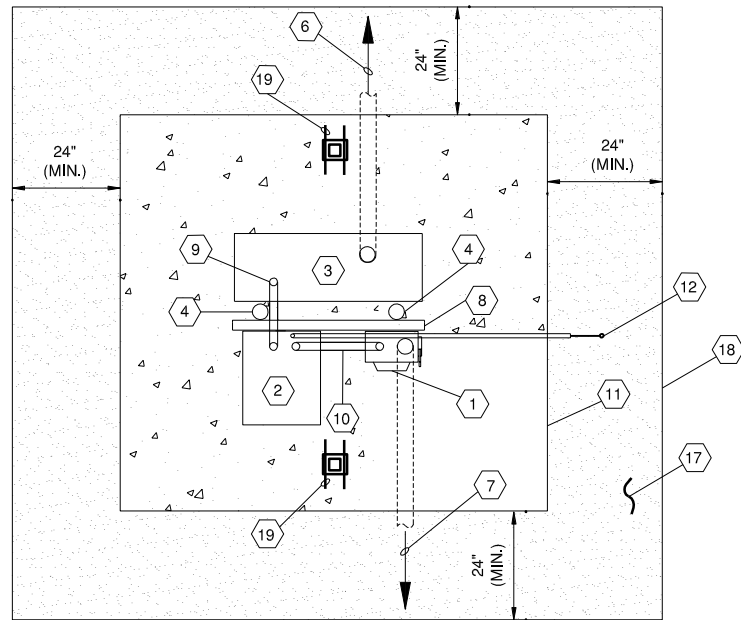
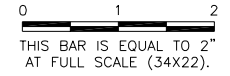
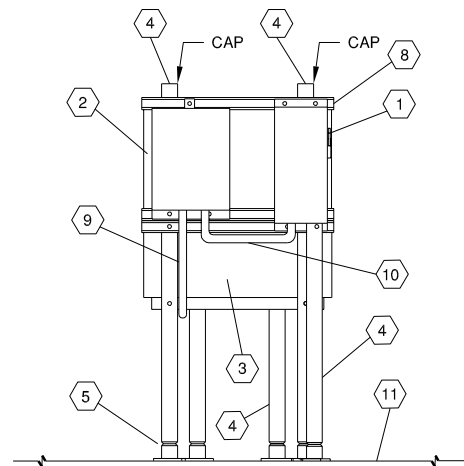


**PO017**

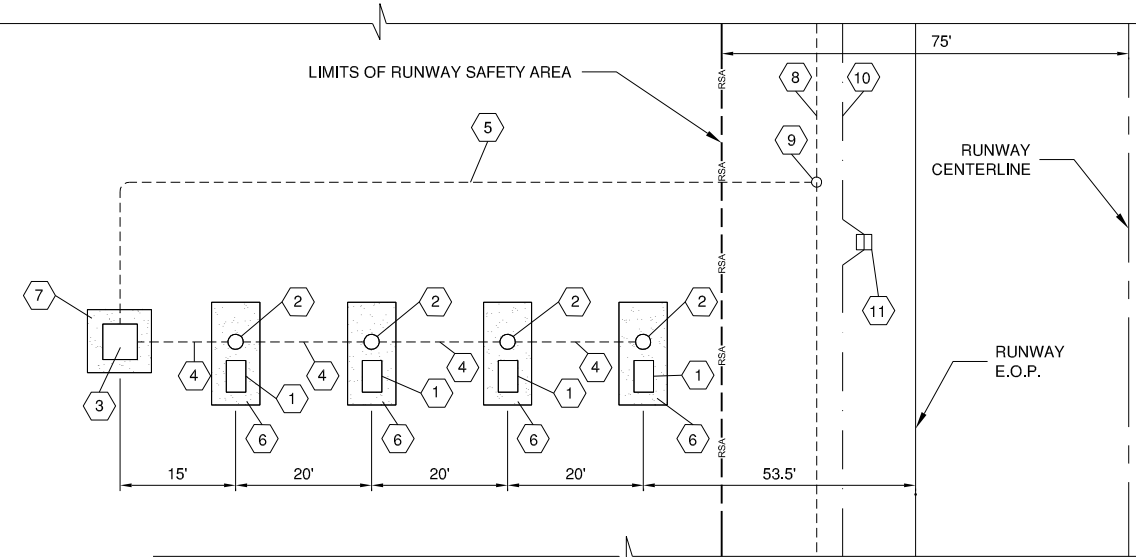
REVISIONS		
NUMBER	BY	DATE



**PAPI POWER UNIT PLAN**  
NOT TO SCALE



**SECTION A**  
NOT TO SCALE



**PAPI PLAN**  
NOT TO SCALE

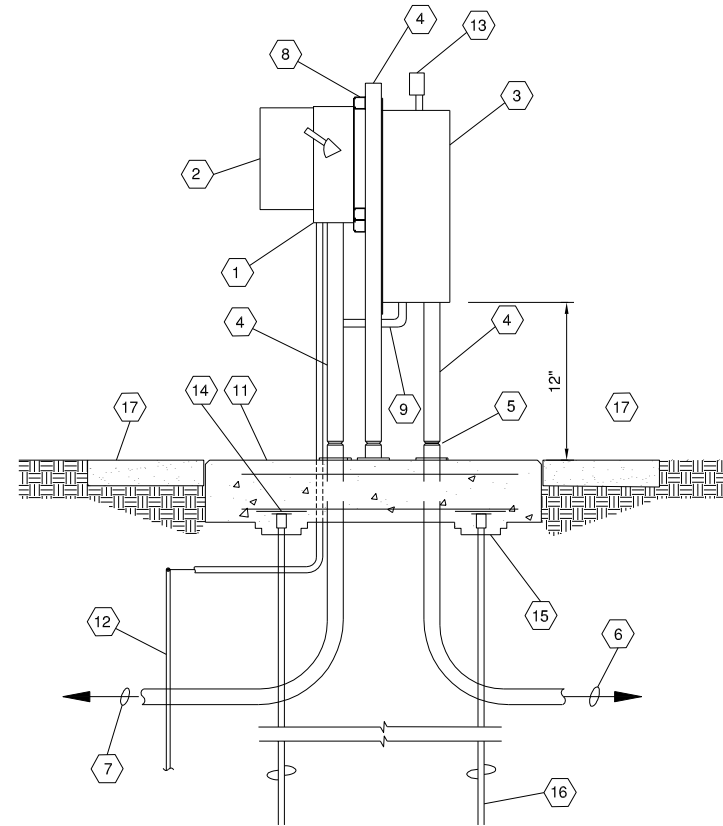
**PAPI PLAN NOTES**

- PAPI LIGHT BOX.
- L-867 CAN WITH SOLID LID.
- PAPI PCU. SEE DETAILS, THIS SHEET.
- PAPI LIGHT BOX POWER WIRING AND TILT SWITCH WIRING IN GRS CONDUIT, SIZED AS REQUIRED.  
NOTE: WIRE SIZES AND NUMBER OF CONDUCTORS WILL VARY BY PAPI MANUFACTURER. CONTRACTOR SHALL COORDINATE WITH SUPPLIED PAPI MANUFACTURER.
- PAPI 480V POWER WIRING FROM SPLICE CAN, TWO #6 XHHW, ONE #6 GROUND IN 1" PVC CONDUIT.
- MIN. 8' x 10' x 4" DEEP AGGREGATE BASE ON SOIL STABILIZATION FABRIC.
- MIN. 4' x 4' x 4" DEEP AGGREGATE BASE ON SOIL STABILIZATION FABRIC.
- EXISTING PLASI 480V POWER WIRING AND CONTROL WIRING.
- NEW L-867 SPLICE CAN. INTERCEPT EXISTING PLASI 480V POWER WIRING AND EXTEND TO NEW PAPI PCU.
- EXISTING RUNWAY SERIES CIRCUIT WIRING.
- EXISTING RUNWAY EDGE LIGHT.

**PAPI POWER UNIT KEYED NOTES**

- HEAVY DUTY UNFUSED DISCONNECT, 600VAC, 1PHASE, 30A, NEMA 3R. SQUARE D H361RB OR EQUAL.
- 3KVA, 240x480V-120/240V, 1PHASE, NEMA 3R GENERAL PURPOSE TRANSFORMER. SQUARE D 3S1F OR EQUAL. STEP DOWN 480V TO 120/240V.
- PAPI POWER & CONTROL UNIT, WITH PHOTOCELL.
- 2" GALVANIZED EMT. (TYP.)
- FRANGIBLE COUPLINGS & FLOOR FLANGES. SEE PAPI INSTALLATION DETAILS FOR HOOK BOLT INSTALLATION IN FOOTING.
- GRS CONDUIT WITH PAPI POWER WIRING AND TILT SWITCH WIRING TO PAPI LIGHT BOXES.
- ONE 1" PVC CONDUIT WITH TWO #6 XHHW, ONE #6 GROUND (480V POWER FROM SPLICE CAN).
- 1-5/8" X 1-5/8" GALVANIZED UNISTRUT, P1000 OR EQUIVALENT.
- TWO #12 THWN & ONE #12 GND IN 3/4" GRS CONDUIT. FROM TRANSFORMER SECONDARY TO PAPI POWER & CONTROL UNIT.
- TWO #12 THWN & ONE #12 GND IN 3/4" GRS CONDUIT. FROM DISCONNECT TO TRANSFORMER PRIMARY.
- 4'X4'X12" THICK CONCRETE PAD MADE OF ITEM 610 CONCRETE
- 3/4" DIA. BY 10 FT. LONG COPPER CLAD GROUND ROD WITH #6 BARE COPPER GROUND CABLE ATTACHED BY EXOTHERMIC WELDING. OTHER END OF CABLE IN 1/2" PVC TERMINATES ON TRANSFORMER GROUND LUG.
- PHOTOCELL, TORK 2101 OR EQUIVALENT.
- #4 REBAR @12" O.C. EACH WAY, TOP AND BOTTOM. BOTTOM MAT TIED TO PIER CONSTRUCTION BRACKETS.
- ADDITIONAL CONCRETE AS NEEDED TO FULLY ENCASE BRACKETS.
- HELICAL PIER ANCHOR (TYP. OF TWO). SEE NOTES, THIS SHEET.
- AGGREGATE ON SOIL STABILIZATION FABRIC.
- WOOD FRAME OF 2 X 4'S, ALL SIDES.
- HELICAL PIER CONSTRUCTION BRACKET.

NOTE:  
THE AIRPORT HAS REQUESTED THAT THE NIGHTTIME BRIGHTNESS BE SEEN AT 20%.



**PAPI POWER UNIT ELEVATION**  
NOT TO SCALE

**PAPI LIGHT BOX PAD & PAPI POWER UNIT PAD HELICAL PIER NOTES**

- HELICAL PIER LEAD SECTIONS, EXTENSIONS, AND TERMINATION UNITS SHALL BE AS MANUFACTURED BY A. B. CHANCE, OR EQUIVALENT.
- HELICAL PIERS SHALL BE SUPPLIED AND INSTALLED BY A CONTRACTOR TRAINED AND CERTIFIED AS AN INSTALLER BY THE PIER MANUFACTURER.
- HELICAL PIERS SHALL BE SIZED AND INSTALLED TO RESIST AN UNFACTORED DESIGN LOAD OF 25,000 POUNDS (TENSION AND COMPRESSION).
- HELICAL PIERS SHALL BE INSTALLED NOMINALLY 6' TO 10' DEEP, OR AS REQUIRED TO ACHIEVE 2,500 POUNDS OF TORQUE.
- CENTRAL SHAFT OF PIERS AND EXTENSIONS SHALL BE ROUND CORNERED SQUARE STEEL, 1-1/2" SQUARE. PIERS AND ALL ACCESSORIES SHALL HAVE A CLASS B1 HOT DIPPED GALVANIZED COATING COMPLYING WITH ASTM-A153.
- HELICAL PIERS SHALL BE INSTALLED IN A SMOOTH, CONTINUOUS MANNER IN COMPLIANCE WITH MANUFACTURER'S RECOMMENDED PROCEDURES.
- HELICAL PIERS SHALL BE VERTICAL, WITH A MAXIMUM DEFLECTION OF 2 DEGREES.
- IF THE REQUIREMENTS FOR THE HELICAL PIER INSTALLATION CANNOT BE MET BECAUSE OF SOIL CONDITIONS, ROCKS, ETC., THEN A TRADITIONAL CONCRETE FOOTING PER PAPI MANUFACTURER'S DETAILS SHALL BE INSTALLED FOR PAPI LIGHT BOXES AND PAPI POWER UNIT AT NO ADDITIONAL COST TO THE CONTRACT.

PONTIAC MUNICIPAL AIRPORT

PONTIAC, ILLINOIS

INSTALL VISUAL NAVIGATIONAL AID (PAPI) SYSTEM  
**PAPI DETAILS 2**

© Copyright CMT, Inc.  
  
**CMT**  
 CRAWFORD, MURPHY & TILLY, INC.  
 CONSULTING ENGINEERS  
 License No. 184-000613

DESIGN BY:	JEF
DRAWN BY:	CMT
CHECKED BY:	JEF
APPROVED BY:	CET
DATE:	NOVEMBER 15, 2013
JOB No:	1305403
IL PROJ. NO.	PNT-4340
AIP PROJ. NO.	3-17-SBGP-XX
SHEET	11 OF 11 SHEETS