

STATE OF ILLINOIS
DEPARTMENT OF TRANSPORTATION
DIVISION OF HIGHWAYS
PROPOSED
CONTRACT MAINTENANCE

FOR INDEX OF SHEETS, SEE SHEET NO. 2

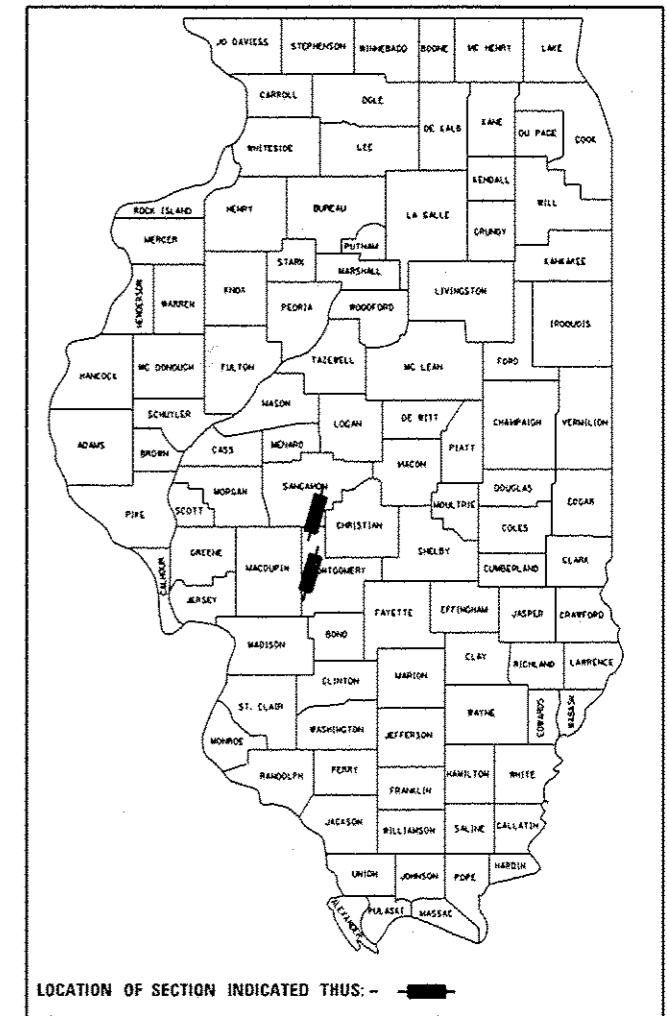
HIGHWAY CLASSIFICATION

F. A. I. ROUTE 55 (I-55)
 ADT: 22,300
 SU= 500
 MU= 3400

FAI ROUTE 55 (I-55)
 SECTION (84-5-1&2, 68-1&2) I-2, CJS
 CENTERLINE MICRO-SURFACING
 SANGAMON & MONTGOMERY COUNTY

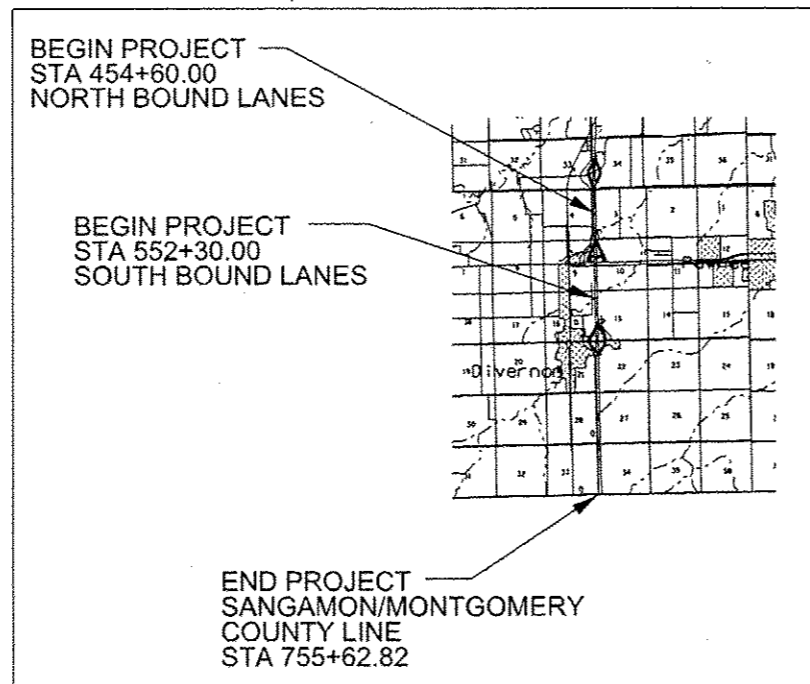
F.A.I. RTE.	SECTION	COUNTY	TOTAL SHEETS	SHEET NO.
55	(84-5-1&2) I-2, CJS	SANG/MONT	13	1
		ILLINOIS	CONTRACT NO. 72J27	

D-96-065-16

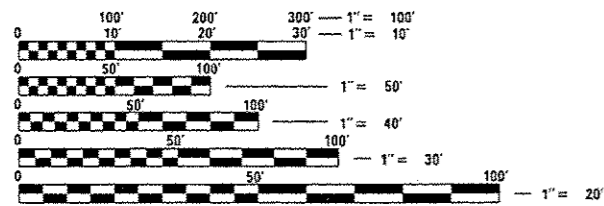
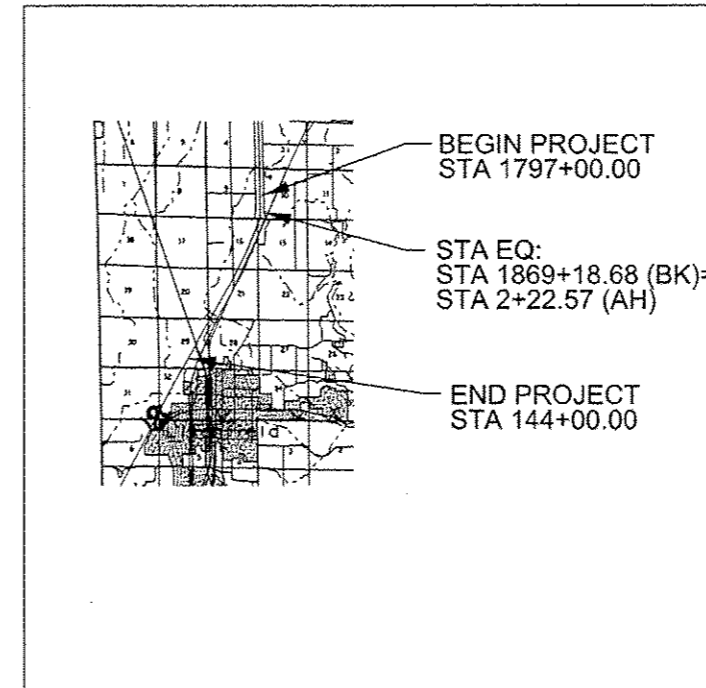


C-96-065-16

SANGAMON COUNTY



MONTGOMERY COUNTY



FULL SIZE PLANS HAVE BEEN PREPARED USING STANDARD ENGINEERING SCALES. REDUCED SIZED PLANS WILL NOT CONFORM TO STANDARD SCALES. IN MAKING MEASUREMENTS ON REDUCED PLANS, THE ABOVE SCALES MAY BE USED.

J.U.L.I.E.
 JOINT UTILITY LOCATION INFORMATION FOR EXCAVATION
 1-800-892-0123
 OR 811

PROJECT ENGINEER: MIKE IRWIN 217.524.7765
 PROJECT MANAGER

CONTRACT NO. 72J27

GROSS LENGTH = 51,498.93 FT. = 9.75 MILE
 NET LENGTH = 51,498.93 FT. = 9.75 MILE

STATE OF ILLINOIS
 DEPARTMENT OF TRANSPORTATION
 DIVISION OF HIGHWAYS

SUBMITTED 13 December 2016
[Signature] REGION FOUR ENGINEER
Jan 27 2017
Maureen M. Addis PE ENGINEER OF DESIGN AND ENVIRONMENT
Jan 27 2017
[Signature] DIRECTOR OF PROGRAM DEVELOPMENT

**PRINTED BY THE AUTHORITY
 OF THE STATE OF ILLINOIS**

INDEX OF SHEETS

- 1 COVER SHEET
- 2 GENERAL NOTES
- 3 SUMMARY OF QUANTITIES
- 4 TYPICAL SECTION
- 5 SCHEDULE OF QUANTITIES
- 6 DETAILS
- 7-9 MONTGOMERY COUNTY PLAN SHEETS
- 10-13 SANGAMON COUNTY PLAN SHEETS

GENERAL NOTES

THE ENGINEER WILL BE THE SOLE JUDGE CONCERNING CURING TIME FOR THE MICROSURFACING AND WHEN THE ROADWAY WILL BE OPENED TO TRAFFIC.

ANY REFERENCE TO A STANDARD IN THESE PLANS SHALL BE INTERPRETED TO MEAN THE EDITION AS INDICATED BY THE SUBNUMBER SHOWN IN THE LIST OF STANDARDS OR THE COPY INCLUDED IN THESE PLANS

TEMPORARY RPM's SHALL BE LEFT IN PLACE, AND ALLOWED TO DETERIORATE UNDER TRAFFIC. MARKERS SHALL BE PLACED AS TO NOT INTERFERE WITH PERMANENT PAVEMENT MARKING OR RPM's

WORK AT RAMPS SHALL BE COMPLETED UNDER RAMP CLOSURE. NO MORE THAN ONE INTERCHANGE SHALL BE CLOSED AT ONE TIME. THE PUBLIC SHALL BE NOTIFIED OF CLOSURE ONE WEEK IN ADVANCE BY MESSAGE BOARD AND PRESS RELEASE.

THE CONTRACTOR SHALL CONTACT JULIE AT LEAST 48 HOURS PRIOR TO EXCAVATING TO DETERMINE WHICH UTILITIES ARE IN THE AREA.

THE FOLLOWING RATES OF APPLICATION HAVE BEEN USED IN CALCULATING PLAN QUANTITIES:

TEMPORARY RPM & RRPMS	2 MARKERS	/ 80 FT OF APPLICATION
-----------------------	-----------	------------------------

STANDARDS

- 000001-06 STANDARD SYMBOLS, ABBREVIATIONS AND PATTERNS
- 001006 DECIMAL OF AN INCH AND OF A FOOT
- 701101-05 OFF-ROAD OPERATIONS MULTILANE, 15' TO 24" FROM PAVEMENT EDGE
- 701106-02 OFF-ROAD OPERATIONS, MULTILANE, MORE THAN 15' AWAY
- 701400-09 APPROACH TO LANE CLOSURE, FREEWAY/EXPRESSWAY
- 701401-10 LANE CLOSURE, FREEWAY/EXPRESSWAY
- 701406-11 LANE CLOSURE, FREEWAY/EXPRESSWAY, DAY OPERATIONS ONLY
- 701411-09 LANE CLOSURE, MULTILANE, AT ENTRANCE OR EXIT RAMP FOR SPEEDS \geq 45 MPH
- 701426-09 LANE CLOSURE, MULTILANE, INTERMITTENT OR MOVING OPERATIONS FOR SPEED \geq 45 MPH
- 701428-01 TRAFFIC CONTROL SETUP AND REMOVAL FREEWAY/EXPRESSWAY
- 701446-08 TWO LANE CLOSURE, FREEWAY/EXPRESSWAY
- 701901-06 TRAFFIC CONTROL DEVICES

STATE OF ILLINOIS
DEPARTMENT OF TRANSPORTATION
DIVISION OF HIGHWAYS
DISTRICT 6

EXAMINED August 8th 20 16
[Signature]
ENGINEER OF OPERATIONS

EXAMINED May 23 20 16
[Signature]
ENGINEER OF PROJECT IMPLEMENTATION

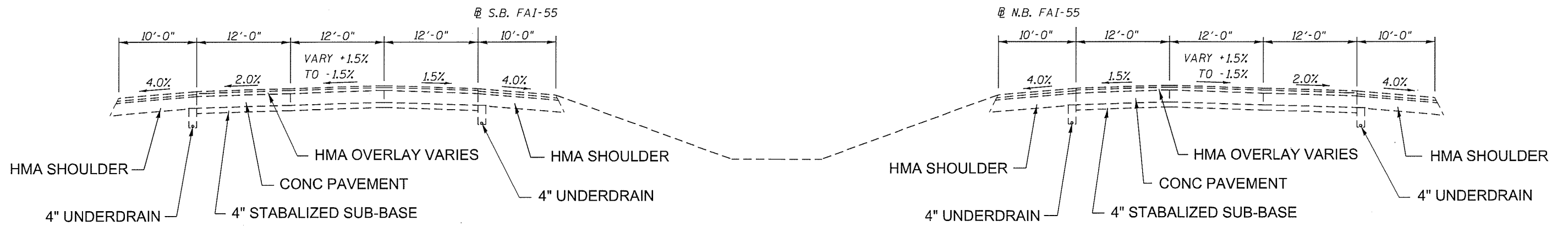
EXAMINED June 14 20 16
[Signature]
ENGINEER OF PROGRAM DEVELOPMENT

FILE NAME * S:\CONTRMAINT\EGN\72J27 - Sangamon & Montgomery Counties 2P Micro\plans\ALL SHEETS\DRAWN	USER NAME * sharptd	DESIGNED - DRAWN	REVISED - REVISED	STATE OF ILLINOIS DEPARTMENT OF TRANSPORTATION	GENERAL NOTES, STANDARDS	F.A.I. RTE.	SECTION	COUNTY	TOTAL SHEETS	SHEET NO.		
Default	PLOT SCALE * 100.0000' / 1" / 1"	CHECKED - DATE	REVISED - REVISED			SCALE:	SHEET OF SHEETS	STA.	TO STA.	55	(84-5-1&2,60-1&2) 1-2, CJS	SANG/MONT
CONTRACT NO. 72J27												
ILLINOIS FED. AID PROJECT												

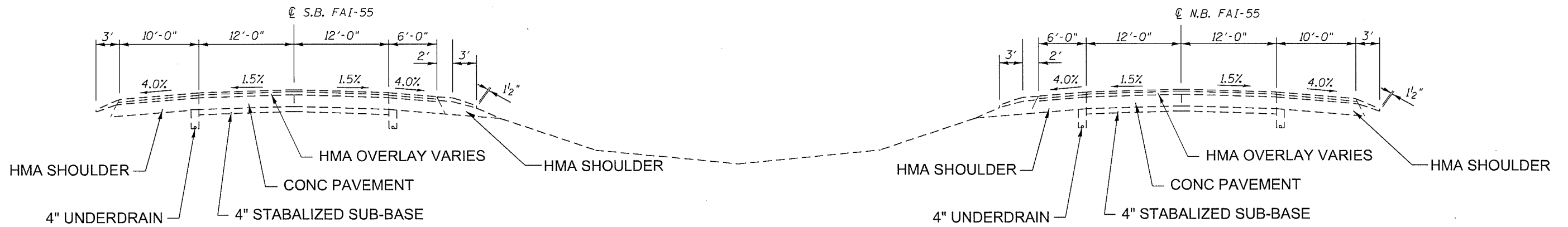
CODE NO.	ITEM	UNIT	TOTAL QUANTITY	0-02000-6002	0-02000-6002
				100% STATE	100% STATE
				ROADWAY	ROADWAY
				0005	0005
				RURAL	RURAL
				SANGAMON	MONTGOMERY
40600275	BITUMINOUS MATERIALS (PRIME COAT)	POUNDS	15347	8929	6418
40600400	MIXTURE FOR CRACKS, JOINTS, AND FLANGEWAYS	TON	100	50	50
67100100	MOBILIZATION	L SUM	1	0.5	0.5
70100420	TRAFFIC CONTROL AND PROTECTION, STANDARD 701411	EACH	6	6	0
70100800	TRAFFIC CONTROL AND PROTECTION, STANDARD 701401	L SUM	1	0.5	0.5
70100815	TRAFFIC CONTROL AND PROTECTION, STANDARD 701446	L SUM	1	0.5	0.5
70106800	CHANGEABLE MESSAGE SIGN	CAL MO	2	1	1
70200100	NIGHTTIME WORK ZONE LIGHTING	L SUM	1	0.5	0.5
* 78008320	POLYUREA PAVEMENT MARKING, TYPE II, LINE 5"	FOOT	25128	14428	10700
70300100	SHORT TERM PAVEMENT MARKING	FOOT	10056	5776	4280
70300150	SHORT TERM PAVEMENT MARKING REMOVAL	SO FT	3350	1924	1426
* 78100100	RAISED REFLECTIVE PAVEMENT MARKER	EACH	3960	2888	1072
78300200	RAISED REFLECTIVE PAVEMENT MARKER REMOVAL	EACH	3960	2888	1072
X7010410	SPEED DISPLAY TRAILER	CAL MO	2	1	1
Z0063804	MICRO-SURFACING, SINGLE PASS, TYPE II, MIXTURE D	SO YD	33206	19842	13364

15 * SPECIALTY ITEM

FILE NAME *	USER NAME * sharpid	DESIGNED -	REVISED -	STATE OF ILLINOIS DEPARTMENT OF TRANSPORTATION	SUMMARY OF QUANTITIES				F.A.I. RTE.	SECTION	COUNTY	TOTAL SHEETS	SHEET NO.
S:\CONTRMINT_CAD\72J27 - Sangamon & Montgomery Counties 2P Microplans\ALL SHEETS\DRAWN	Montgomery Counties 2P Microplans\ALL SHEETS\DRAWN	SB	REVISED -		55	184-5-1&2,68-1&2	1-2, CJS	SANG/MONT	13	3			
Default	PLOT SCALE = 100.0000 / 1 in.	CHECKED -	REVISED -		SCALE:	SHEET	OF	SHEETS	STA.	TO STA.			
	PLOT DATE = 12/9/2016	DATE -	REVISED -		[ILLINOIS] FED. AID PROJECT								



TYPICAL SECTION F.A.I. 55

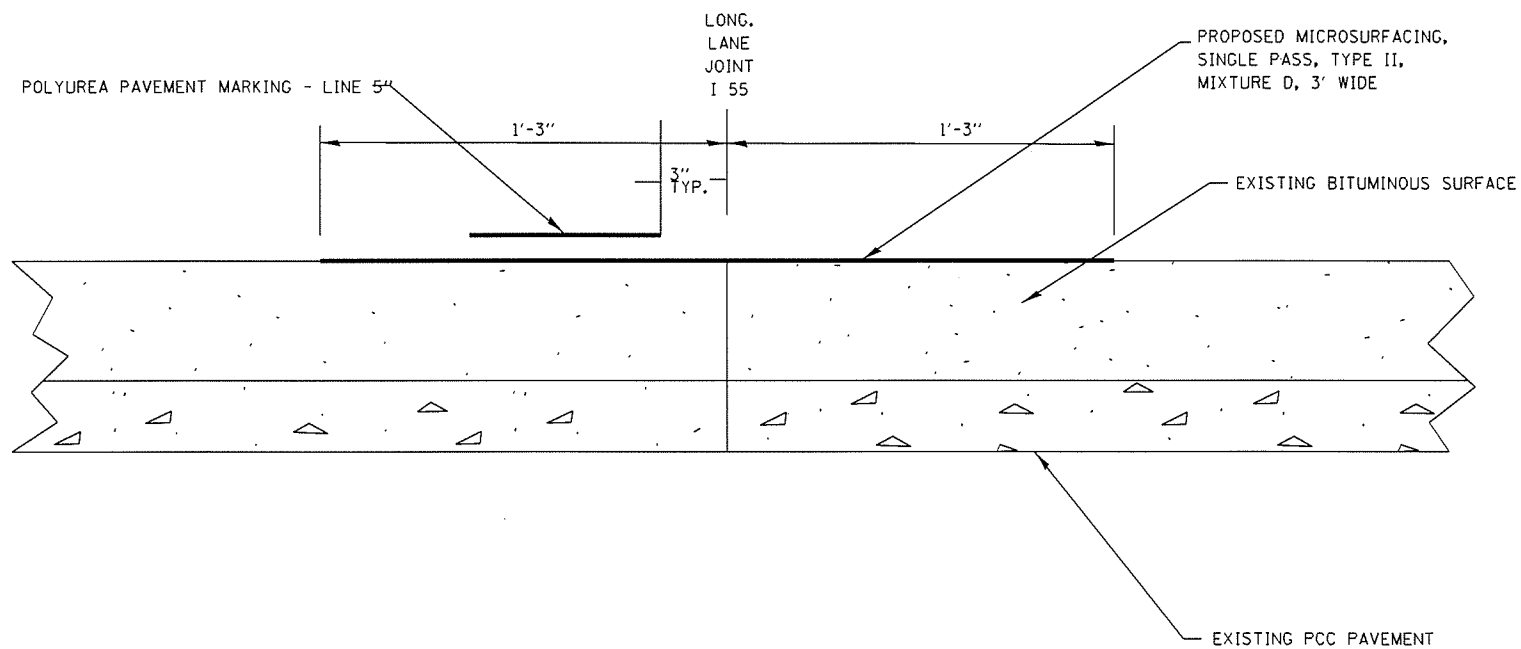


TYPICAL SECTION F.A.I. 55

FILE NAME =	USER NAME = sharptd	DESIGNED -	REVISED -	STATE OF ILLINOIS DEPARTMENT OF TRANSPORTATION	EXISTING TYPICAL SECTIONS				F.A.I. RTE.	SECTION	COUNTY	TOTAL SHEETS	SHEET NO.
S:\CONTRMAINT_CAD\72J27 - Sangamon & Montgomery Counties 2P Micro\plans\ALL SHEETS	DRAWN -	REVISED -	REVISED -						55	(84-5-1&2,68-1&2) 1-2, CJS	SANG/MONT	13	4
Default	PLOT SCALE = 100.0000' / in.	CHECKED -	REVISED -		SCALE: SHEET OF SHEETS STA. TO STA.				ILLINOIS FED. AID PROJECT				
	PLOT DATE = 12/9/2016	DATE -	REVISED -										

MAINLINE								
LOCATION STA. TO STA.	LENGTH	POLYUREA PAVEMENT MARKING TYPE II, 5"	RAISED REFLECTIVE PAVEMENT MARKER	RAISED REFLECTIVE PAVEMENT MARKER REMOVAL	SHORT TERM PAVEMENT MARKING	MICRO-SURFACING SINGLE PASS TYPE II MIXTURE D	BITUMINOUS MATERIALS (PRIME COAT)	
SANGAMON COUNTY	FT	FT	EACH	EACH	FOOT	SQ YD	POUNDS	
NORTHBOUND								
TWO LANES								
755+62.82 527+50.00	22812.82	5703	571	571	2280	7604	3422	
THREE LANES								
527+50.00 454+60.00	14580	3645	365	365	1460	4860	2187	
SOUTHBOUND								
552+29.99 755+62.82	20332.83	5080	508	508	2036	6778	3050	
I-55 AND EXIT 80								
	SANGAMON CO. TOTAL	14428	2888	2888	5776	19842	8929	
MONTGOMERY COUNTY								
NORTHBOUND								
144+00.00 2+22.57	14177.43	3545	355	355	1420	4276	2126	
2+22.57 1869+18.68	STA E0							
1869+18.68 1797+00.00	7218.68	1805	181	181	720	2406	1083	
SOUTHBOUND								
1797+00.00 1869+18.68	7218.68	1805	181	181	720	2406	1083	
1869+18.68 2+22.57	STA E0							
2+22.57 144+00.00	14177.43	3545	355	355	1420	4276	2126	
	MONTGOMERY CO. TOTAL	10700	1072	1072	4280	13364	6418	
	GRAND TOTAL	25128	3960	3960	10056	33206	15347	

FILE NAME =	USER NAME = shorptd	DESIGNED -	REVISED -	STATE OF ILLINOIS DEPARTMENT OF TRANSPORTATION	SCHEDULE OF QUANTITIES				F.A.I RTE.	SECTION	COUNTY	TOTAL SHEETS	SHEET NO.
S:\CONTRMAINT.CAD\72J27 - Sangamon & Montgomery Counties 2P Micro\plans\ALL SHEETS	DESIGNED -	REVISED -	55						(84-5-1&2,68-1&2)	I-2, CJS	SANG/MONT	13	5
Default	PLOT SCALE = 100.0000' / in.	CHECKED -	REVISED -		SCALE:	SHEET	OF	SHEETS	STA.	TO STA.	ILLINOIS FED. AID PROJECT		
	PLOT DATE = 12/9/2016	DATE -	REVISED -		CONTRACT NO. 72J27								



CENTERLINE SEAL COAT

(NOT DRAWN TO SCALE)

NOTES:

1. JOINTS SHALL BE CLEANED OF LOOSE AND UNSOUND MATERIAL AND PATCHED WITH MIXTURE FOR CRACKS, JOINTS AND FLANGWAYS PRIOR TO MICROSURFACING
2. "BUMP REMOVAL", "PAVEMENT MARKING REMOVAL", "JOINT & CRACK SEALING", AND "MICROSURFACING RUT FILLING" ARE NOT TO BE REQUIRED FOR THIS CONTRACT.

FILE NAME =	USER NAME = shorptd	DESIGNED -	REVISED -	STATE OF ILLINOIS DEPARTMENT OF TRANSPORTATION	LONG JOINT PROPOSED MICROSURFACING DETAILS			F.A.I RTE.	SECTION	COUNTY	TOTAL SHEETS	SHEET NO.
S:\CONTRMAINT\CAD\72J27 - Sangamon &	Montgomery Counties 2P Micro\plans\ALL SHEETS	DRAWN -	REVISED -					55	(84-5-1&2,68-1&2)	I-2, CJS	SANG/MONT	13
Default	PLOT SCALE = 100.0000' / in.	CHECKED -	REVISED -		SCALE: SHEET OF SHEETS STA. TO STA.			CONTRACT NO. 72J27				
	PLOT DATE = 12/9/2016	DATE -	REVISED -		ILLINOIS FED. AID PROJECT							

BEGIN PROJECT
STA 1797+00.00

2796+49.09

2859+77

CO HWY 24
068-0094



2859+74.09

2922+03.07

068-0046
068-0045

FILE NAME = C:\projects\Aerial Plan Sheets\ISS aerial	USER NAME = branham	DESIGNED - _____	REVISED - _____
	project\south 55 shts.dgn	DRAWN - _____	REVISED - _____
Default	PLOT SCALE = 400.0000' / in.	CHECKED - _____	REVISED - _____
	PLOT DATE = 12/9/2016	DATE - _____	REVISED - _____

**STATE OF ILLINOIS
DEPARTMENT OF TRANSPORTATION**

**PLANE SHEET
MONTGOMERY COUNTY**

SCALE: _____ SHEET _____ OF _____ SHEETS STA. _____ TO STA. _____

F.A.J. RTE.	SECTION	COUNTY	TOTAL SHEETS	SHEET NO.
55	(84:5-1&2,68-1&2) 1-2, CJS	SANG/MONT	13	7
CONTRACT NO. 72J27			ILLINOIS FED. AID PROJECT	

2922+92.07

2985+92.31

2985+92.31

2922+92.07



FILE NAME =
 C:\projects\Aerial Plan Sheets\155 aerial
 Default

USER NAME = bronhamm
 project\south 55 shts.dgn
 PLOT SCALE = 400.0000' / in.
 PLOT DATE = 12/9/2016

DESIGNED - _____
 DRAWN - _____
 CHECKED - _____
 DATE - _____

REVISED - _____
 REVISED - _____
 REVISED - _____
 REVISED - _____

**STATE OF ILLINOIS
 DEPARTMENT OF TRANSPORTATION**

**PLAN SHEET
 MONTGOMERY COUNTY**

SCALE: _____ SHEET _____ OF _____ SHEETS STA. _____ TO STA. _____

F.A.J. RTE.	SECTION	COUNTY	TOTAL SHEETS	SHEET NO.
55	(84-5-1&2;88-1&2) 1-2, C&S	SANG/MONT	13	8
CONTRACT NO. 72227			ILLINOIS FED. AID PROJECT	



END PROJECT
STA 144+00.00

3048+92.50

3111+92.55

3111+92.55

3174+93.12

FILE NAME =	USER NAME = bronhamme	DESIGNED - _____	REVISED - _____
C:\projects\Aerial Plan Sheets\155 aerial	project\south 55 shts.dgn	DRAWN - _____	REVISED - _____
Default	PLOT SCALE = 400.0000' / in.	CHECKED - _____	REVISED - _____
	PLOT DATE = 12/9/2016	DATE - _____	REVISED - _____

**STATE OF ILLINOIS
DEPARTMENT OF TRANSPORTATION**

**PLAN SHEET
MONTGOMERY COUNTY**

SCALE: _____ SHEET _____ OF _____ SHEETS STA. _____ TO STA. _____

F.A.J. RTE.	SECTION	COUNTY	TOTAL SHEETS	SHEET NO.
55	(84-5-1&2,88-1&2) J-2, CWS	SANG/MONT	13	9
ILLINOIS FED. AID PROJECT			CONTRACT NO. 72J27	



1410+47.08

1473+48.71

1473+48.71

1536+48.71

BEGIN PROJECT
STA 454+60.00
NORTH BOUND LANES

FILE NAME =	USER NAME = branham	DESIGNED -	REVISED -
C:\projects\Aerial Plan Sheets\155 aerial	project\south 55 shts.dgn	DRAWN -	REVISED -
Default	PLOT SCALE = 400.0000' / 1"	CHECKED -	REVISED -
	PLOT DATE = 12/9/2016	DATE -	REVISED -

**STATE OF ILLINOIS
DEPARTMENT OF TRANSPORTATION**

**PLAN SHEET
SANGAMON COUNTY**

SCALE: SHEET OF SHEETS STA. TO STA.

F.A.I. RTE.	SECTION	COUNTY	TOTAL SHEETS	SHEET NO.
55	(84-5-1&2,68-1&2) I-2, CJS	SANG/MONT	13	10
CONTRACT NO. 72J27			ILLINOIS FED. AID PROJECT	



1536+48.71

1500+48.71

1599+48.71

1667+48.71

BEGIN PROJECT
 STA 552+30.00
 SOUTH BOUND LANES

FILE NAME =	USER NAME = branhomme	DESIGNED -	REVISED -
C:\projects\Aerial Plan Sheets\155 aerial	project\south 55 shts.dgn	DRAWN -	REVISED -
Default	PLOT SCALE = 400.0000' / in.	CHECKED -	REVISED -
	PLOT DATE = 12/9/2016	DATE -	REVISED -

**STATE OF ILLINOIS
 DEPARTMENT OF TRANSPORTATION**

**PLAN SHEET
 SANGAMON COUNTY**

SCALE: SHEET OF SHEETS STA. TO STA.

F.A.I. RTE.	SECTION	COUNTY	TOTAL SHEETS	SHEET NO.
55	(84-5-1&2,68-1&2) I-2, CJS	SANG/MONT	13	11
CONTRACT NO. 72J27				
ILLINOIS FED. AID PROJECT				

1788+48.71

1851+48.71

1851+48.71

1914+48.71

END PROJECT
SANGAMON/MONTGOMERY
COUNTY LINE
STA 755+62.82

CO RD 3600 W
MONTGOMERY RD
068-0105

CO RD 3450 N
068-0035



FILE NAME =	USER NAME = branham	DESIGNED -	REVISED -
C:\projects\Aerial Plan Sheets\155 aerial	project\south 55 shts.dgn	DRAWN -	REVISED -
	PLOT SCALE = 400.0000' / 1" =	CHECKED -	REVISED -
	PLOT DATE = 12/9/2016	DATF -	REVISED -

STATE OF ILLINOIS
DEPARTMENT OF TRANSPORTATION

PLAN SHEET
SANGAMON COUNTY

SCALE: _____ SHEET _____ OF _____ SHEETS | STA. _____ TO STA. _____

F.A.I. RTE.	SECTION	COUNTY	TOTAL SHEETS	SHEET NO.
55	(84-5-1&2,68-1&2) J-2, CJS	SANG/MONT	13	13
CONTRACT NO. 72027			ILLINOIS FED. AID PROJECT	