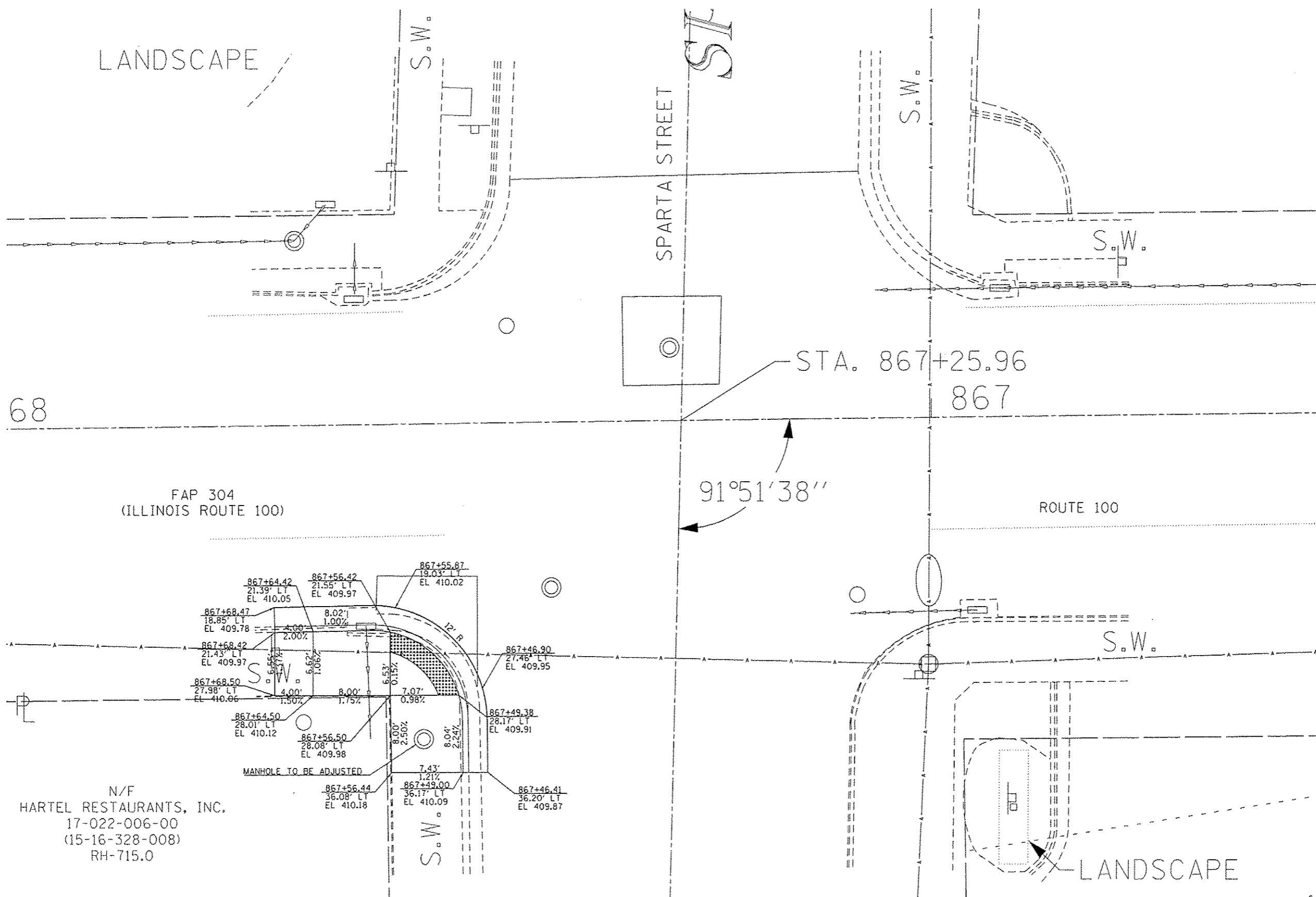




LANDSCAPE



68

FAP 304  
(ILLINOIS ROUTE 100)

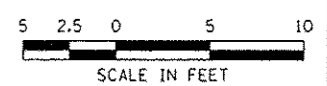
ROUTE 100

91°51'38"

N/F  
 HARTEL RESTAURANTS, INC.  
 17-022-006-00  
 (15-16-328-008)  
 RH-715.0

**FAP 861A (IL 150 /IL 4) & SPARTA STREET**

LANDSCAPE



△ REVISED SHEET 2-14-2017

FILE NAME : p:\11\pwi\B\horne\shf\in\com\Transportation\Eng\Documents\1906620-5\steel\11e\ADARamps\1906620-5-Details\1906620-5-Details.dwg	USER NAME : bschmidt	DESIGNED -	REVISED -	STATE OF ILLINOIS DEPARTMENT OF TRANSPORTATION	ADA RAMP DETAILS SPARTA STREET	F.A.P.	SECTION	COUNTY	TOTAL SHEETS	SHEET NO.
	PLLOT SCALE : 10.0000' / in.	CHECKED -	REVISED -			B61A	110-1RS-3	RANDOLPH	31	18
PLLOT DATE : 12/8/2016	DATE -	REVISED -	REVISED -	SCALE: 1" = 10'	SHEET 2 OF 2 SHEETS	STA.	TO STA.	ILLINOIS FED. AID PROJECT CONTRACT NO. 76H47		