

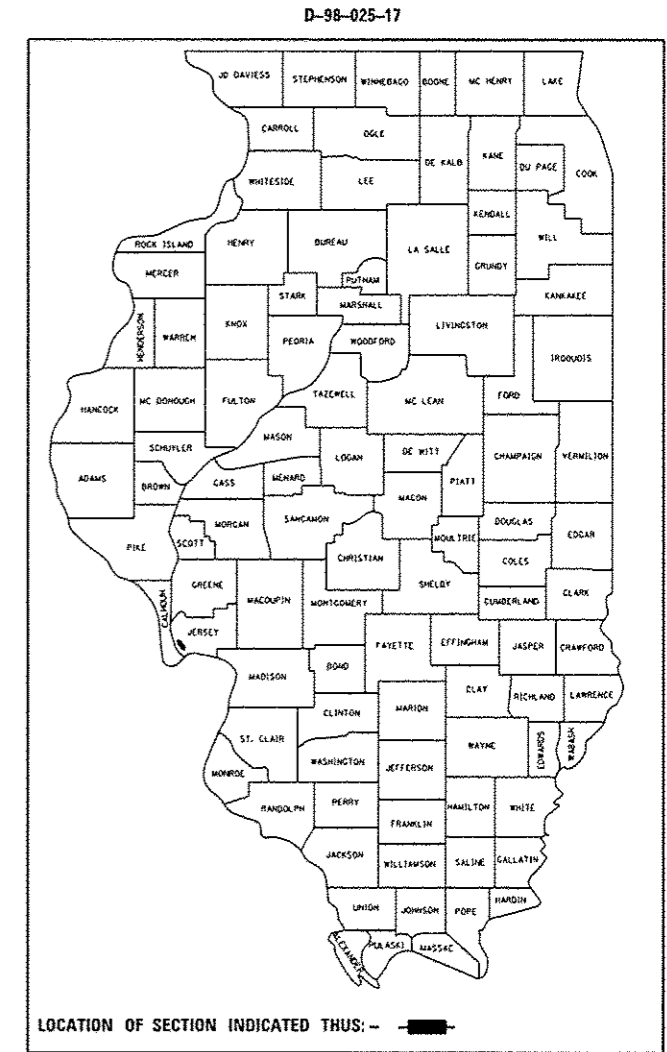
STATE OF ILLINOIS  
DEPARTMENT OF TRANSPORTATION

F.A.P. R.T.E.	SECTION	COUNTY	TOTAL SHEETS	SHEET NO.
304	(6,4,2)CJS-1	JERSEY	7	1
		ILLINOIS	CONTRACT NO. 76K09	

FOR INDEX OF SHEETS, SEE SHEET NO. 2

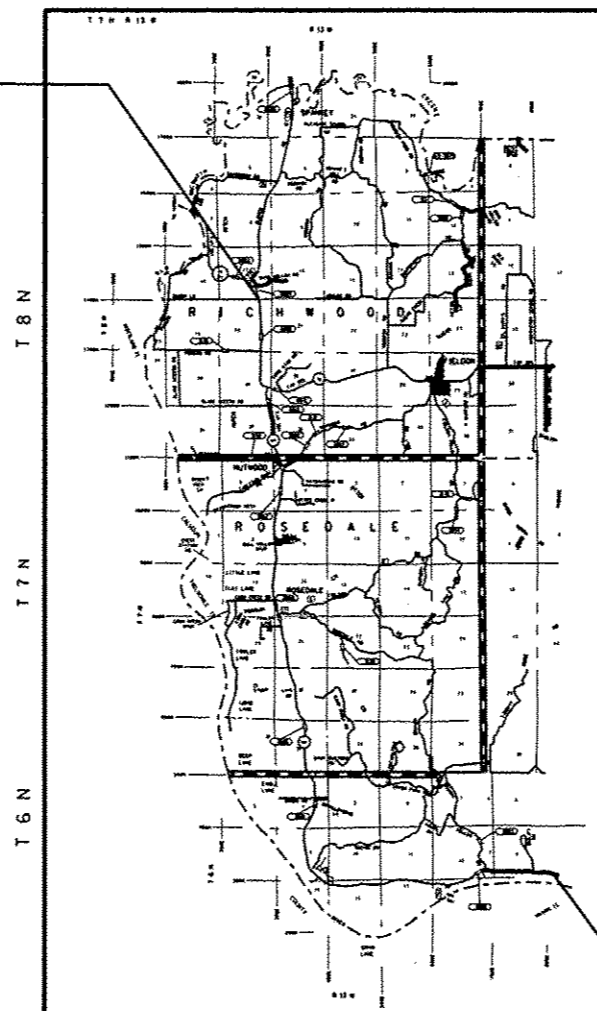
# PROPOSED HIGHWAY PLANS

FAP 304 (IL 100/L 16)  
SECTION (6,4,2)CJS-1  
CRACK SEAL  
JERSEY COUNTY

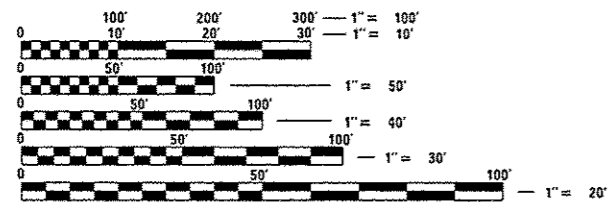


C-98-013-17  
R 13 W

END PROJECT  
LATITUDE 39.130479  
LONGITUDE -90.563315



BEGIN PROJECT  
LATITUDE 38.971856  
LONGITUDE -90.460808



FULL SIZE PLANS HAVE BEEN PREPARED USING STANDARD ENGINEERING SCALES. REDUCED SIZED PLANS WILL NOT CONFORM TO STANDARD SCALES. IN MAKING MEASUREMENTS ON REDUCED PLANS, THE ABOVE SCALES MAY BE USED.

J.U.L.I.E.  
JOINT UTILITY LOCATION INFORMATION FOR EXCAVATION  
1-800-892-0123  
OR 811

PROJECT ENGINEER: HERVE GELIN (618) 346-3179  
SQUAD LEADER: BILLIE OWEN (618) 346-3209

CONTRACT NO. 76K09

MAP NOT TO SCALE  
GROSS LENGTH = 75504 FT. = 14.3 MILE  
NET LENGTH = 74779.2 FT. = 14.16 MILE

STATE OF ILLINOIS  
DEPARTMENT OF TRANSPORTATION

SUBMITTED Dec 5 20 16  
Jeffrey Z. Kam... REGIONAL ENGINEER

Jan 27 20 17  
Muhammad M. Adib P... ENGINEER OF DESIGN AND ENVIRONMENT

Jan 27 20 17  
[Signature] DIRECTOR OF PROGRAM DEVELOPMENT

PRINTED BY THE AUTHORITY  
OF THE STATE OF ILLINOIS

INDEX OF SHEETS

1. COVER SHEET
2. INDEX OF SHEETS, HIGHWAY STANDARDS, GENERAL NOTES, COMMITMENTS, ADT
3. SUMMARY OF QUANTITIES
4. TYPICAL SECTIONS
5. SCHEDULE OF QUANTITIES
6. LOCATION MAPS
7. CRACK & JOINT SEALING DETAIL

HIGHWAY STANDARDS

000001-06  
701306-03  
701901-06

COMMITMENTS

NO COMMITMENTS

ADT

0.2MI E OF SKI LIFT RD TO BRUSSELS FERRY  
2015 ADT = 1750 (ACTUAL)  
2016 ADT = 1750 (ESTIMATED)  
2036 ADT = 1950 (ESTIMATED)  
SU = 4.0% MU = 2.3%

BRUSSELS FERRY TO 0.1MI E OF TR35  
2015 ADT = 1150 (ACTUAL)  
2016 ADT = 1150 (ESTIMATED)  
2036 ADT = 1300 (ESTIMATED)  
SU = 9.5% MU = 4.3%

GENERAL NOTES

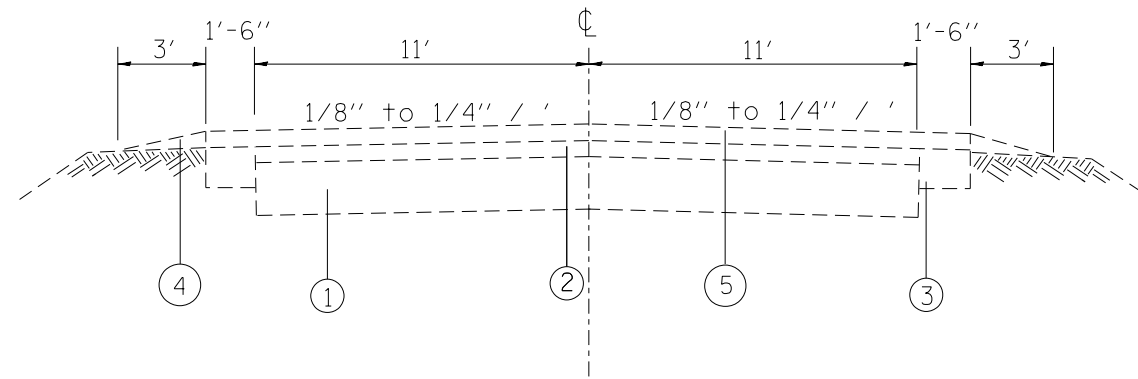
1. ILLINOIS STATE LAW REQUIRES A 48-HOUR NOTICE TO BE GIVEN TO UTILITIES BEFORE DIGGING. FIELD MARKING OF FACILITIES MAY BE OBTAINED BY CONTACTING J.U.L.I.E. (1-800-892-0123 OR 811) OR FOR NON-MEMBERS THE UTILITY COMPANY DIRECTLY.
2. THE CONTRACTOR AND THE ENGINEER SHALL BE AWARE THAT NO SURVEY WAS PERFORMED FOR THIS PROJECT. THE STATIONING, TOPOGRAPHY, AND QUANTITIES SHOWN IN THE PLANS WERE CREATED USING MICROFILM AND FIELD MEASUREMENTS. ALL SHALL BE ASSUMED TO BE APPROXIMATE. THE CONTRACTOR SHALL VERIFY DIMENSIONS AND CONDITIONS IN THE FIELD PRIOR TO CONSTRUCTION AND ORDERING OF MATERIALS.
3. THE DEPARTMENT STRONGLY ENCOURAGES THE PRIME CONTRACTOR AND THEIR APPROVED SUB-CONTRACTORS TO HIRE MINORITY, WOMEN AND DISADVANTAGED INDIVIDUALS FROM ITS FEDERALLY FUNDED HIGHWAY CONSTRUCTION CAREERS TRAINING PROGRAM (HCCTP) TO HELP MEET WORKFORCE AND TRAINEE GOALS. THIS PROGRAM IS TRAINING MINORITIES, WOMEN AND DISADVANTAGED INDIVIDUALS IN HIGHWAY CONSTRUCTION-RELATED SKILLS, E.G., MATH FOR THE TRADES, JOB READINESS, TECHNICAL SKILLS COURSEWORK (CARPENTRY, CONCRETE FLATWORK, BLUEPRINT READING, SITE PLANS, SITE WORK, TOOLS USE, ETC.) AND OSHA 10 HOUR CERTIFICATION, TO PREPARE THEM FOR A CAREER IN THE HIGHWAY CONSTRUCTION TRADES. GRADUATES ARE WELL-TRAINED AND READY TO BECOME PRODUCTIVE ENTRY-LEVEL CONSTRUCTION WORKERS. CONTACT THE DISTRICT 8 EEO OFFICE AT 618-346-3360 AND/OR THE HCCTP COORDINATOR AT 618-874-6528 TO LEARN MORE ABOUT THE PROGRAM AND FOR ASSISTANCE IN MEETING WORKFORCE AND TRAINEE GOALS.
4. ALL TURF AREAS DISTURBED BY THE CONTRACTOR SHALL BE SEEDED WITH THE APPROPRIATE EROSION CONTROL, AS DIRECTED BY THE ENGINEER, AT THE CONTRACTOR'S EXPENSE.
5. ANY RAISED REFLECTIVE PAVEMENT MARKERS ENCOUNTERED SHALL BE LEFT IN PLACE. ROUTING SHALL BE GAPPED WHERE RAISED REFLECTIVE PAVEMENT MARKERS ARE ENCOUNTERED SO AS TO LEAVE THEM FUNCTIONAL.
6. THE RESIDENT ENGINEER SHALL DETERMINE THE EXACT LOCATION WHERE CRACKS ARE TO BE ROUTED AND FILLED.
7. APPLICATION RATE IS 0.284 LB/FT
8. CARE SHALL BE TAKEN TO AVOID ALL PAVEMENT MARKINGS. ANY PAVEMENT MARKING DISTURBED FOR ANY REASON BY THE CONTRACTOR SHALL BE REPAIRED BY THE CONTRACTOR AND NO ADDITIONAL COMPENSATION SHALL BE ALLOWED.
9. ALL STRUCTURES ARE OMITTED FROM THE CONTRACT.
10. NO OVERNIGHT LANE CLOSURES WILL BE ALLOWED ON THIS PROJECT.

FILE NAME *	USER NAME * agbooleto	DESIGNED -	REVISED -	<b>STATE OF ILLINOIS DEPARTMENT OF TRANSPORTATION</b>	<b>INDEX OF SHEETS, HIGHWAY STANDARDS GENERAL NOTES, COMMITMENTS, &amp; ADT</b>	F.A.P. RTE.	SECTION	COUNTY	TOTAL SHEETS	SHEET NO.	
Default	PLOT SCALE * 2.0000 "/ in.	CHECKED -	REVISED -			304	16.4,21CJ5-1	JERSEY	7	2	
	PLOT DATE * 12/27/2016	DATE -	REVISED -			ILLINOIS FED. AID PROJECT					
						SCALE:	SHEET	OF	SHEETS	STA.	TO

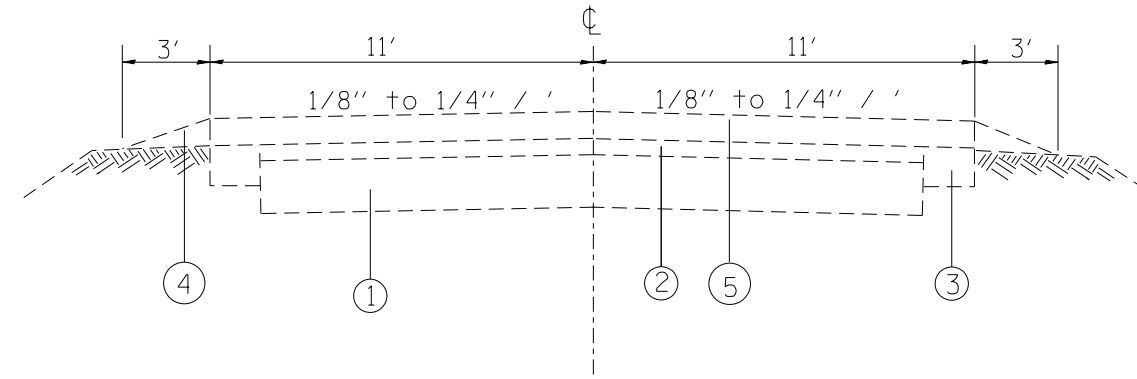
11/11/16

CODE NO.	ITEM	UNIT	TOTAL QUANTITY	100 % STATE	
				CONSTR. CODE	
				ROADWAY	
				0005	
				RURAL	
45100100	CRACK ROUTING (PAVEMENT)	FOOT	94380	94380	
45100200	CRACK FILLING	POUND	26804	26804	
67100100	MOBILIZATION	LSUM	1	1	
70100460	TRAFFIC CONTROL AND PROTECTION, STANDARD 701306	LSUM	1	1	

4



IL 100  
MM 0.00 TO 5.65



IL 100  
MM 5.65 TO 14.37

- ① EXIST. AGG. BASE, 6"
- ② EXIST. RESURFACING
- ③ EXIST. AGG. BASE COURSE, TYPE A, 10"
- ④ EXIST. AGG. SHOULDER WEDGE
- ⑤ EXIST. HMA SURFACE COURSE, 2 1/4"

LOCATION OF SAFETY SHOULDERS VARIES  
THROUGHOUT THE PROJECT LIMITS AND ARE NOT  
SHOWN ON THE TYPICAL SECTIONS.

FILE NAME =	USER NAME = ogboolato	DESIGNED -	REVISED -	<b>STATE OF ILLINOIS DEPARTMENT OF TRANSPORTATION</b>	<b>EXISTING TYPICAL SECTION</b>			F.A.P. RTE.	SECTION	COUNTY	TOTAL SHEETS	SHEET NO.
pw:\IL\084EBIDINTEG.illinois.gov\PWIDOT\Documents\DOT Offices\District 8\Projects\0875\DRAWING\DATA\EA0\Sheets\D875K09-sht-typoc		CHECKED -	REVISED -		304	(6,4,2)CJ5-1	JERSEY	7	4			
Default	PLOT SCALE = 2.0000' / in.	DATE -	REVISED -		SCALE: SHEET 1 OF 2 SHEETS STA. TO STA.			CONTRACT NO. 76K09				
	PLOT DATE = 12/1/2016	DATE -	REVISED -		ILLINOIS FED. AID PROJECT							

FINAL SURVEY NOTE BOOK NO.	SURVEYED PLOTTED TEMPLATE AREAS CHECKED	BY	DATE

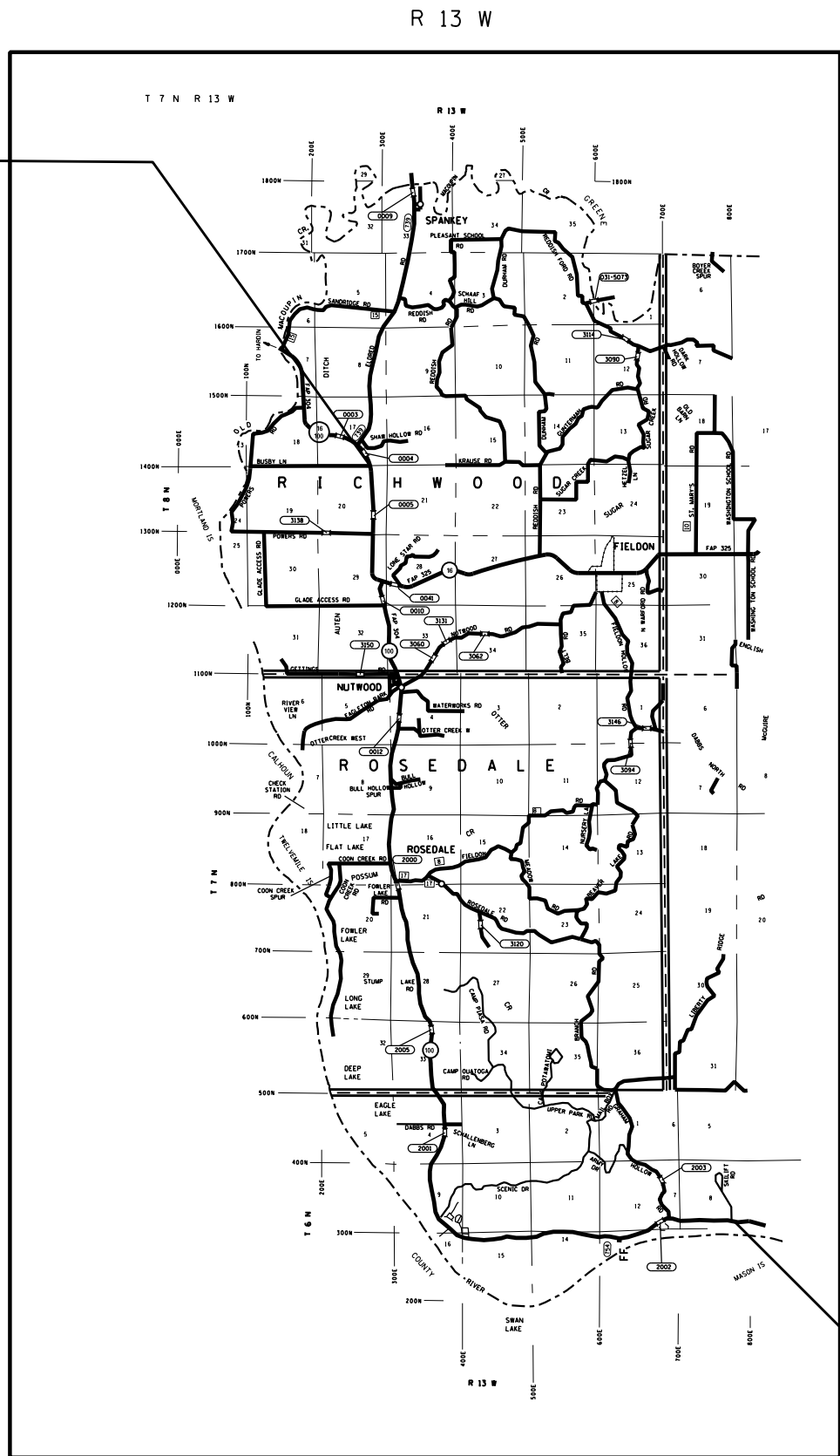
ORIGINAL SURVEY NOTE BOOK NO.	SURVEYED PLOTTED TEMPLATE AREAS CHECKED	BY	DATE

IL 100			
	CRACK ROUTING ( FEET )	CRACK FILLING ( POUNDS )	COMMENTS
CENTERLINE JOINT	75504	21443.1	
LANE ( 25% OF JOB LENGTH )	18876	5360.8	TRANSVERSE AND LONGITUDINAL CRACKS
TOTAL	94380	26803.9	

FILE NAME =	USER NAME = ogbooloto	DESIGNED -	REVISED -	<b>STATE OF ILLINOIS DEPARTMENT OF TRANSPORTATION</b>	<b>SCHEDULE OF QUANTITIES</b>			F.A.P. RTE.	SECTION	COUNTY	TOTAL SHEETS	SHEET NO.
p:\IL084EBIDINTEG.illinois.gov\PIDOT\Documents\DOT Offices\District 8\Projects\0876K09\CDRAWINGS\0876K09-sht-schedule.dgn	PLOT SCALE = 2.0000' / in.	CHECKED -	REVISED -					304	(6,4,2)CJS-1	JERSEY	7	5
Default	PLOT DATE = 12/1/2016	DATE -	REVISED -		SCALE: SHEET OF SHEETS STA.			CONTRACT NO. 76K09				
					ILLINOIS FED. AID PROJECT							

END PROJECT  
0.1MI E OF TR-35

T 8 N  
T 7 N  
T 6 N



BEGIN PROJECT  
0.2MI E OF SKI LIFT RD

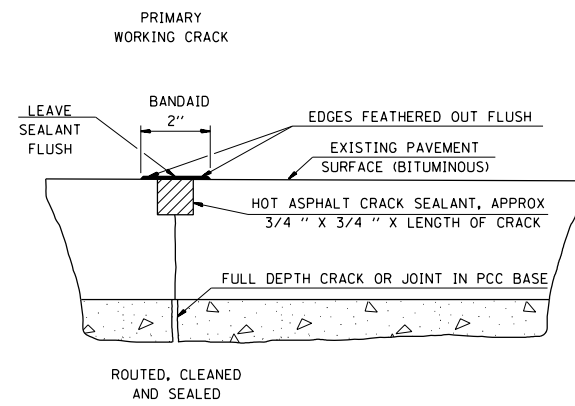
FILE NAME =	USER NAME = ogboolato	DESIGNED -	REVISED -
p:\l\084EBIDINTEG.illinois.gov\PIWIDOT\Documents\IDOT Offices\District 8\Projects\0875\DRAWING\DATA\CAD\Sheets\0875\0875-1\0875-1-6.dwg		CHECKED -	REVISED -
Default	PLOT DATE = 12/2/2016	DATE -	REVISED -

**STATE OF ILLINOIS  
DEPARTMENT OF TRANSPORTATION**

**LOCATION MAP**

SCALE: SHEET OF SHEETS STA. TO STA.

F.A.P. RTE.	SECTION	COUNTY	TOTAL SHEETS	SHEET NO.
304	(6,4,2)CJS-1	JERSEY	7	6
CONTRACT NO. 76K09				
ILLINOIS FED. AID PROJECT				



TYPICAL DETAILS FOR CRACK SEALING  
FOR BITUMINOUS PAVEMENT

FILE NAME =	USER NAME = ogboolato	DESIGNED -	REVISED -
p:\11\084EBIDINTEG.illinois.gov\PI\DOT\Documents\DOT Offices\District 8\Projects\0875\Drawings\EA\Sheets\0875-sht-plan.dwg		CHECKED -	REVISED -
Default	PLOT DATE = 12/2/2016	DATE -	REVISED -

STATE OF ILLINOIS  
DEPARTMENT OF TRANSPORTATION

CRACK & JOINT SEALING DETAIL

SCALE: SHEET OF SHEETS STA. TO STA.

F.A.P. RTE.	SECTION	COUNTY	TOTAL SHEETS	SHEET NO.
304	(6,4,2)CJS-1	JERSEY	7	7
CONTRACT NO. 76K09				
ILLINOIS FED. AID PROJECT				