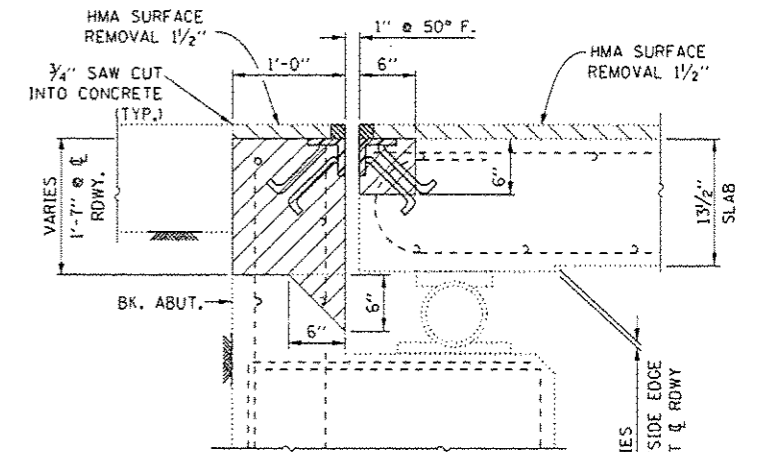
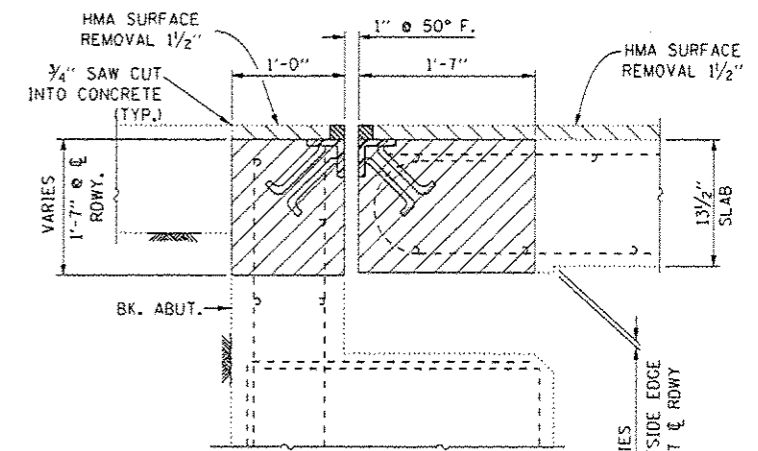


**EXISTING CROSS SECTION
LOOKING EAST**

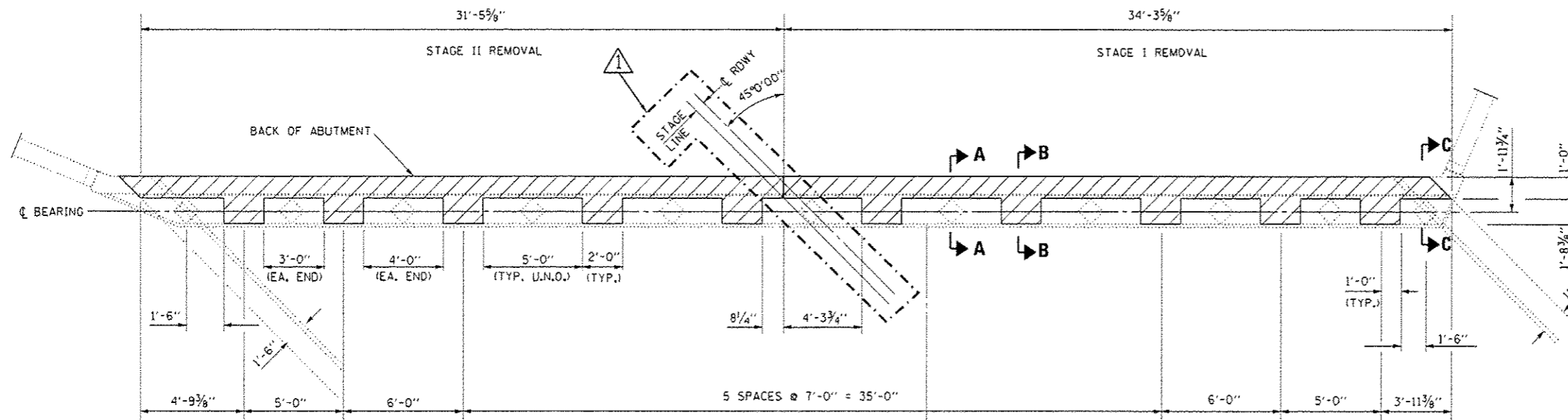
*DIMENSIONS AT RT. L'S TO ϕ RDWY.



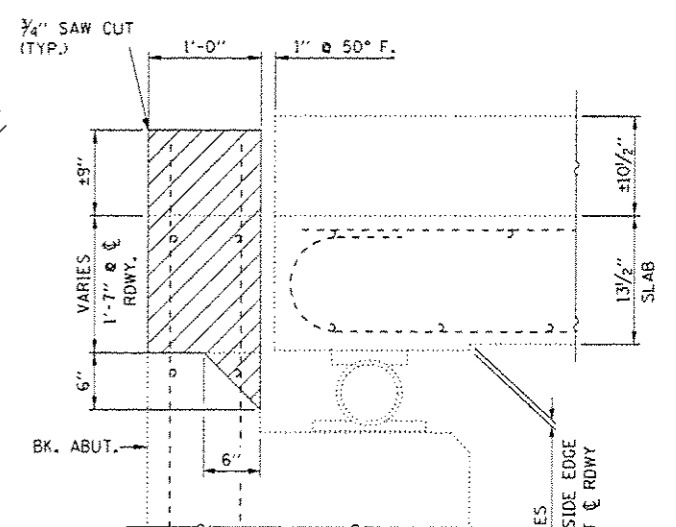
SECTION A-A



SECTION B-B



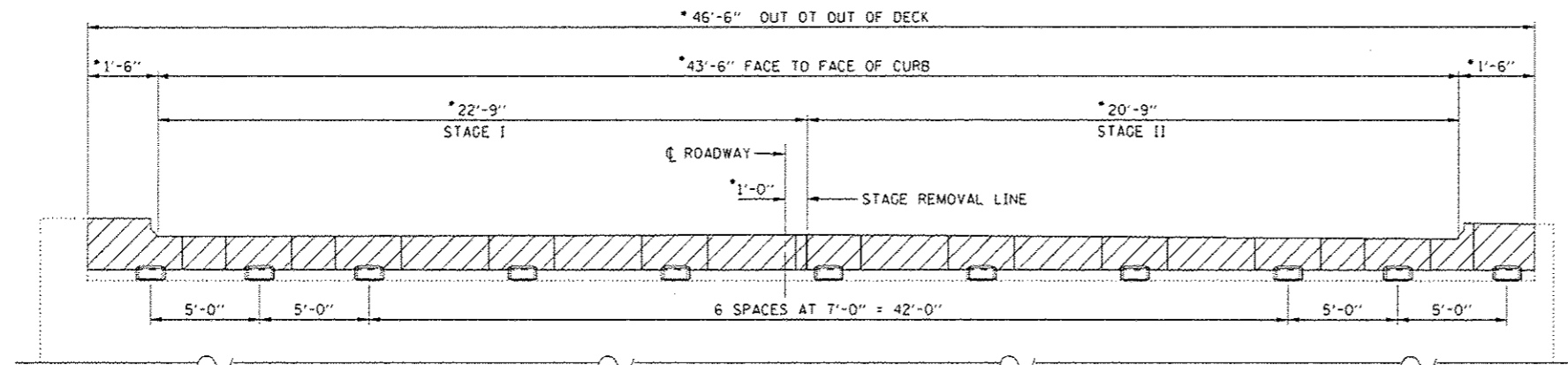
**EXISTING PLAN
EAST ABUTMENT**



SECTION C-C

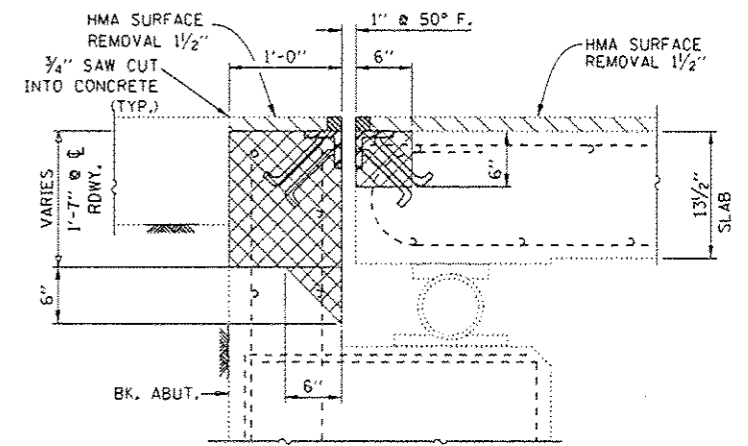
2-14-17 DM

| | | | | | | | | | | |
|---|-----------------------|------------------|---------------------------|---|--------------------------------------|-------------|-------------|---------|--------------|--------------------|
| FILE NAME = | USER NAME = woodhewer | DESIGNED - RW | REVISED - 02/08/2017 RW | STATE OF ILLINOIS DEPARTMENT OF TRANSPORTATION | EAST ABUTMENT REMOVAL DETAILS | F.A.P. RTE. | SECTION | COUNTY | TOTAL SHEETS | SHEET NO. |
| pw\11084810\INTEG\Illinois.gov\PI\DOT\Documents\1007\Office\District 3\Pro\work\DS6\DRAWING\366F\RW\shc-details.dgn | CHECKED - EP | DATE - 1/20/2016 | REVISED - | | | 623 | IGR-11R | LASALLE | 26 | 15 |
| PLOT SCALE = 1/8" = 1'-0" | DATE - 1/20/2016 | REVISED - | SCALE: | | | SHEET 3 | OF 7 SHEETS | STA. | TO STA. | CONTRACT NO. 66F65 |
| PLOT DATE = 2/8/2017 | DATE - 1/20/2016 | REVISED - | ILLINOIS FED. AID PROJECT | | | | | | | |

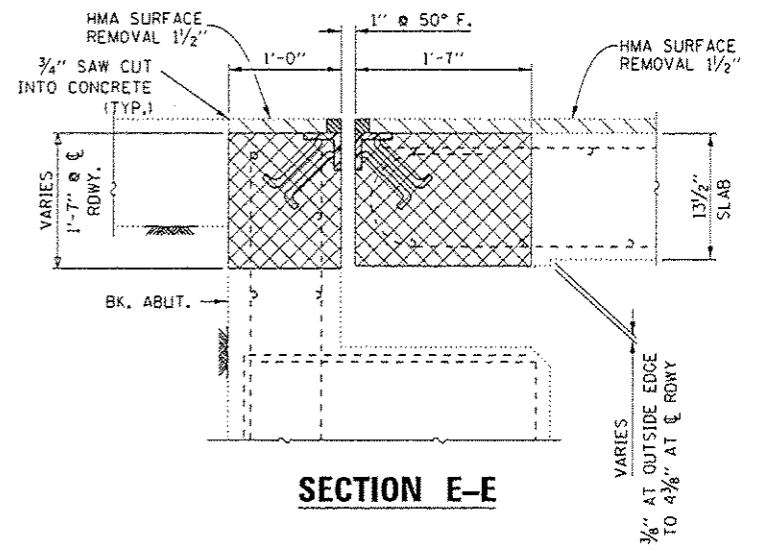


**EXISTING CROSS SECTION
LOOKING WEST**

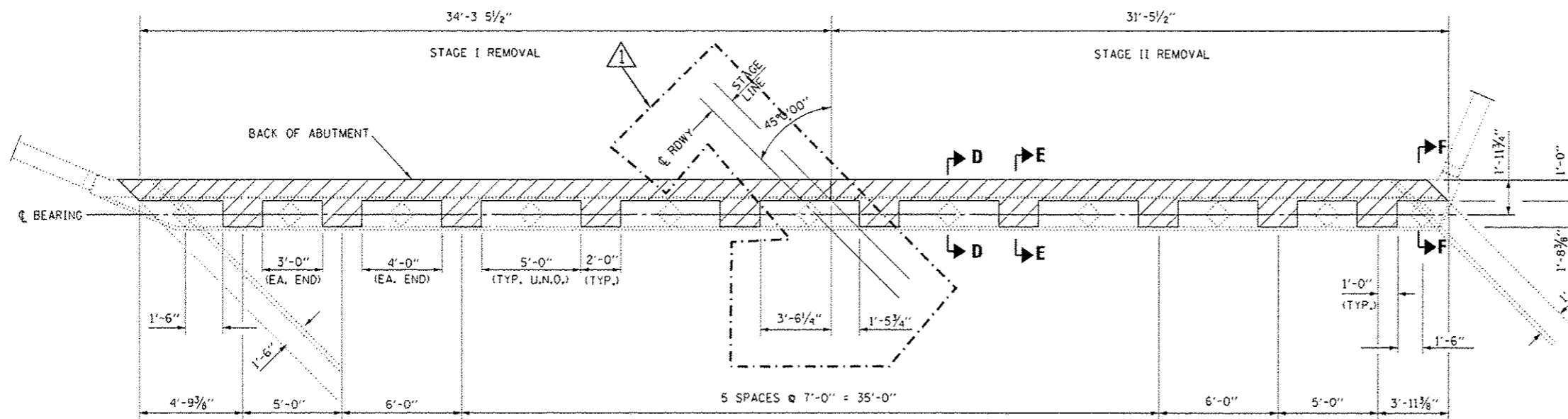
*DIMENSIONS AT RT. ANGLES TO CL ROWY.



SECTION D-D

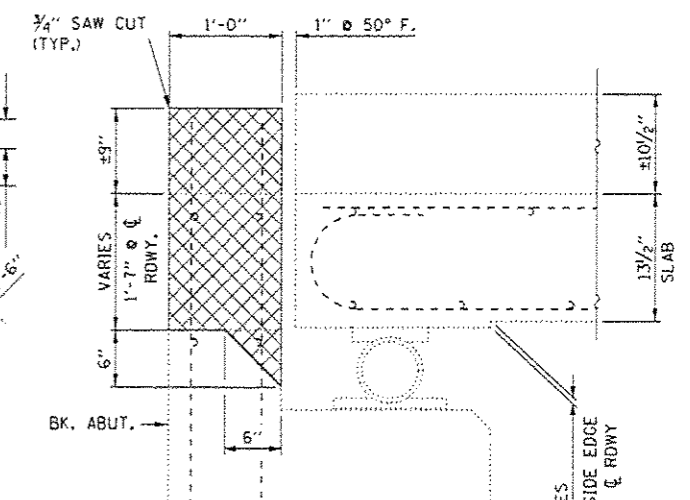


SECTION E-E



EXISTING PLAN

WEST ABUTMENT



SECTION F-F

2-14-17 BM

| | | | |
|---|--|---------------|-------------------------|
| FILE NAME = | USER NAME = woodshenr1 | DESIGNED - RW | REVISED - 02/08/2017 RW |
| \\s:\04\BID\INTEG.all\mca.gov\1007\Documents\1007\Office\District 3\Projects\0366\DRAWING\0366\RW\sh-r-detail.dgn | DRAWING DATA = 0366\RW\sh-r-detail.dgn | CHECKED - EP | REVISED - |
| PLOT SCALE = 1/8" = 1'-0" | DATE = 7/20/2016 | REVISED - | |
| Default | PLOT DATE = 2/9/2017 | | |

STATE OF ILLINOIS
DEPARTMENT OF TRANSPORTATION

WEST ABUTMENT REMOVAL DETAILS

SCALE: SHEET 4 OF 7 SHEETS STA. TO STA.

| F.A.P. RTE. | SECTION | COUNTY | TOTAL SHEETS | SHEET NO. |
|---------------------------|---------|---------|--------------|-----------|
| 623 | (GR-1)R | LASALLE | 26 | 16 |
| CONTRACT NO. 66F65 | | | | |
| ILLINOIS FED. AID PROJECT | | | | |

