

STATE OF ILLINOIS
DEPARTMENT OF TRANSPORTATION

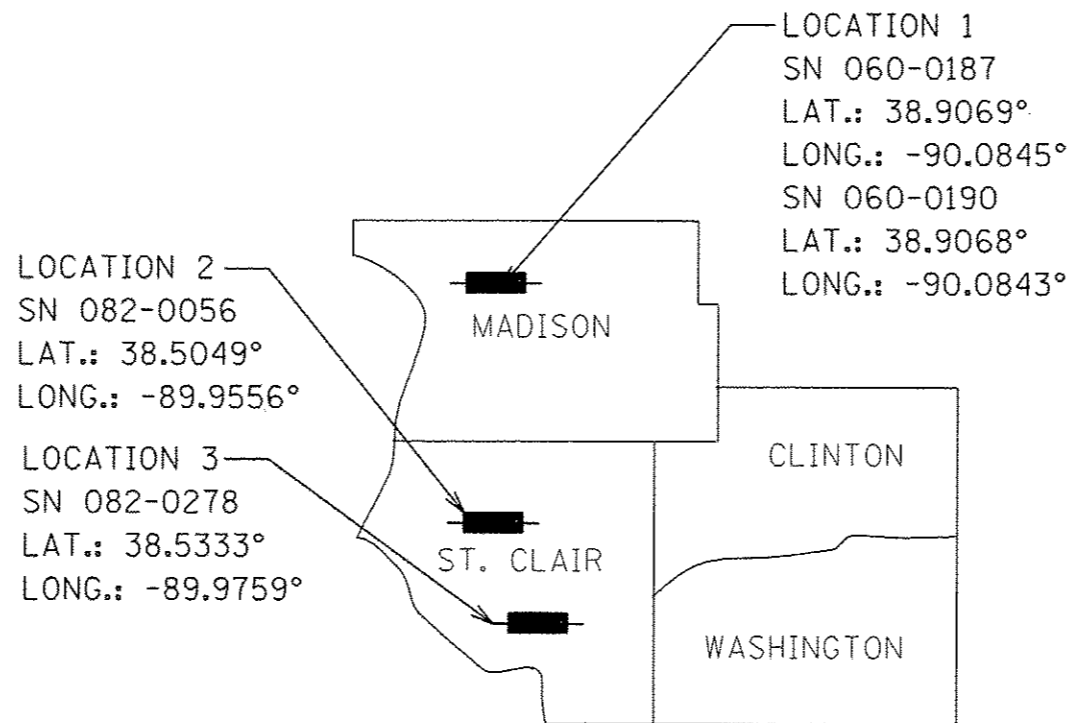
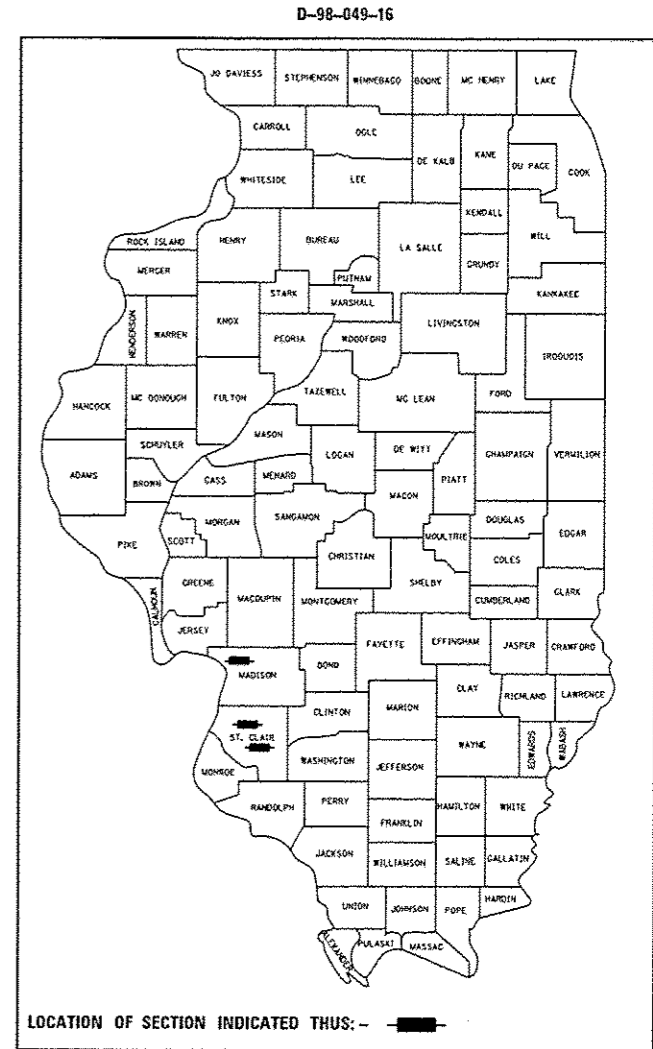
F.A. RTE.	SECTION	COUNTY	TOTAL SHEETS	SHEET NO.
VAR.	DIST 8 SCR 2017-2	ILLINOIS	11	1
CONTRACT NO. 76J66			• MADISON, ST. CLAIR	

FOR INDEX OF SHEETS, SEE SHEET NO. 2

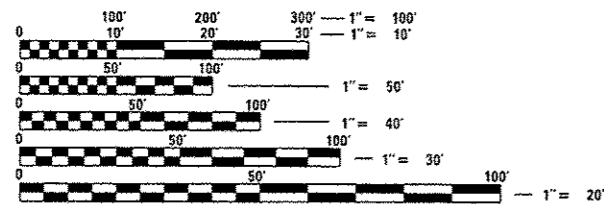
PROPOSED HIGHWAY PLANS

VARIOUS ROUTES
SECTION DIST 8 SCR 2017-2
SCOUR MITIGATION
MADISON AND ST. CLAIR COUNTIES

C-98-043-16



DETAILED LOCATION MAP LOCATED IN PLANS.



FULL SIZE PLANS HAVE BEEN PREPARED USING STANDARD ENGINEERING SCALES. REDUCED SIZED PLANS WILL NOT CONFORM TO STANDARD SCALES. IN MAKING MEASUREMENTS ON REDUCED PLANS, THE ABOVE SCALES MAY BE USED.

J.U.L.I.E.
JOINT UTILITY LOCATION INFORMATION FOR EXCAVATION
1-800-892-0123
OR 811

PROJECT ENGINEER: HERVE GELIN (618) 346-3179
PROJECT MANAGER: BILLIE OWEN (618) 346-3209

CONTRACT NO. 76J66

NET LENGTH OF SECTIONS = 0.04 MILE (4 SPOT IMPROVEMENTS)

STATE OF ILLINOIS
DEPARTMENT OF TRANSPORTATION

SUBMITTED Dec 9 2016
Jeffrey Z. Kamas
REGIONAL ENGINEER

Jan 27 2017
Muhammad M. Adas, P.E.
ENGINEER OF DESIGN AND ENVIRONMENT

Jan 27 2017
Amel Al-Jarrah
DIRECTOR OF PROGRAM DEVELOPMENT

PRINTED BY THE AUTHORITY
OF THE STATE OF ILLINOIS

INDEX OF SHEETS

- 1 COVER SHEET
- 2 INDEX OF SHEETS, HIGHWAY STANDARDS, GENERAL NOTES, COMMITMENTS, ADT
- 3 SUMMARY OF QUANTITIES
- 4-6 LOCATION MAPS
- 7-11 PLAN SHEETS

STANDARDS

- 000001-06
- 001006
- 701001-02
- 701006-05
- 701101-05
- 701106-02
- 701201-04
- 701301-04
- 701901-06

GENERAL NOTES

1. THE CONTRACTOR SHALL VERIFY ALL DIMENSIONS AND CONDITIONS IN THE FIELD PRIOR TO CONSTRUCTION AND ORDERING OF MATERIALS.
2. ILLINOIS STATE LAW REQUIRES A 48-HOUR NOTICE BE GIVEN TO ALL UTILITIES BEFORE DIGGING. FIELD MARKING OF FACILITIES MAY BE OBTAINED BY CONTACTING J.U.L.I.E. OR FOR NON-MEMBERS, THE UTILITY COMPANY DIRECTLY. AGENCIES KNOWN TO HAVE FACILITIES WITHIN THE PROJECT AREA ARE AS FOLLOWS:

SN 060-0187 AND SN 060-0190:

- AMEREN ILLINOIS
- VILLAGE OF BETHALTO
- IL-AMERICAN WATER-ALTON DIST.
- CHATER COMMUNICATIONS, INC.
- ROSEWOOD HEIGHTS SANITARY DISTRICT
- AT&T ILLINOIS

SN 082-0056:

- AT&T ILLINOIS
- CITY OF BELLEVILLE
- CHARTER COMMUNICATIONS, INC.
- CLEARWAVE COMMUNICATIONS
- ILLINOIS AMERICAN WATER COMPANY
- LEVEL (3) COMMUNICATIONS, LLC

SN 082-0278:

- AT&T ILLINOIS
- CITY OF BELLEVILLE
- CHARTER COMMUNICATIONS, INC.
- FIDELITY COMMUNICATIONS ILL, INC.
- ILLINOIS AMERICAN WATER COMPANY
- VILLAGE OF SWANSEA

MEMBERS OF J.U.L.I.E. CALL TOLL FREE (800)-892-0123 OR 811 AND ARE INDICATED BY •. NON J.U.L.I.E. MEMBERS MUST BE NOTIFIED INDIVIDUALLY.

GENERAL NOTES CONTINUED

3. THE ILLINOIS DEPARTMENT OF TRANSPORTATION STRONGLY ENCOURAGES THE PRIME CONTRACTOR AND THEIR APPROVED SUB-CONTRACTORS TO HIRE MINORITY, WOMEN AND DISADVANTAGED INDIVIDUALS FROM ITS FEDERALLY FUNDED HIGHWAY CONSTRUCTION CAREERS TRAINING PROGRAM (HCCTP) TO HELP MEET WORKFORCE AND TRAINEE GOALS. THIS PROGRAM IS TRAINING MINORITIES, WOMEN AND DISADVANTAGED INDIVIDUALS IN HIGHWAY CONSTRUCTION-RELATED SKILLS, E.G., MATH FOR THE TRADES, JOB READINESS, TECHNICAL SKILLS COURSEWORK (CARPENTRY, CONCRETE FLATWORK, BLUEPRINT READING, SITE PLANS, SITE WORK, TOOLS USE, ETC.) AND OSHA 10 HOUR CERTIFICATION, TO PREPARE THEM FOR A CAREER IN THE HIGHWAY CONSTRUCTION TRADES. GRADUATES ARE WELL-TRAINED AND READY TO BECOME PRODUCTIVE ENTRY-LEVEL CONSTRUCTION WORKERS. PLEASE CONTACT THE DISTRICT 8 EEO OFFICE AT 618-346-3360 AND/OR THE HCCTP COORDINATOR AT 618/874-6528 TO LEARN MORE ABOUT THE PROGRAM AND FOR ASSISTANCE IN MEETING WORKFORCE AND TRAINEE GOALS.
4. FLAGGERS SHALL BE PRESENT DURING LANE CLOSURES. NO ADDITIONAL COMPENSATION WILL BE ALLOWED.
5. "TRUCKS ENTERING AND LEAVING" SIGNS SHALL BE REQUIRED AND PLACED ACCORDING TO THE ENGINEERS DISCRETION. NO ADDITIONAL COMPENSATION WILL BE ALLOWED.
6. THE CONTRACTOR IS RESPONSIBLE FOR PROVIDING AND MAINTAINING ACCESS TO WORK AREAS. NO ADDITIONAL COMPENSATION WILL BE ALLOWED.
7. THE CONTRACTOR SHALL BE AWARE OF THE CONDITIONS OF THE 404 PERMIT REGARDING EROSION CONTROL MEASURES AND BE IN COMPLIANCE WITH THEM.
8. IN ORDER TO AVOID EROSION OF THE EXCAVATED AREAS THE CONTRACTOR SHALL HAVE RIPRAP PLACED WITHIN 24 HOURS OF EXCAVATION UNLESS OTHERWISE DIRECTED BY THE ENGINEER DUE TO ADVERSE WEATHER CONDITIONS.
9. PERMANENTLY SEEDED AS DIRECTED BY THE ENGINEER AT THE CONTRACTOR'S EXPENSE.

COMMITMENTS

NO COMMITMENTS

PERTINENT INFORMATION

THE CONTRACTOR SHALL BE AWARE THAT THE "WATER MAIN REMOVAL" AT SN 082-0278 IS A PREVIOUSLY ABANDONED 16" WATER MAIN. THERE IS ALSO A 24" LIVE WATER MAIN IN THE AREA THAT SHALL NOT BE DISTURBED WITH THIS PROJECT.

ADT

LOCATION 1 - SN 060-0187 & 0190
MADISON COUNTY
2015 ADT = 16100 (ACTUAL)
2017 ADT = 16300 (ESTIMATED)
SU = 6.8%
MU = 3.6%

LOCATION 2 - 082-0056
ST. CLAIR COUNTY
2015 ADT = 7800 (ACTUAL)
2017 ADT = 7900 (ESTIMATED)
SU = 5.8%
MU = 1.7%

LOCATION 3 - SN 082-0278
ST. CLAIR COUNTY
2015 ADT = 22800 (ACTUAL)
2017 ADT = 23100 (ESTIMATED)
SU = 1.1%
MU = 0.2%

• MADISON, ST. CLAIR

FILE NAME =	USER NAME = lewska	DESIGNED -	REVISED -	STATE OF ILLINOIS DEPARTMENT OF TRANSPORTATION	INDEX OF SHEETS, HIGHWAY STANDARDS, GENERAL NOTES, COMMITMENTS, ADT	F.A. RTE.	SECTION	COUNTY	TOTAL SHEETS	SHEET NO.
ar\pvc\work\pvc\dot\lewska\d848131\0876J68-sht-over.dgn	DRAWN -	REVISED -	VAR.			DIST 8 SCR 2017-2	•	11	2	
PLOT SCALE = 100.0000' / 1in.	CHECKED -	REVISED -	CONTRACT NO. 76J66							
PLOT DATE = 12/9/2016	DATE -	REVISED -	FED. ROAD DIST. NO. ILLINOIS FED. AID PROJECT							
					SCALE:	SHEET NO.	OF	SHEETS	STA.	TO STA.

08 10 2016

CODE NO.	ITEM	UNIT	TOTAL QUANTITY	MADISON COUNTY		ST. CLAIR COUNTY	
				CONSTRUCTION CODE			
				100% STATE			
				URBAN BRIDGE 0020	URBAN BRIDGE 0020	URBAN BRIDGE 0020	URBAN BRIDGE 0020
S. N. 060-0187	S. N. 060-0190	S. N. 082-0056	S. N. 082-0278				
20300100	CHANNEL EXCAVATION	CU YD	580	270	270	40	
28100107	STONE RIPRAP, CLASS A4	SQ YD	470	235	235		
28100109	STONE RIPRAP, CLASS A5	SQ YD	75				75
28100111	STONE RIPRAP, CLASS A6	SQ YD	650			330	320
28200200	FILTER FABRIC	SQ YD	1290	165	165	330	630
28400100	GABIONS	CU YD	270				270
67100100	MOBILIZATION	LSUM	1	0.25	0.25	0.25	0.25
70100450	TRAFFIC CONTROL AND PROTECTION, STANDARD 701201	LSUM	1			1	
X2810210	STONE RIPRAP, CLASS A5 (SPECIAL)	TON	35				35
X5610700	WATER MAIN REMOVAL	FOOT	30				30
* Z0054400	ROCK FILL	CU YD	80				80

* SPECIALTY ITEM

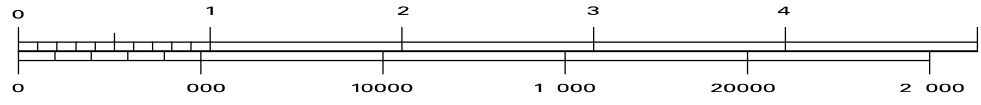
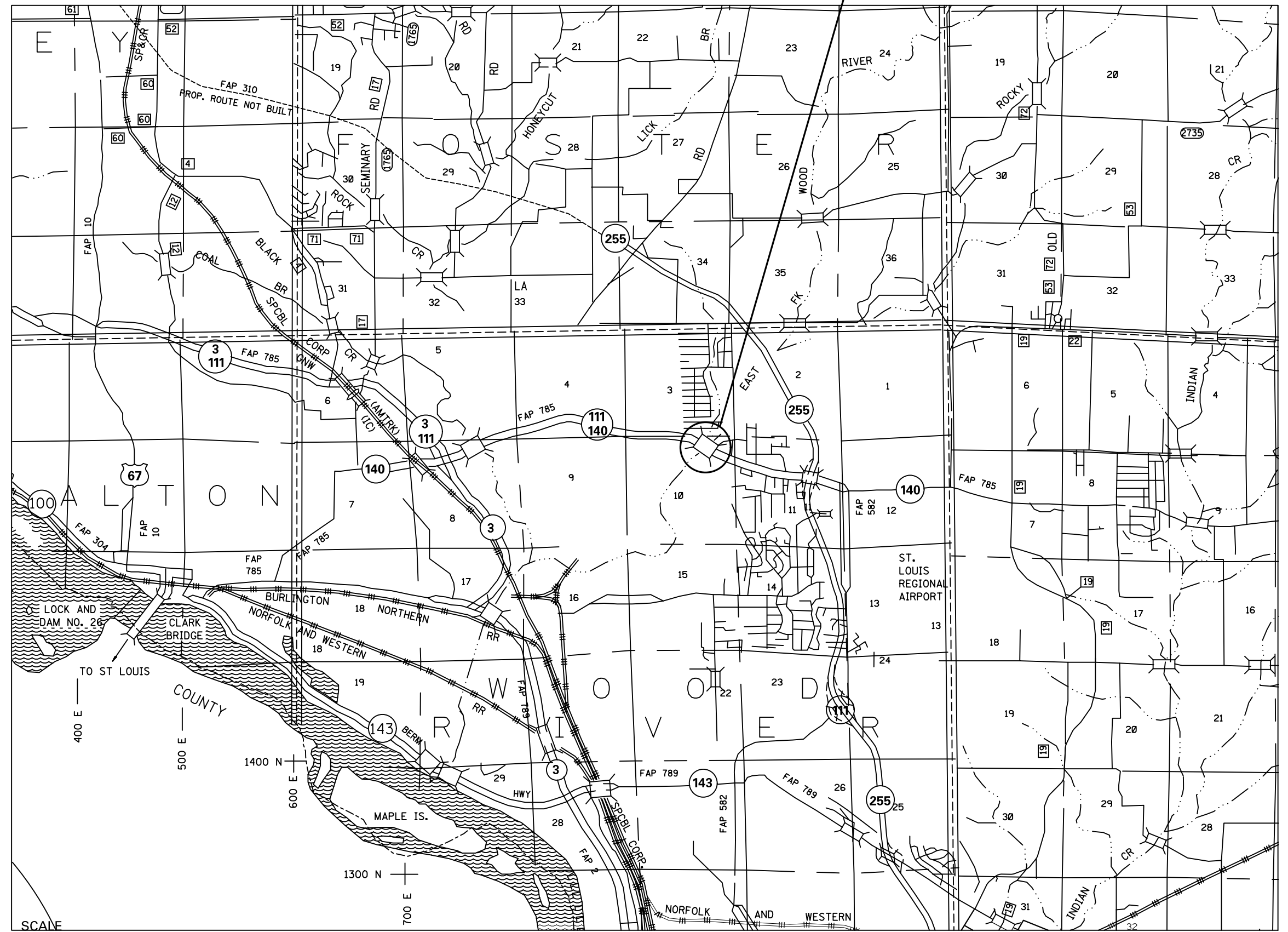
• MADISON, ST. CLAIR

FILE NAME *	USER NAME = Lewiska	DESIGNED -	REVISED -	STATE OF ILLINOIS DEPARTMENT OF TRANSPORTATION	SUMMARY OF QUANTITIES				F.A. RTE.	SECTION	COUNTY	TOTAL SHEETS	SHEET NO.
o:\pvc_work\pvc\dot\Lewiska\d8481131\0876J	8-shr-coover.dgn	DRAWN -	REVISED -						VAR.	DIST 8 SCR 2017-2	•	11	3
	PLOT SCALE = 100.0000' / 1" =	CHECKED -	REVISED -		SCALE: SHEET NO. OF SHEETS STA. TO STA.				FED. ROAD DIST. NO. ILLINOIS FED. AID PROJECT				
	PLOT DATE = 12/9/2016	DATE -	REVISED -		CONTRACT NO. 76J66								

LOCATION 1
SN 060-0187 AND SN 060-0190

R 9 W

T 5 N



FILE NAME =	USER NAME = lewiska	DESIGNED -	REVISED -
et:\pw\work\p\idot\lewiska\d0481131\0876366-sht-cover.dgn		DRAWN -	REVISED -
		CHECKED -	REVISED -
		DATE -	REVISED -
	PLOT SCALE = 100.0000' / in.		
	PLOT DATE = 12/9/2016		

STATE OF ILLINOIS
DEPARTMENT OF TRANSPORTATION

LOCATION 1 MAP

SCALE:	SHEET NO.	OF SHEETS	STA.	TO STA.
--------	-----------	-----------	------	---------

F.A. RTE.	SECTION	COUNTY	TOTAL SHEETS	SHEET NO.
VAR.	DIST 8 SCR 2017-2	*	11	4
CONTRACT NO. 76J66				
FED. ROAD DIST. NO. ILLINOIS FED. AID PROJECT				

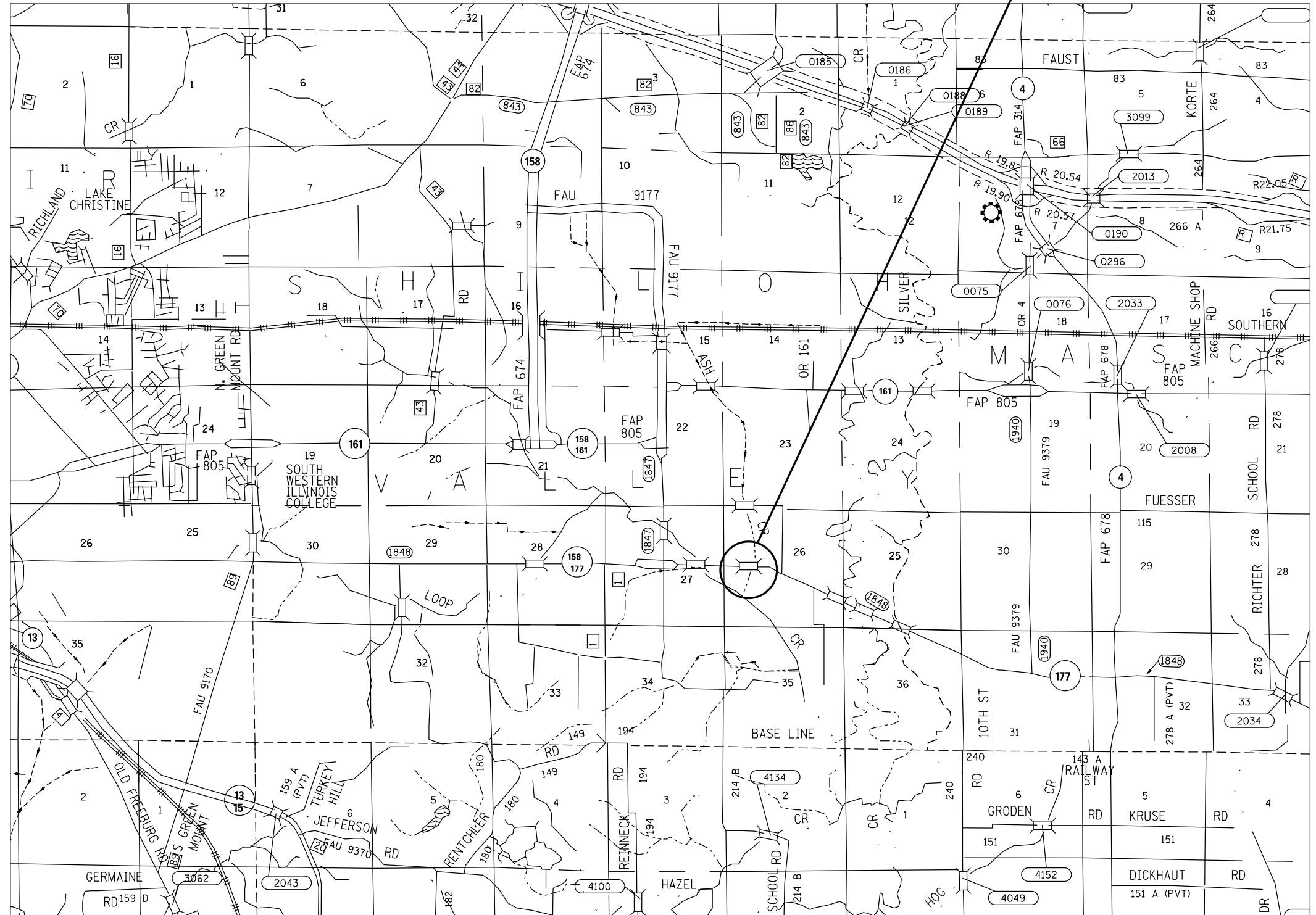
* MADISON, ST. CLAIR

R 7 W

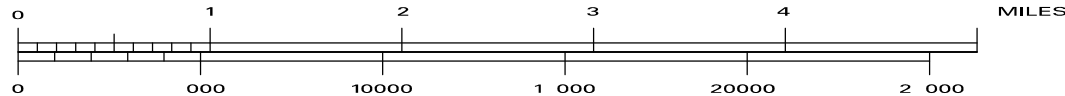
LOCATION 2
SN 082-0056



T 1 N



SCALE



• MADISON, ST. CLAIR

FILE NAME =	USER NAME = lewiska	DESIGNED -	REVISED -
et:\pw_work\p\dot\lewiska\d0481131\0876366-sht-cover.dgn		DRAWN -	REVISED -
	PLOT SCALE = 100.0000' / in.	CHECKED -	REVISED -
	PLOT DATE = 12/9/2016	DATE -	REVISED -

**STATE OF ILLINOIS
DEPARTMENT OF TRANSPORTATION**

LOCATION 2 MAP

SCALE: SHEET NO. OF SHEETS STA. TO STA.

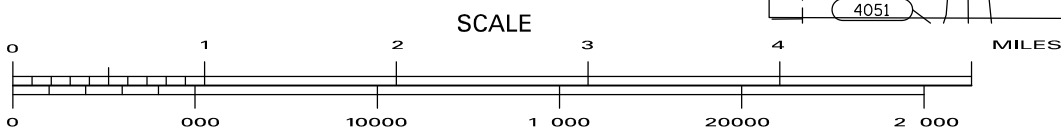
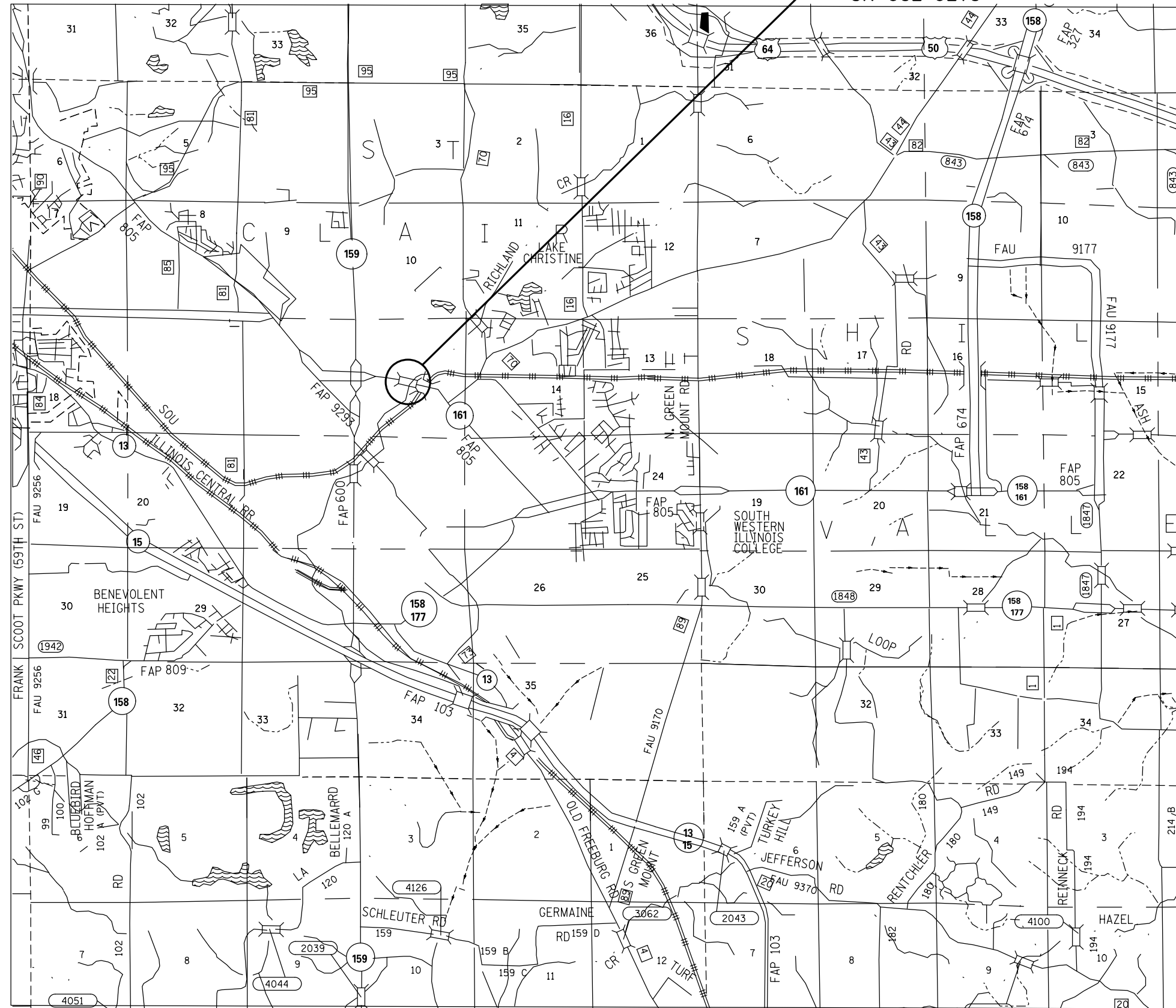
F.A. RTE.	SECTION	COUNTY	TOTAL SHEETS	SHEET NO.
VAR.	DIST 8 SCR 2017-2	•	11	5
			CONTRACT NO. 76J66	
FED. ROAD DIST. NO.		ILLINOIS FED. AID PROJECT		



T 1 N

R 8 W

LOCATION 3
SN 082-0278



• MADISON, ST. CLAIR

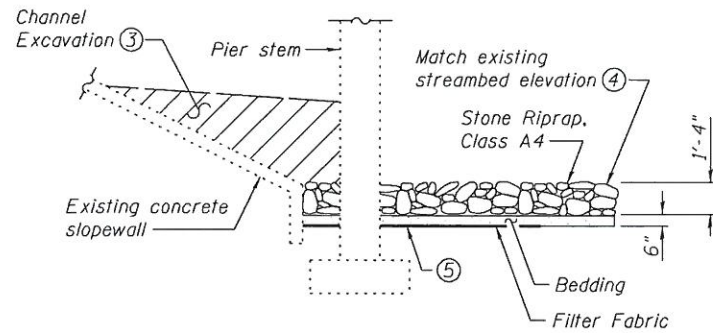
FILE NAME =	USER NAME = lewiska	DESIGNED -	REVISED -
ct:\pw\work\p1dot\lewiska\d0481131\0876J66-sht-cover.dgn		DRAWN -	REVISED -
		CHECKED -	REVISED -
		DATE -	REVISED -

**STATE OF ILLINOIS
DEPARTMENT OF TRANSPORTATION**

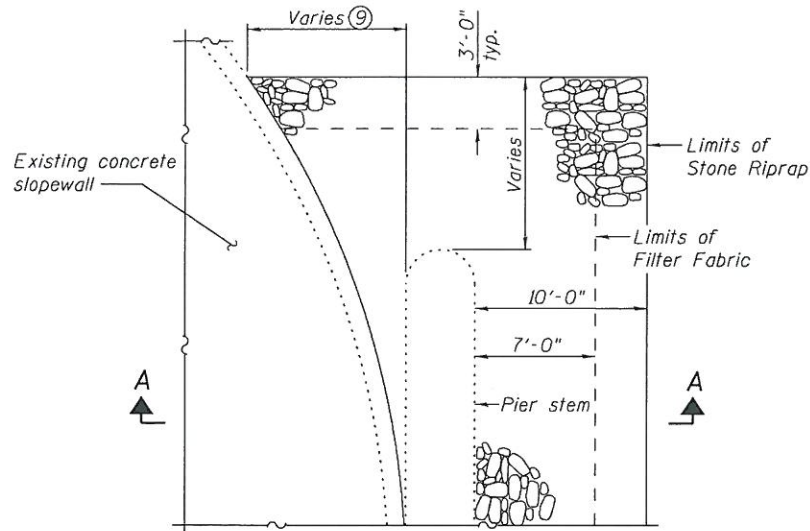
LOCATION 3 MAP			
SCALE:	SHEET NO.	OF SHEETS	STA. TO STA.

F.A. RTE.	SECTION	COUNTY	TOTAL SHEETS	SHEET NO.
VAR.	DIST 8 SCR 2017-2	•	11	6
CONTRACT NO. 76J66				
FED. ROAD DIST. NO. ILLINOIS FED. AID PROJECT				

Existing Structure: S.N. 060-0187 and S.N. 060-0190 each consist of a three span continuous steel stringer superstructure supported on open abutments founded on precast concrete piles and protected by concrete slopewalls and solid wall concrete piers with spread footings founded on timber piles.



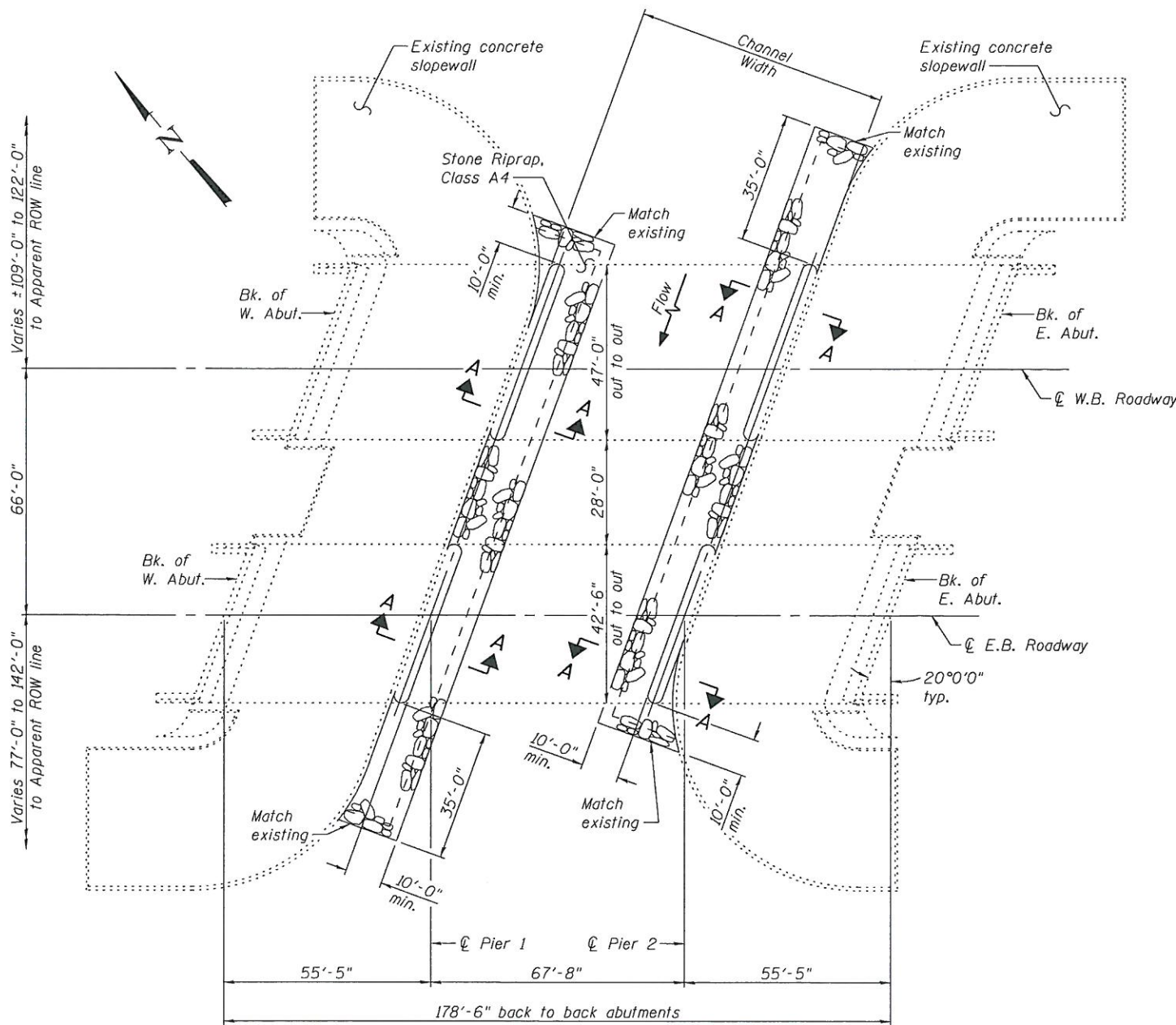
SECTION A-A



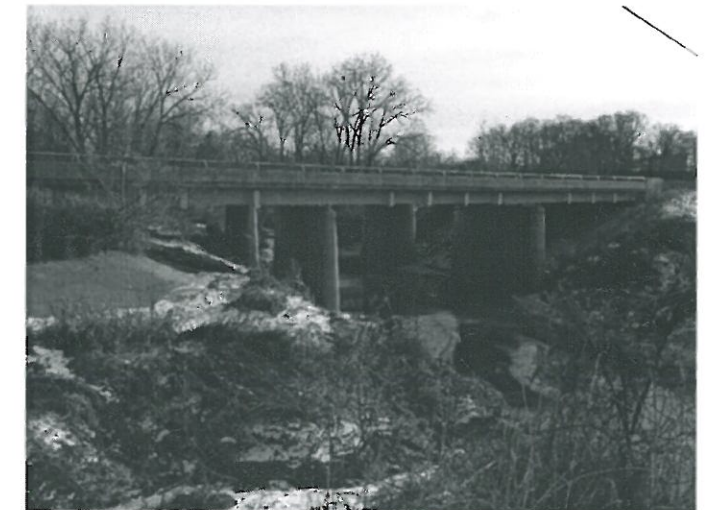
RIPRAP PROTECTION AT PIER

Notes:

- ① The Contractor shall field verify existing dimensions, details, and conditions affecting new construction and make necessary approved adjustments prior to construction or ordering of materials. Such variations shall not be cause for additional compensation for a change in scope of the work, however, the Contractor will be paid for the quantity actually furnished based upon the unit price bid for the work.
- ② Layout of the scour mitigation system may be varied to suit ground conditions in the field as directed by the Engineer.
- ③ Remove excess silt deposits behind piers and on slopewalls as directed by the Engineer. This work shall be paid for at the contract unit price for Channel Excavation.
- ④ Grade streambed so that the top of the Stone Riprap approximately matches the existing stream profile as directed by the Engineer. The cost of removing and disposing of existing riprap, brick, block, rubble, soil, or other materials to meet this requirement is included in the cost of Stone Riprap, Class A4.
- ⑤ At the piers, no excavation shall be allowed below the top of the footing.
- ⑥ Contractor to locate existing underground utilities. Where existing underground utilities conflict with riprap placement, the Contractor shall adjust the layout as directed by the Engineer.
- ⑦ Elevation view shown as of February 10, 2016. Actual conditions may vary.
- ⑧ Estimated quantities. Actual quantities to be determined in the field.
- ⑨ Stone Riprap shall extend to the toe of the slopewall.



PLAN



ELEVATION VIEW ⑦
(Looking Northeast)

TOTAL BILL OF MATERIAL ⑧

CODE NO.	ITEM	UNIT	TOTAL
20300100	Channel Excavation	Cu. Yd.	540
28100107	Stone Riprap, Class A4	Sq. Yd.	470
28200206	Filter Fabric	Sq. Yd.	330

DANIEL GEORGE LUTZ
 062-060383
 LICENSED PROFESSIONAL ENGINEER
 OF ILLINOIS

DATE: 11/4/2016
 EXPIRATION: 11/30/2017

IL ROUTE 111/140
OVER EAST FORK OF WOOD RIVER
STRUCTURE NO. 060-0187 (E.B.)
STRUCTURE NO. 060-0190 (W.B.)

FILE NAME = #FILEL#

OATES ASSOCIATES
 Engineering + Architecture
 ILLINOIS DESIGN FIRM LICENSE NO. 184.001115

USER NAME =	DESIGNED - SJN	REVISED -
PLLOT SCALE =	CHECKED - JAD	REVISED -
PLLOT DATE = #DATE#	DRAWN - SJN	REVISED -
	CHECKED - JAD	REVISED -

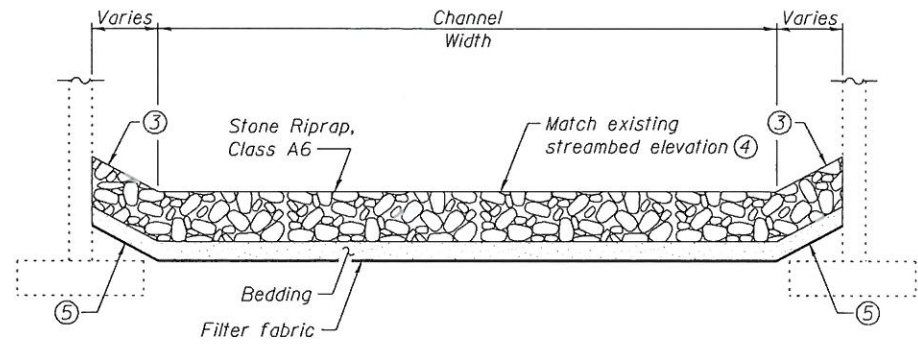
STATE OF ILLINOIS
DEPARTMENT OF TRANSPORTATION

GENERAL PLAN AND ELEVATION
LOCATION 1

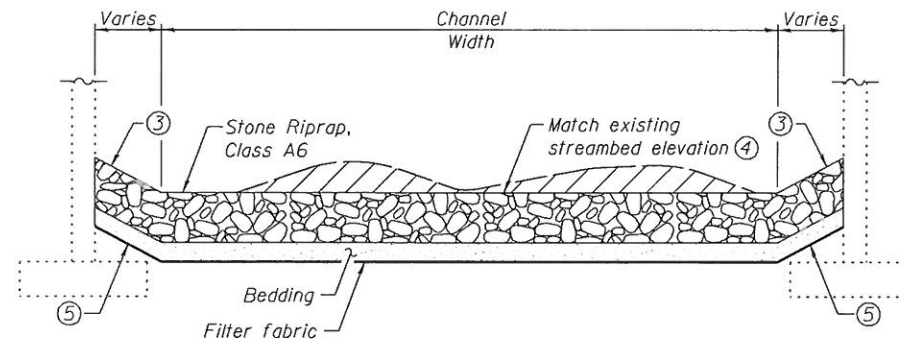
SHEET NO. 1 OF 1 SHEETS

F.A. RTE.	SECTION	COUNTY	TOTAL SHEETS	SHEET NO.
VAR	DIST 8 SCR 2017-2	MADISON	11	7
			CONTRACT NO. 76J66	
ILLINOIS FED. AID PROJECT				

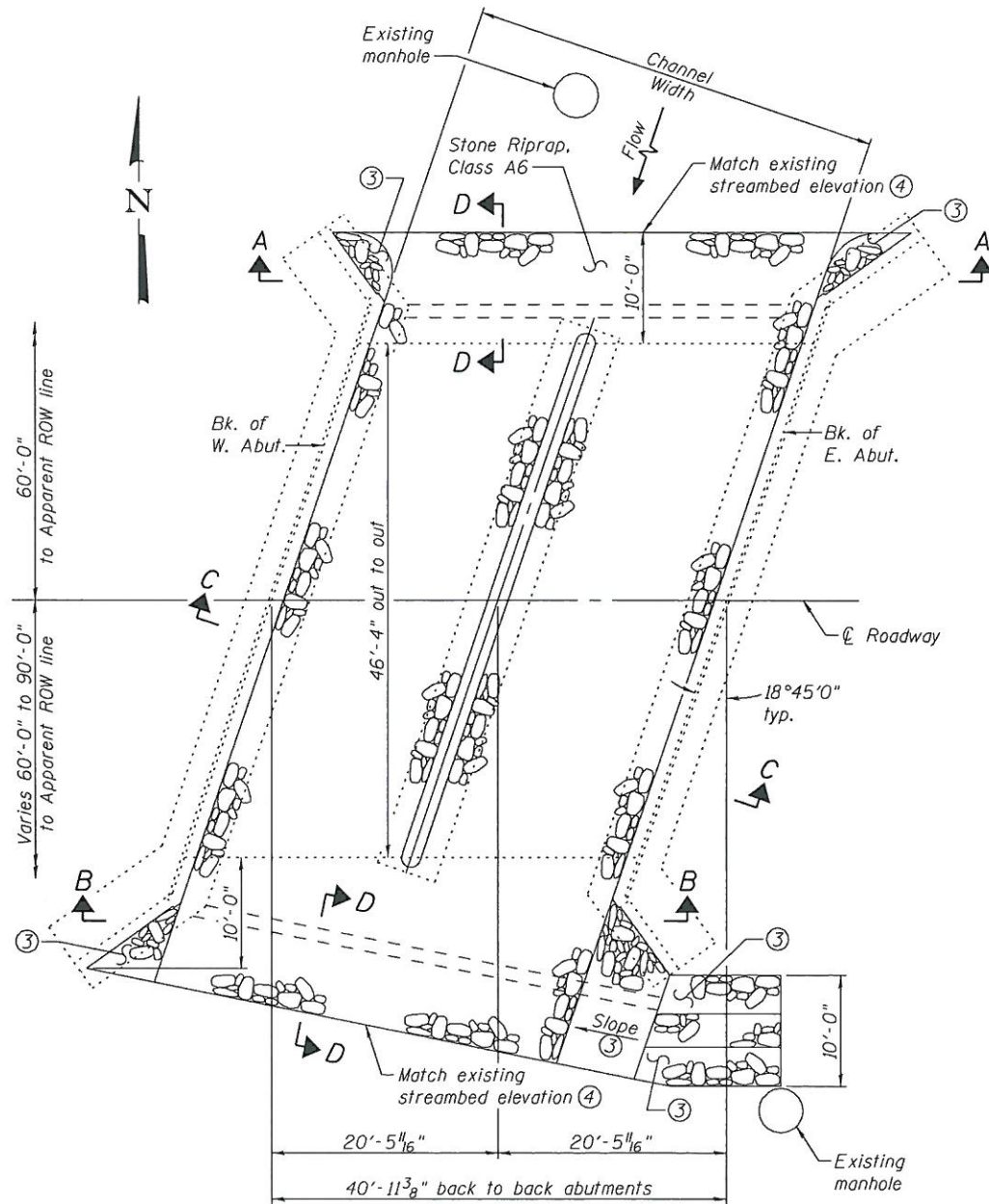
Existing Structure: S.N. 082-0056 consists of a two span reinforced concrete slab superstructure supported on closed abutments with spread footings founded on steel piles and a solid wall concrete pier with a spread footing founded on steel piles.



SECTION A-A

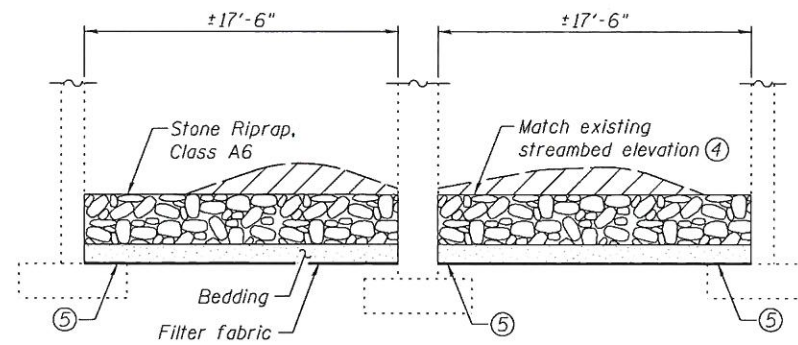


SECTION B-B ⑨

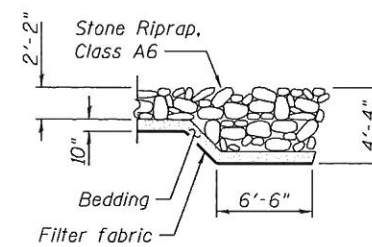


PLAN

Channel Excavation



SECTION C-C ⑨



SECTION D-D

- Notes:
- ① The Contractor shall field verify existing dimensions, details, and conditions affecting new construction and make necessary approved adjustments prior to construction or ordering of materials. Such variations shall not be cause for additional compensation for a change in scope of the work, however, the Contractor will be paid for the quantity actually furnished based upon the unit price bid for the work.
 - ② Layout of the scour mitigation system may be varied to suit ground conditions in the field as directed by the Engineer.
 - ③ Grade channel bank to a slope that will provide a stable base for riprap as directed by the Engineer. Cost included in Stone Riprap, Class A6.
 - ④ Grade streambed so that the top of the Stone Riprap approximately matches the existing stream profile as directed by the Engineer. The cost of removing and disposing of existing riprap, brick, block, rubble, soil, or other materials to meet this requirement is included in the cost of Stone Riprap, Class A6.
 - ⑤ At the abutments and pier, no excavation shall be allowed below the top of the footing.
 - ⑥ Contractor to locate existing underground utilities. Where existing underground utilities conflict with riprap placement, the Contractor shall adjust the layout as directed by the Engineer.
 - ⑦ Elevation view shown as of February 8, 2016. Actual conditions may vary.
 - ⑧ Estimated quantities. Actual quantities to be determined in the field.
 - ⑨ Remove excess silt deposits in both spans as directed by the Engineer. This work shall be paid for at the contract unit price for Channel Excavation.



ELEVATION VIEW ⑦
(Looking South)

TOTAL BILL OF MATERIAL ⑧

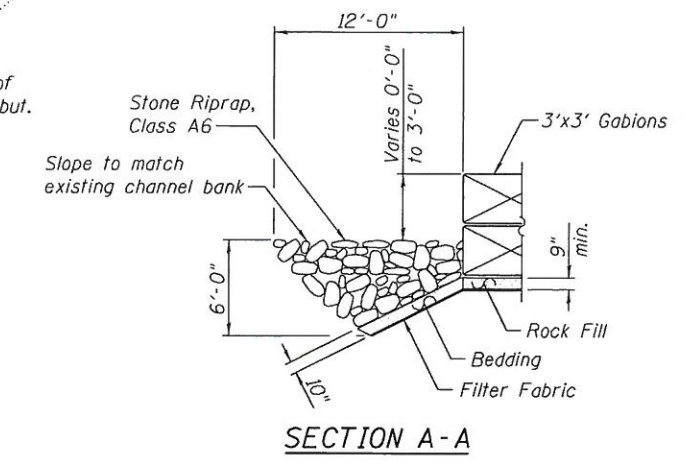
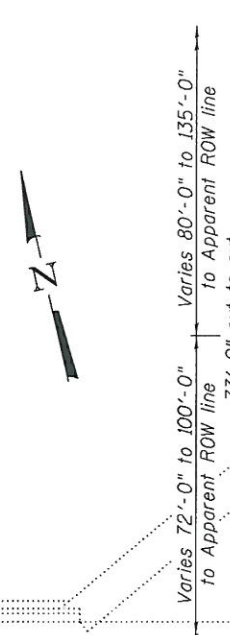
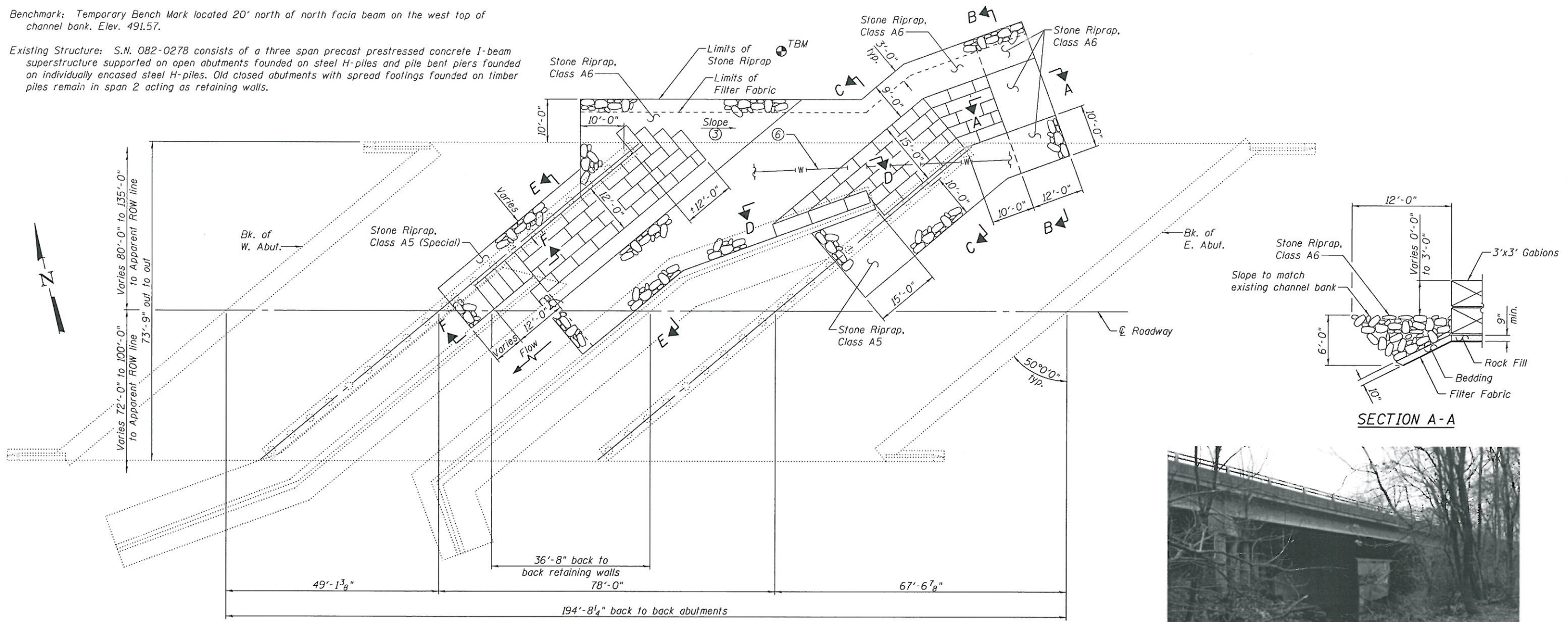
CODE NO.	ITEM	UNIT	TOTAL
20300100	Channel Excavation	Cu. Yd.	40
28100111	Stone Riprap, Class A6	Sq. Yd.	330
28200200	Filter Fabric	Sq. Yd.	330

Daniel George Lutz
062-060383
LICENSED PROFESSIONAL ENGINEER OF ILLINOIS
DATE: 11/4/2016
EXPIRATION: 11/30/2017

IL ROUTE 177 OVER UNNAMED CREEK
STRUCTURE NO. 082-0056

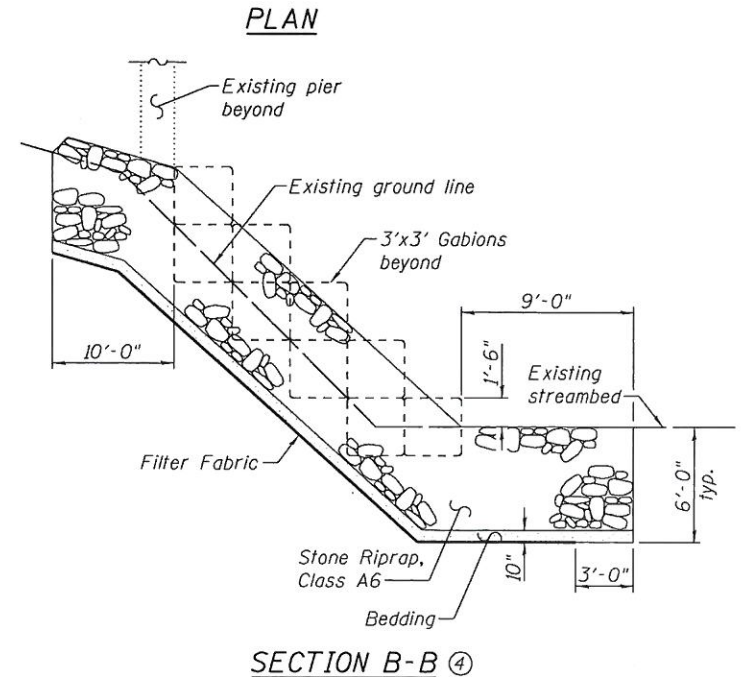
Benchmark: Temporary Bench Mark located 20' north of north facia beam on the west top of channel bank. Elev. 491.57.

Existing Structure: S.N. 082-0278 consists of a three span precast prestressed concrete I-beam superstructure supported on open abutments founded on steel H-piles and pile bent piers founded on individually encased steel H-piles. Old closed abutments with spread footings founded on timber piles remain in span 2 acting as retaining walls.



ELEVATION VIEW ⑦
(Looking South)

- Notes:
- ① The Contractor shall field verify existing dimensions, details, and conditions affecting new construction and make necessary approved adjustments prior to construction or ordering of materials. Such variations shall not be cause for additional compensation for a change in scope of the work, however, the Contractor will be paid for the quantity actually furnished based upon the unit price bid for the work.
 - ② Layout of the scour mitigation system may be varied to suit ground conditions in the field as directed by the Engineer.
 - ③ Grade channel bank to a slope that will provide a stable base for riprap as directed by the Engineer. Cost included in Stone Riprap, Class A6.
 - ④ Grade streambed so that the top of the Stone Riprap approximately matches the existing stream profile or elevations shown as directed by the Engineer. Grade channel banks to allow for placement of Gabions matching the elevations and dimensions shown. The cost of removing and disposing of existing riprap, brick, block, rubble, soil, or other materials to meet this requirement is included in the cost of Stone Riprap, Class A6 and Gabions.
 - ⑤ Contractor to locate existing underground utilities. Where existing underground utilities conflict with riprap placement, the Contractor shall adjust the layout as directed by the Engineer.
 - ⑥ Remove exposed and abandoned 16" ductile iron water main to a distance of 1'-0" beyond or below the proposed improvements. See Special Provisions.
 - ⑦ Elevation view shown as of February 8, 2016. Actual conditions may vary.
 - ⑧ Estimated quantities. Actual quantities to be determined in the field.
 - ⑨ For Section C-C, D-D, E-E, and F-F, see sheet 2 of 3.

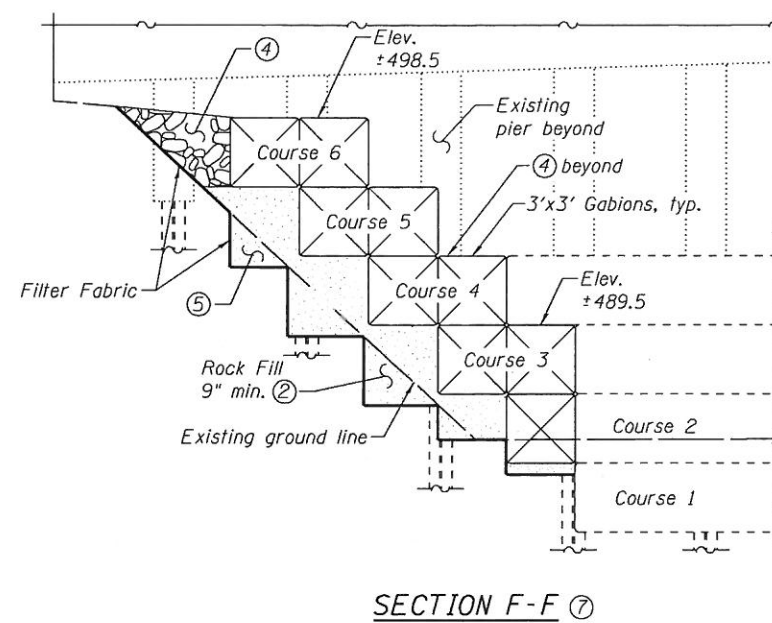
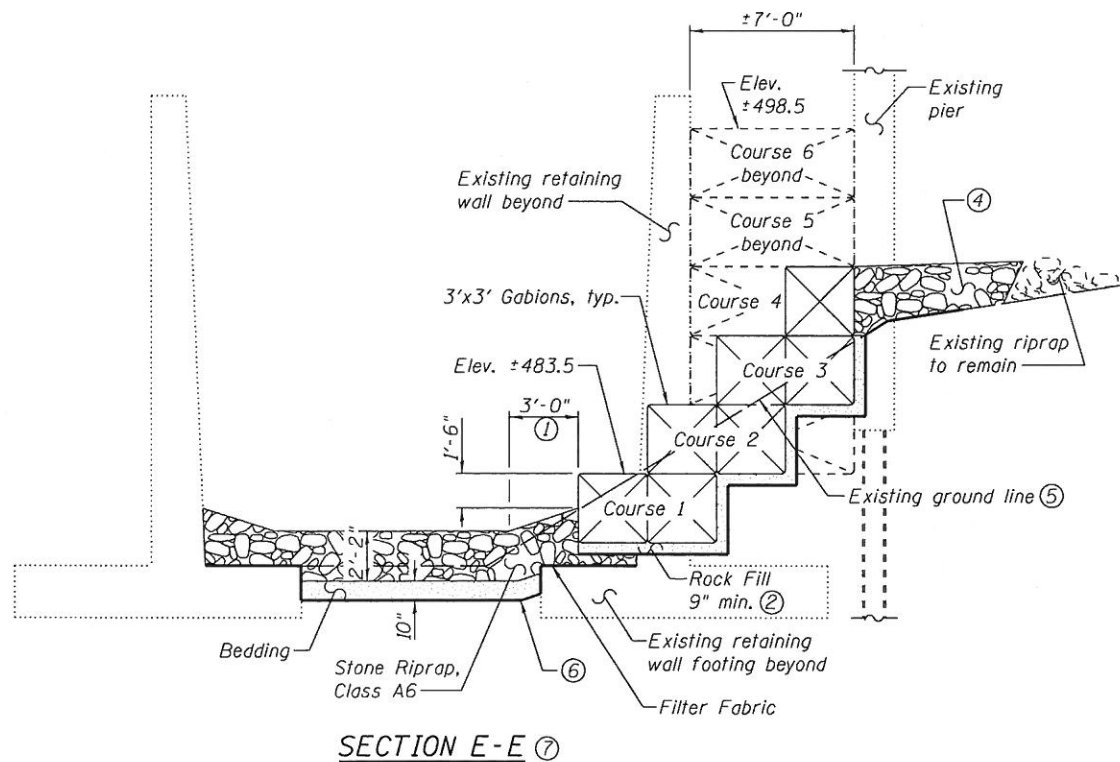
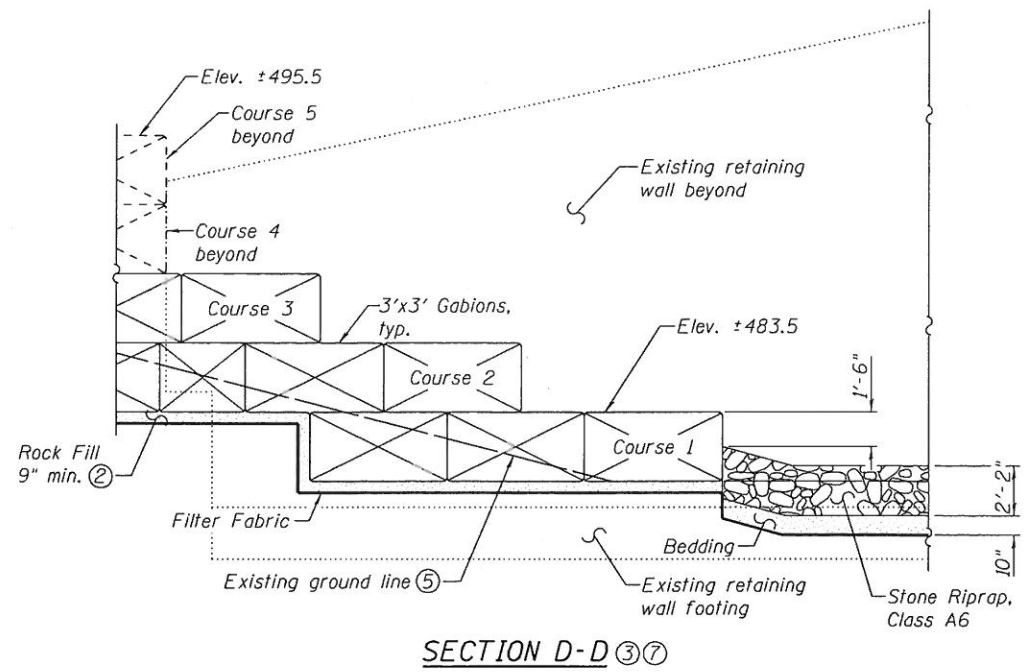
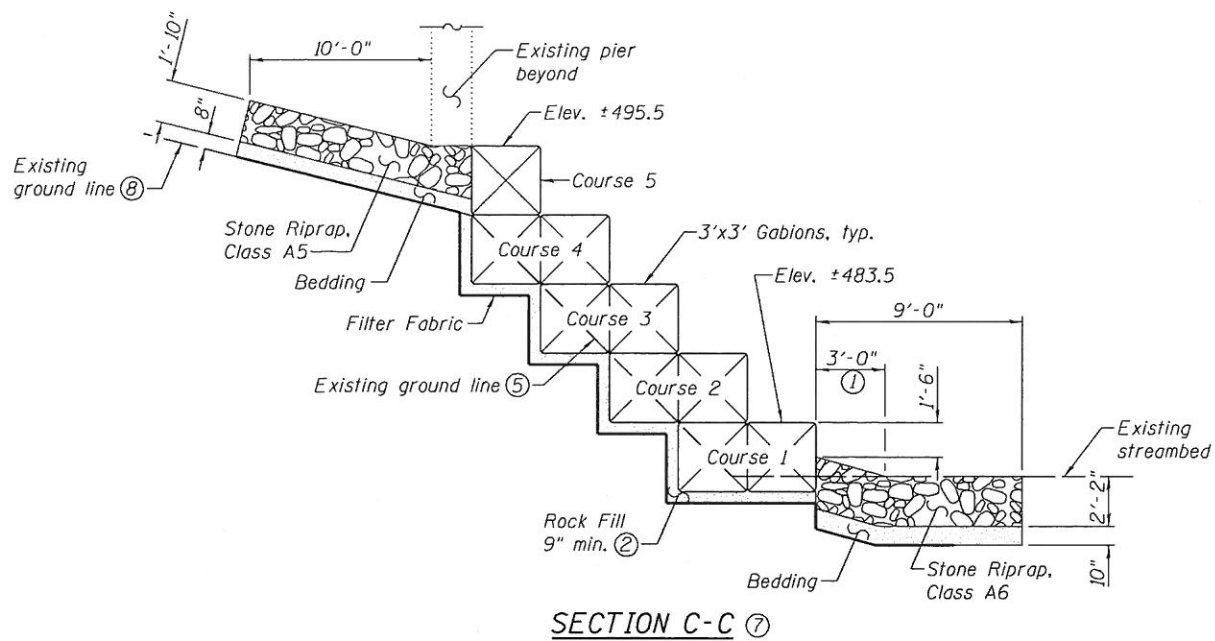


TOTAL BILL OF MATERIAL ⑧

CODE NO.	ITEM	UNIT	TOTAL
28100109	Stone Riprap, Class A5	Sq. Yd.	75
28100111	Stone Riprap, Class A6	Sq. Yd.	320
28200200	Filter Fabric	Sq. Yd.	630
28400100	Gabions	Cu. Yd.	270
20054400	Rock Fill	Cu. Yd.	80
2810210	Stone Riprap, Class A5 (Special)	Ton	35
X5610700	Water Main Removal	Foot	30

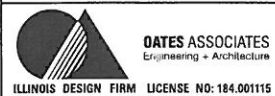
Professional Engineer Seal for Daniel George Lutz, License No. 062-060383, State of Illinois. Includes signature and dates: DATE: 11/29/2016, EXPIRATION: 11/30/2017.

IL ROUTE 161 OVER RICHLAND CREEK
STRUCTURE NO. 082-0278



- Notes:
- ① Slope riprap to existing streambed elevation or elevation shown within 3'-0" from the face of Gabions.
 - ② See Special Provisions.
 - ③ Gabions from Section C-C not shown for clarity.
 - ④ Infill with Stone Riprap, Class A5 (Special) as directed by the Engineer. To be paid for as Stone Riprap, Class A5 (Special).
 - ⑤ Remove existing riprap to ground line. Cost included in Gabions.
 - ⑥ No excavation shall be allowed below the bottom of the existing retaining wall footings.
 - ⑦ Grade streambed so that the top of the Stone Riprap approximately matches the existing stream profile or elevations shown as directed by the Engineer. Grade channel banks to allow for placement of Gabions matching the elevations and dimensions shown. The cost of removing and disposing of existing riprap, brick, block, rubble, soil, or other materials to meet this requirement is included in the cost of Stone Riprap, Class A6 and Gabions.
 - ⑧ Remove existing riprap to ground line. Cost included in Stone Riprap, Class A5.

FILE NAME = \\0ates-f40\data\11041\011 - Scour Mitigation Plans\Structural\082-0278 - IL I61 over Richland Creek\082-0278-002-Construction Details.dgn



USER NAME =	DESIGNED - SJN	REVISED -
PLOT SCALE =	CHECKED - DGL	REVISED -
PLOT DATE = 11/29/2016	DRAWN - SJN	REVISED -
	CHECKED - DGL	REVISED -

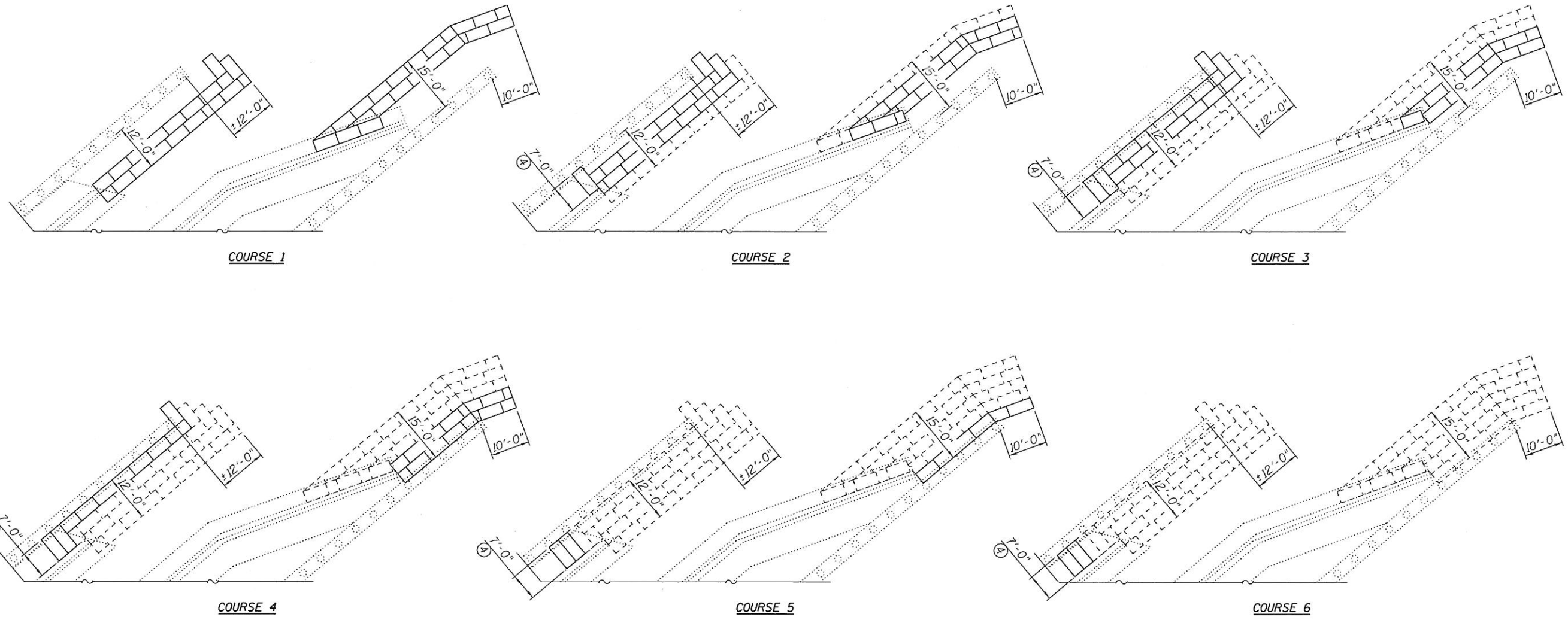
**STATE OF ILLINOIS
DEPARTMENT OF TRANSPORTATION**

**CONSTRUCTION DETAILS
LOCATION 3**

SHEET NO. 2 OF 3 SHEETS

F.A.P. RTE.	SECTION	COUNTY	TOTAL SHEETS	SHEET NO.
VAR	DIST 8 SCR 2017-2	ST. CLAIR	11	10
CONTRACT NO. 76J66				
ILLINOIS FED. AID PROJECT				

FILE NAME = \\00000-f:\01\041\041\011 - Scour Mitigation Plans\Structure\082-0278 - IL 161 Lower Richland Creek\0820278-003-Construction Details.dgn



GABION CONSTRUCTION SEQUENCE ①②③

- Notes:
- ① Gabion baskets shall be staggered so that adjacent interior joints do not fall within 1'-6" of each other.
 - ② Riprap limits not shown for clarity.
 - ③ Typical Gabions as shown are assumed to be 3'x3'x6' unless noted otherwise. Modify lengths as necessary at corners and ends.
 - ④ 3'x3'x7' Gabions.

USER NAME =	DESIGNED - SJN	REVISED -
PLOT SCALE =	CHECKED - DGL	REVISED -
PLOT DATE = 11/29/2016	DRAWN - SJN	REVISED -
	CHECKED - DGL	REVISED -

F.A.P. RTE.	SECTION	COUNTY	TOTAL SHEETS	SHEET NO.
VAR	DIST 8 SCR 2017-2	ST. CLAIR	11	11
CONTRACT NO. 76J66				
ILLINOIS FED. AID PROJECT				