

STATE OF ILLINOIS  
DEPARTMENT OF TRANSPORTATION

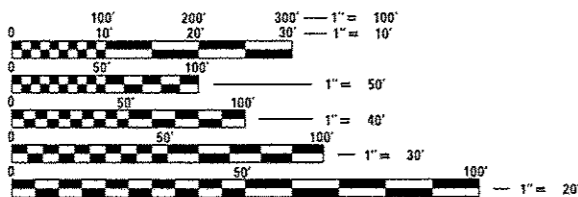
**PROPOSED  
HIGHWAY PLANS**

FOR INDEX OF SHEETS, SEE SHEET NO. 2

TRAFFIC DATA

NA

**VARIOUS LOCATIONS  
DIST 8 RESURFACING 2017-1  
BITUMINOUS SURFACE TREATMENT - A2  
COUNTY: MADISON, GREENE, JERSEY, & CALHOUN (VARIOUS)  
C-98-050-16**

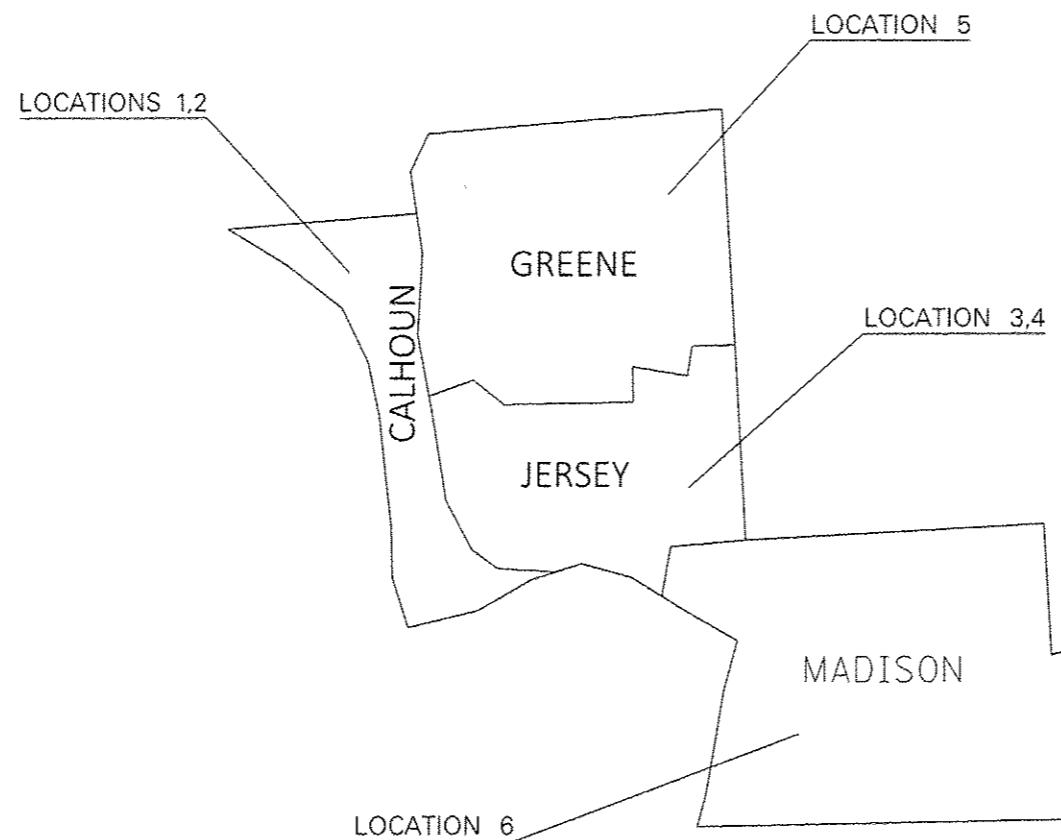


FULL SIZE PLANS HAVE BEEN PREPARED USING STANDARD ENGINEERING SCALES. REDUCED SIZED PLANS WILL NOT CONFORM TO STANDARD SCALES. IN MAKING MEASUREMENTS ON REDUCED PLANS, THE ABOVE SCALES MAY BE USED.

J.U.L.I.E.  
JOINT UTILITY LOCATION INFORMATION FOR EXCAVATION  
1-800-892-0123  
OR 811

PROJECT ENGINEER: TIM PADGETT (618) 346-3325  
PROJECT MANAGER: PHILIP COPPERNOLL (618) 346-3480

CONTRACT NO. 76J72



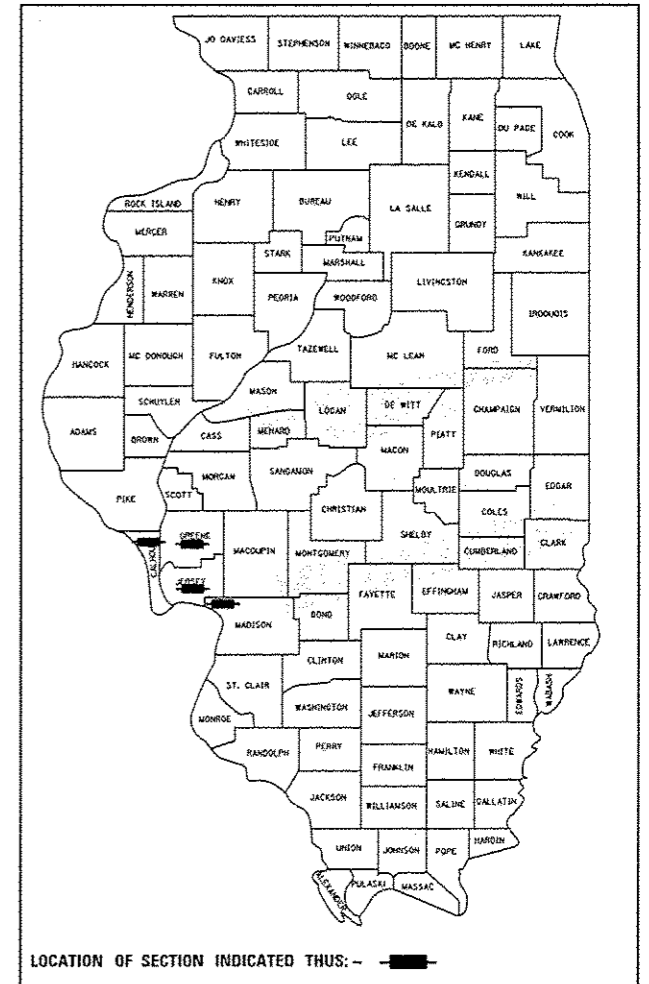
(NOT TO SCALE)



F.A. RTE.	SECTION	COUNTY	TOTAL SHEETS	SHEET NO.
*	DIST 8 RESURFACING 2017-1	VARIOUS	9	1
		ILLINOIS	CONTRACT NO. 76J72	

\*VARIOUS

D-98-056-16



LOCATION OF SECTION INDICATED THUS: - [thick black line] -

STATE OF ILLINOIS  
DEPARTMENT OF TRANSPORTATION

SUBMITTED Dec 9, 2016  
Jeffrey Z. Kamis REGIONAL ENGINEER

Jan 27, 2017  
Maureen M. Addis, P.E. ENGINEER OF DESIGN AND ENVIRONMENT

Jan 27, 2017  
Amelia [Signature] DIRECTOR OF PROGRAM DEVELOPMENT

**PRINTED BY THE AUTHORITY  
OF THE STATE OF ILLINOIS**

INDEX OF SHEETS

- 1. COVER SHEET
- 2. INDEX, HIGHWAY STANDARDS, GENERAL NOTES & COMMITMENTS
- 3. SUMMARY OF QUANTITIES
- 4-9. LOCATION MAP, LOCATION DETAILS

HIGHWAY STANDARDS

- 000001-06 STANDARD SYMBOLS, ABBREVIATIONS, & PATTERNS
- 001006 DECIMAL OF AN INCH & OF A FOOT
- 701001-02 OFF-RD OPERATIONS, 2L, 2W MORE THAN 15' AWAY
- 701006-05 OFF-RD OPERATIONS, 2L, 2W, 15' TO 24" FROM PAVEMENT EDGE
- 701011-04 OFF-RD MOVING OPERATIONS, 2L, 2W, DAY ONLY
- 701306-03 LANE CLOSURE, 2L, 2W, SLOW MOVING OPERATIONS DAY ONLY, FOR SPEEDS = 45MPH
- 701311-03 LANE CLOSURE 2L, 2W MOVING OPERATIONS DAY ONLY
- 701901-06 TRAFFIC CONTROL DEVICES

GENERAL NOTES

1. ILLINOIS STATE LAW REQUIRES A 48-HOUR NOTICE TO BE GIVEN TO UTILITIES BEFORE DIGGING. FIELD MARKING OF FACILITIES MAY BE OBTAINED BY CONTACTING J.U.L.I.E. (1-800-892-0123 OR 811) OR FOR NON-MEMBERS, THE UTILITY COMPANY DIRECTLY.
2. THE CONTRACTOR AND THE ENGINEER SHALL BE AWARE THAT NO SURVEY WAS PERFORMED FOR THIS PROJECT. THE STATIONING, TOPOGRAPHY, AND QUANTITIES SHOWN IN THE PLANS WERE CREATED USING MICROFILM AND FIELD MEASUREMENTS. ALL SHALL BE ASSUMED TO BE APPROXIMATE. THE CONTRACTOR SHALL VERIFY DIMENSIONS AND CONDITIONS IN THE FIELD PRIOR TO CONSTRUCTION AND ORDERING OF MATERIALS.
3. THE DEPARTMENT STRONGLY ENCOURAGES THE PRIME CONTRACTOR AND THEIR APPROVED SUB-CONTRACTORS TO HIRE MINORITY, WOMEN AND DISADVANTAGED INDIVIDUALS FROM ITS FEDERALLY FUNDED HIGHWAY CONSTRUCTION CAREERS TRAINING PROGRAM (HCCTP) TO HELP MEET WORKFORCE AND TRAINEE GOALS. THIS PROGRAM IS TRAINING MINORITIES, WOMEN AND DISADVANTAGED INDIVIDUALS IN HIGHWAY CONSTRUCTION RELATED SKILLS, E.G., MATH FOR THE TRADES, JOB READINESS, TECHNICAL SKILLS COURSEWORK (CARPENTRY, CONCRETE FLATWORK, BLUEPRINT READING, SITE PLANS, SITE WORK, TOOLS USE, ETC.) AND OSHA 10 HOUR CERTIFICATION, TO PREPARE THEM FOR A CAREER IN THE HIGHWAY CONSTRUCTION TRADES. GRADUATES ARE WELL-TRAINED AND READY TO BECOME PRODUCTIVE ENTRY-LEVEL CONSTRUCTION WORKERS. CONTACT THE DISTRICT 8 EEO OFFICE AT 618-346-3360 AND/OR THE HCCTP COORDINATOR AT 618-874-6528 TO LEARN MORE ABOUT THE PROGRAM AND FOR ASSISTANCE IN MEETING WORKFORCE AND TRAINEE GOALS.
4. "ROAD CONSTRUCTION AHEAD" SIGNS SHALL BE PLACED AT INTERCHANGES, ENTRANCES AND SIDE STREETS WHERE WORK IS BEING CONDUCTED AS DIRECTED BY THE RESIDENT ENGINEER. ALL CONSTRUCTION SIGNS SHALL BE FLUORESCENT ORANGE. THIS SHALL BE INCLUDED IN THE COST OF THE TRAFFIC CONTROL AND PROTECTION. THESE SIGNS SHALL BE 48" X 48".
5. THE CONTRACTOR SHALL BE AWARE THAT THERE ARE MANHOLES AND VALVES AND DRAINS LOCATED WITHIN THE RESURFACING LIMITS. CARE SHALL BE TAKEN IN THESE LOCATIONS DURING OPERATIONS.

6. A FLAGGER SHALL BE REQUIRED AT ALL TIMES WHEN WORKERS OR EQUIPMENT ARE ENCROACHING THE LANE OF TRAFFIC.
7. THE ROADWAY SHALL REMAIN OPEN TO TRAFFIC DURING CONSTRUCTION. NO OVERNIGHT LANE CLOSURES WILL BE ALLOWED ON THIS PROJECT.
8. PAINT PAVEMENT MARKINGS AND TEMPORARY RAISED REFLECTED PAVEMENT MARKINGS WILL BE PLACED AT LOCATIONS WITH EXISTING PAVEMENT MARKINGS AND SHALL BE PLACED TO MATCH EXISTING OR AS DIRECTED BY RESIDENT.
9. THE IDOT MAINTENANCE YARDS, BRIDGE/FERRY PARKING LOCATIONS SHALL BE COMPLETED TO THE SATISFACTION OF THE MAINTENANCE FIELD TECHNICIAN. WORK SHALL BE CONDUCTED BETWEEN 7:00AM AND 3:30PM. YARD TECHNICIANS SHALL BE NOTIFIED 7 DAYS PRIOR TO THE START OF WORK.

- HARDIN BRIDGE (618)576-2316
- BRUSSELS FERRY (618)786-3636
- JERSEYVILLE YARD (618)498-2723
- KAMPSVILLE FERRY (618)653-4518
- CARROLLTON YARD (217)942-5112
- GODFREY YARD (618)444-2376

COMMITMENTS

NONE

\* VARIOUS

FILE NAME =	USER NAME = LaemonVE	DESIGNED -	REVISED -	<b>STATE OF ILLINOIS DEPARTMENT OF TRANSPORTATION</b>	<b>INDEX, HIGHWAY STANDARDS, GENERAL NOTES, AND COMMITMENTS</b>	F.A. RTE.	SECTION	COUNTY	TOTAL SHEETS	SHEET NO.	
pw\11\084EBID\INTEG\11\illinois.gov\PIDOT\Documents\IDOT\Office\Districts\8\Projects\0875-DRAWING\DATA\60\sheet\0875J72-shr-cover	PLLOT SCALE = 180.0000 ' / in.	CHECKED -	REVISED -			• DB RESURFACING 2017-1	VARIOUS	9	2		
Default	PLLOT DATE = 12/14/2016	DATE -	REVISED -			CONTRACT NO.					
						SCALE:	SHEET	OF	SHEETS	STA.	TO

100 %  
STATE

CONSTRUCTION CODE

CODE NO.	ITEM	UNIT	TOTAL QUANTITY	CONSTRUCTION CODE
				VARIOUS ROADWAY 0005 RURAL
40300200	BITUMINOUS MATERIALS (PRIME COAT)	TON	49.2	49.2
40300400	BITUMINOUS MATERIALS (COVER AND SEAL COATS)	TON	91.7	91.7
40300500	COVER COAT AGGREGATE	TON	314.5	314.5
40300600	SEAL COAT AGGREGATE	TON	314.5	314.5
67100100	MOBILIZATION	LSUM	1	1
70100460	TRAFFIC CONTROL AND PROTECTION, STANDARD 701306	LSUM	1	1

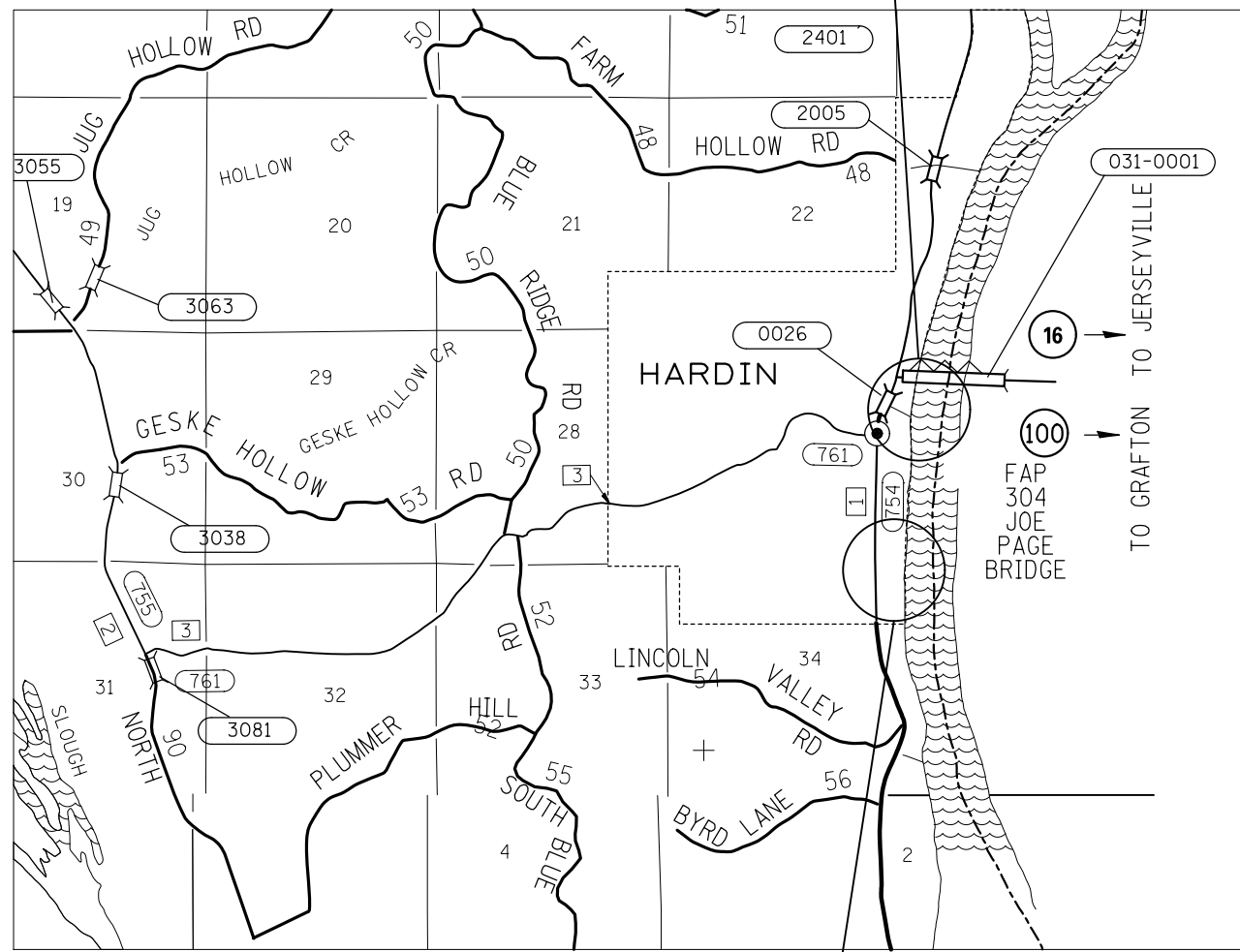
6

\* VARIOUS

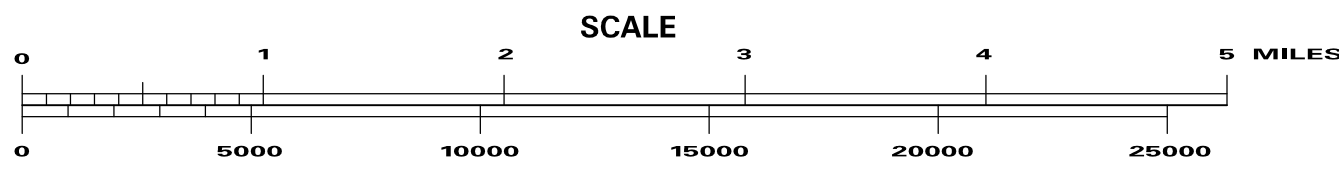
FILE NAME =	USER NAME = LeemonVE	DESIGNED -	REVISED -	<b>STATE OF ILLINOIS DEPARTMENT OF TRANSPORTATION</b>	<b>SUMMARY OF QUANTITIES</b>				F.A. RTE.	SECTION	COUNTY	TOTAL SHEETS	SHEET NO.
pu\\vlr84EBIDINTEG\illinois.gov\PI\DOT\Documents\DOT Offices\District 8\Projects\087-DRAWING\DATA\CAD\sheet\087GJ72-ght-coover	DRAWING NO. = 087GJ72-ght-coover	CHECKED -	REVISED -						*	DB RESURFACING 2017-1	VARIOUS	9	3
Default	PLLOT SCALE = 100.0000' / 1"	DATE -	REVISED -		SCALE:	SHEET	OF	SHEETS	STA.	TO STA.	ILLINOIS		
	PLLOT DATE = 12/14/2016										CONTRACT NO. 76J72		



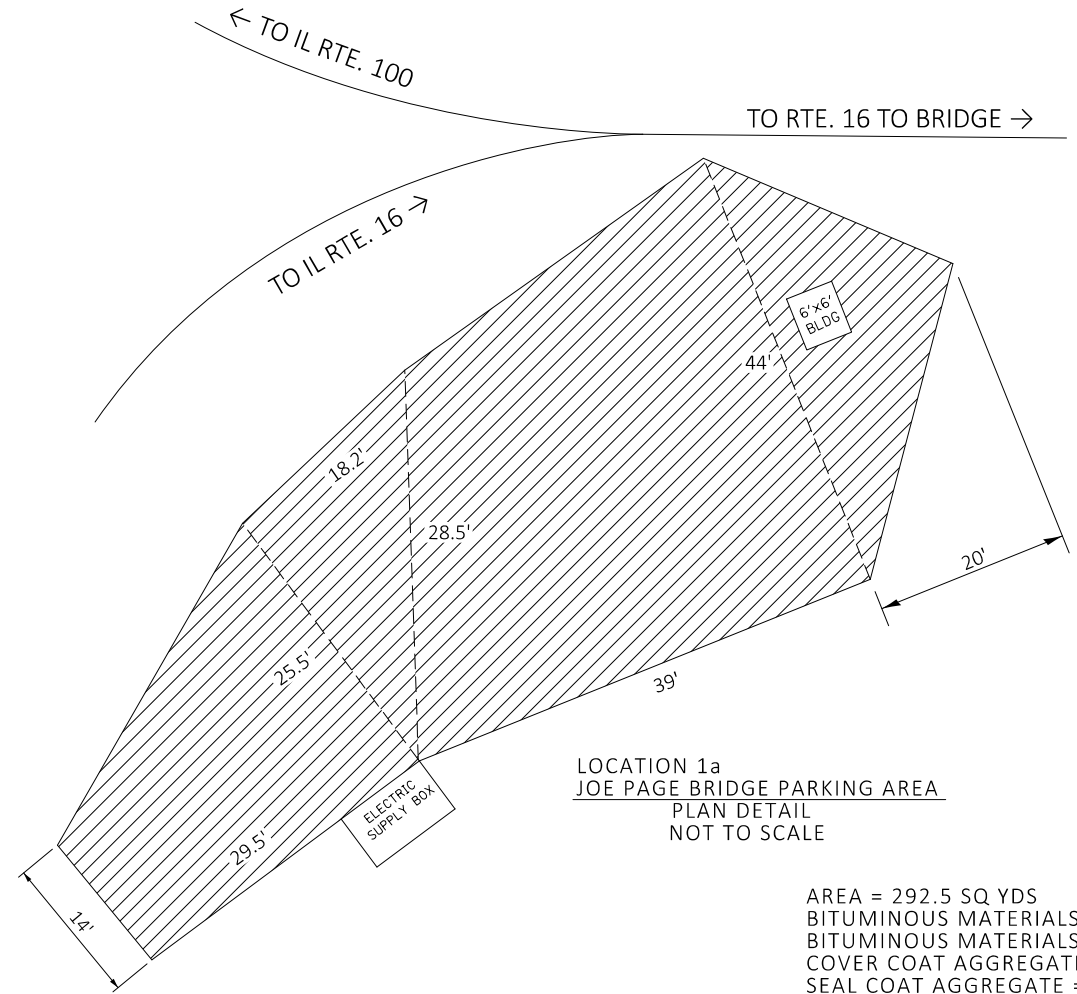
JOE PAGE BRIDGE PARKING AREA  
 39° 09' 36.40" N  
 90° 36' 57.98" W



MAINTENANCE SHED  
 39° 09' 30.19" N  
 90° 37' 01.61" W

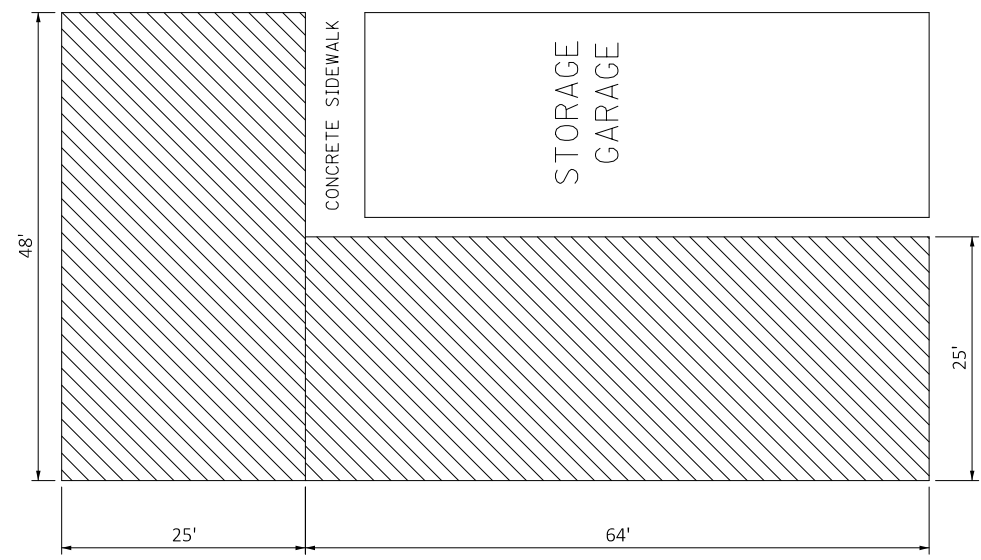


LOCATION MAP



LOCATION 1a  
 JOE PAGE BRIDGE PARKING AREA  
 PLAN DETAIL  
 NOT TO SCALE

AREA = 292.5 SQ YDS  
 BITUMINOUS MATERIALS (PRIME COAT) = 0.46T  
 BITUMINOUS MATERIALS (COVER & SEAL COAT) = 0.86T  
 COVER COAT AGGREGATE = 2.93T  
 SEAL COAT AGGREGATE = 2.93T



LOCATION 1b  
 MAINTENANCE SHED  
 PLAN DETAIL  
 NOT TO SCALE

AREA = 311.11 SQ YDS  
 BITUMINOUS MATERIALS (PRIME COAT) = 0.49T  
 BITUMINOUS MATERIALS (COVER & SEAL COAT) = 0.90T  
 COVER COAT AGGREGATE = 3.11T  
 SEAL COAT AGGREGATE = 3.11T

A2 BITUMINOUS SURFACE TREATMENT  
 \* VARIOUS

FILE NAME =	USER NAME = LeemonVE	DESIGNED -	REVISED -
pw:\IL\084EBID\INTEG\Illinois.gov\PWIDOT\Documents\IDOT Offices\District 8\Projects\0876\DRAWING\DATA\CAD\Sheets\0876J72-sht-cover.dwg		DRAWN -	REVISED -
Default	PLOT SCALE = 100.0000' / 1in.	CHECKED -	REVISED -
	PLOT DATE = 12/14/2016	DATE -	REVISED -

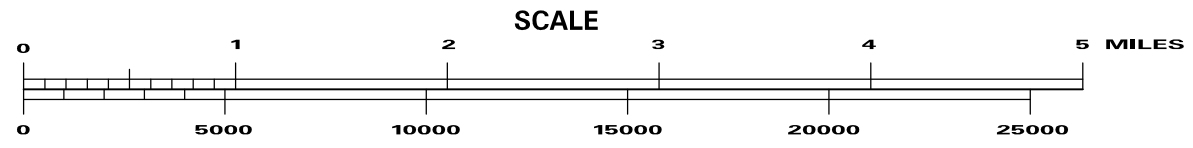
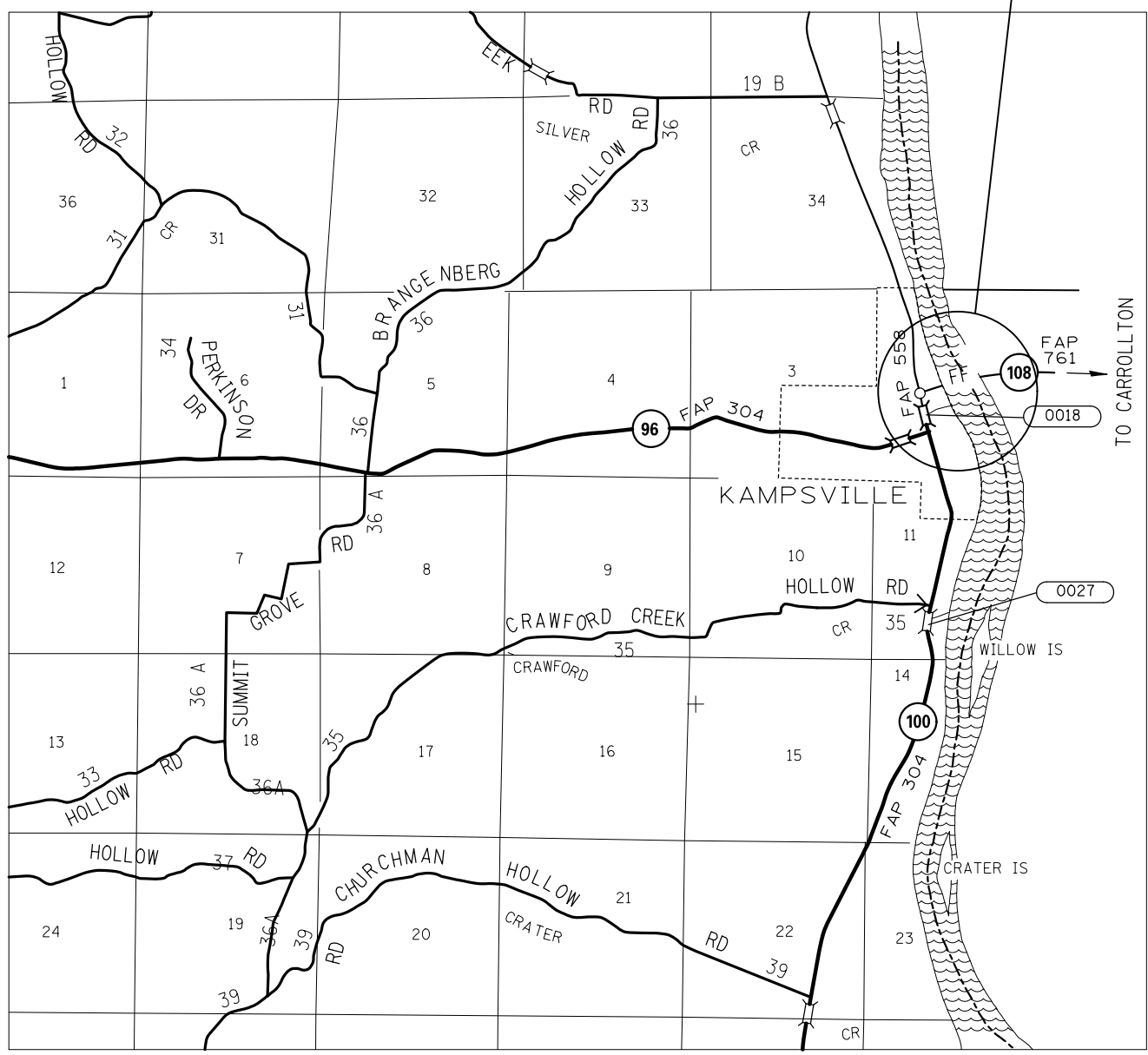
STATE OF ILLINOIS  
 DEPARTMENT OF TRANSPORTATION

LOCATION #1  
 JOE PAGE BRIDGE PARKING AREA & MAINTENANCE SHED DETAIL  
 SCALE: SHEET OF SHEETS STA. TO STA.

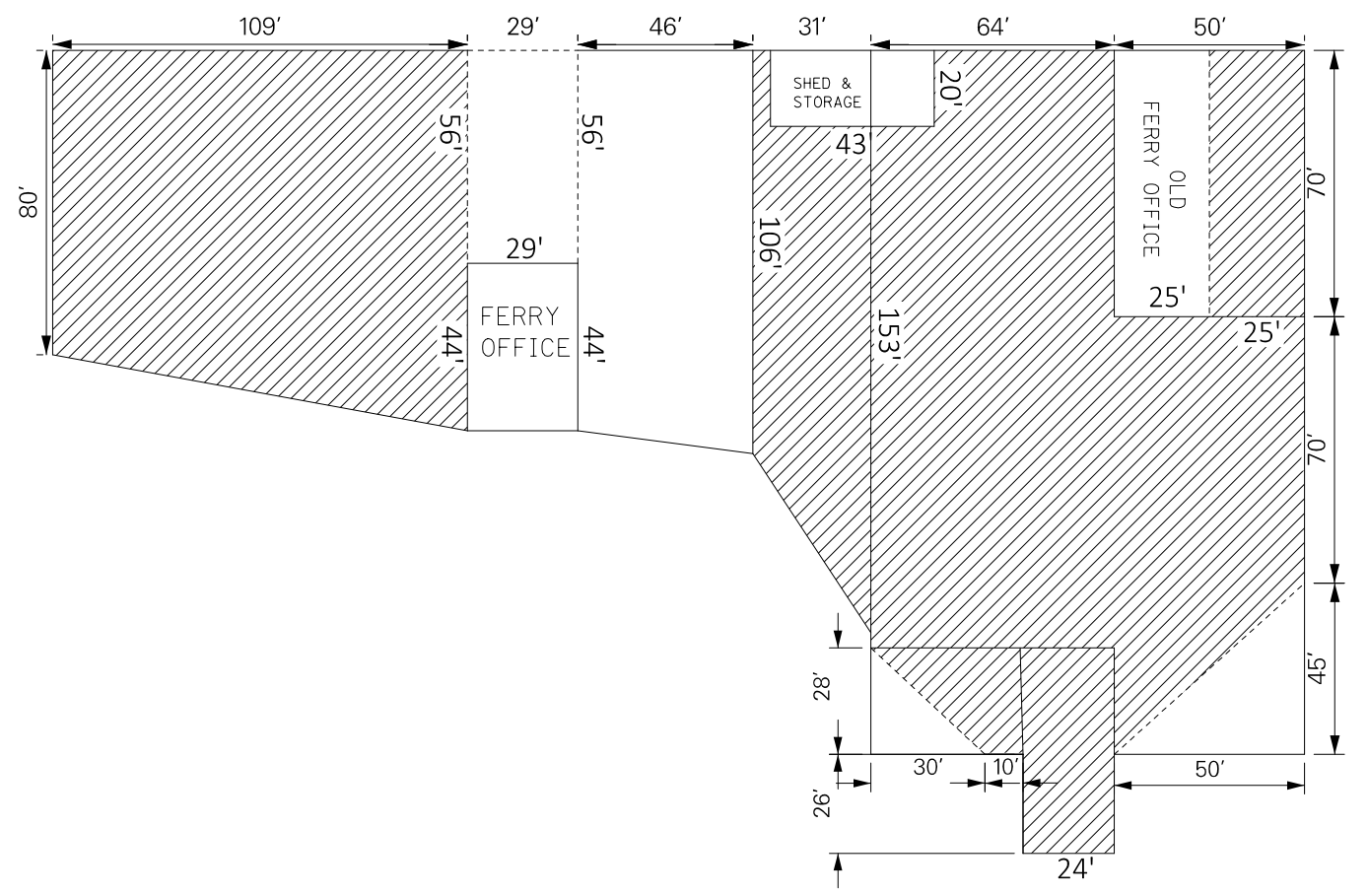
F.A. RTE.	SECTION	COUNTY	TOTAL SHEETS	SHEET NO.
•	DIST8 RESURFACING 2017-1	VARIOUS	9	4
			CONTRACT NO. 76J72	
ILLINOIS				



KAMPSVILLE FERRY  
 39°17'59.63"N  
 90°36'33.47"W



LOCATION MAP



LOCATION 2  
 KAMPSVILLE FERRY  
 PLAN DETAIL  
 NOT TO SCALE

AREA = 4475 SQ YDS  
 BITUMINOUS MATERIALS (PRIME COAT) = 7T  
 BITUMINOUS MATERIALS (COVER & SEAL COAT) = 13T  
 COVER COAT AGGREGATE = 44.75T  
 SEAL COAT AGGREGATE = 44.75T

A2 BITUMINOUS SURFACE TREATMENT

\* VARIOUS

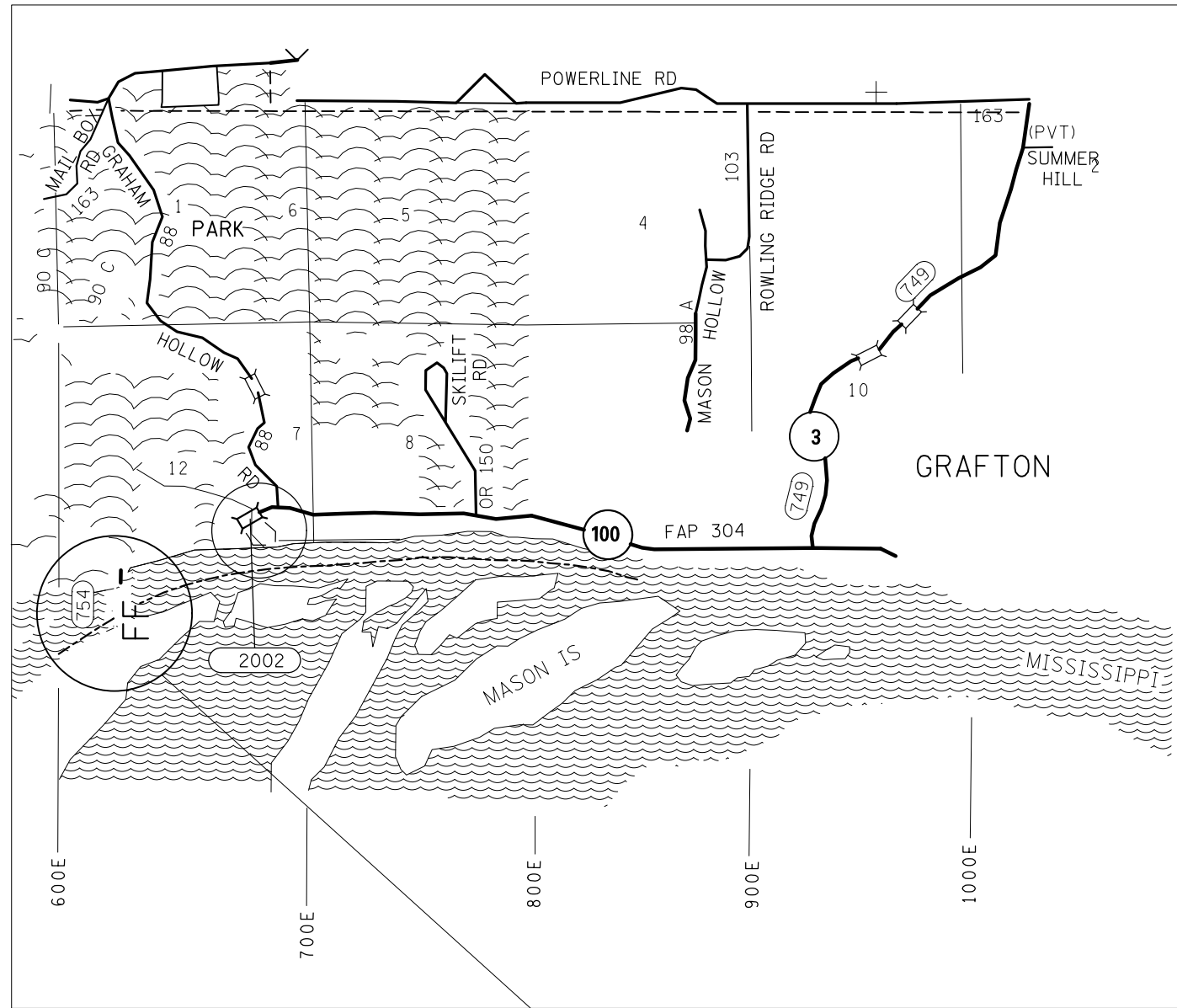
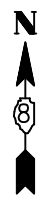
FILE NAME =	USER NAME = LeemonVE	DESIGNED -	REVISED -
pw\l\084EBIDINTEG.illinois.gov\PIDOT\Documents\DOT Offices\District 8\Projects\D876J72-sht-cover		DRAWN -	REVISED -
Default	PLOT SCALE = 100.0000' / in.	CHECKED -	REVISED -
	PLOT DATE = 12/14/2016	DATE -	REVISED -

STATE OF ILLINOIS  
 DEPARTMENT OF TRANSPORTATION

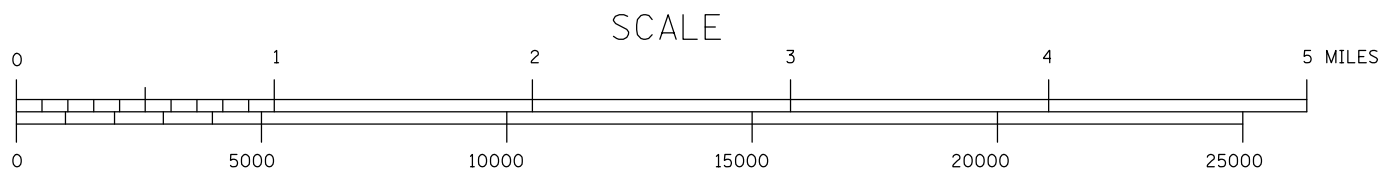
LOCATION #2  
 KAMPSVILLE FERRY PARKING LOT DETAIL

SCALE:	SHEET	OF	SHEETS	STA.	TO	STA.
--------	-------	----	--------	------	----	------

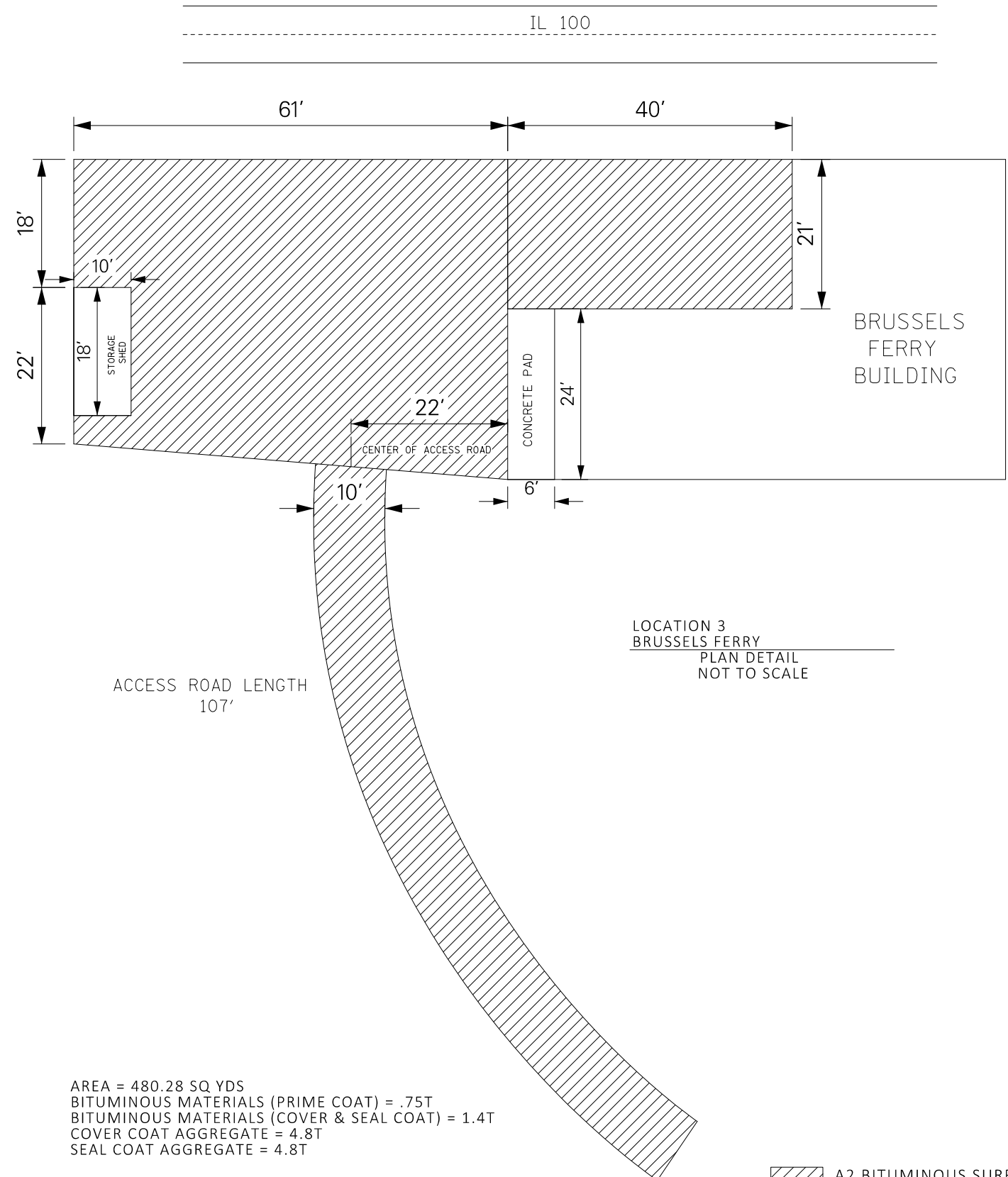
F.A. RTE.	SECTION	COUNTY	TOTAL SHEETS	SHEET NO.
*	DIST8 RESURFACING 2017-1	VARIOUS	9	5
			CONTRACT NO. 76J72	
ILLINOIS				



BRUSSELS FERRY  
38°58'04.27"N  
90°29'44.41"W



LOCATION MAP



LOCATION 3  
BRUSSELS FERRY  
PLAN DETAIL  
NOT TO SCALE

AREA = 480.28 SQ YDS  
BITUMINOUS MATERIALS (PRIME COAT) = .75T  
BITUMINOUS MATERIALS (COVER & SEAL COAT) = 1.4T  
COVER COAT AGGREGATE = 4.8T  
SEAL COAT AGGREGATE = 4.8T

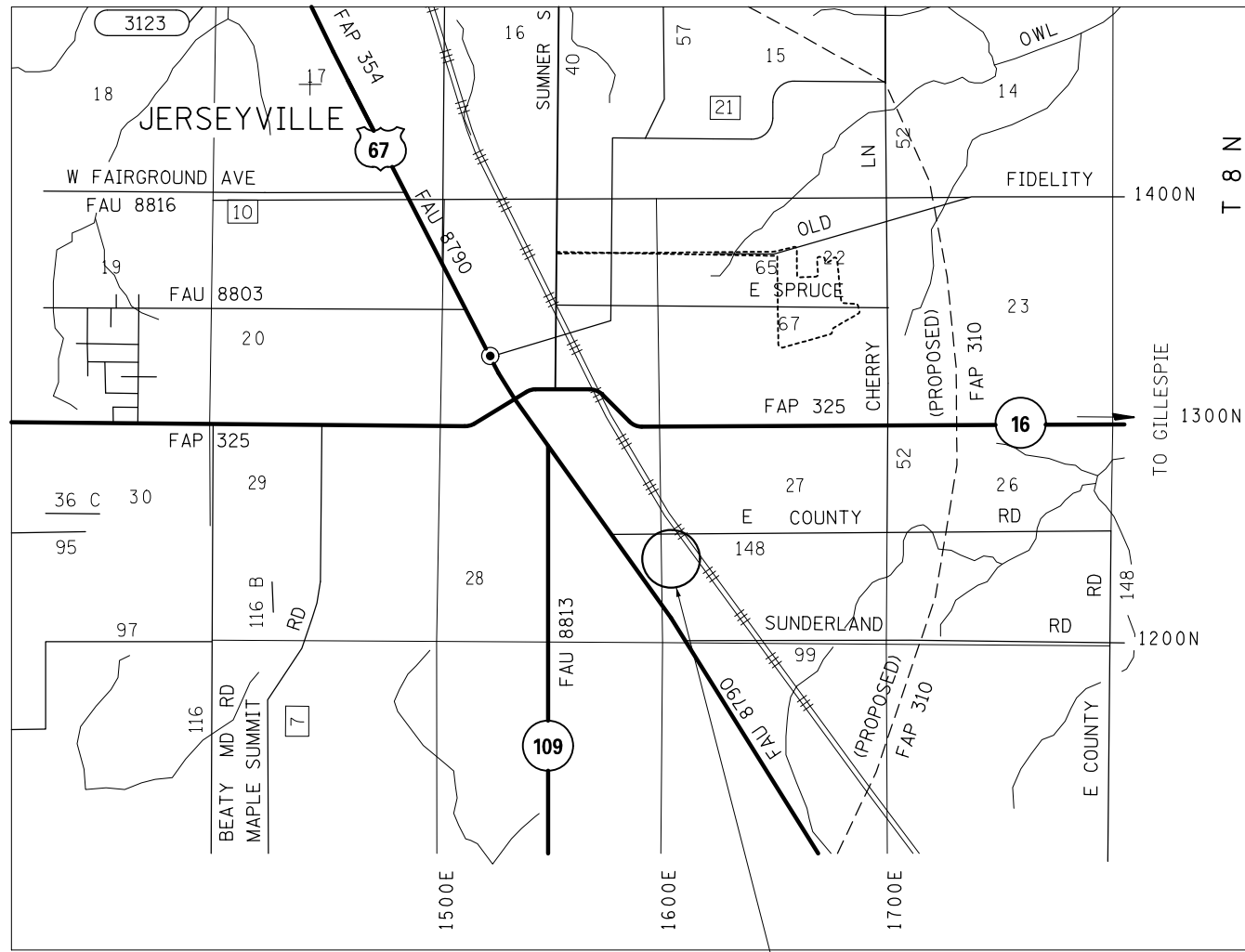
A2 BITUMINOUS SURFACE TREATMENT  
\* VARIOUS

FILE NAME =	USER NAME = LeemonVE	DESIGNED -	REVISED -
pw:\IL\084EBIDINTEG\illinois.gov\PIWIDOT\Documents\IDOT Offices\District 8\Projects\0875-DRAWING\DATA\EA\Sheets\D876J72-sht-cover.dwg		CHECKED -	REVISED -
Default	PLOT DATE = 12/14/2016	DATE -	REVISED -

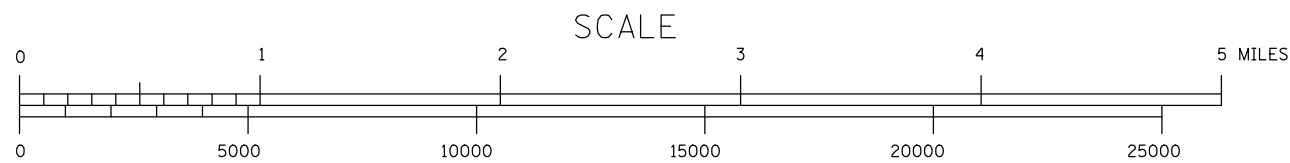
STATE OF ILLINOIS  
DEPARTMENT OF TRANSPORTATION

LOCATION #3			
BRUSSELS FERRY PARKING LOT DETAIL			
SCALE:	SHEET	OF SHEETS	STA. TO STA.

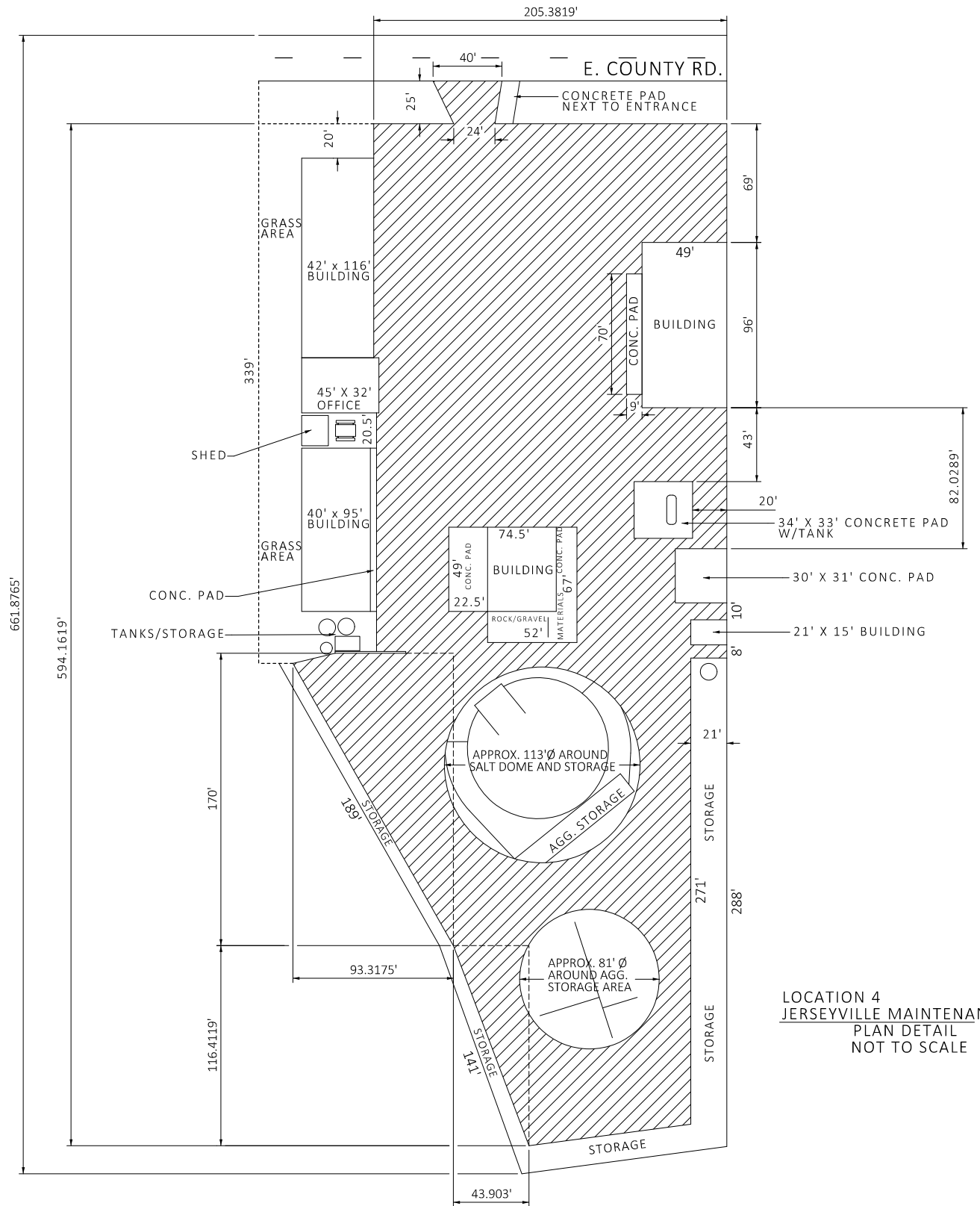
F.A. RTE.	SECTION	COUNTY	TOTAL SHEETS	SHEET NO.
• DIST 8 RESURFACING 2017-1	VARIOUS	VARIOUS	9	6
			CONTRACT NO. 76J72	
ILLINOIS				



JERSEYVILLE MAINTENANCE YARD  
 39°06'30.30"N  
 90°18'56.54"W



LOCATION MAP



AREA = 9089 SQ. YDS  
 BITUMINOUS MATERIALS (PRIME COAT) = 14.2T  
 BITUMINOUS MATERIALS (COVER & SEAL COAT) = 26.5T  
 COVER COAT AGGREGATE = 90.9T  
 SEAL COAT AGGREGATE = 90.9T

LOCATION #4  
 JERSEYVILLE MAINTENANCE YARD  
 PLAN DETAIL  
 NOT TO SCALE

A2 BITUMINOUS SURFACE TREATMENT

\* VARIOUS

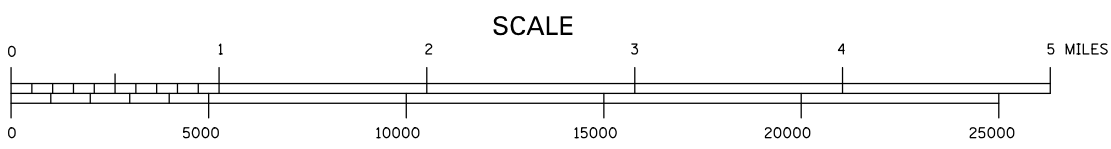
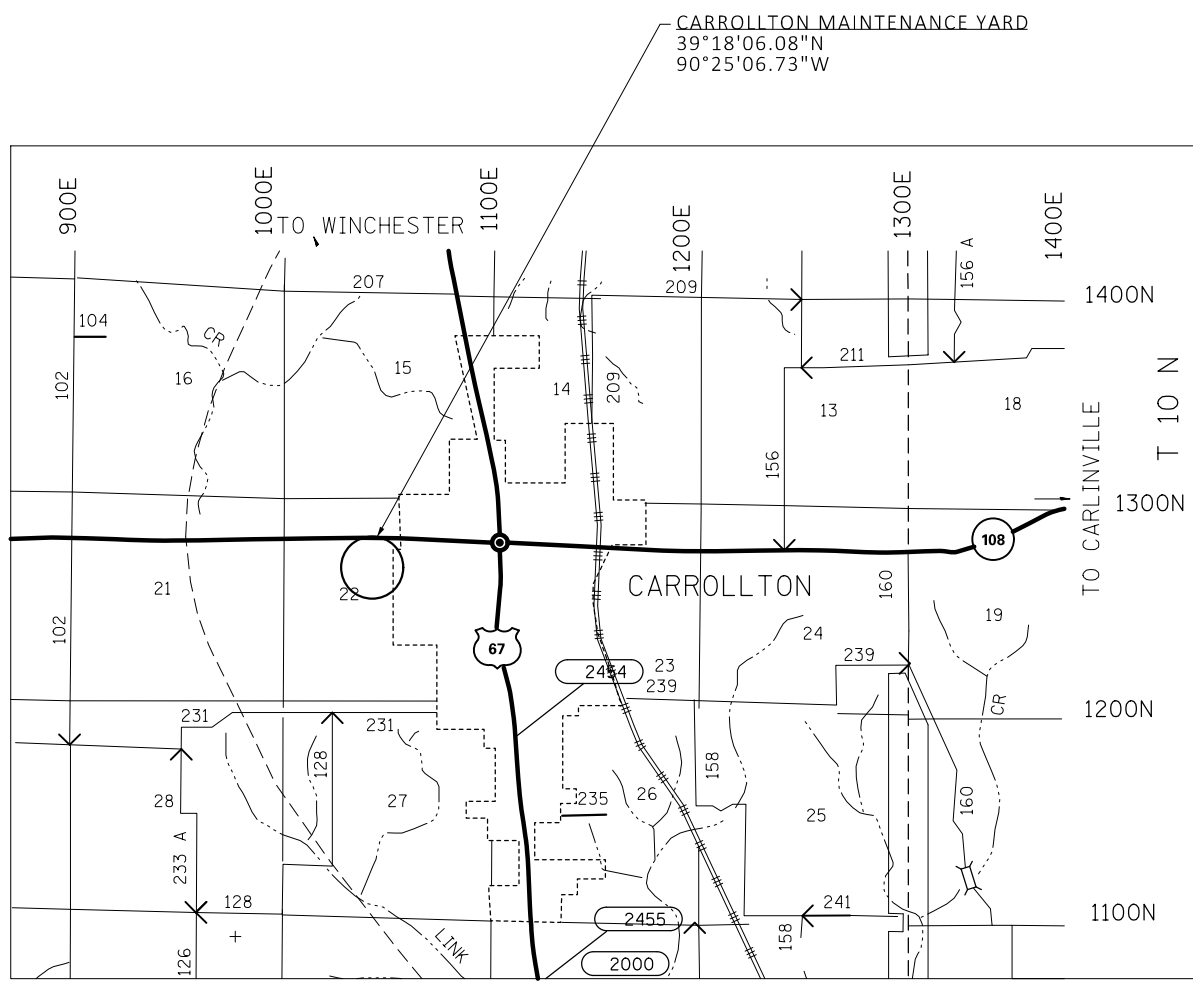
FILE NAME =	USER NAME = LeemonVE	DESIGNED -	REVISED -
pw:\IL\084EBIDINTEG.illinois.gov\PIDOT\Documents\IDOT Offices\District 8\Projects\D876J72-sht-cover		DRAWN -	REVISED -
Default	PLOT SCALE = 100.0000' / 1in.	CHECKED -	REVISED -
	PLOT DATE = 12/14/2016	DATE -	REVISED -

STATE OF ILLINOIS  
 DEPARTMENT OF TRANSPORTATION

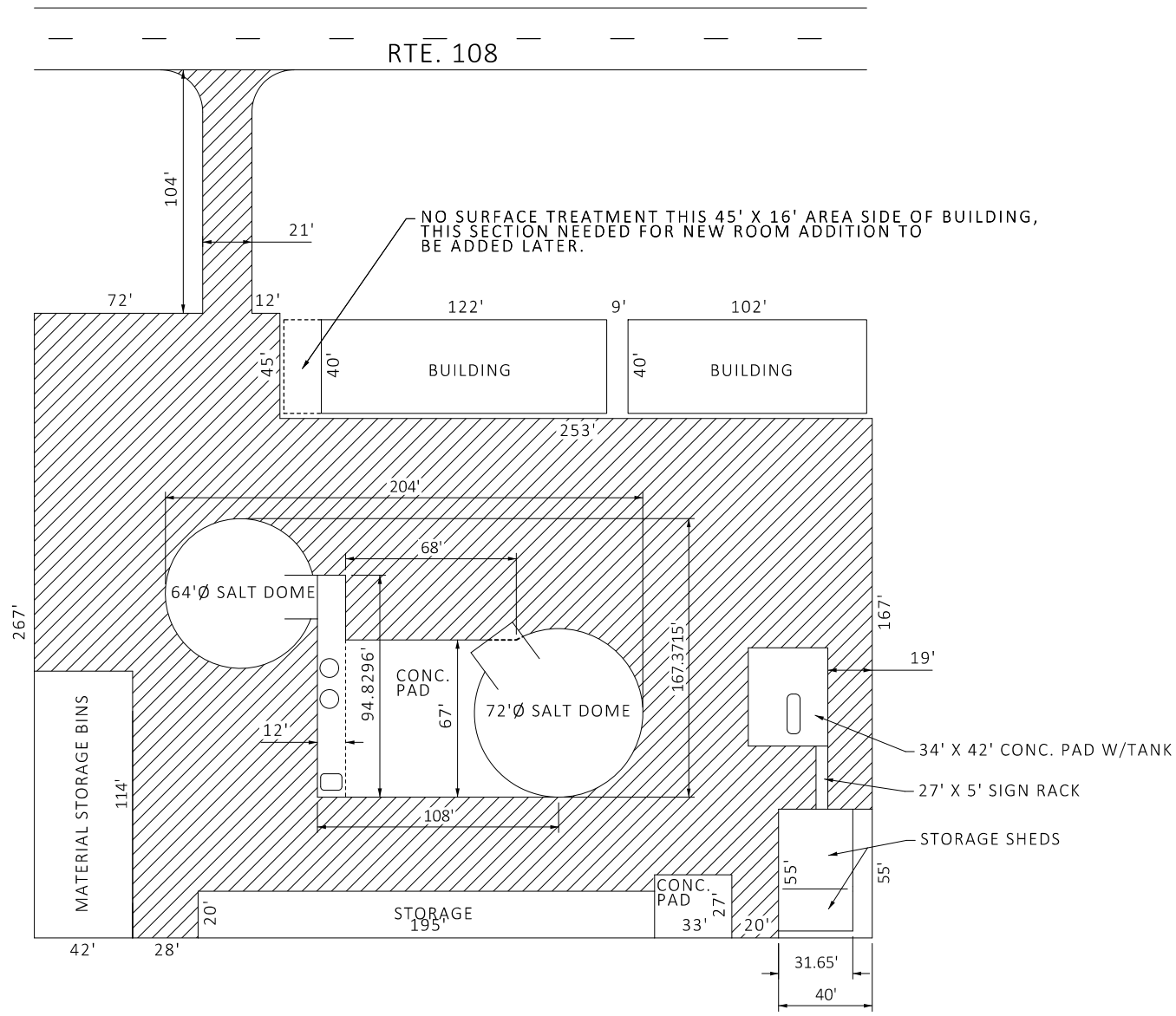
LOCATION #4  
 JERSEYVILLE MAINTENANCE YARD

SCALE: SHEET OF SHEETS STA. TO STA.

F.A. RTE.	SECTION	COUNTY	TOTAL SHEETS	SHEET NO.
•	D8 RESURFACING 2017-1	VARIOUS	9	7
			CONTRACT NO. 76J72	
ILLINOIS				



LOCATION MAP



LOCATION 5  
CARROLLTON MAINTENANCE YARD  
PLAN DETAIL  
NOT TO SCALE

AREA = 6715 SQ YDS  
 BITUMINOUS MATERIALS (PRIME COAT) = 10.5T  
 BITUMINOUS MATERIALS (COVER & SEAL COAT) = 19.6T  
 COVER COAT AGGREGATE = 67.2T  
 SEAL COAT AGGREGATE = 67.2T

A2 BITUMINOUS SURFACE TREATMENT  
 \* VARIOUS

FILE NAME =	USER NAME = LemonVE	DESIGNED -	REVISED -
pw\11084EBIDINTEG\Illinois.gov\PWIDOT\Documents\IDOT Offices\District 8\Projects\0876\DRAWING\DATA\CADsheets\0876J72-sht-cover.dwg		DRAWN BY -	REVISED -
Default	PLOT SCALE = 100.0000' / 1in.	CHECKED -	REVISED -
	PLOT DATE = 12/14/2016	DATE -	REVISED -

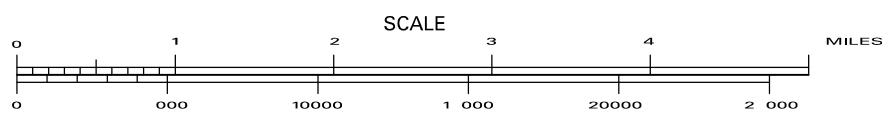
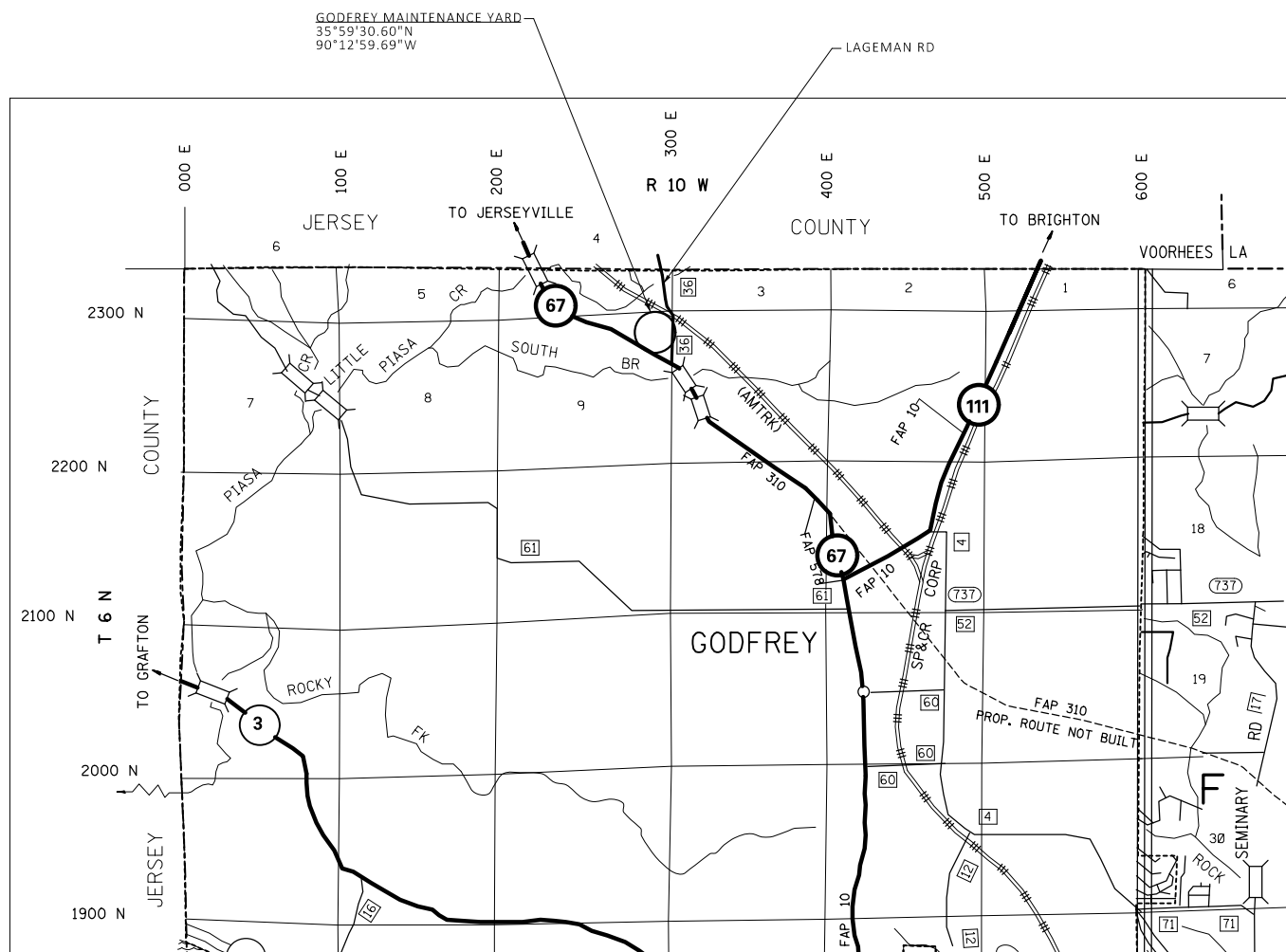
STATE OF ILLINOIS  
DEPARTMENT OF TRANSPORTATION

LOCATION #5  
CARROLLTON MAINTENANCE YARD

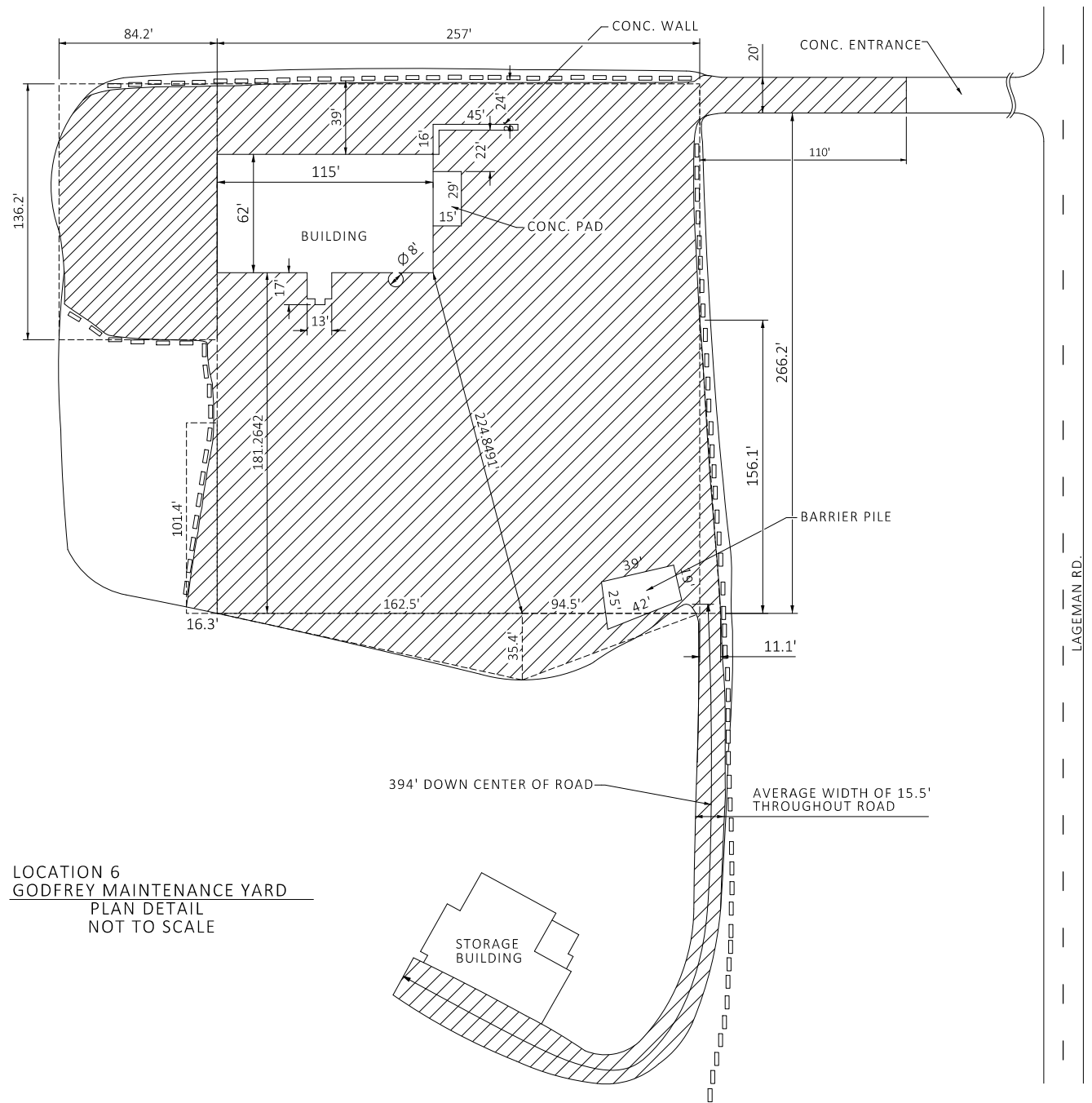
SCALE: SHEET OF SHEETS STA. TO STA.

F.A. RTE.	SECTION	COUNTY	TOTAL SHEETS	SHEET NO.
8	D8 RESURFACING 2017-1	VARIOUS	9	8
ILLINOIS			CONTRACT NO. 76J72	





LOCATION MAP



LOCATION 6  
GODFREY MAINTENANCE YARD  
PLAN DETAIL  
NOT TO SCALE

AREA = 10075 SQ YDS  
 BITUMINOUS MATERIALS (PRIME COAT) = 15.8T  
 BITUMINOUS MATERIALS (COVER & SEAL COAT) = 29.4T  
 COVER COAT AGGREGATE = 100.8T  
 SEAL COAT AGGREGATE = 100.8T

A2 BITUMINOUS SURFACE TREATMENT  
 \* VARIOUS

FILE NAME =	USER NAME = LeemonVE	DESIGNED -	REVISED -
pw:\IL\084EBIDINTEG\illinois.gov\PI\DOT\Documents\IDOT Offices\District 8\Projects\D876\DRAWING\DATA\CADsheets\D876J72-sht-cover.dwg		DRAWN -	REVISED -
Default	PLOT SCALE = 100.0000' / 1in.	CHECKED -	REVISED -
	PLOT DATE = 12/14/2016	DATE -	REVISED -

STATE OF ILLINOIS  
DEPARTMENT OF TRANSPORTATION

LOCATION #6  
GODFREY MAINTENANCE YARD

SCALE: SHEET OF SHEETS STA. TO STA.

F.A. RTE.	SECTION	COUNTY	TOTAL SHEETS	SHEET NO.
•	D8 RESURFACING 2017-1	VARIOUS	9	9
			CONTRACT NO. 76J72	
ILLINOIS				